



FP Turbo Series 2016-1 Trust as at 28 February 2019

Portfolio Summary	
Portfolio size	\$ 109,126,192.34
Number of contracts	4,517
Number of obligors	648
Weighted average yield (p.a.)	11.06%
Average contract balance (current)	\$ 24,159.00
Maximum contract balance (current)	\$ 199,821.72
Average contract balance (original)	\$ 47,921.01
Maximum contract balance (original)	\$ 487,571.03
Weighted average total contract term (months)	53.78
Weighted average seasoning (months)	41.39
Weighted average remaining term (months)	12.39
Maximum remaining term (months)	56.09
Weighted average residual (current)	65.18%
Weighted average residual (original)	33.37%
Weighted average balloon percentage	74.56%
Balloon payments contract balance	\$ 107,336,850.19
Balloon payments contract count	4,488
Balloon payments value	\$ 81,369,298.70
Maximum balloon payment	\$ 189,486.36
Maximum contract balance	\$ 199,821.72

Top 10 Obligor

Customer Code	Number of Contracts	(%) Number of Contracts	Receivables Outstanding	(%) Receivables Outstanding
AAN0481	311	6.89%	\$ 6,902,498	6.33%
ARO0130	81	1.79%	\$ 5,825,826	5.34%
ARI0248	319	7.06%	\$ 5,255,647	4.82%
AMU0167	116	2.57%	\$ 5,038,456	4.62%
AAG0025	157	3.48%	\$ 4,169,393	3.82%
ATE0041	197	4.36%	\$ 3,757,994	3.44%
ATS0013	148	3.28%	\$ 2,932,701	2.69%
ASP0122	28	0.62%	\$ 2,895,901	2.65%
AGI0035	74	1.64%	\$ 1,871,331	1.71%
ARA0071	29	0.64%	\$ 1,500,619	1.38%
Total	1,460	32.32%	\$ 40,150,367	36.79%

Top 10 Contract Balance

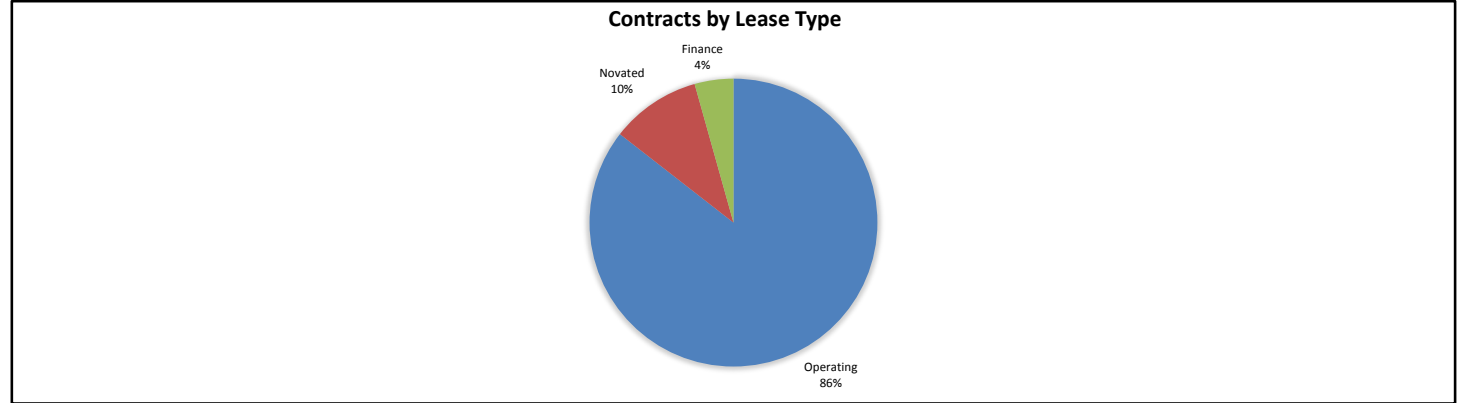
	Receivables Outstanding
1st Decile Upper Limit	\$ 199,822
2nd Decile Upper Limit	\$ 199,666
3rd Decile Upper Limit	\$ 186,125
4th Decile Upper Limit	\$ 185,779
5th Decile Upper Limit	\$ 184,135
6th Decile Upper Limit	\$ 180,985
7th Decile Upper Limit	\$ 177,869
8th Decile Upper Limit	\$ 176,934
9th Decile Upper Limit	\$ 175,085
10th Decile Upper Limit	\$ 174,511

Top 10 Contract Aggregate Balance

	Receivables Outstanding
Aggregate Balance- 1st Decile	\$ 199,822
Aggregate Balance- 2nd Decile	\$ 199,666
Aggregate Balance- 3rd Decile	\$ 186,125
Aggregate Balance- 4th Decile	\$ 185,779
Aggregate Balance- 5th Decile	\$ 184,135
Aggregate Balance- 6th Decile	\$ 180,985
Aggregate Balance- 7th Decile	\$ 177,869
Aggregate Balance- 8th Decile	\$ 176,934
Aggregate Balance- 9th Decile	\$ 175,085
Aggregate Balance- 10th Decile	\$ 174,511
Total	\$ 1,840,909

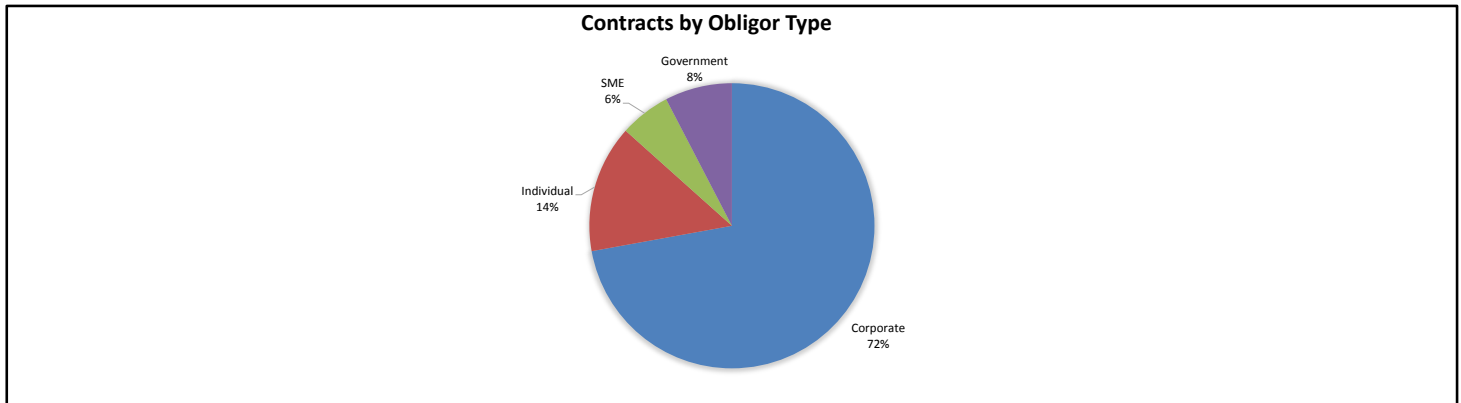
Contracts by Lease Type

Lease Type	Number of Contracts	(%) Number of Contracts	Receivables Outstanding	(%) Receivables Outstanding
Operating	3,848	85.19%	\$ 93,338,522	85.53%
Novated	450	9.96%	\$ 11,036,527	10.11%
Finance	219	4.85%	\$ 4,751,143	4.35%
Total	4,517	100.00%	\$ 109,126,192	100.00%



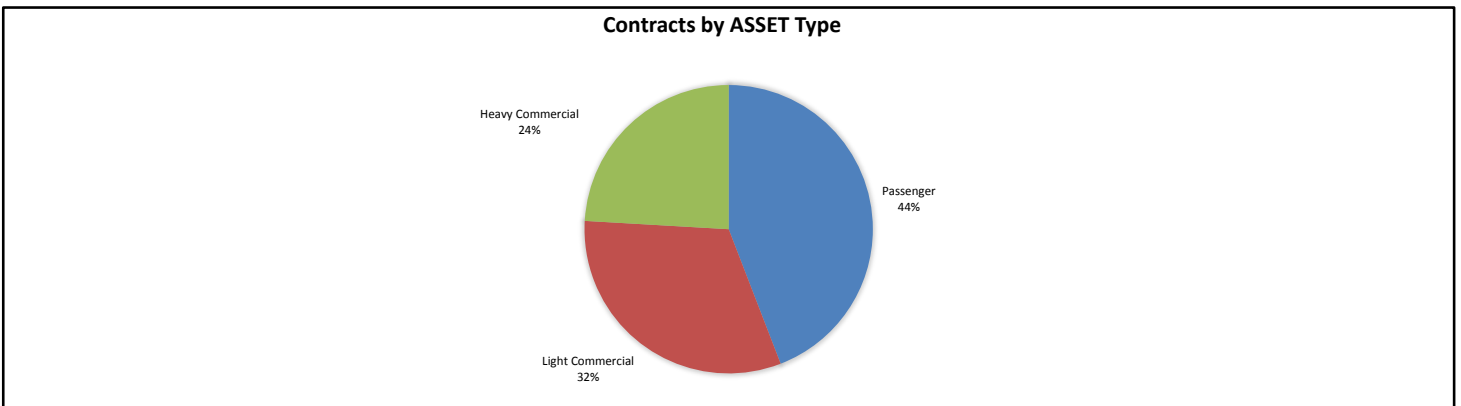
Contracts by Obligor Type

Obligor Type	Number of Contracts	(%) Number of Contracts	Receivables Outstanding	(%) Receivables Outstanding
Corporate	3,337	73.88%	\$ 78,731,761	72.15%
Individual	669	14.81%	\$ 15,787,670	14.47%
SME	349	7.73%	\$ 6,286,209	5.76%
Government	162	3.59%	\$ 8,320,552	7.62%
Total	4,517	100.00%	\$ 109,126,192	100.00%



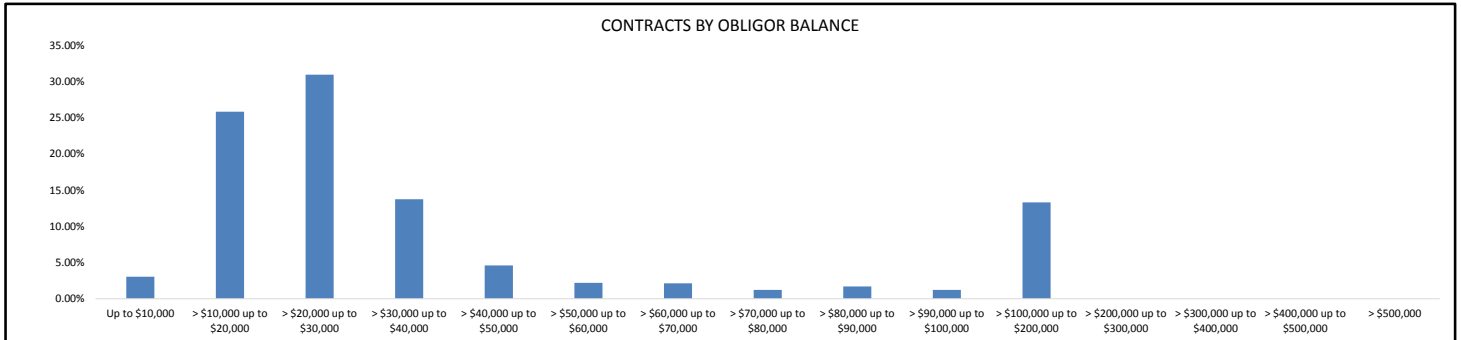
Contracts by Asset Type

Asset Type	Number of Contracts	(%) Number of Contracts	Receivables Outstanding	(%) Receivables Outstanding
Passenger	2,611	57.80%	\$ 48,159,645	44.13%
Light Commercial	1,510	33.43%	\$ 34,689,797	31.79%
Heavy Commercial	396	8.77%	\$ 26,276,750	24.08%
Total	4,517	100.00%	\$ 109,126,192	100.00%



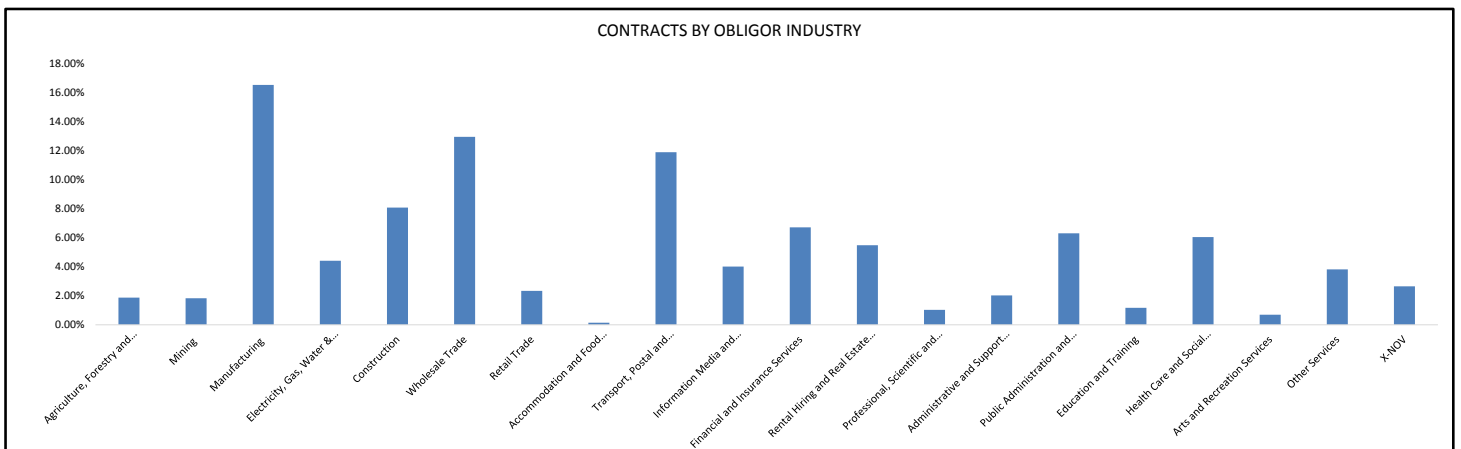
Contracts by Obligor Balance

Obligor Balance	Number of Contracts	(%) Number of Contracts	Receivables Outstanding	(%) Receivables Outstanding
Up to \$10,000	452	10.01%	\$ 3,331,694	3.05%
> \$10,000 up to \$20,000	1,872	41.44%	\$ 28,203,664	25.84%
> \$20,000 up to \$30,000	1,398	30.95%	\$ 33,780,937	30.96%
> \$30,000 up to \$40,000	440	9.74%	\$ 14,997,134	13.74%
> \$40,000 up to \$50,000	114	2.52%	\$ 5,025,797	4.61%
> \$50,000 up to \$60,000	44	0.97%	\$ 2,396,593	2.20%
> \$60,000 up to \$70,000	36	0.80%	\$ 2,330,364	2.14%
> \$70,000 up to \$80,000	18	0.40%	\$ 1,335,468	1.22%
> \$80,000 up to \$90,000	22	0.49%	\$ 1,845,601	1.69%
> \$90,000 up to \$100,000	14	0.31%	\$ 1,340,602	1.23%
> \$100,000 up to \$200,000	107	2.37%	\$ 14,538,339	13.32%
> \$200,000 up to \$300,000	0	0.00%	\$ -	0.00%
> \$300,000 up to \$400,000	0	0.00%	\$ -	0.00%
> \$400,000 up to \$500,000	0	0.00%	\$ -	0.00%
> \$500,000	0	0.00%	\$ -	0.00%
Total	4,517	100.00%	\$ 109,126,192	100.00%



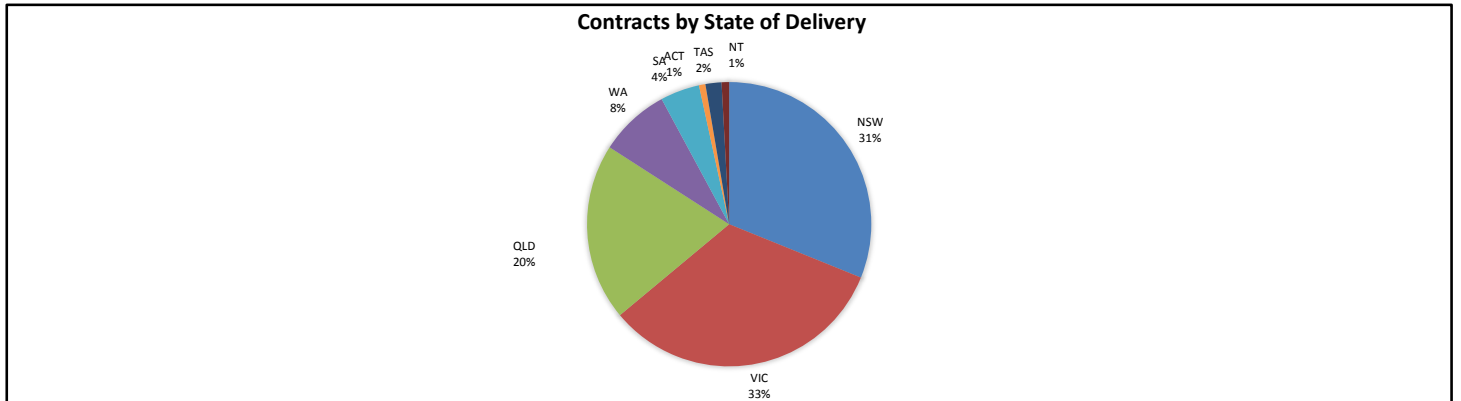
Contracts by Obligor Industry

Obligor Industry	Number of Contracts	(%) Number of Contracts	Receivables Outstanding	(%) Receivables Outstanding
ANZSIC Industry Division: Agriculture, Forestry and Fishing	87	1.93%	\$ 2,042,257	1.87%
ANZSIC Industry Division: Mining	74	1.64%	\$ 2,000,325	1.83%
ANZSIC Industry Division: Manufacturing	687	15.21%	\$ 18,038,383	16.53%
ANZSIC Industry Division: Electricity, Gas, Water and Waste Services	242	5.36%	\$ 4,809,570	4.41%
ANZSIC Industry Division: Construction	394	8.72%	\$ 8,815,117	8.08%
ANZSIC Industry Division: Wholesale Trade	614	13.59%	\$ 14,136,944	12.95%
ANZSIC Industry Division: Retail Trade	130	2.88%	\$ 2,548,854	2.34%
ANZSIC Industry Division: Accommodation and Food Services	8	0.18%	\$ 160,980	0.15%
ANZSIC Industry Division: Transport, Postal and Warehousing	252	5.58%	\$ 12,978,220	11.89%
ANZSIC Industry Division: Information Media and Telecommunications	219	4.85%	\$ 4,374,956	4.01%
ANZSIC Industry Division: Financial and Insurance Services	333	7.37%	\$ 7,322,012	6.71%
ANZSIC Industry Division: Rental, Hiring and Real Estate Services	354	7.84%	\$ 5,987,591	5.49%
ANZSIC Industry Division: Professional, Scientific and Technical Services	52	1.15%	\$ 1,123,391	1.03%
ANZSIC Industry Division: Administrative and Support Services	111	2.46%	\$ 2,207,641	2.02%
ANZSIC Industry Division: Public Administration and Safety	137	3.03%	\$ 6,878,020	6.30%
ANZSIC Industry Division: Education and Training	56	1.24%	\$ 1,273,442	1.17%
ANZSIC Industry Division: Health Care and Social Assistance	399	8.83%	\$ 6,600,601	6.05%
ANZSIC Industry Division: Arts and Recreational Services	51	1.13%	\$ 763,210	0.70%
Other Services	189	4.18%	\$ 4,167,408	3.82%
X-NOV	128	2.83%	\$ 2,897,271	2.65%
Total	4,517	100.00%	\$ 109,126,192	100.00%



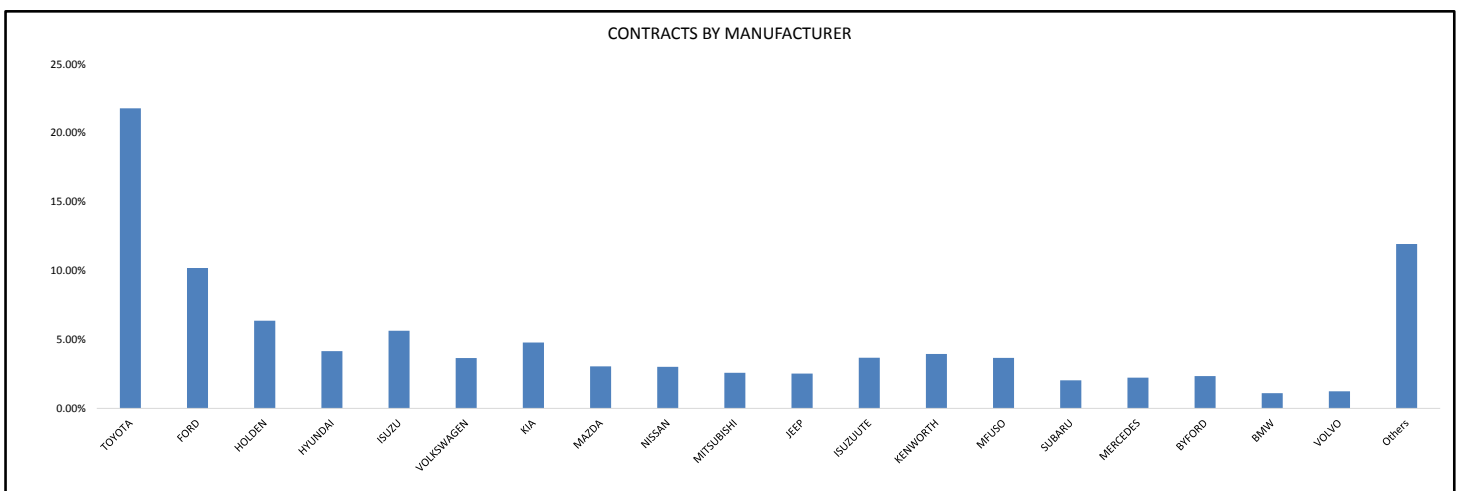
Contracts by State of Delivery

State of Delivery	Number of Contracts	(%) Number of Contracts	Receivables Outstanding	(%) Receivables Outstanding
NSW	1,293	28.63%	\$ 33,968,535	31.13%
VIC	1,471	32.57%	\$ 35,815,545	32.82%
QLD	945	20.92%	\$ 21,988,559	20.15%
WA	422	9.34%	\$ 8,758,081	8.03%
SA	217	4.80%	\$ 4,869,813	4.46%
ACT	35	0.77%	\$ 802,559	0.74%
TAS	94	2.08%	\$ 1,989,033	1.82%
NT	40	0.89%	\$ 934,067	0.86%
Total	4,517	100.00%	\$ 109,126,192	100.00%



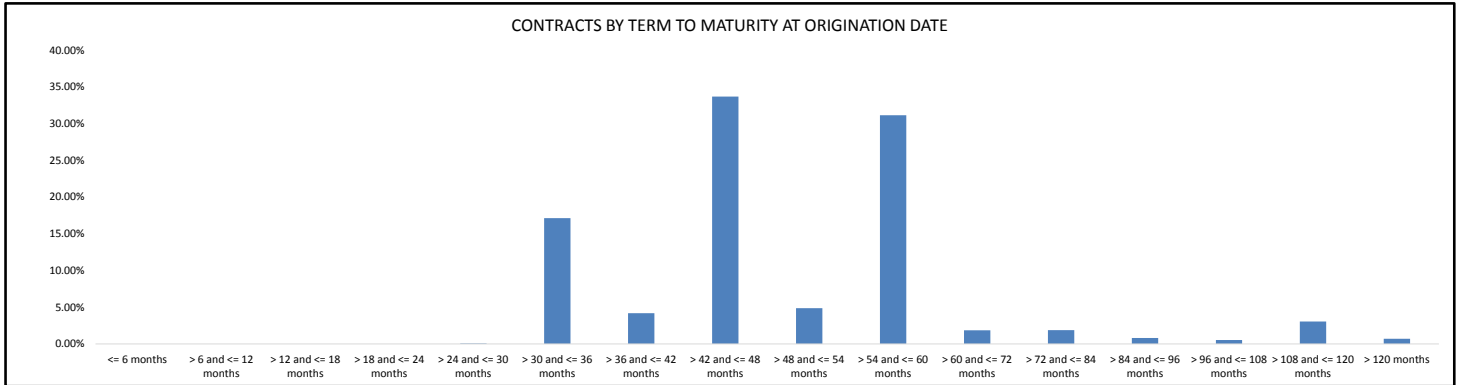
Contracts by Manufacturer

Manufacturer	Number of Contracts	(%) Number of Contracts	Receivables Outstanding	(%) Receivables Outstanding
TOYOTA	1,083	23.98%	\$ 23,786,638	21.80%
FORD	543	12.02%	\$ 11,133,807	10.20%
HOLDEN	406	8.99%	\$ 6,955,655	6.37%
HYUNDAI	306	6.77%	\$ 4,543,712	4.16%
ISUZU	114	2.52%	\$ 6,150,876	5.64%
VOLKSWAGEN	209	4.63%	\$ 3,989,293	3.66%
KIA	321	7.11%	\$ 5,224,114	4.79%
MAZDA	181	4.01%	\$ 3,336,186	3.06%
NISSAN	200	4.43%	\$ 3,299,499	3.02%
MITSUBISHI	145	3.21%	\$ 2,819,916	2.58%
JEEP	122	2.70%	\$ 2,760,452	2.53%
ISUZUUTE	171	3.79%	\$ 4,012,743	3.68%
KENWORTH	29	0.64%	\$ 4,319,773	3.96%
MFUSO	85	1.88%	\$ 3,999,490	3.67%
SUBARU	113	2.50%	\$ 2,222,451	2.04%
MERCEDES	62	1.37%	\$ 2,431,697	2.23%
BYFORD	21	0.46%	\$ 2,558,916	2.34%
BMW	32	0.71%	\$ 1,199,608	1.10%
VOLVO	20	0.44%	\$ 1,349,446	1.24%
Others	354	7.84%	\$ 13,031,922	11.94%
Total	4,517	100.00%	\$ 109,126,192	100.00%



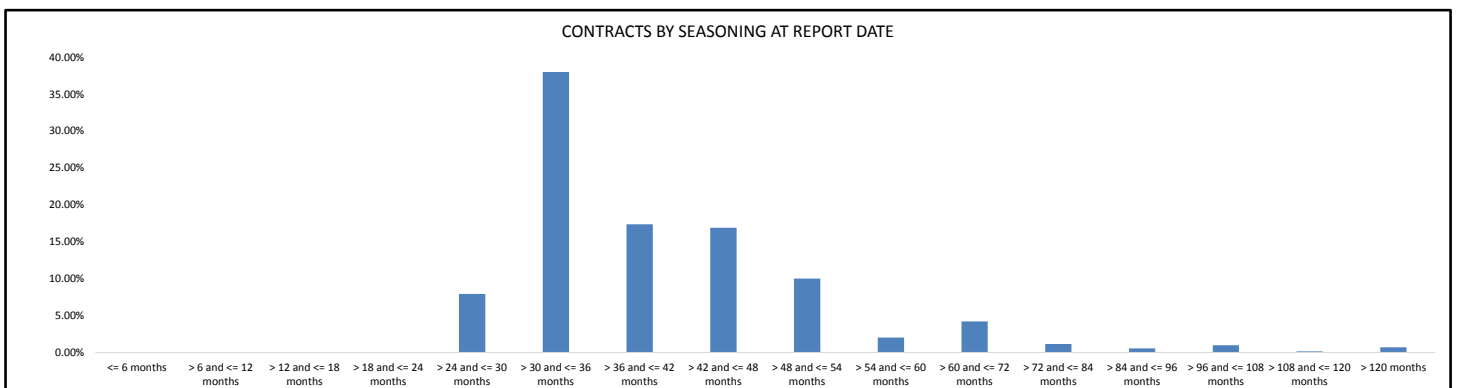
Contracts by Term to Maturity at Origination Date

Term to Maturity at Origination Date	Number of Contracts	(%) Number of Contracts	Receivables Outstanding	(%) Receivables Outstanding
<= 6 months	0	0.00%	\$ -	0.00%
> 6 and <= 12 months	0	0.00%	\$ -	0.00%
> 12 and <= 18 months	0	0.00%	\$ -	0.00%
> 18 and <= 24 months	0	0.00%	\$ -	0.00%
> 24 and <= 30 months	3	0.07%	\$ 76,821	0.07%
> 30 and <= 36 months	965	21.36%	\$ 18,714,958	17.15%
> 36 and <= 42 months	238	5.27%	\$ 4,575,767	4.19%
> 42 and <= 48 months	1,690	37.41%	\$ 36,779,124	33.70%
> 48 and <= 54 months	354	7.84%	\$ 5,324,360	4.88%
> 54 and <= 60 months	1,053	23.31%	\$ 34,008,200	31.16%
> 60 and <= 72 months	75	1.66%	\$ 2,038,974	1.87%
> 72 and <= 84 months	44	0.97%	\$ 2,044,399	1.87%
> 84 and <= 96 months	19	0.42%	\$ 879,729	0.81%
> 96 and <= 108 months	15	0.33%	\$ 593,848	0.54%
> 108 and <= 120 months	36	0.80%	\$ 3,324,246	3.05%
> 120 months	25	0.55%	\$ 765,764	0.70%
Total	4,517	100.00%	\$ 109,126,192	100.00%



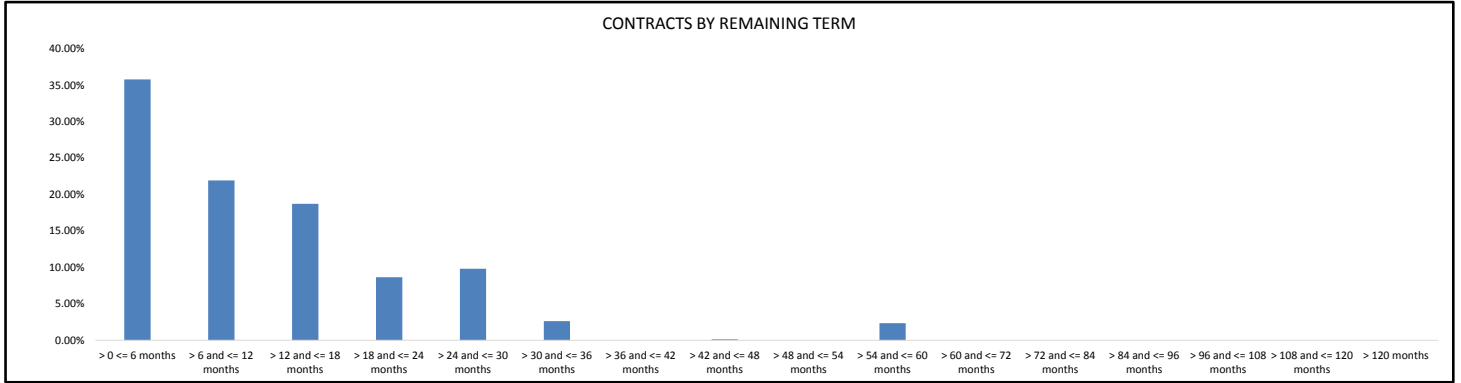
Contracts by Seasoning at Report Date

Seasoning at Report Date	Number of Contracts	(%) Number of Contracts	Receivables Outstanding	(%) Receivables Outstanding
<= 6 months	0	0.00%	\$ -	0.00%
> 6 and <= 12 months	0	0.00%	\$ -	0.00%
> 12 and <= 18 months	0	0.00%	\$ -	0.00%
> 18 and <= 24 months	0	0.00%	\$ -	0.00%
> 24 and <= 30 months	301	6.66%	\$ 8,654,121	7.93%
> 30 and <= 36 months	1,695	37.52%	\$ 41,489,667	38.02%
> 36 and <= 42 months	846	18.73%	\$ 18,953,927	17.37%
> 42 and <= 48 months	887	19.64%	\$ 18,440,489	16.90%
> 48 and <= 54 months	466	10.32%	\$ 10,934,281	10.02%
> 54 and <= 60 months	131	2.90%	\$ 2,211,256	2.03%
> 60 and <= 72 months	90	1.99%	\$ 4,603,398	4.22%
> 72 and <= 84 months	34	0.75%	\$ 1,253,935	1.15%
> 84 and <= 96 months	15	0.33%	\$ 598,563	0.55%
> 96 and <= 108 months	22	0.49%	\$ 1,067,024	0.98%
> 108 and <= 120 months	5	0.11%	\$ 153,766	0.14%
> 120 months	25	0.55%	\$ 765,764	0.70%
Total	4,517	100.00%	\$ 109,126,192	100.00%



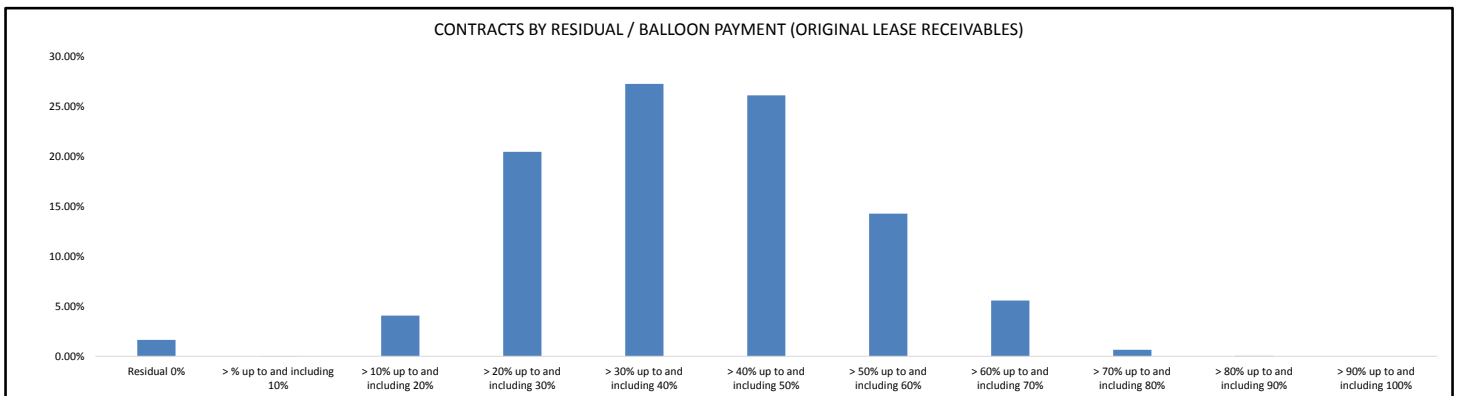
Contracts by Remaining Term

Remaining Term	Number of Contracts	(%) Number of Contracts	Receivables Outstanding	(%) Receivables Outstanding
> 0 <= 6 months	2,117	46.87%	\$ 39,053,248	35.79%
> 6 and <= 12 months	1,031	22.82%	\$ 23,923,678	21.92%
> 12 and <= 18 months	735	16.27%	\$ 20,442,930	18.73%
> 18 and <= 24 months	294	6.51%	\$ 9,433,909	8.64%
> 24 and <= 30 months	269	5.96%	\$ 10,705,610	9.81%
> 30 and <= 36 months	49	1.08%	\$ 2,868,020	2.63%
> 36 and <= 42 months	0	0.00%	\$ -	0.00%
> 42 and <= 48 months	1	0.02%	\$ 139,882	0.13%
> 48 and <= 54 months	0	0.00%	\$ -	0.00%
> 54 and <= 60 months	21	0.46%	\$ 2,558,916	2.34%
> 60 and <= 72 months	0	0.00%	\$ -	0.00%
> 72 and <= 84 months	0	0.00%	\$ -	0.00%
> 84 and <= 96 months	0	0.00%	\$ -	0.00%
> 96 and <= 108 months	0	0.00%	\$ -	0.00%
> 108 and <= 120 months	0	0.00%	\$ -	0.00%
> 120 months	0	0.00%	\$ -	0.00%
Total	4,517	100.00%	\$ 109,126,192	100.00%



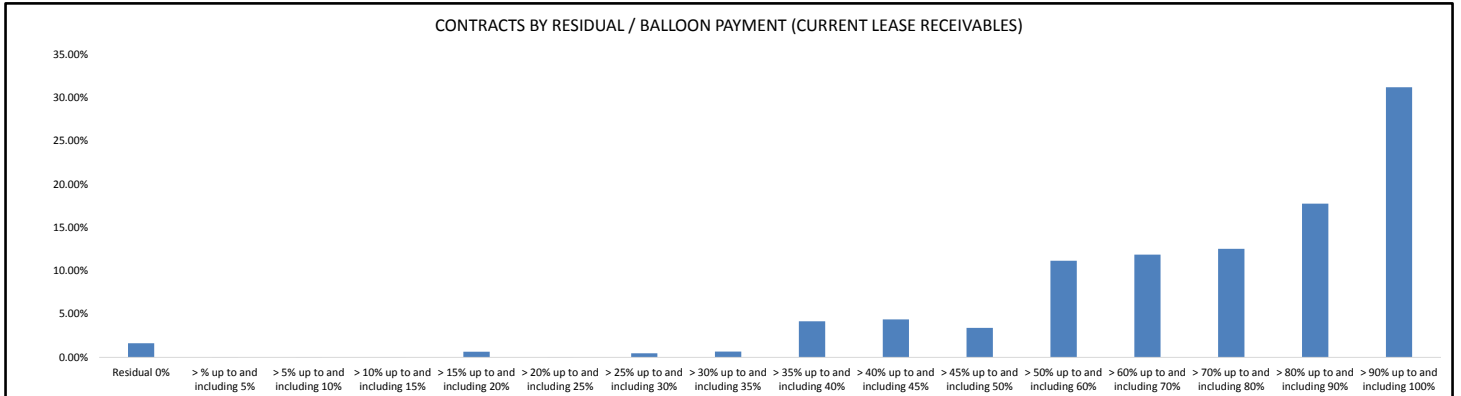
Contracts by Residual/Balloon Payment (Original Lease Receivables)

Residual/Balloon Payment (Original Lease Receivables)	Number of Contracts	(%) Number of Contracts	Receivables Outstanding	(%) Receivables Outstanding
Residual 0%	16	0.35%	\$ 1,786,413	1.64%
> % up to and including 10%	5	0.11%	\$ 26,680	0.02%
> 10% up to and including 20%	166	3.68%	\$ 4,444,377	4.07%
> 20% up to and including 30%	753	16.67%	\$ 22,303,960	20.44%
> 30% up to and including 40%	1,207	26.72%	\$ 29,715,424	27.23%
> 40% up to and including 50%	1,313	29.07%	\$ 28,455,709	26.08%
> 50% up to and including 60%	761	16.85%	\$ 15,554,494	14.25%
> 60% up to and including 70%	264	5.84%	\$ 6,083,672	5.57%
> 70% up to and including 80%	30	0.66%	\$ 708,659	0.65%
> 80% up to and including 90%	2	0.04%	\$ 46,804	0.04%
> 90% up to and including 100%	0	0.00%	\$ -	0.00%
Total	4,517	100.00%	\$ 109,126,192	100.00%



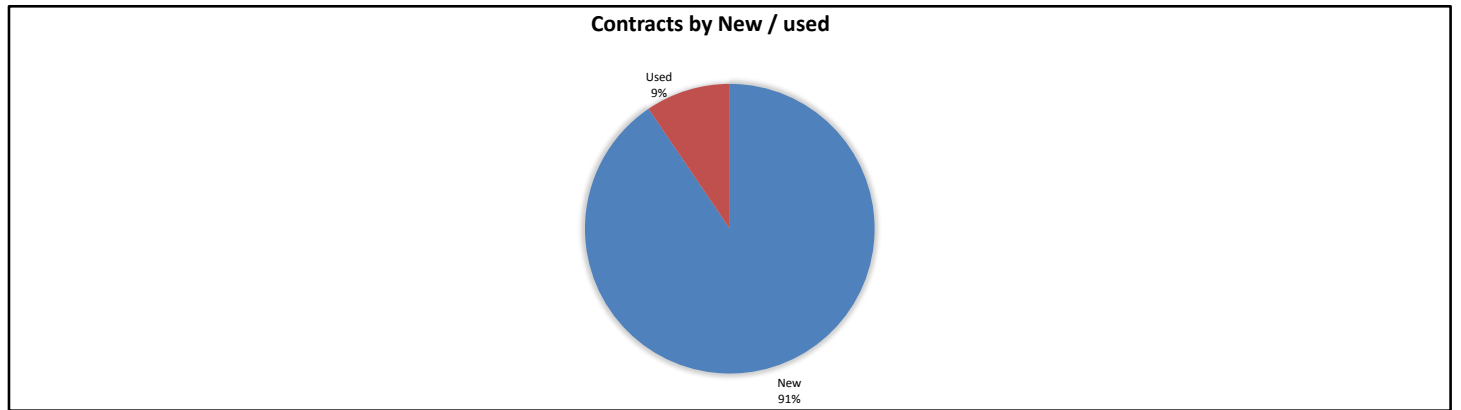
Contracts by Residual/Balloon Payment (Current Lease Receivables)

Residual/Balloon Payment (Current Lease Receivables)	Number of Contracts	(%) Number of Contracts	Receivables Outstanding	(%) Receivables Outstanding
Residual 0%	29	0.64%	\$ 1,789,342	1.64%
> % up to and including 5%	1	0.02%	\$ 5,111	0.00%
> 5% up to and including 10%	1	0.02%	\$ 1,932	0.00%
> 10% up to and including 15%	1	0.02%	\$ 3,048	0.00%
> 15% up to and including 20%	7	0.15%	\$ 720,953	0.66%
> 20% up to and including 25%	1	0.02%	\$ 3,709	0.00%
> 25% up to and including 30%	11	0.24%	\$ 508,531	0.47%
> 30% up to and including 35%	18	0.40%	\$ 738,042	0.68%
> 35% up to and including 40%	98	2.17%	\$ 4,543,765	4.16%
> 40% up to and including 45%	127	2.81%	\$ 4,799,716	4.40%
> 45% up to and including 50%	137	3.03%	\$ 3,717,233	3.41%
> 50% up to and including 60%	373	8.26%	\$ 12,185,435	11.17%
> 60% up to and including 70%	447	9.90%	\$ 12,967,383	11.88%
> 70% up to and including 80%	608	13.46%	\$ 13,698,880	12.55%
> 80% up to and including 90%	880	19.48%	\$ 19,380,329	17.76%
> 90% up to and including 100%	1,778	39.36%	\$ 34,062,784	31.21%
Total	4,517	100.00%	\$ 109,126,192	100.00%



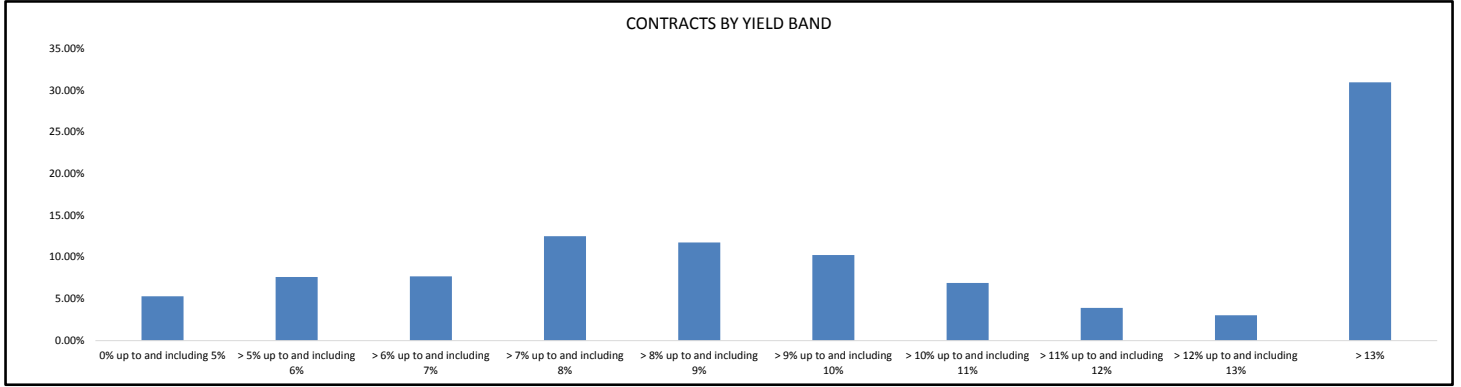
Contracts by New / Used

New / Used	Number of Contracts	(%) Number of Contracts	Receivables Outstanding	(%) Receivables Outstanding
New	4,219	93.40%	\$ 98,784,301	90.52%
Used	298	6.60%	\$ 10,341,891	9.48%
Total	4,517	100.00%	\$ 109,126,192	100.00%



Contracts by Yield Band

Yield Band	Number of Contracts	(%) Number of Contracts	Receivables Outstanding	(%) Receivables Outstanding
0% up to and including 5%	290	6.42%	\$ 5,803,402	5.32%
> 5% up to and including 6%	242	5.36%	\$ 8,318,938	7.62%
> 6% up to and including 7%	258	5.71%	\$ 8,397,673	7.70%
> 7% up to and including 8%	387	8.57%	\$ 13,661,877	12.52%
> 8% up to and including 9%	450	9.96%	\$ 12,837,533	11.76%
> 9% up to and including 10%	509	11.27%	\$ 11,200,171	10.26%
> 10% up to and including 11%	336	7.44%	\$ 7,541,419	6.91%
> 11% up to and including 12%	224	4.96%	\$ 4,287,059	3.93%
> 12% up to and including 13%	177	3.92%	\$ 3,314,053	3.04%
> 13%	1,644	36.40%	\$ 33,764,066	30.94%
Total	4,517	100.00%	\$ 109,126,192	100.00%



Contracts by Interest Rate

Interest Rate	Number of Contracts	(%) Number of Contracts	Receivables Outstanding	(%) Receivables Outstanding
0%	0	0.00%	\$ -	0.00%
> 0% up to and including 2%	0	0.00%	\$ -	0.00%
> 2% up to and including 4%	92	2.04%	\$ 1,854,160	1.70%
> 4% up to and including 6%	843	18.66%	\$ 23,484,601	21.52%
> 6% up to and including 8%	2,993	66.26%	\$ 69,554,750	63.74%
> 8% up to and including 10%	520	11.51%	\$ 11,890,722	10.90%
> 10% up to and including 12%	50	1.11%	\$ 1,339,952	1.23%
> 12% up to and including 14%	16	0.35%	\$ 916,203	0.84%
> 14% up to and including 16%	3	0.07%	\$ 85,805	0.08%
> 16% up to and including 18%	0	0.00%	\$ -	0.00%
> 18% up to and including 20%	0	0.00%	\$ -	0.00%
> 20%	0	0.00%	\$ -	0.00%
Total	4,517	100.00%	\$ 109,126,192	100.00%

