



FP Turbo Series 2016-1 Trust as at 30 June 2019

Portfolio Summary	
Portfolio size	\$ 85,937,073.49
Number of contracts	3,754
Number of obligors	584
Weighted average yield (p.a.)	11.02%
Average contract balance (current)	\$ 22,892.13
Maximum contract balance (current)	\$ 196,131.14
Average contract balance (original)	\$ 48,909.00
Maximum contract balance (original)	\$ 487,571.03
Weighted average total contract term (months)	55.52
Weighted average seasoning (months)	44.92
Weighted average remaining term (months)	10.60
Maximum remaining term (months)	52.08
Weighted average residual (current)	69.19%
Weighted average residual (original)	33.31%
Weighted average balloon percentage	78.09%
Balloon payments contract balance	\$ 84,268,131.66
Balloon payments contract count	3,721
Balloon payments value	\$ 67,112,248.10
Maximum balloon payment	\$ 189,486.36
Maximum contract balance	\$ 196,131.14

Top 10 Obligor

Customer Code	Number of Contracts	(%) Number of Contracts	Receivables Outstanding	(%) Receivables Outstanding
ARO0130	81	2.16%	\$ 5,451,556	6.34%
AAN0481	261	6.95%	\$ 5,350,881	6.23%
ARI0248	315	8.39%	\$ 4,860,124	5.66%
AMU0167	115	3.06%	\$ 4,722,089	5.49%
AAG0025	138	3.68%	\$ 3,471,353	4.04%
ATS0013	148	3.94%	\$ 2,746,242	3.20%
ATE0041	142	3.78%	\$ 2,648,365	3.08%
ASP0122	25	0.67%	\$ 2,582,812	3.01%
AGI0035	74	1.97%	\$ 1,727,993	2.01%
AVE0083	71	1.89%	\$ 1,221,229	1.42%
Total	1,370	36.49%	\$ 34,782,646	40.47%

Top 10 Contract Balance

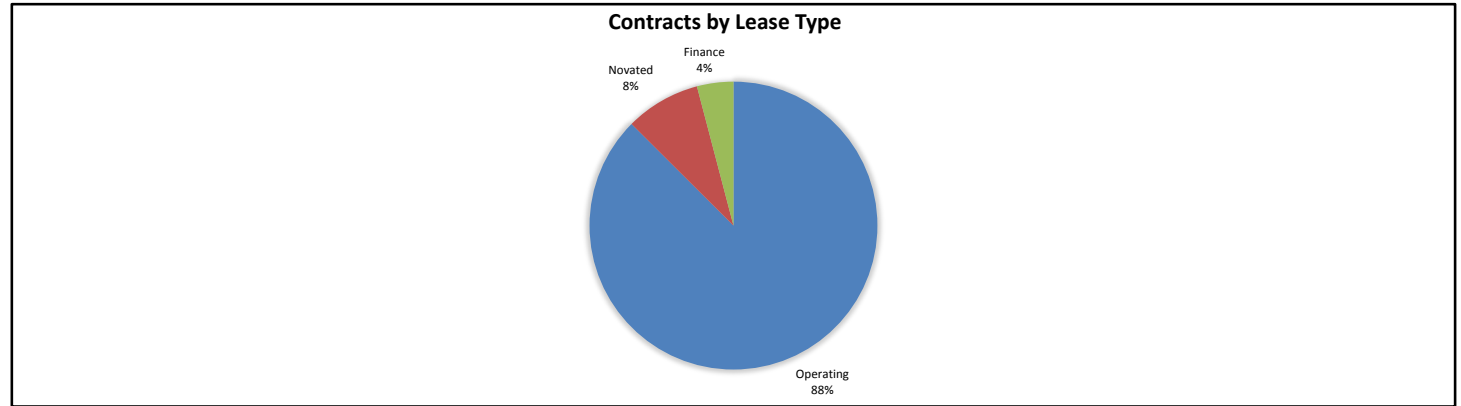
	Receivables Outstanding
1st Decile Upper Limit	\$ 196,131
2nd Decile Upper Limit	\$ 195,992
3rd Decile Upper Limit	\$ 173,851
4th Decile Upper Limit	\$ 173,541
5th Decile Upper Limit	\$ 172,065
6th Decile Upper Limit	\$ 168,763
7th Decile Upper Limit	\$ 167,007
8th Decile Upper Limit	\$ 161,303
9th Decile Upper Limit	\$ 161,170
10th Decile Upper Limit	\$ 160,412

Top 10 Contract Aggregate Balance

	Receivables Outstanding
Aggregate Balance- 1st Decile	\$ 196,131
Aggregate Balance- 2nd Decile	\$ 195,992
Aggregate Balance- 3rd Decile	\$ 173,851
Aggregate Balance- 4th Decile	\$ 173,541
Aggregate Balance- 5th Decile	\$ 172,065
Aggregate Balance- 6th Decile	\$ 168,763
Aggregate Balance- 7th Decile	\$ 167,007
Aggregate Balance- 8th Decile	\$ 161,303
Aggregate Balance- 9th Decile	\$ 161,170
Aggregate Balance- 10th Decile	\$ 160,412
Total	\$ 1,730,234

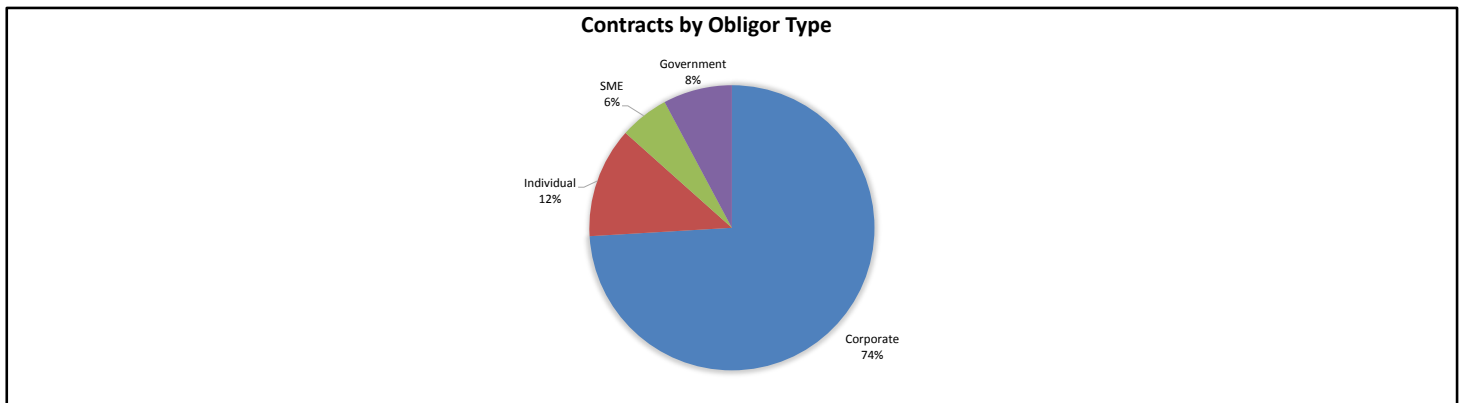
Contracts by Lease Type

Lease Type	Number of Contracts	(%) Number of Contracts	Receivables Outstanding	(%) Receivables Outstanding
Operating	3,225	85.91%	\$ 75,169,529	87.47%
Novated	338	9.00%	\$ 7,254,533	8.44%
Finance	191	5.09%	\$ 3,513,011	4.09%
Total	3,754	100.00%	\$ 85,937,073	100.00%



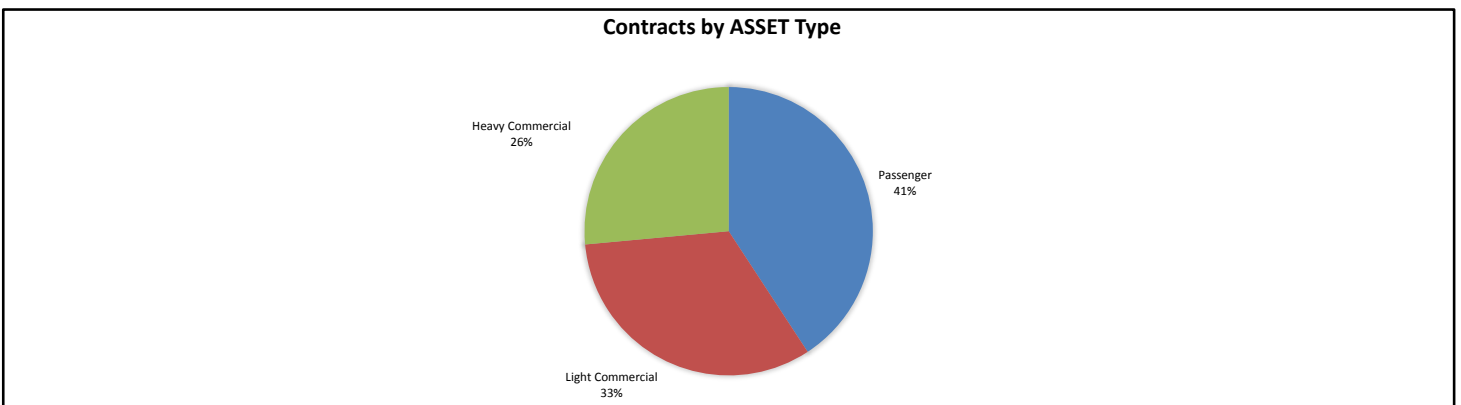
Contracts by Obligor Type

Obligor Type	Number of Contracts	(%) Number of Contracts	Receivables Outstanding	(%) Receivables Outstanding
Corporate	2,825	75.25%	\$ 63,644,298	74.06%
Individual	529	14.09%	\$ 10,767,544	12.53%
SME	276	7.35%	\$ 4,802,211	5.59%
Government	124	3.30%	\$ 6,723,021	7.82%
Total	3,754	100.00%	\$ 85,937,073	100.00%



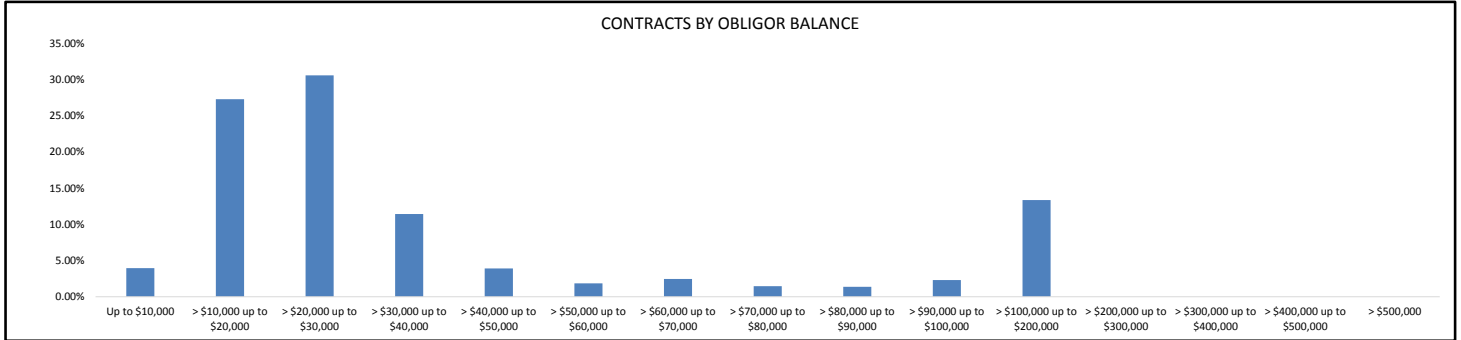
Contracts by Asset Type

Asset Type	Number of Contracts	(%) Number of Contracts	Receivables Outstanding	(%) Receivables Outstanding
Passenger	2,078	55.35%	\$ 35,037,219	40.77%
Light Commercial	1,308	34.84%	\$ 28,154,710	32.76%
Heavy Commercial	368	9.80%	\$ 22,745,145	26.47%
Total	3,754	100.00%	\$ 85,937,073	100.00%



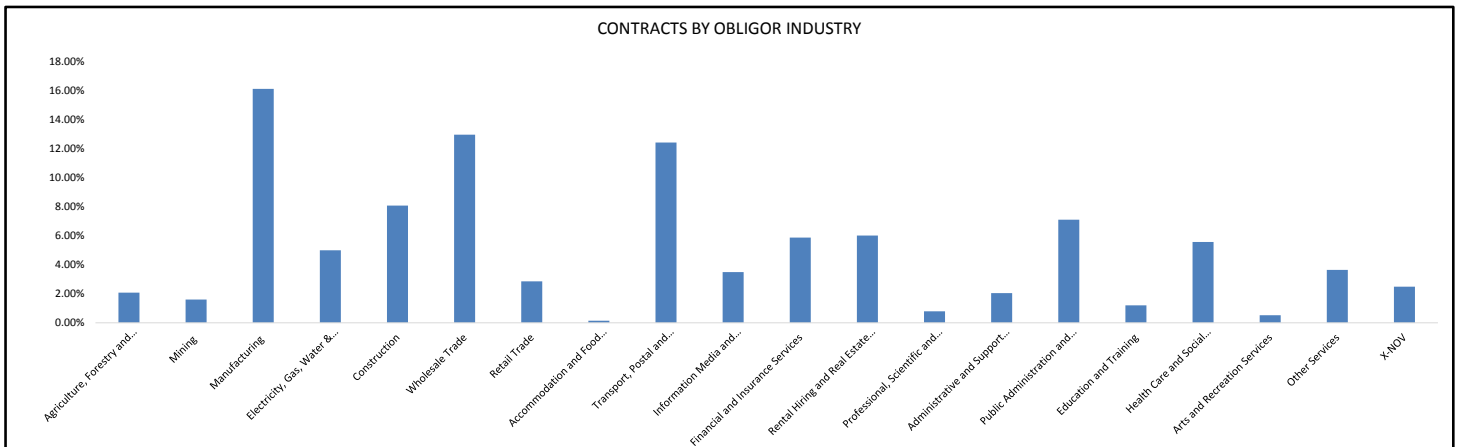
Contracts by Obligor Balance

Obligor Balance	Number of Contracts	(%) Number of Contracts	Receivables Outstanding	(%) Receivables Outstanding
Up to \$10,000	502	13.37%	\$ 3,389,134	3.94%
> \$10,000 up to \$20,000	1,579	42.06%	\$ 23,456,127	27.29%
> \$20,000 up to \$30,000	1,105	29.44%	\$ 26,288,819	30.59%
> \$30,000 up to \$40,000	290	7.73%	\$ 9,826,182	11.43%
> \$40,000 up to \$50,000	77	2.05%	\$ 3,366,364	3.92%
> \$50,000 up to \$60,000	29	0.77%	\$ 1,588,174	1.85%
> \$60,000 up to \$70,000	33	0.88%	\$ 2,111,718	2.46%
> \$70,000 up to \$80,000	17	0.45%	\$ 1,262,964	1.47%
> \$80,000 up to \$90,000	14	0.37%	\$ 1,180,254	1.37%
> \$90,000 up to \$100,000	21	0.56%	\$ 1,980,081	2.30%
> \$100,000 up to \$200,000	87	2.32%	\$ 11,487,259	13.37%
> \$200,000 up to \$300,000	0	0.00%	\$ -	0.00%
> \$300,000 up to \$400,000	0	0.00%	\$ -	0.00%
> \$400,000 up to \$500,000	0	0.00%	\$ -	0.00%
> \$500,000	0	0.00%	\$ -	0.00%
Total	3,754	100.00%	\$ 85,937,073	100.00%



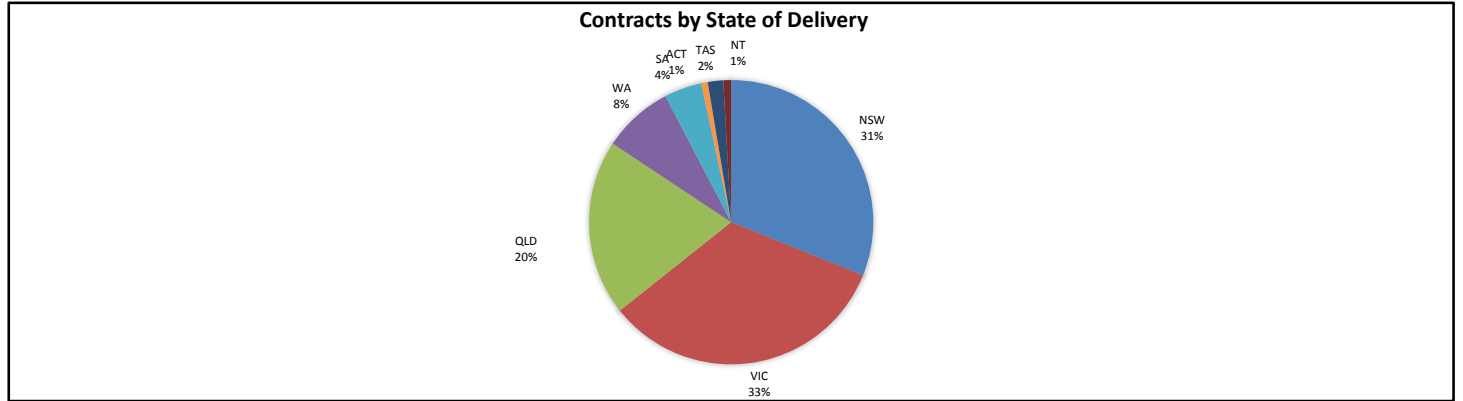
Contracts by Obligor Industry

Obligor Industry	Number of Contracts	(%) Number of Contracts	Receivables Outstanding	(%) Receivables Outstanding
ANZSIC Industry Division: Agriculture, Forestry and Fishing	81	2.16%	\$ 1,781,394	2.07%
ANZSIC Industry Division: Mining	53	1.41%	\$ 1,375,788	1.60%
ANZSIC Industry Division: Manufacturing	572	15.24%	\$ 13,850,055	16.12%
ANZSIC Industry Division: Electricity, Gas, Water and Waste Services	235	6.26%	\$ 4,291,494	4.99%
ANZSIC Industry Division: Construction	333	8.87%	\$ 6,944,795	8.08%
ANZSIC Industry Division: Wholesale Trade	514	13.69%	\$ 11,139,764	12.96%
ANZSIC Industry Division: Retail Trade	116	3.09%	\$ 2,457,487	2.86%
ANZSIC Industry Division: Accommodation and Food Services	7	0.19%	\$ 125,865	0.15%
ANZSIC Industry Division: Transport, Postal and Warehousing	208	5.54%	\$ 10,670,798	12.42%
ANZSIC Industry Division: Information Media and Telecommunications	153	4.08%	\$ 3,000,198	3.49%
ANZSIC Industry Division: Financial and Insurance Services	252	6.71%	\$ 5,042,282	5.87%
ANZSIC Industry Division: Rental, Hiring and Real Estate Services	341	9.08%	\$ 5,168,081	6.01%
ANZSIC Industry Division: Professional, Scientific and Technical Services	33	0.88%	\$ 684,461	0.80%
ANZSIC Industry Division: Administrative and Support Services	93	2.48%	\$ 1,757,191	2.04%
ANZSIC Industry Division: Public Administration and Safety	125	3.33%	\$ 6,103,587	7.10%
ANZSIC Industry Division: Education and Training	45	1.20%	\$ 1,030,398	1.20%
ANZSIC Industry Division: Health Care and Social Assistance	295	7.86%	\$ 4,787,861	5.57%
ANZSIC Industry Division: Arts and Recreational Services	37	0.99%	\$ 451,797	0.53%
Other Services	155	4.13%	\$ 3,133,991	3.65%
X-NOV	106	2.82%	\$ 2,139,785	2.49%
Total	3,754	100.00%	\$ 85,937,073	100.00%



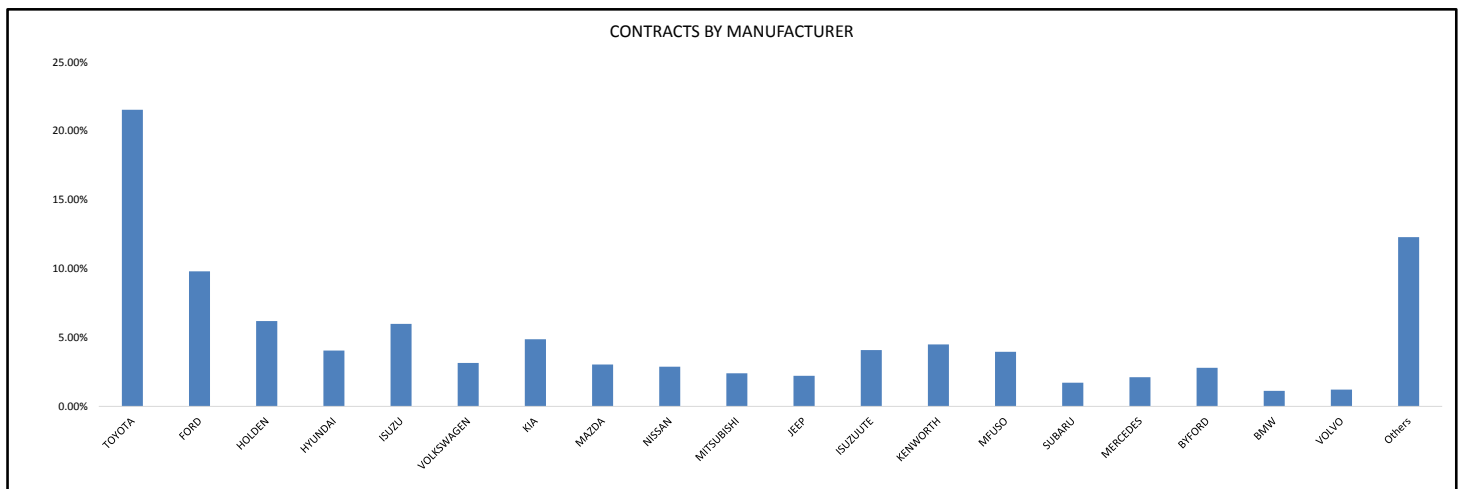
Contracts by State of Delivery

State of Delivery	Number of Contracts	(%) Number of Contracts	Receivables Outstanding	(%) Receivables Outstanding
NSW	1,073	28.58%	\$ 26,731,885	31.11%
VIC	1,242	33.08%	\$ 28,539,026	33.21%
QLD	782	20.83%	\$ 17,194,800	20.01%
WA	349	9.30%	\$ 6,894,698	8.02%
SA	168	4.48%	\$ 3,668,161	4.27%
ACT	30	0.80%	\$ 635,775	0.74%
TAS	73	1.94%	\$ 1,509,824	1.76%
NT	37	0.99%	\$ 762,904	0.89%
Total	3,754	100.00%	\$ 85,937,073	100.00%



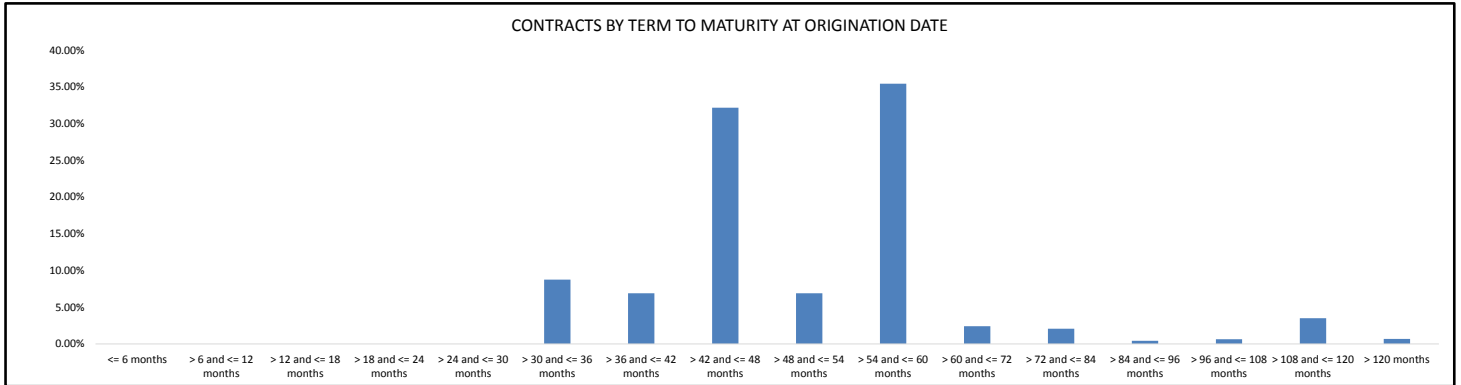
Contracts by Manufacturer

Manufacturer	Number of Contracts	(%) Number of Contracts	Receivables Outstanding	(%) Receivables Outstanding
TOYOTA	886	23.60%	\$ 18,512,409	21.54%
FORD	441	11.75%	\$ 8,430,211	9.81%
HOLDEN	336	8.95%	\$ 5,323,508	6.19%
HYUNDAI	265	7.06%	\$ 3,484,253	4.05%
ISUZU	103	2.74%	\$ 5,152,329	6.00%
VOLKSWAGEN	156	4.16%	\$ 2,711,597	3.16%
KIA	276	7.35%	\$ 4,186,766	4.87%
MAZDA	150	4.00%	\$ 2,612,217	3.04%
NISSAN	166	4.42%	\$ 2,477,164	2.88%
MITSUBISHI	111	2.96%	\$ 2,063,591	2.40%
JEEP	89	2.37%	\$ 1,909,563	2.22%
ISUZUUTE	162	4.32%	\$ 3,516,877	4.09%
KENWORTH	28	0.75%	\$ 3,863,743	4.50%
MFUSO	77	2.05%	\$ 3,404,362	3.96%
SUBARU	80	2.13%	\$ 1,476,050	1.72%
MERCEDES	53	1.41%	\$ 1,824,124	2.12%
BYFORD	21	0.56%	\$ 2,412,454	2.81%
BMW	29	0.77%	\$ 968,487	1.13%
VOLVO	14	0.37%	\$ 1,045,784	1.22%
Others	311	8.28%	\$ 10,561,584	12.29%
Total	3,754	100.00%	\$ 85,937,073	100.00%



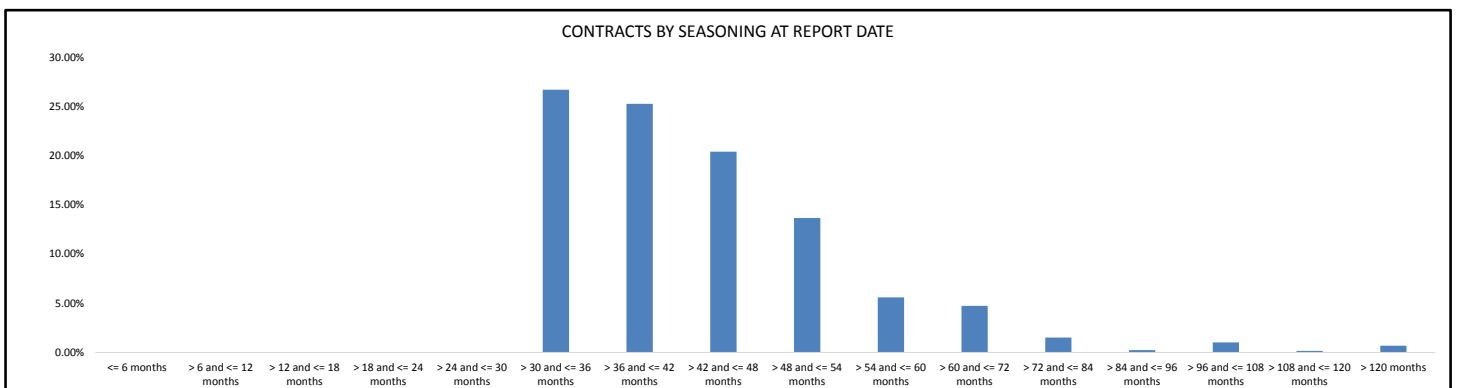
Contracts by Term to Maturity at Origination Date

Term to Maturity at Origination Date	Number of Contracts	(%) Number of Contracts	Receivables Outstanding	(%) Receivables Outstanding
<= 6 months	0	0.00%	\$ -	0.00%
> 6 and <= 12 months	0	0.00%	\$ -	0.00%
> 12 and <= 18 months	0	0.00%	\$ -	0.00%
> 18 and <= 24 months	0	0.00%	\$ -	0.00%
> 24 and <= 30 months	0	0.00%	\$ -	0.00%
> 30 and <= 36 months	444	11.83%	\$ 7,537,287	8.77%
> 36 and <= 42 months	337	8.98%	\$ 5,929,341	6.90%
> 42 and <= 48 months	1,327	35.35%	\$ 27,671,235	32.20%
> 48 and <= 54 months	385	10.26%	\$ 5,936,624	6.91%
> 54 and <= 60 months	1,031	27.46%	\$ 30,466,154	35.45%
> 60 and <= 72 months	106	2.82%	\$ 2,078,650	2.42%
> 72 and <= 84 months	41	1.09%	\$ 1,791,500	2.08%
> 84 and <= 96 months	13	0.35%	\$ 370,752	0.43%
> 96 and <= 108 months	12	0.32%	\$ 545,288	0.63%
> 108 and <= 120 months	33	0.88%	\$ 3,022,111	3.52%
> 120 months	25	0.67%	\$ 588,130	0.68%
Total	3,754	100.00%	\$ 85,937,073	100.00%



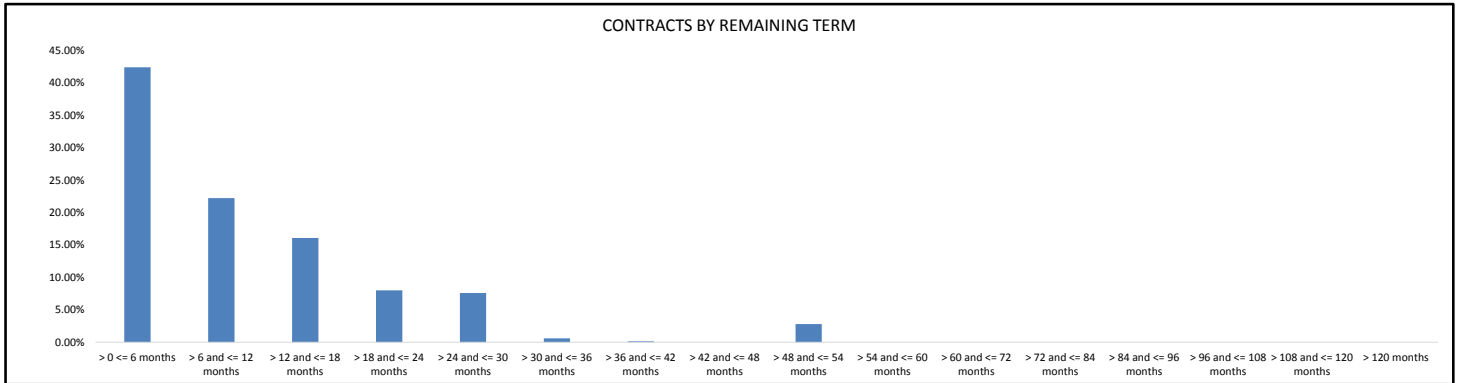
Contracts by Seasoning at Report Date

Seasoning at Report Date	Number of Contracts	(%) Number of Contracts	Receivables Outstanding	(%) Receivables Outstanding
<= 6 months	0	0.00%	\$ -	0.00%
> 6 and <= 12 months	0	0.00%	\$ -	0.00%
> 12 and <= 18 months	0	0.00%	\$ -	0.00%
> 18 and <= 24 months	0	0.00%	\$ -	0.00%
> 24 and <= 30 months	0	0.00%	\$ -	0.00%
> 30 and <= 36 months	924	24.61%	\$ 22,957,787	26.71%
> 36 and <= 42 months	997	26.56%	\$ 21,721,973	25.28%
> 42 and <= 48 months	861	22.94%	\$ 17,536,541	20.41%
> 48 and <= 54 months	520	13.85%	\$ 11,741,675	13.66%
> 54 and <= 60 months	258	6.87%	\$ 4,810,073	5.60%
> 60 and <= 72 months	100	2.66%	\$ 4,064,373	4.73%
> 72 and <= 84 months	36	0.96%	\$ 1,306,951	1.52%
> 84 and <= 96 months	11	0.29%	\$ 199,007	0.23%
> 96 and <= 108 months	19	0.51%	\$ 876,145	1.02%
> 108 and <= 120 months	3	0.08%	\$ 134,418	0.16%
> 120 months	25	0.67%	\$ 588,130	0.68%
Total	3,754	100.00%	\$ 85,937,073	100.00%



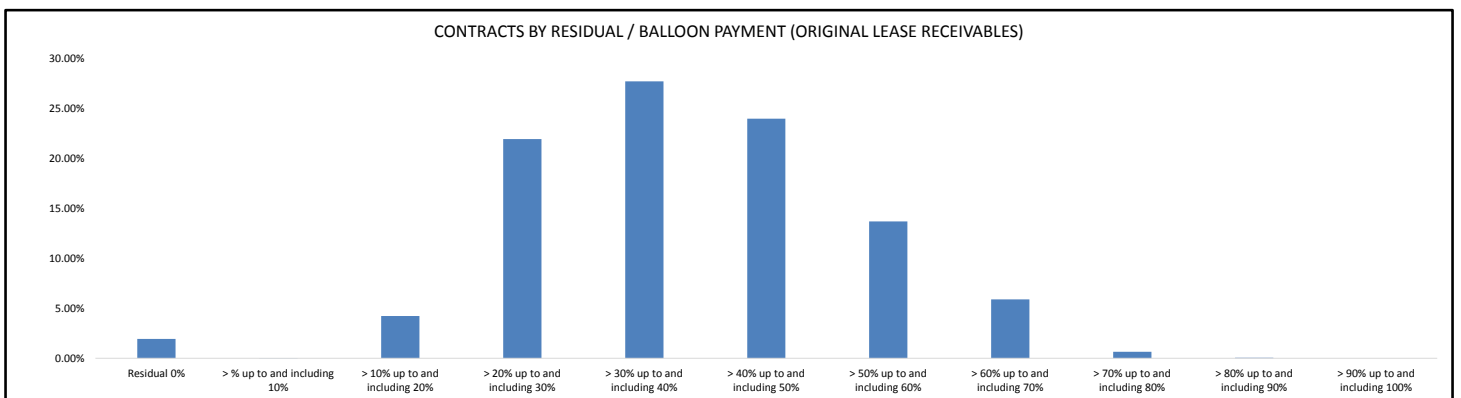
Contracts by Remaining Term

Remaining Term	Number of Contracts	(%) Number of Contracts	Receivables Outstanding	(%) Receivables Outstanding
> 0 <= 6 months	2,069	55.11%	\$ 36,481,253	42.45%
> 6 and <= 12 months	805	21.44%	\$ 19,129,522	22.26%
> 12 and <= 18 months	499	13.29%	\$ 13,832,530	16.10%
> 18 and <= 24 months	207	5.51%	\$ 6,885,682	8.01%
> 24 and <= 30 months	149	3.97%	\$ 6,543,362	7.61%
> 30 and <= 36 months	3	0.08%	\$ 519,457	0.60%
> 36 and <= 42 months	1	0.03%	\$ 132,813	0.15%
> 42 and <= 48 months	0	0.00%	\$ -	0.00%
> 48 and <= 54 months	21	0.56%	\$ 2,412,454	2.81%
> 54 and <= 60 months	0	0.00%	\$ -	0.00%
> 60 and <= 72 months	0	0.00%	\$ -	0.00%
> 72 and <= 84 months	0	0.00%	\$ -	0.00%
> 84 and <= 96 months	0	0.00%	\$ -	0.00%
> 96 and <= 108 months	0	0.00%	\$ -	0.00%
> 108 and <= 120 months	0	0.00%	\$ -	0.00%
> 120 months	0	0.00%	\$ -	0.00%
Total	3,754	100.00%	\$ 85,937,073	100.00%



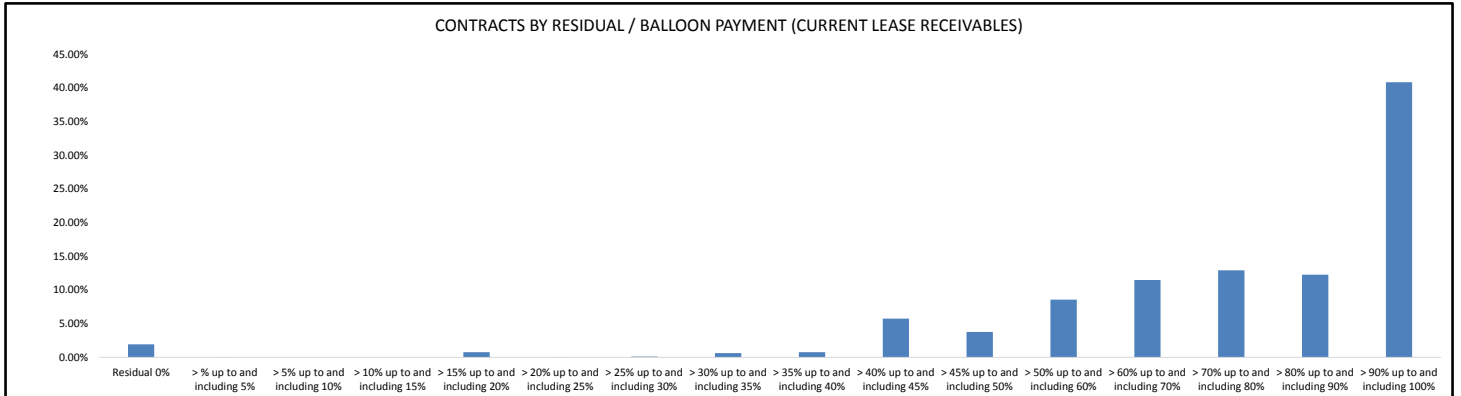
Contracts by Residual/Balloon Payment (Original Lease Receivables)

Residual/Balloon Payment (Original Lease Receivables)	Number of Contracts	(%) Number of Contracts	Receivables Outstanding	(%) Receivables Outstanding
Residual 0%	16	0.43%	\$ 1,667,955	1.94%
> % up to and including 10%	3	0.08%	\$ 19,950	0.02%
> 10% up to and including 20%	152	4.05%	\$ 3,626,286	4.22%
> 20% up to and including 30%	684	18.22%	\$ 18,833,289	21.92%
> 30% up to and including 40%	1,039	27.68%	\$ 23,786,587	27.68%
> 40% up to and including 50%	1,003	26.72%	\$ 20,589,083	23.96%
> 50% up to and including 60%	597	15.90%	\$ 11,757,367	13.68%
> 60% up to and including 70%	234	6.23%	\$ 5,055,178	5.88%
> 70% up to and including 80%	24	0.64%	\$ 555,755	0.65%
> 80% up to and including 90%	2	0.05%	\$ 45,624	0.05%
> 90% up to and including 100%	0	0.00%	\$ -	0.00%
Total	3,754	100.00%	\$ 85,937,073	100.00%



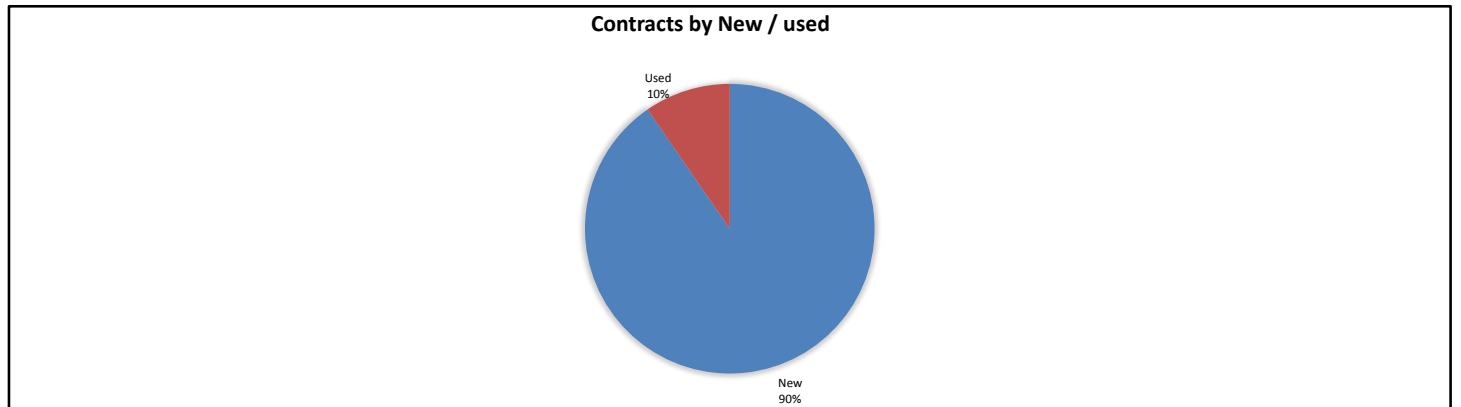
Contracts by Residual/Balloon Payment (Current Lease Receivables)

Residual/Balloon Payment (Current Lease Receivables)	Number of Contracts	(%) Number of Contracts	Receivables Outstanding	(%) Receivables Outstanding
Residual 0%	33	0.88%	\$ 1,668,942	1.94%
> % up to and including 5%	1	0.03%	\$ 3,809	0.00%
> 5% up to and including 10%	0	0.00%	\$ -	0.00%
> 10% up to and including 15%	0	0.00%	\$ -	0.00%
> 15% up to and including 20%	6	0.16%	\$ 674,332	0.78%
> 20% up to and including 25%	1	0.03%	\$ 1,508	0.00%
> 25% up to and including 30%	3	0.08%	\$ 113,687	0.13%
> 30% up to and including 35%	12	0.32%	\$ 548,910	0.64%
> 35% up to and including 40%	17	0.45%	\$ 665,117	0.77%
> 40% up to and including 45%	120	3.20%	\$ 4,943,393	5.75%
> 45% up to and including 50%	98	2.61%	\$ 3,242,266	3.77%
> 50% up to and including 60%	262	6.98%	\$ 7,383,176	8.59%
> 60% up to and including 70%	349	9.30%	\$ 9,879,514	11.50%
> 70% up to and including 80%	442	11.77%	\$ 11,123,996	12.94%
> 80% up to and including 90%	521	13.88%	\$ 10,549,478	12.28%
> 90% up to and including 100%	1,889	50.32%	\$ 35,138,946	40.89%
Total	3,754	100.00%	\$ 85,937,073	100.00%



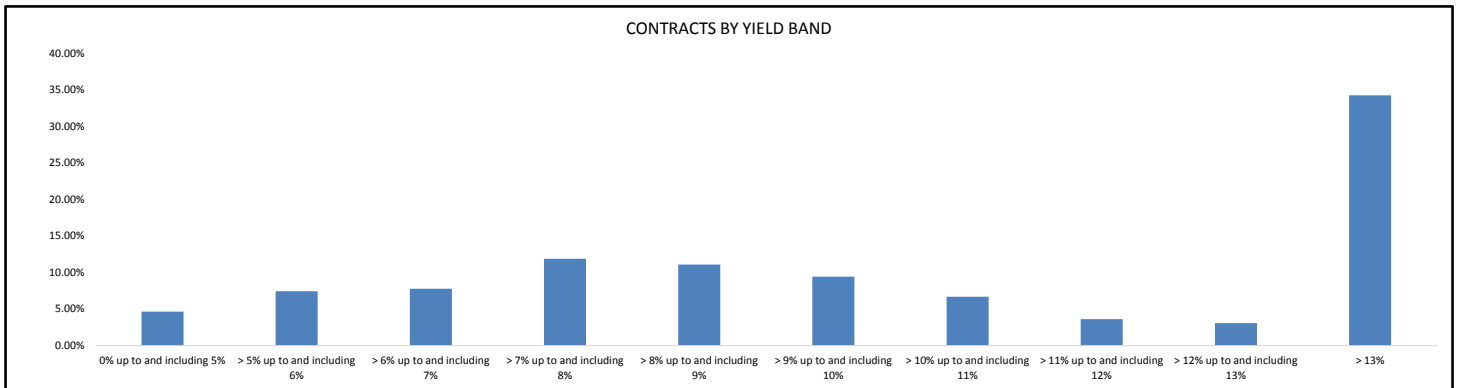
Contracts by New / Used

New / Used	Number of Contracts	(%) Number of Contracts	Receivables Outstanding	(%) Receivables Outstanding
New	3,514	93.61%	\$ 77,680,922	90.39%
Used	240	6.39%	\$ 8,256,151	9.61%
Total	3,754	100.00%	\$ 85,937,073	100.00%



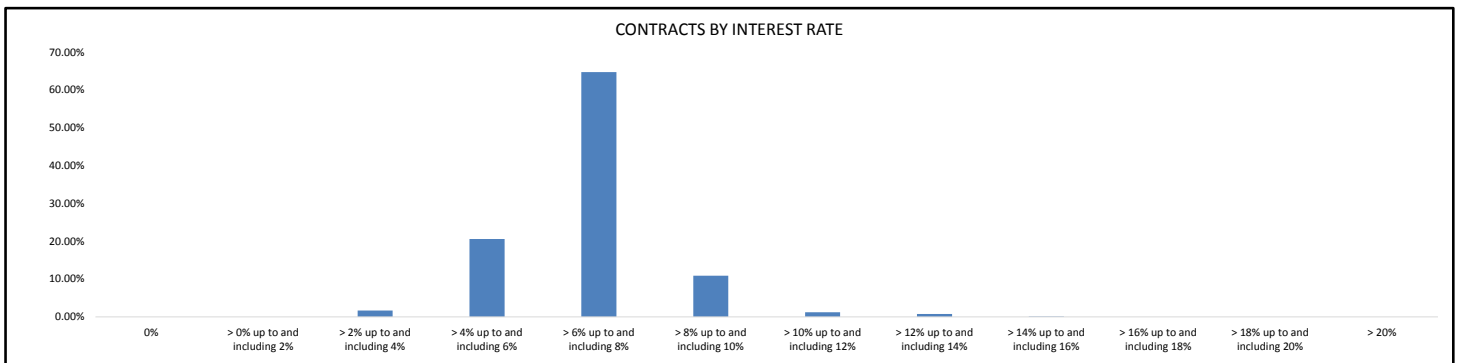
Contracts by Yield Band

Yield Band	Number of Contracts	(%) Number of Contracts	Receivables Outstanding	(%) Receivables Outstanding
0% up to and including 5%	215	5.73%	\$ 3,994,321	4.65%
> 5% up to and including 6%	178	4.74%	\$ 6,400,682	7.45%
> 6% up to and including 7%	212	5.65%	\$ 6,687,177	7.78%
> 7% up to and including 8%	285	7.59%	\$ 10,218,656	11.89%
> 8% up to and including 9%	342	9.11%	\$ 9,542,801	11.10%
> 9% up to and including 10%	387	10.31%	\$ 8,123,069	9.45%
> 10% up to and including 11%	267	7.11%	\$ 5,757,026	6.70%
> 11% up to and including 12%	183	4.87%	\$ 3,106,619	3.61%
> 12% up to and including 13%	160	4.26%	\$ 2,647,041	3.08%
> 13%	1,525	40.62%	\$ 29,459,681	34.28%
Total	3,754	100.00%	\$ 85,937,073	100.00%



Contracts by Interest Rate

Interest Rate	Number of Contracts	(%) Number of Contracts	Receivables Outstanding	(%) Receivables Outstanding
0%	0	0.00%	\$ -	0.00%
> 0% up to and including 2%	0	0.00%	\$ -	0.00%
> 2% up to and including 4%	77	2.05%	\$ 1,460,879	1.70%
> 4% up to and including 6%	631	16.81%	\$ 17,698,975	20.60%
> 6% up to and including 8%	2,540	67.66%	\$ 55,638,307	64.74%
> 8% up to and including 10%	451	12.01%	\$ 9,369,082	10.90%
> 10% up to and including 12%	41	1.09%	\$ 1,047,694	1.22%
> 12% up to and including 14%	11	0.29%	\$ 644,443	0.75%
> 14% up to and including 16%	3	0.08%	\$ 77,694	0.09%
> 16% up to and including 18%	0	0.00%	\$ -	0.00%
> 18% up to and including 20%	0	0.00%	\$ -	0.00%
> 20%	0	0.00%	\$ -	0.00%
Total	3,754	100.00%	\$ 85,937,073	100.00%



Trust Manager Contact Details

<p>Priya Prasad Senior Treasury Analyst Level 3, 40 River Blvd Richmond VIC 3121 Telephone: +61 3 8416 5472 Email : Priya.Prasad@eclipx.com</p>	<p>Kam Dyall Treasury Manager Level 3, 40 River Blvd Richmond VIC 3121 Telephone: +61 3 8416 5317 Email:kam.dyall@eclipx.com</p>
---	--

Fleet Partners Limited
Level 3, 40 River Boulevard Richmond, VIC 3121
Email: treasury@eclipx.com

Disclaimer

This Investor Report has been prepared on a confidential basis and is limited to the information with respect to the Eclipx Turbo Series 2017-1 transaction set out herein. Each investor or prospective investor is required to independently assess and determine the sufficiency of the information described in this Investor Report together with any other material made available to it for all purposes for which the information is used including, without limitation, decisions to make or continue to hold an investment in any security or other instrument and complying with any law or regulation applicable to it (including without limitation the Capital Requirements Regulation) Fleet Partners Pty Limited (ABN 63 006 706 832) has undertaken to the Trustee to hold, on an ongoing basis, a net economic interest in the securitised exposures in accordance with Article 405(1)(c) of Regulation (EU) No 575/2013 of the European Parliament and Council (the "Capital Requirements Regulation"). On the Issue Date, such interest was comprised of an interest in the Seller Note comprising no less than 5% of the aggregate principal balance of the securitised exposures in accordance with Article 405 of the Capital Requirements Regulation. There has been no change to the continued retention of this interest or to the manner in which this interest is comprised. None of Fleet Partners Pty Limited (ABN 63 006 706 832), Eclipx Group Limited (ABN 85 131 557 901), Perpetual Trustee Company Limited (ACN 000 001 007) nor any of their related bodies corporate or any of their officers, employees or external advisers to any of them or any of the other parties to the transaction, makes any representation as to the sufficiency of that information for those purposes. This Investor Report is not intended, in any jurisdiction, to be a recommendation, invitation, offer or solicitation or inducement to subscribe for or purchase, hold, continue to hold or sell any security or other instrument, or to engage in or refrain from engaging in any other transaction. This Investor Report is not and does not contain any financial, legal, accounting, investment, tax or other advice whatsoever. A credit rating is not a recommendation by any member of Fleet Partners Pty Limited (ABN 63 006 706 832), Eclipx Group Limited (ABN 85 131 557 901), Perpetual Trustee Company Limited (ABN 63 006 706 832), Eclipx Group Limited (ABN 85 131 557 901), Perpetual Trustee Company Limited (ACN 000 001 007) nor any of their related bodies corporate or any rating organisation to buy, sell or hold securities and may be subject to revision or withdrawal at any time by the assigning rating organisation.

