



FP Turbo Series 2016-1 Trust as at 30 September 2018

Portfolio Summary	
Portfolio size	\$ 139,785,152.63
Number of contracts	5,531
Number of obligors	742
Weighted average yield (p.a.)	10.58%
Average contract balance (current)	\$ 25,273.03
Maximum contract balance (current)	\$ 204,331.76
Average contract balance (original)	\$ 46,678.55
Maximum contract balance (original)	\$ 487,571.03
Weighted average total contract term (months)	52.32
Weighted average seasoning (months)	37.41
Weighted average remaining term (months)	14.91
Maximum remaining term (months)	61.05
Weighted average residual (current)	61.85%
Weighted average residual (original)	33.66%
Weighted average balloon percentage	70.99%
Balloon payments contract balance	\$ 137,854,681.54
Balloon payments contract count	5,506
Balloon payments value	\$ 99,237,864.29
Maximum balloon payment	\$ 189,486.36
Maximum contract balance	\$ 204,331.76

Top 10 Obligor

Customer Code	Number of Contracts	(%) Number of Contracts	Receivables Outstanding	(%) Receivables Outstanding
AAN0481	421	7.61%	\$ 9,717,036	6.95%
ARO0130	84	1.52%	\$ 6,607,768	4.73%
ARI0248	329	5.95%	\$ 5,928,715	4.24%
AAG0025	213	3.85%	\$ 5,734,700	4.10%
AMU0167	116	2.10%	\$ 5,535,154	3.96%
ATE0041	268	4.85%	\$ 5,391,465	3.86%
ASP0122	29	0.52%	\$ 3,302,932	2.36%
ATS0013	150	2.71%	\$ 3,274,687	2.34%
ARA0071	46	0.83%	\$ 2,326,068	1.66%
AGI0035	76	1.37%	\$ 2,162,544	1.55%
Total	1,732	31.31%	\$ 49,981,067	35.76%

Top 10 Contract Balance

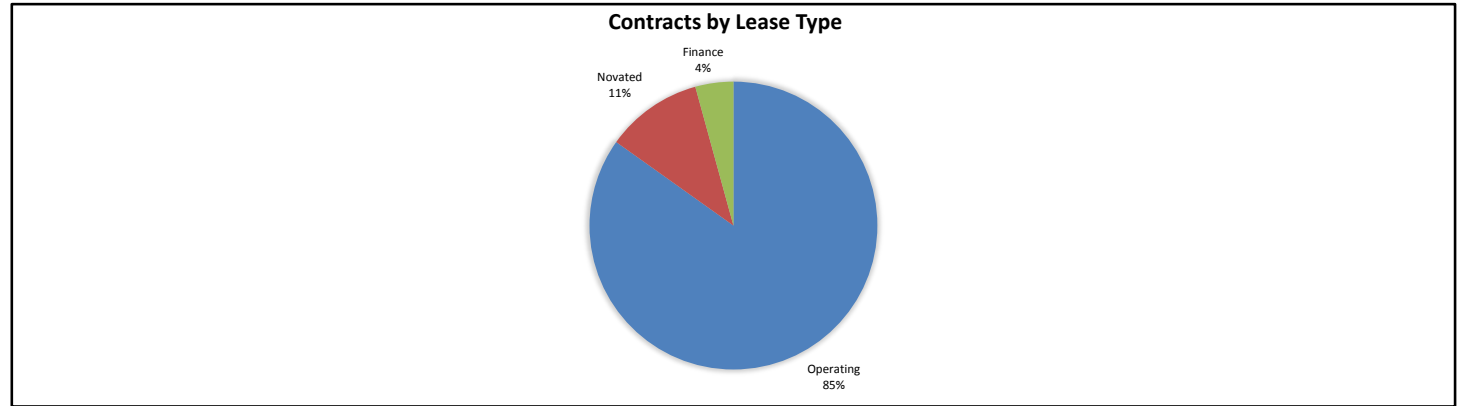
	Receivables Outstanding
1st Decile Upper Limit	\$ 204,332
2nd Decile Upper Limit	\$ 204,156
3rd Decile Upper Limit	\$ 200,175
4th Decile Upper Limit	\$ 199,784
5th Decile Upper Limit	\$ 198,100
6th Decile Upper Limit	\$ 197,938
7th Decile Upper Limit	\$ 197,363
8th Decile Upper Limit	\$ 196,036
9th Decile Upper Limit	\$ 192,164
10th Decile Upper Limit	\$ 191,724

Top 10 Contract Aggregate Balance

	Receivables Outstanding
Aggregate Balance- 1st Decile	\$ 595,578
Aggregate Balance- 2nd Decile	\$ 397,800
Aggregate Balance- 3rd Decile	\$ 206,634
Aggregate Balance- 4th Decile	\$ 206,104
Aggregate Balance- 5th Decile	\$ 206,031
Aggregate Balance- 6th Decile	\$ 205,920
Aggregate Balance- 7th Decile	\$ 205,623
Aggregate Balance- 8th Decile	\$ 204,838
Aggregate Balance- 9th Decile	\$ 203,697
Aggregate Balance- 10th Decile	\$ 203,544
Total	\$ 2,635,768

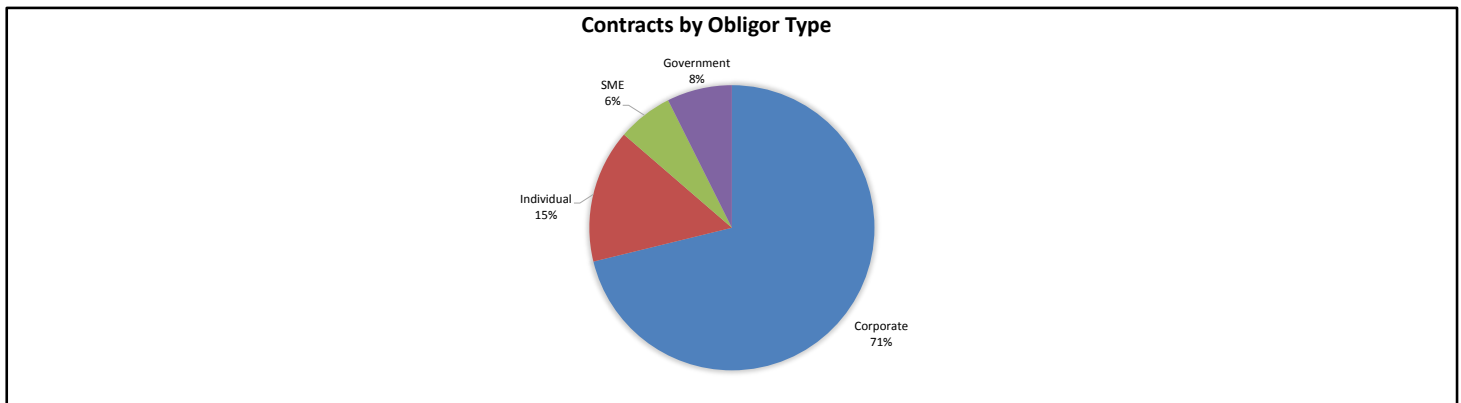
Contracts by Lease Type

Lease Type	Number of Contracts	(%) Number of Contracts	Receivables Outstanding	(%) Receivables Outstanding
Operating	4,707	85.10%	\$ 118,610,036	84.85%
Novated	565	10.22%	\$ 15,207,195	10.88%
Finance	259	4.68%	\$ 5,967,922	4.27%
Total	5,531	100.00%	\$ 139,785,153	100.00%



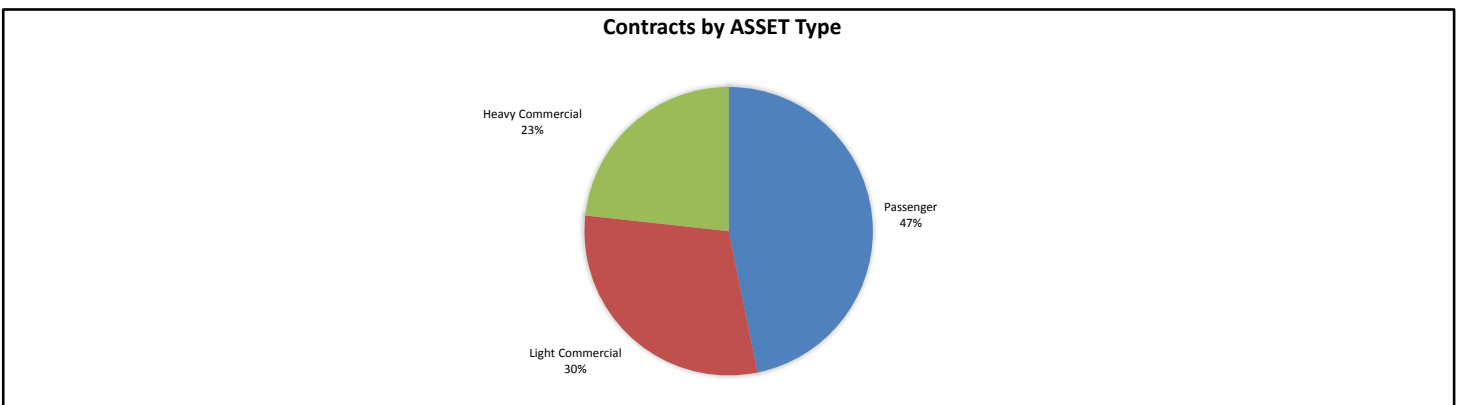
Contracts by Obligor Type

Obligor Type	Number of Contracts	(%) Number of Contracts	Receivables Outstanding	(%) Receivables Outstanding
Corporate	4,035	72.95%	\$ 99,509,825	71.19%
Individual	824	14.90%	\$ 21,175,117	15.15%
SME	471	8.52%	\$ 8,781,354	6.28%
Government	201	3.63%	\$ 10,318,857	7.38%
Total	5,531	100.00%	\$ 139,785,153	100.00%



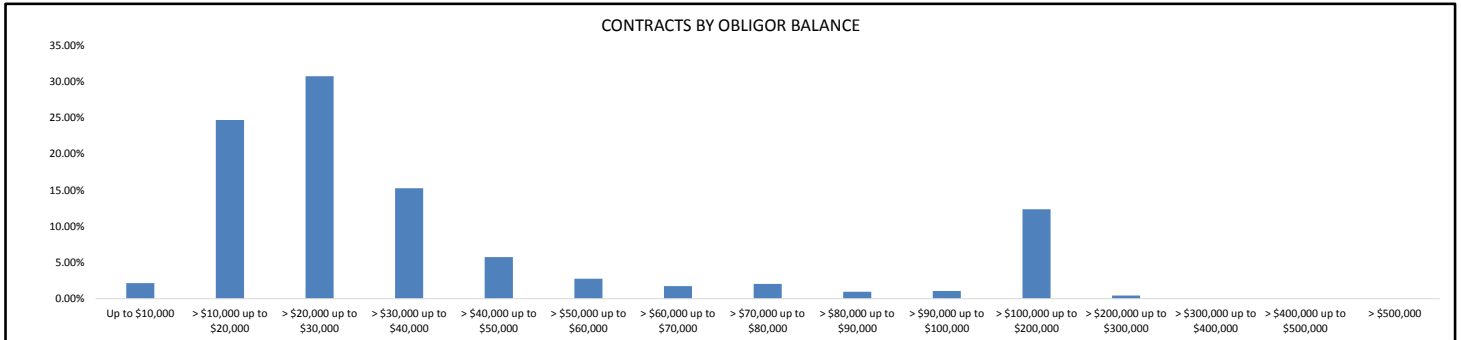
Contracts by Asset Type

Asset Type	Number of Contracts	(%) Number of Contracts	Receivables Outstanding	(%) Receivables Outstanding
Passenger	3,310	59.84%	\$ 65,409,052	46.79%
Light Commercial	1,737	31.40%	\$ 41,851,256	29.94%
Heavy Commercial	484	8.75%	\$ 32,524,845	23.27%
Total	5,531	100.00%	\$ 139,785,153	100.00%



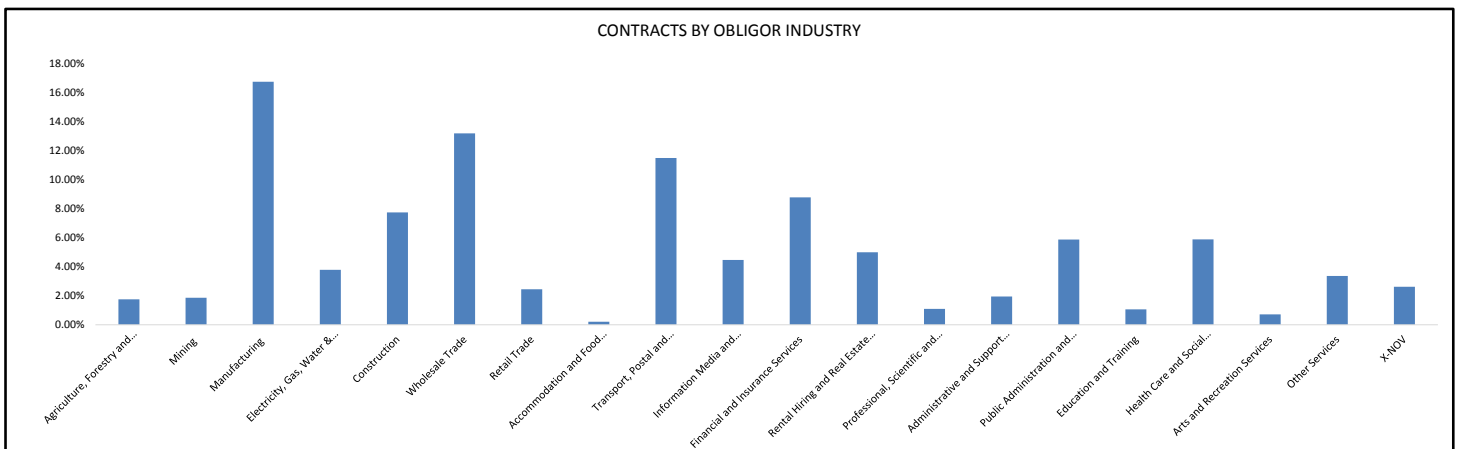
Contracts by Obligor Balance

Obligor Balance	Number of Contracts	(%) Number of Contracts	Receivables Outstanding	(%) Receivables Outstanding
Up to \$10,000	397	7.18%	\$ 3,002,961	2.15%
> \$10,000 up to \$20,000	2,268	41.01%	\$ 34,512,524	24.69%
> \$20,000 up to \$30,000	1,753	31.69%	\$ 42,980,172	30.75%
> \$30,000 up to \$40,000	623	11.26%	\$ 21,346,668	15.27%
> \$40,000 up to \$50,000	185	3.34%	\$ 8,039,054	5.75%
> \$50,000 up to \$60,000	71	1.28%	\$ 3,870,302	2.77%
> \$60,000 up to \$70,000	38	0.69%	\$ 2,428,931	1.74%
> \$70,000 up to \$80,000	39	0.71%	\$ 2,871,275	2.05%
> \$80,000 up to \$90,000	16	0.29%	\$ 1,336,336	0.96%
> \$90,000 up to \$100,000	16	0.29%	\$ 1,499,347	1.07%
> \$100,000 up to \$200,000	122	2.21%	\$ 17,288,921	12.37%
> \$200,000 up to \$300,000	3	0.05%	\$ 608,663	0.44%
> \$300,000 up to \$400,000	0	0.00%	\$ -	0.00%
> \$400,000 up to \$500,000	0	0.00%	\$ -	0.00%
> \$500,000	0	0.00%	\$ -	0.00%
Total	5,531	100.00%	\$ 139,785,153	100.00%



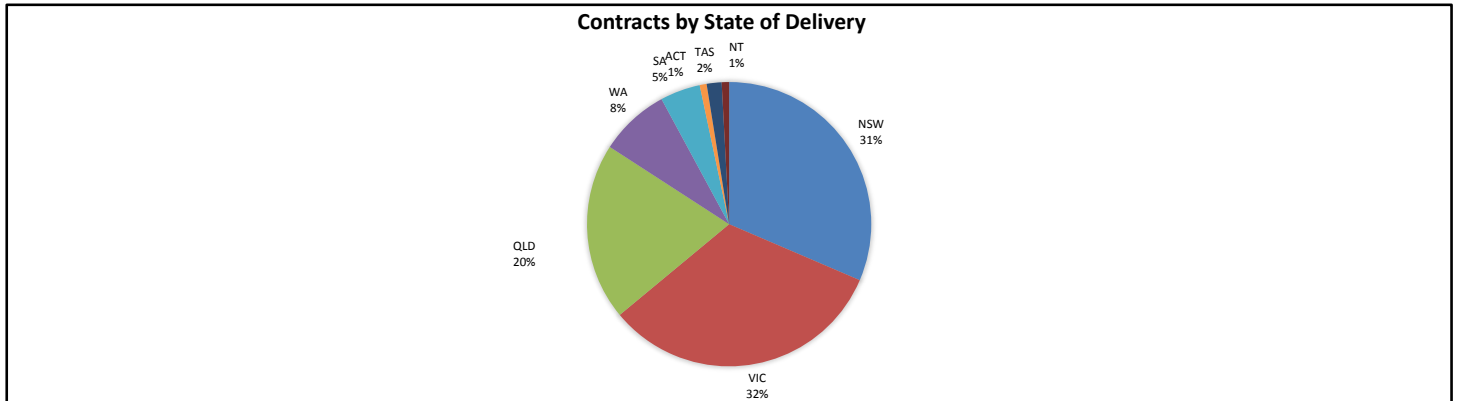
Contracts by Obligor Industry

Obligor Industry	Number of Contracts	(%) Number of Contracts	Receivables Outstanding	(%) Receivables Outstanding
ANZSIC Industry Division: Agriculture, Forestry and Fishing	99	1.79%	\$ 2,454,808	1.76%
ANZSIC Industry Division: Mining	90	1.63%	\$ 2,600,747	1.86%
ANZSIC Industry Division: Manufacturing	858	15.51%	\$ 23,405,797	16.74%
ANZSIC Industry Division: Electricity, Gas, Water and Waste Services	242	4.38%	\$ 5,287,984	3.78%
ANZSIC Industry Division: Construction	448	8.10%	\$ 10,827,870	7.75%
ANZSIC Industry Division: Wholesale Trade	768	13.89%	\$ 18,429,904	13.18%
ANZSIC Industry Division: Retail Trade	164	2.97%	\$ 3,416,364	2.44%
ANZSIC Industry Division: Accommodation and Food Services	14	0.25%	\$ 283,592	0.20%
ANZSIC Industry Division: Transport, Postal and Warehousing	305	5.51%	\$ 16,057,240	11.49%
ANZSIC Industry Division: Information Media and Telecommunications	299	5.41%	\$ 6,247,807	4.47%
ANZSIC Industry Division: Financial and Insurance Services	534	9.65%	\$ 12,274,517	8.78%
ANZSIC Industry Division: Rental, Hiring and Real Estate Services	378	6.83%	\$ 6,977,648	4.99%
ANZSIC Industry Division: Professional, Scientific and Technical Services	65	1.18%	\$ 1,521,858	1.09%
ANZSIC Industry Division: Administrative and Support Services	130	2.35%	\$ 2,725,876	1.95%
ANZSIC Industry Division: Public Administration and Safety	168	3.04%	\$ 8,207,861	5.87%
ANZSIC Industry Division: Education and Training	65	1.18%	\$ 1,483,509	1.06%
ANZSIC Industry Division: Health Care and Social Assistance	494	8.93%	\$ 8,225,179	5.88%
ANZSIC Industry Division: Arts and Recreational Services	57	1.03%	\$ 998,159	0.71%
Other Services	196	3.54%	\$ 4,695,034	3.36%
X-NOV	157	2.84%	\$ 3,663,397	2.62%
Total	5,531	100.00%	\$ 139,785,153	100.00%



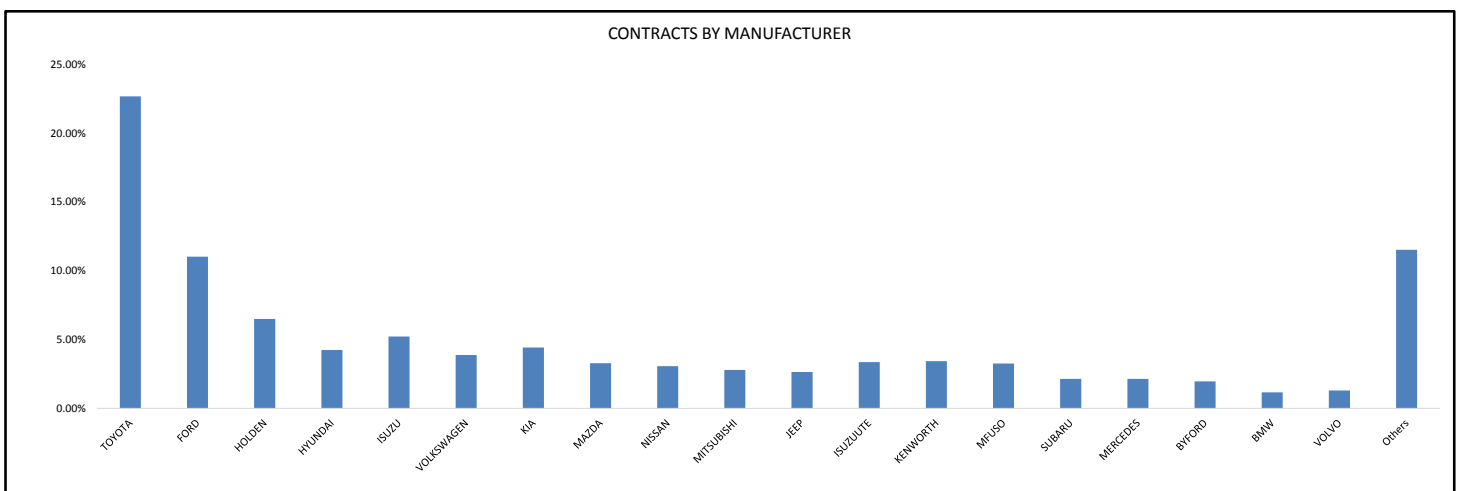
Contracts by State of Delivery

State of Delivery	Number of Contracts	(%) Number of Contracts	Receivables Outstanding	(%) Receivables Outstanding
NSW	1,591	28.77%	\$ 43,956,764	31.45%
VIC	1,811	32.74%	\$ 45,481,179	32.54%
QLD	1,144	20.68%	\$ 28,179,899	20.16%
WA	505	9.13%	\$ 11,138,158	7.97%
SA	283	5.12%	\$ 6,376,923	4.56%
ACT	45	0.81%	\$ 1,103,780	0.79%
TAS	106	1.92%	\$ 2,376,555	1.70%
NT	46	0.83%	\$ 1,171,896	0.84%
Total	5,531	100.00%	\$ 139,785,153	100.00%



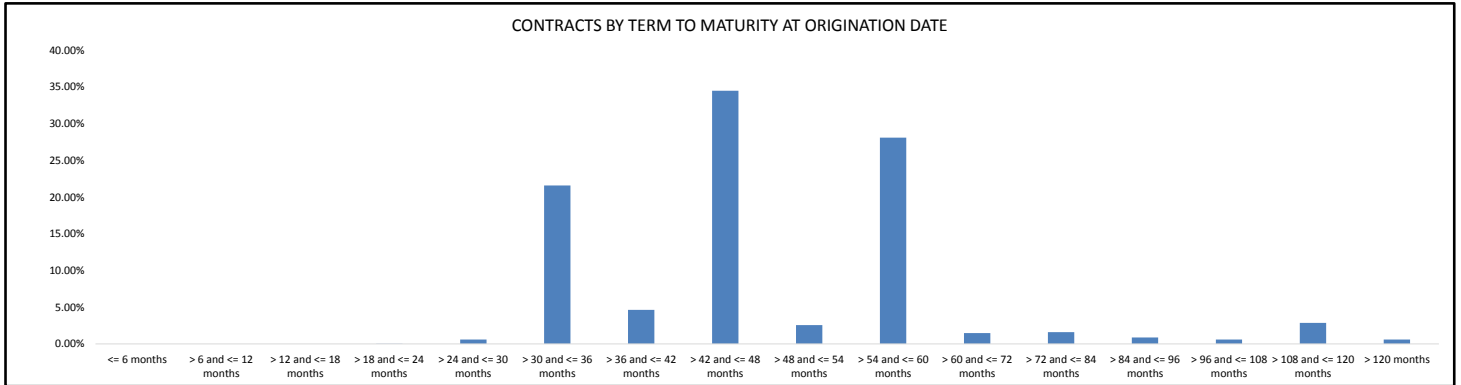
Contracts by Manufacturer

Manufacturer	Number of Contracts	(%) Number of Contracts	Receivables Outstanding	(%) Receivables Outstanding
TOYOTA	1,385	25.04%	\$ 31,678,535	22.66%
FORD	713	12.89%	\$ 15,399,005	11.02%
HOLDEN	498	9.00%	\$ 9,085,411	6.50%
HYUNDAI	356	6.44%	\$ 5,922,254	4.24%
ISUZU	124	2.24%	\$ 7,289,592	5.21%
VOLKSWAGEN	270	4.88%	\$ 5,422,128	3.88%
KIA	345	6.24%	\$ 6,179,983	4.42%
MAZDA	232	4.19%	\$ 4,589,250	3.28%
NISSAN	235	4.25%	\$ 4,288,476	3.07%
MITSUBISHI	197	3.56%	\$ 3,907,841	2.80%
JEEP	154	2.78%	\$ 3,694,889	2.64%
ISUZUUTE	185	3.34%	\$ 4,704,176	3.37%
KENWORTH	29	0.52%	\$ 4,793,989	3.43%
MFUSO	89	1.61%	\$ 4,559,782	3.26%
SUBARU	142	2.57%	\$ 2,993,865	2.14%
MERCEDES	71	1.28%	\$ 2,995,939	2.14%
BYFORD	21	0.38%	\$ 2,737,165	1.96%
BMW	40	0.72%	\$ 1,630,637	1.17%
VOLVO	24	0.43%	\$ 1,811,340	1.30%
Others	421	7.61%	\$ 16,100,895	11.52%
Total	5,531	100.00%	\$ 139,785,153	100.00%



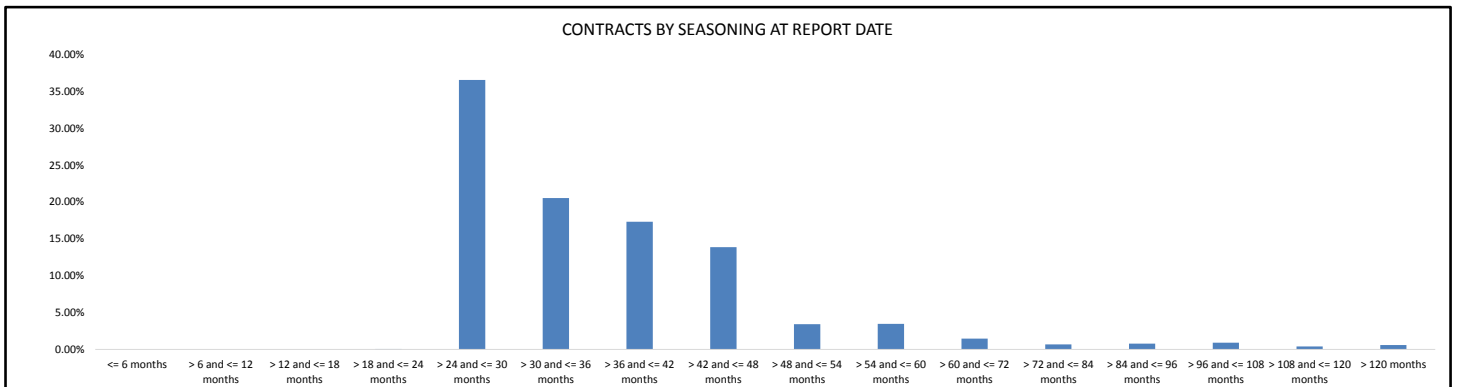
Contracts by Term to Maturity at Origination Date

Term to Maturity at Origination Date	Number of Contracts	(%) Number of Contracts	Receivables Outstanding	(%) Receivables Outstanding
<= 6 months	0	0.00%	\$ -	0.00%
> 6 and <= 12 months	0	0.00%	\$ -	0.00%
> 12 and <= 18 months	0	0.00%	\$ -	0.00%
> 18 and <= 24 months	2	0.04%	\$ 40,836	0.03%
> 24 and <= 30 months	51	0.92%	\$ 830,239	0.59%
> 30 and <= 36 months	1,442	26.07%	\$ 30,171,270	21.58%
> 36 and <= 42 months	358	6.47%	\$ 6,495,476	4.65%
> 42 and <= 48 months	2,109	38.13%	\$ 48,230,746	34.50%
> 48 and <= 54 months	233	4.21%	\$ 3,577,004	2.56%
> 54 and <= 60 months	1,115	20.16%	\$ 39,275,389	28.10%
> 60 and <= 72 months	64	1.16%	\$ 2,052,346	1.47%
> 72 and <= 84 months	48	0.87%	\$ 2,227,396	1.59%
> 84 and <= 96 months	24	0.43%	\$ 1,221,436	0.87%
> 96 and <= 108 months	20	0.36%	\$ 848,962	0.61%
> 108 and <= 120 months	43	0.78%	\$ 3,991,736	2.86%
> 120 months	22	0.40%	\$ 822,319	0.59%
Total	5,531	100.00%	\$ 139,785,153	100.00%



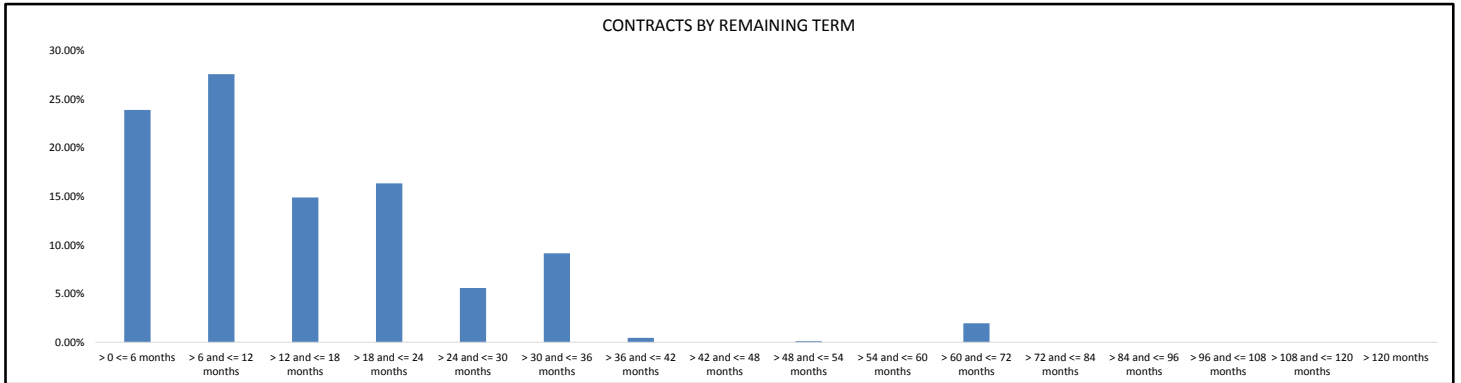
Contracts by Seasoning at Report Date

Seasoning at Report Date	Number of Contracts	(%) Number of Contracts	Receivables Outstanding	(%) Receivables Outstanding
<= 6 months	0	0.00%	\$ -	0.00%
> 6 and <= 12 months	0	0.00%	\$ -	0.00%
> 12 and <= 18 months	0	0.00%	\$ -	0.00%
> 18 and <= 24 months	4	0.07%	\$ 78,582	0.06%
> 24 and <= 30 months	1,816	32.83%	\$ 51,058,710	36.53%
> 30 and <= 36 months	1,252	22.64%	\$ 28,673,455	20.51%
> 36 and <= 42 months	1,069	19.33%	\$ 24,205,354	17.32%
> 42 and <= 48 months	848	15.33%	\$ 19,371,795	13.86%
> 48 and <= 54 months	261	4.72%	\$ 4,788,885	3.43%
> 54 and <= 60 months	109	1.97%	\$ 4,846,157	3.47%
> 60 and <= 72 months	58	1.05%	\$ 2,049,262	1.47%
> 72 and <= 84 months	30	0.54%	\$ 951,126	0.68%
> 84 and <= 96 months	26	0.47%	\$ 1,090,161	0.78%
> 96 and <= 108 months	24	0.43%	\$ 1,280,698	0.92%
> 108 and <= 120 months	12	0.22%	\$ 568,648	0.41%
> 120 months	22	0.40%	\$ 822,319	0.59%
Total	5,531	100.00%	\$ 139,785,153	100.00%



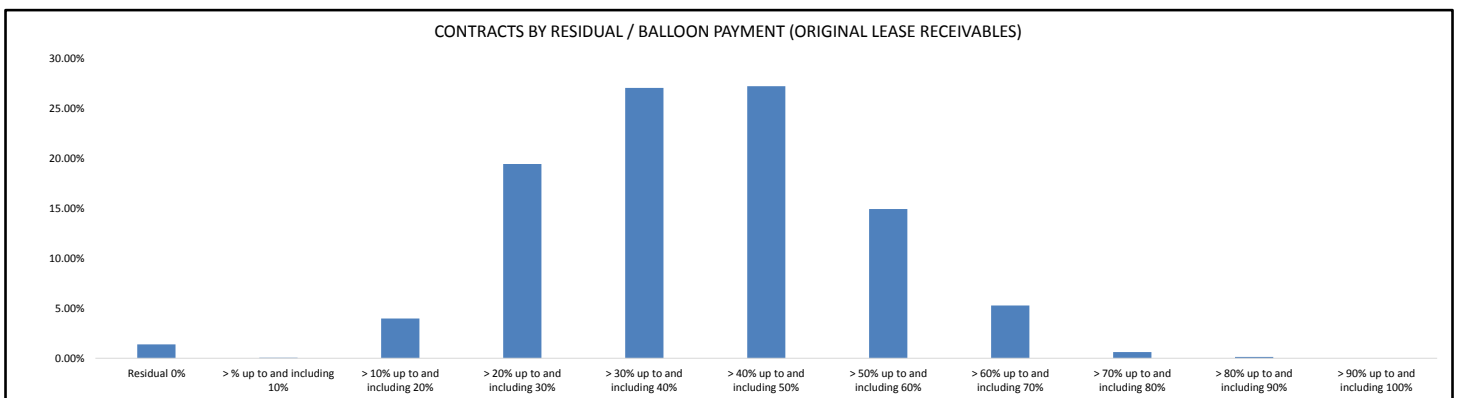
Contracts by Remaining Term

Remaining Term	Number of Contracts	(%) Number of Contracts	Receivables Outstanding	(%) Receivables Outstanding
> 0 <= 6 months	1,839	33.25%	\$ 33,414,204	23.90%
> 6 and <= 12 months	1,674	30.27%	\$ 38,561,922	27.59%
> 12 and <= 18 months	780	14.10%	\$ 20,821,708	14.90%
> 18 and <= 24 months	718	12.98%	\$ 22,866,244	16.36%
> 24 and <= 30 months	208	3.76%	\$ 7,814,702	5.59%
> 30 and <= 36 months	285	5.15%	\$ 12,783,248	9.14%
> 36 and <= 42 months	5	0.09%	\$ 638,436	0.46%
> 42 and <= 48 months	0	0.00%	\$ -	0.00%
> 48 and <= 54 months	1	0.02%	\$ 147,524	0.11%
> 54 and <= 60 months	0	0.00%	\$ -	0.00%
> 60 and <= 72 months	21	0.38%	\$ 2,737,165	1.96%
> 72 and <= 84 months	0	0.00%	\$ -	0.00%
> 84 and <= 96 months	0	0.00%	\$ -	0.00%
> 96 and <= 108 months	0	0.00%	\$ -	0.00%
> 108 and <= 120 months	0	0.00%	\$ -	0.00%
> 120 months	0	0.00%	\$ -	0.00%
Total	5,531	100.00%	\$ 139,785,153	100.00%



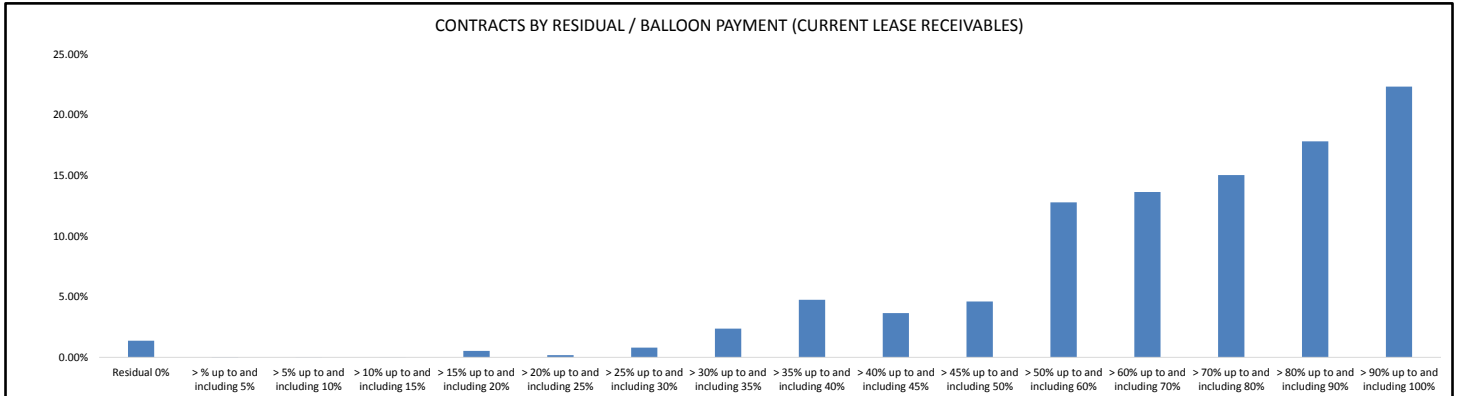
Contracts by Residual/Balloon Payment (Original Lease Receivables)

Residual/Balloon Payment (Original Lease Receivables)	Number of Contracts	(%) Number of Contracts	Receivables Outstanding	(%) Receivables Outstanding
Residual 0%	16	0.29%	\$ 1,930,471	1.38%
> % up to and including 10%	9	0.16%	\$ 67,198	0.05%
> 10% up to and including 20%	180	3.25%	\$ 5,553,756	3.97%
> 20% up to and including 30%	846	15.30%	\$ 27,150,088	19.42%
> 30% up to and including 40%	1,453	26.27%	\$ 37,784,270	27.03%
> 40% up to and including 50%	1,702	30.77%	\$ 38,022,028	27.20%
> 50% up to and including 60%	981	17.74%	\$ 20,859,589	14.92%
> 60% up to and including 70%	302	5.46%	\$ 7,364,870	5.27%
> 70% up to and including 80%	34	0.61%	\$ 858,618	0.61%
> 80% up to and including 90%	8	0.14%	\$ 194,265	0.14%
> 90% up to and including 100%	0	0.00%	\$ -	0.00%
Total	5,531	100.00%	\$ 139,785,153	100.00%



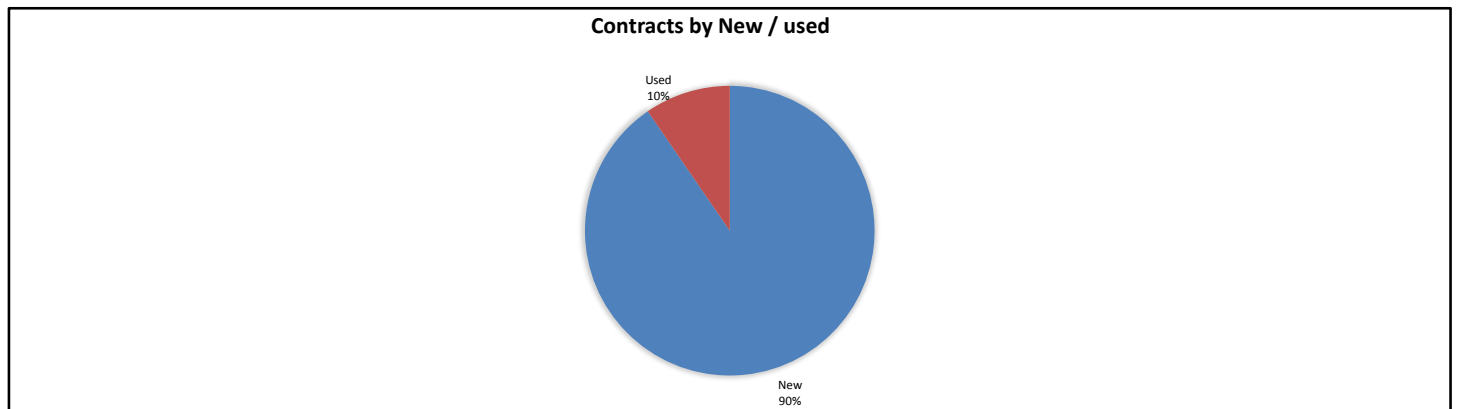
Contracts by Residual/Balloon Payment (Current Lease Receivables)

Residual/Balloon Payment (Current Lease Receivables)	Number of Contracts	(%) Number of Contracts	Receivables Outstanding	(%) Receivables Outstanding
Residual 0%	25	0.45%	\$ 1,930,471	1.38%
> % up to and including 5%	5	0.09%	\$ 44,134	0.03%
> 5% up to and including 10%	1	0.02%	\$ 4,941	0.00%
> 10% up to and including 15%	1	0.02%	\$ 18,952	0.01%
> 15% up to and including 20%	5	0.09%	\$ 736,409	0.53%
> 20% up to and including 25%	5	0.09%	\$ 254,494	0.18%
> 25% up to and including 30%	24	0.43%	\$ 1,129,304	0.81%
> 30% up to and including 35%	70	1.27%	\$ 3,319,371	2.37%
> 35% up to and including 40%	150	2.71%	\$ 6,642,123	4.75%
> 40% up to and including 45%	163	2.95%	\$ 5,103,641	3.65%
> 45% up to and including 50%	203	3.67%	\$ 6,437,149	4.61%
> 50% up to and including 60%	521	9.42%	\$ 17,889,745	12.80%
> 60% up to and including 70%	727	13.14%	\$ 19,069,909	13.64%
> 70% up to and including 80%	885	16.00%	\$ 21,034,429	15.05%
> 80% up to and including 90%	1,146	20.72%	\$ 24,924,444	17.83%
> 90% up to and including 100%	1,600	28.93%	\$ 31,245,636	22.35%
Total	5,531	100.00%	\$ 139,785,153	100.00%



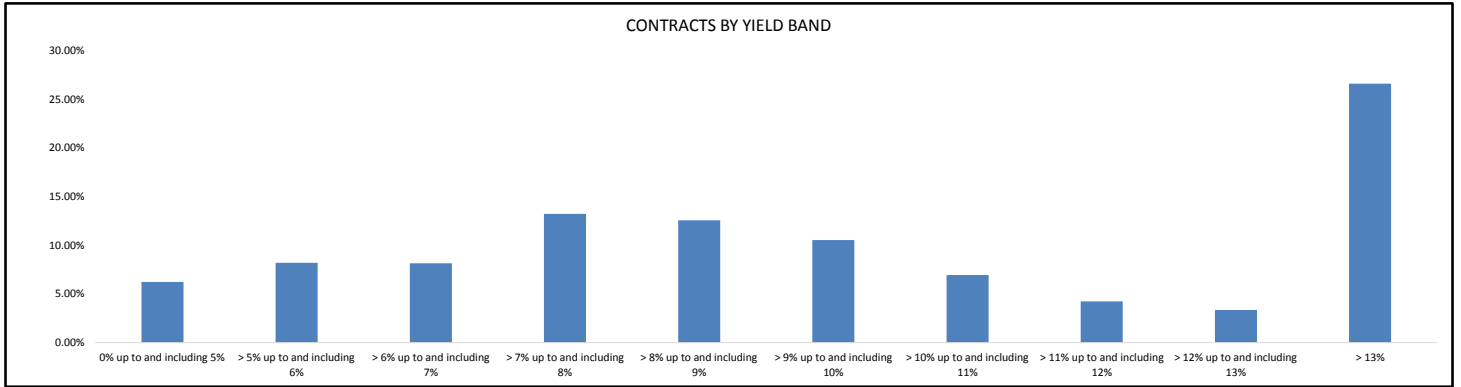
Contracts by New / Used

New / Used	Number of Contracts	(%) Number of Contracts	Receivables Outstanding	(%) Receivables Outstanding
New	5,147	93.06%	\$ 126,404,728	90.43%
Used	384	6.94%	\$ 13,380,425	9.57%
Total	5,531	100.00%	\$ 139,785,153	100.00%



Contracts by Yield Band

Yield Band	Number of Contracts	(%) Number of Contracts	Receivables Outstanding	(%) Receivables Outstanding
0% up to and including 5%	406	7.34%	\$ 8,699,586	6.22%
> 5% up to and including 6%	341	6.17%	\$ 11,453,987	8.19%
> 6% up to and including 7%	369	6.67%	\$ 11,397,756	8.15%
> 7% up to and including 8%	513	9.27%	\$ 18,478,788	13.22%
> 8% up to and including 9%	612	11.06%	\$ 17,566,385	12.57%
> 9% up to and including 10%	633	11.44%	\$ 14,728,523	10.54%
> 10% up to and including 11%	439	7.94%	\$ 9,705,456	6.94%
> 11% up to and including 12%	297	5.37%	\$ 5,913,770	4.23%
> 12% up to and including 13%	243	4.39%	\$ 4,675,208	3.34%
> 13%	1,678	30.34%	\$ 37,165,695	26.59%
Total	5,531	100.00%	\$ 139,785,153	100.00%



Contracts by Interest Rate

Interest Rate	Number of Contracts	(%) Number of Contracts	Receivables Outstanding	(%) Receivables Outstanding
0%	0	0.00%	\$ -	0.00%
> 0% up to and including 2%	0	0.00%	\$ -	0.00%
> 2% up to and including 4%	141	2.55%	\$ 2,881,232	2.06%
> 4% up to and including 6%	1,064	19.24%	\$ 30,365,255	21.72%
> 6% up to and including 8%	3,673	66.41%	\$ 89,090,244	63.73%
> 8% up to and including 10%	563	10.18%	\$ 14,290,872	10.22%
> 10% up to and including 12%	69	1.25%	\$ 1,926,821	1.38%
> 12% up to and including 14%	18	0.33%	\$ 1,135,314	0.81%
> 14% up to and including 16%	3	0.05%	\$ 95,415	0.07%
> 16% up to and including 18%	0	0.00%	\$ -	0.00%
> 18% up to and including 20%	0	0.00%	\$ -	0.00%
> 20%	0	0.00%	\$ -	0.00%
Total	5,531	100.00%	\$ 139,785,153	100.00%

