



FP Turbo Series 2016-1 Trust as at 30 November 2018

Portfolio Summary	
Portfolio size	\$ 127,688,524.73
Number of contracts	5,162
Number of obligors	703
Weighted average yield (p.a.)	10.72%
Average contract balance (current)	\$ 24,736.25
Maximum contract balance (current)	\$ 202,541.34
Average contract balance (original)	\$ 46,986.15
Maximum contract balance (original)	\$ 487,571.03
Weighted average total contract term (months)	52.88
Weighted average seasoning (months)	39.08
Weighted average remaining term (months)	13.80
Maximum remaining term (months)	59.05
Weighted average residual (current)	63.17%
Weighted average residual (original)	33.52%
Weighted average balloon percentage	72.42%
Balloon payments contract balance	\$ 125,814,511.49
Balloon payments contract count	5,135
Balloon payments value	\$ 92,471,527.91
Maximum balloon payment	\$ 189,486.36
Maximum contract balance	\$ 202,541.34

Top 10 Obligor

Customer Code	Number of Contracts	(%) Number of Contracts	Receivables Outstanding	(%) Receivables Outstanding
AAN0481	381	7.38%	\$ 8,692,896	6.81%
ARO0130	84	1.63%	\$ 6,306,872	4.94%
ARI0248	323	6.26%	\$ 5,635,959	4.41%
AMU0167	116	2.25%	\$ 5,337,274	4.18%
AAG0025	201	3.89%	\$ 5,311,964	4.16%
ATE0041	252	4.88%	\$ 4,859,461	3.81%
ATS0013	150	2.91%	\$ 3,152,219	2.47%
ASP0122	28	0.54%	\$ 3,140,661	2.46%
ARA0071	41	0.79%	\$ 2,088,366	1.64%
AGI0035	76	1.47%	\$ 2,067,029	1.62%
Total	1,652	32.00%	\$ 46,592,702	36.49%

Top 10 Contract Balance

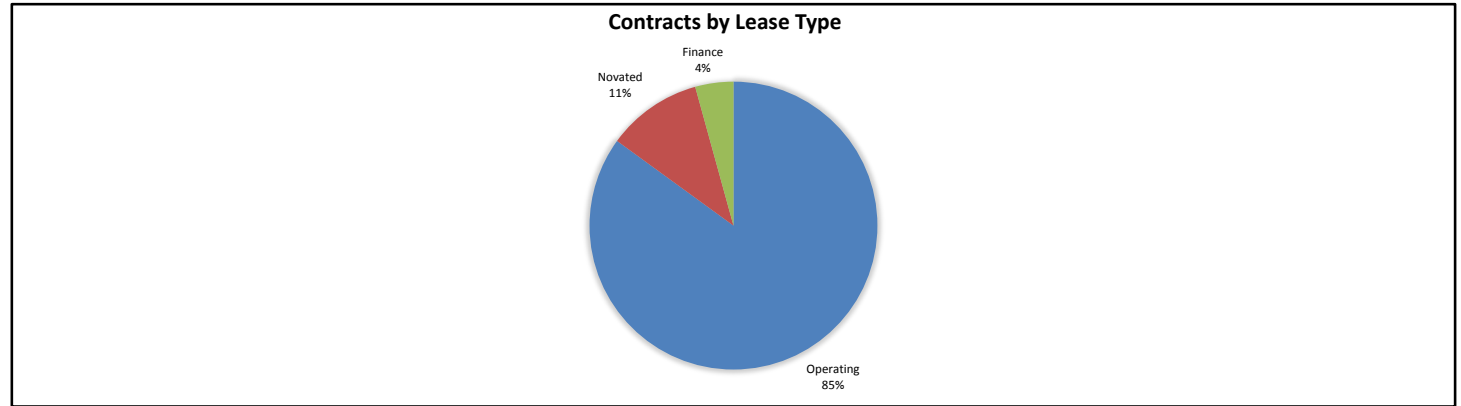
	Receivables Outstanding
1st Decile Upper Limit	\$ 202,541
2nd Decile Upper Limit	\$ 202,373
3rd Decile Upper Limit	\$ 195,173
4th Decile Upper Limit	\$ 194,799
5th Decile Upper Limit	\$ 193,033
6th Decile Upper Limit	\$ 191,301
7th Decile Upper Limit	\$ 188,453
8th Decile Upper Limit	\$ 187,992
9th Decile Upper Limit	\$ 185,374
10th Decile Upper Limit	\$ 184,885

Top 10 Contract Aggregate Balance

	Receivables Outstanding
Aggregate Balance- 1st Decile	\$ 595,578
Aggregate Balance- 2nd Decile	\$ 397,800
Aggregate Balance- 3rd Decile	\$ 206,634
Aggregate Balance- 4th Decile	\$ 206,104
Aggregate Balance- 5th Decile	\$ 206,031
Aggregate Balance- 6th Decile	\$ 205,920
Aggregate Balance- 7th Decile	\$ 205,623
Aggregate Balance- 8th Decile	\$ 204,838
Aggregate Balance- 9th Decile	\$ 203,697
Aggregate Balance- 10th Decile	\$ 203,544
Total	\$ 2,635,768

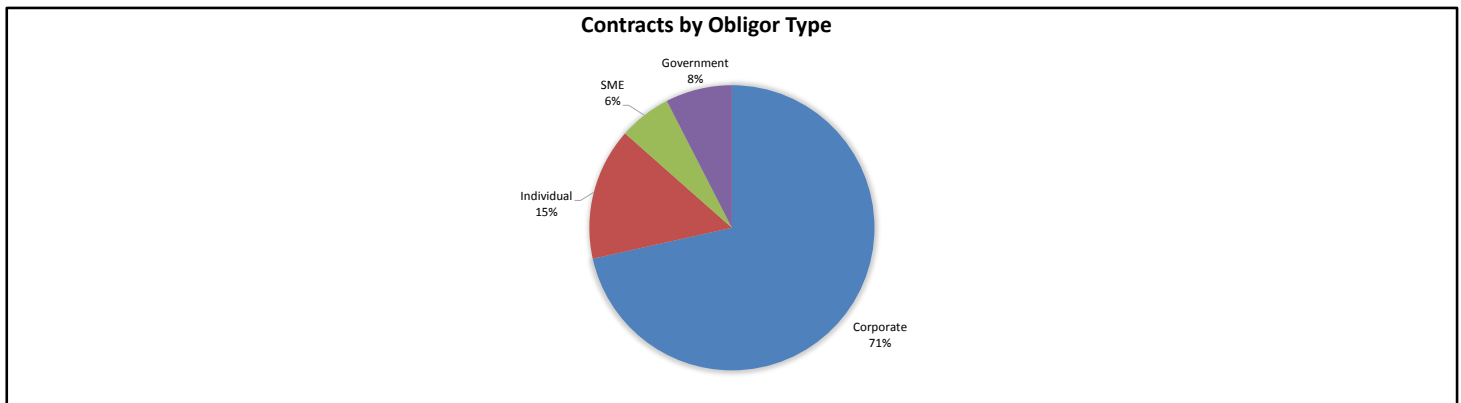
Contracts by Lease Type

Lease Type	Number of Contracts	(%) Number of Contracts	Receivables Outstanding	(%) Receivables Outstanding
Operating	4,396	85.16%	\$ 108,542,184	85.01%
Novated	527	10.21%	\$ 13,673,843	10.71%
Finance	239	4.63%	\$ 5,472,498	4.29%
Total	5,162	100.00%	\$ 127,688,525	100.00%



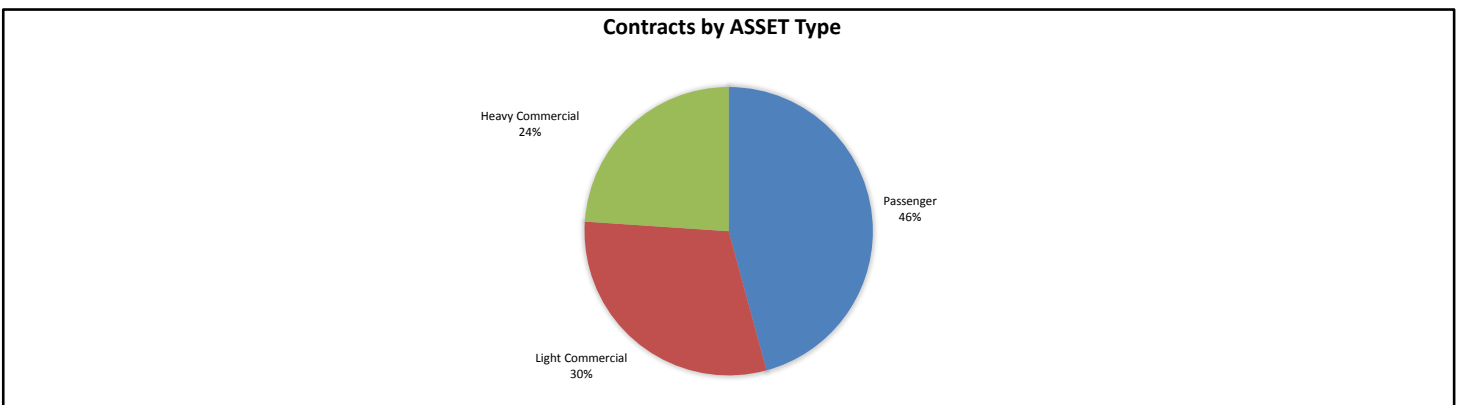
Contracts by Obligor Type

Obligor Type	Number of Contracts	(%) Number of Contracts	Receivables Outstanding	(%) Receivables Outstanding
Corporate	3,794	73.50%	\$ 91,322,339	71.52%
Individual	766	14.84%	\$ 19,146,341	14.99%
SME	410	7.94%	\$ 7,581,062	5.94%
Government	192	3.72%	\$ 9,638,783	7.55%
Total	5,162	100.00%	\$ 127,688,525	100.00%



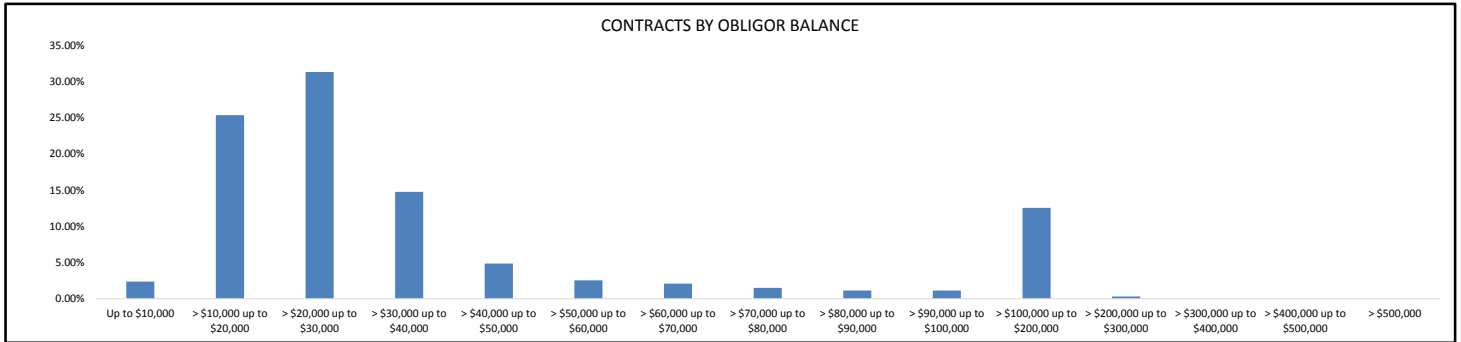
Contracts by Asset Type

Asset Type	Number of Contracts	(%) Number of Contracts	Receivables Outstanding	(%) Receivables Outstanding
Passenger	3,039	58.87%	\$ 58,443,468	45.77%
Light Commercial	1,653	32.02%	\$ 38,680,039	30.29%
Heavy Commercial	470	9.10%	\$ 30,565,018	23.94%
Total	5,162	100.00%	\$ 127,688,525	100.00%



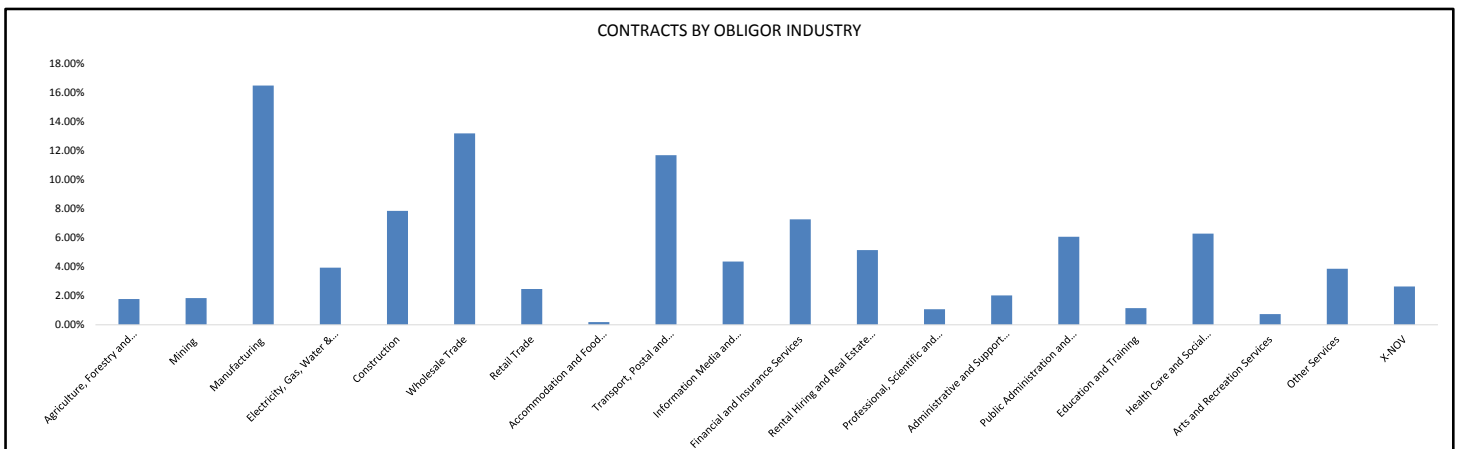
Contracts by Obligor Balance

Obligor Balance	Number of Contracts	(%) Number of Contracts	Receivables Outstanding	(%) Receivables Outstanding
Up to \$10,000	402	7.79%	\$ 3,025,639	2.37%
> \$10,000 up to \$20,000	2,156	41.77%	\$ 32,401,490	25.38%
> \$20,000 up to \$30,000	1,640	31.77%	\$ 40,009,054	31.33%
> \$30,000 up to \$40,000	547	10.60%	\$ 18,848,026	14.76%
> \$40,000 up to \$50,000	141	2.73%	\$ 6,221,563	4.87%
> \$50,000 up to \$60,000	60	1.16%	\$ 3,259,126	2.55%
> \$60,000 up to \$70,000	41	0.79%	\$ 2,668,861	2.09%
> \$70,000 up to \$80,000	26	0.50%	\$ 1,920,986	1.50%
> \$80,000 up to \$90,000	17	0.33%	\$ 1,455,759	1.14%
> \$90,000 up to \$100,000	15	0.29%	\$ 1,437,686	1.13%
> \$100,000 up to \$200,000	115	2.23%	\$ 16,035,420	12.56%
> \$200,000 up to \$300,000	2	0.04%	\$ 404,914	0.32%
> \$300,000 up to \$400,000	0	0.00%	\$ -	0.00%
> \$400,000 up to \$500,000	0	0.00%	\$ -	0.00%
> \$500,000	0	0.00%	\$ -	0.00%
Total	5,162	100.00%	\$ 127,688,525	100.00%



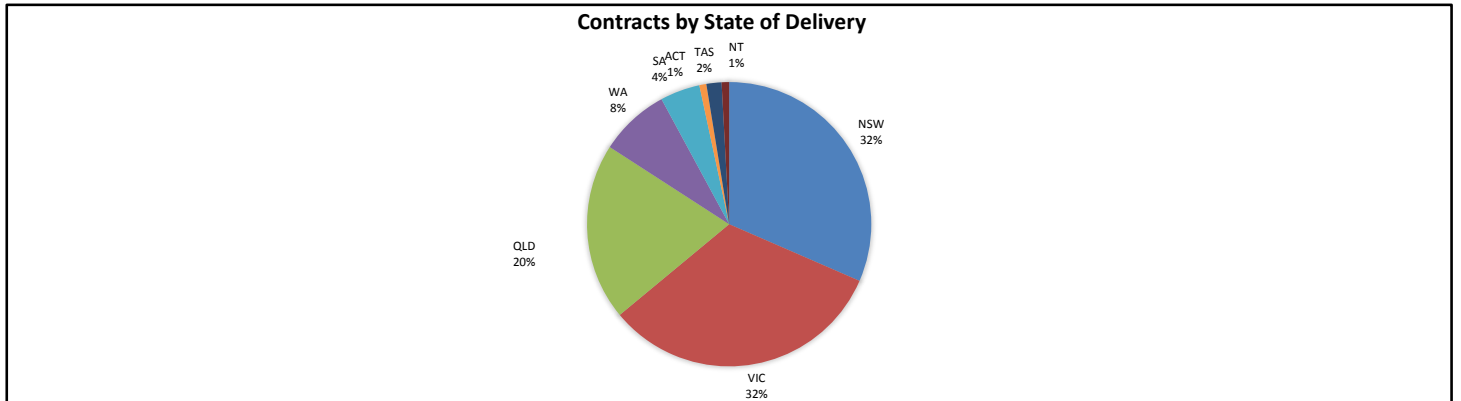
Contracts by Obligor Industry

Obligor Industry	Number of Contracts	(%) Number of Contracts	Receivables Outstanding	(%) Receivables Outstanding
ANZSIC Industry Division: Agriculture, Forestry and Fishing	94	1.82%	\$ 2,265,360	1.77%
ANZSIC Industry Division: Mining	83	1.61%	\$ 2,350,571	1.84%
ANZSIC Industry Division: Manufacturing	786	15.23%	\$ 21,046,503	16.48%
ANZSIC Industry Division: Electricity, Gas, Water and Waste Services	239	4.63%	\$ 5,031,362	3.94%
ANZSIC Industry Division: Construction	429	8.31%	\$ 10,019,693	7.85%
ANZSIC Industry Division: Wholesale Trade	717	13.89%	\$ 16,842,522	13.19%
ANZSIC Industry Division: Retail Trade	154	2.98%	\$ 3,151,208	2.47%
ANZSIC Industry Division: Accommodation and Food Services	12	0.23%	\$ 240,334	0.19%
ANZSIC Industry Division: Transport, Postal and Warehousing	289	5.60%	\$ 14,915,559	11.68%
ANZSIC Industry Division: Information Media and Telecommunications	278	5.39%	\$ 5,568,960	4.36%
ANZSIC Industry Division: Financial and Insurance Services	413	8.00%	\$ 9,274,261	7.26%
ANZSIC Industry Division: Rental, Hiring and Real Estate Services	368	7.13%	\$ 6,572,188	5.15%
ANZSIC Industry Division: Professional, Scientific and Technical Services	59	1.14%	\$ 1,371,644	1.07%
ANZSIC Industry Division: Administrative and Support Services	127	2.46%	\$ 2,583,736	2.02%
ANZSIC Industry Division: Public Administration and Safety	164	3.18%	\$ 7,740,978	6.06%
ANZSIC Industry Division: Education and Training	63	1.22%	\$ 1,463,182	1.15%
ANZSIC Industry Division: Health Care and Social Assistance	470	9.10%	\$ 8,014,580	6.28%
ANZSIC Industry Division: Arts and Recreational Services	57	1.10%	\$ 941,404	0.74%
Other Services	218	4.22%	\$ 4,928,847	3.86%
X-NOV	142	2.75%	\$ 3,365,631	2.64%
Total	5,162	100.00%	\$ 127,688,525	100.00%



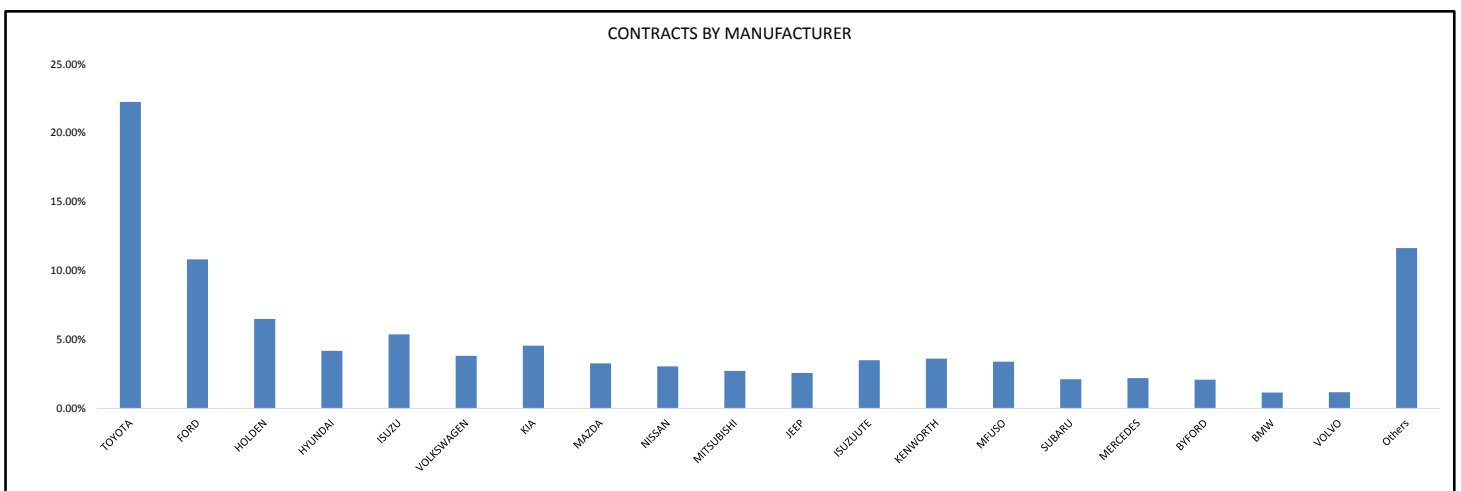
Contracts by State of Delivery

State of Delivery	Number of Contracts	(%) Number of Contracts	Receivables Outstanding	(%) Receivables Outstanding
NSW	1,498	29.02%	\$ 40,255,514	31.53%
VIC	1,678	32.51%	\$ 41,445,251	32.46%
QLD	1,066	20.65%	\$ 25,723,274	20.15%
WA	474	9.18%	\$ 10,184,169	7.98%
SA	257	4.98%	\$ 5,777,757	4.52%
ACT	44	0.85%	\$ 1,018,381	0.80%
TAS	100	1.94%	\$ 2,196,981	1.72%
NT	45	0.87%	\$ 1,087,199	0.85%
Total	5,162	100.00%	\$ 127,688,525	100.00%



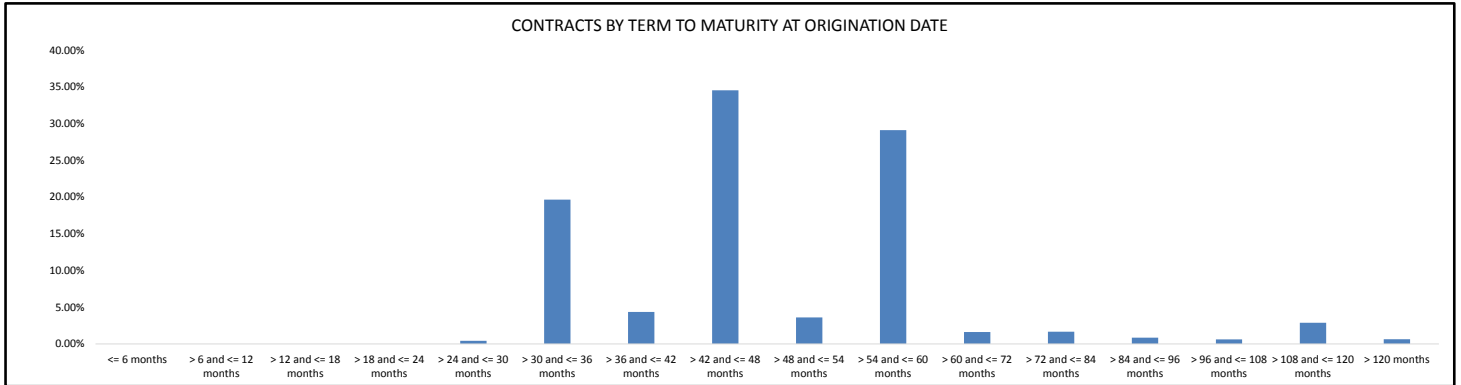
Contracts by Manufacturer

Manufacturer	Number of Contracts	(%) Number of Contracts	Receivables Outstanding	(%) Receivables Outstanding
TOYOTA	1,267	24.54%	\$ 28,423,331	22.26%
FORD	655	12.69%	\$ 13,827,752	10.83%
HOLDEN	469	9.09%	\$ 8,298,860	6.50%
HYUNDAI	334	6.47%	\$ 5,333,079	4.18%
ISUZU	121	2.34%	\$ 6,865,549	5.38%
VOLKSWAGEN	251	4.86%	\$ 4,875,039	3.82%
KIA	336	6.51%	\$ 5,818,156	4.56%
MAZDA	217	4.20%	\$ 4,170,024	3.27%
NISSAN	219	4.24%	\$ 3,896,519	3.05%
MITSUBISHI	178	3.45%	\$ 3,474,494	2.72%
JEEP	139	2.69%	\$ 3,283,392	2.57%
ISUZUUTE	182	3.53%	\$ 4,469,623	3.50%
KENWORTH	29	0.56%	\$ 4,604,947	3.61%
MFUSO	87	1.69%	\$ 4,328,144	3.39%
SUBARU	132	2.56%	\$ 2,711,456	2.12%
MERCEDES	70	1.36%	\$ 2,807,661	2.20%
BYFORD	21	0.41%	\$ 2,666,500	2.09%
BMW	39	0.76%	\$ 1,474,247	1.15%
VOLVO	21	0.41%	\$ 1,493,458	1.17%
Others	395	7.65%	\$ 14,866,294	11.64%
Total	5,162	100.00%	\$ 127,688,525	100.00%



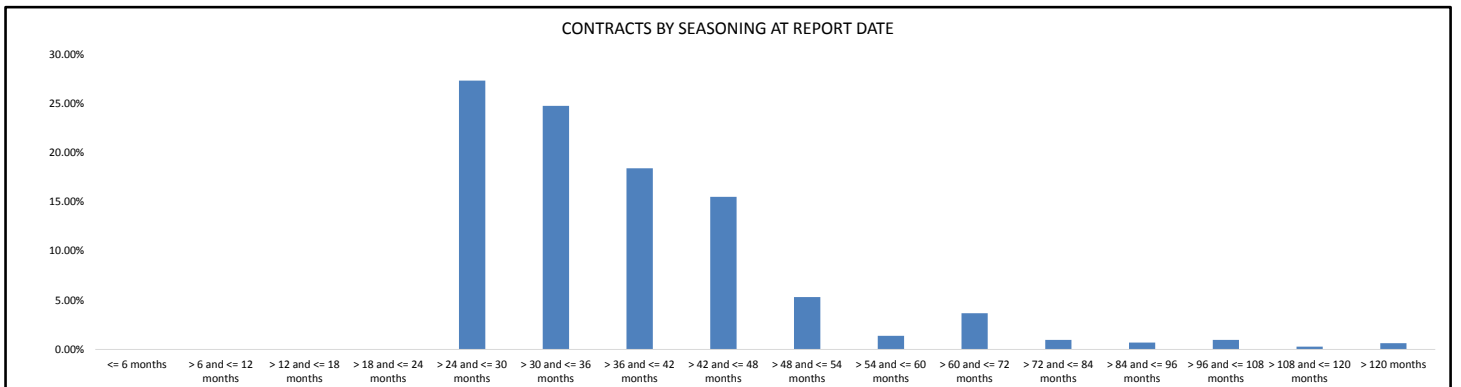
Contracts by Term to Maturity at Origination Date

Term to Maturity at Origination Date	Number of Contracts	(%) Number of Contracts	Receivables Outstanding	(%) Receivables Outstanding
<= 6 months	0	0.00%	\$ -	0.00%
> 6 and <= 12 months	0	0.00%	\$ -	0.00%
> 12 and <= 18 months	0	0.00%	\$ -	0.00%
> 18 and <= 24 months	0	0.00%	\$ -	0.00%
> 24 and <= 30 months	34	0.66%	\$ 533,160	0.42%
> 30 and <= 36 months	1,226	23.75%	\$ 25,100,069	19.66%
> 36 and <= 42 months	309	5.99%	\$ 5,558,865	4.35%
> 42 and <= 48 months	1,967	38.11%	\$ 44,134,448	34.56%
> 48 and <= 54 months	308	5.97%	\$ 4,601,703	3.60%
> 54 and <= 60 months	1,094	21.19%	\$ 37,193,444	29.13%
> 60 and <= 72 months	71	1.38%	\$ 2,072,241	1.62%
> 72 and <= 84 months	49	0.95%	\$ 2,139,788	1.68%
> 84 and <= 96 months	21	0.41%	\$ 1,081,802	0.85%
> 96 and <= 108 months	19	0.37%	\$ 778,820	0.61%
> 108 and <= 120 months	41	0.79%	\$ 3,683,179	2.88%
> 120 months	23	0.45%	\$ 811,006	0.64%
Total	5,162	100.00%	\$ 127,688,525	100.00%



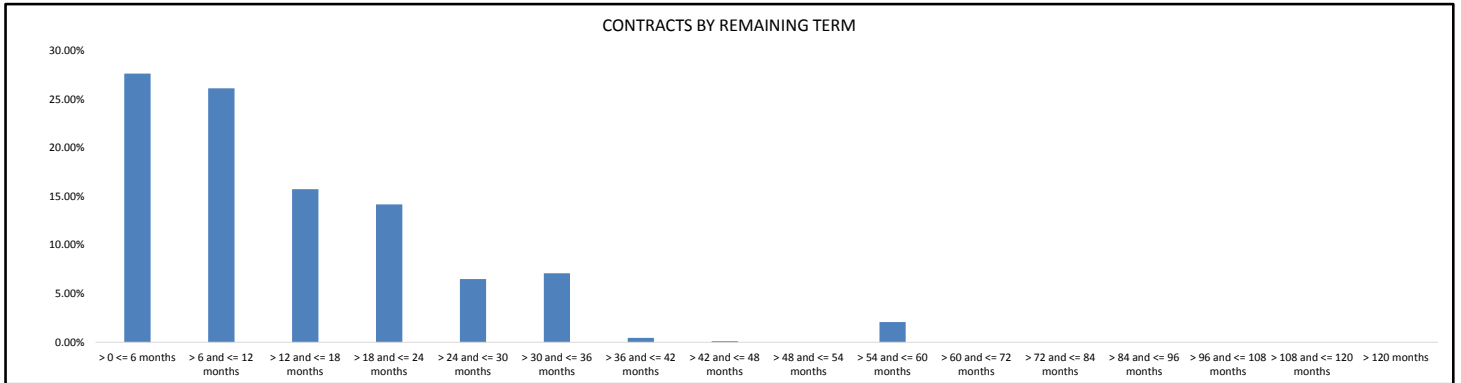
Contracts by Seasoning at Report Date

Seasoning at Report Date	Number of Contracts	(%) Number of Contracts	Receivables Outstanding	(%) Receivables Outstanding
<= 6 months	0	0.00%	\$ -	0.00%
> 6 and <= 12 months	0	0.00%	\$ -	0.00%
> 12 and <= 18 months	0	0.00%	\$ -	0.00%
> 18 and <= 24 months	0	0.00%	\$ -	0.00%
> 24 and <= 30 months	1,226	23.75%	\$ 34,904,413	27.34%
> 30 and <= 36 months	1,331	25.78%	\$ 31,629,346	24.77%
> 36 and <= 42 months	1,074	20.81%	\$ 23,508,992	18.41%
> 42 and <= 48 months	875	16.95%	\$ 19,807,832	15.51%
> 48 and <= 54 months	364	7.05%	\$ 6,806,023	5.33%
> 54 and <= 60 months	96	1.86%	\$ 1,773,024	1.39%
> 60 and <= 72 months	80	1.55%	\$ 4,699,852	3.68%
> 72 and <= 84 months	37	0.72%	\$ 1,244,541	0.97%
> 84 and <= 96 months	21	0.41%	\$ 898,068	0.70%
> 96 and <= 108 months	25	0.48%	\$ 1,245,359	0.98%
> 108 and <= 120 months	10	0.19%	\$ 360,069	0.28%
> 120 months	23	0.45%	\$ 811,006	0.64%
Total	5,162	100.00%	\$ 127,688,525	100.00%



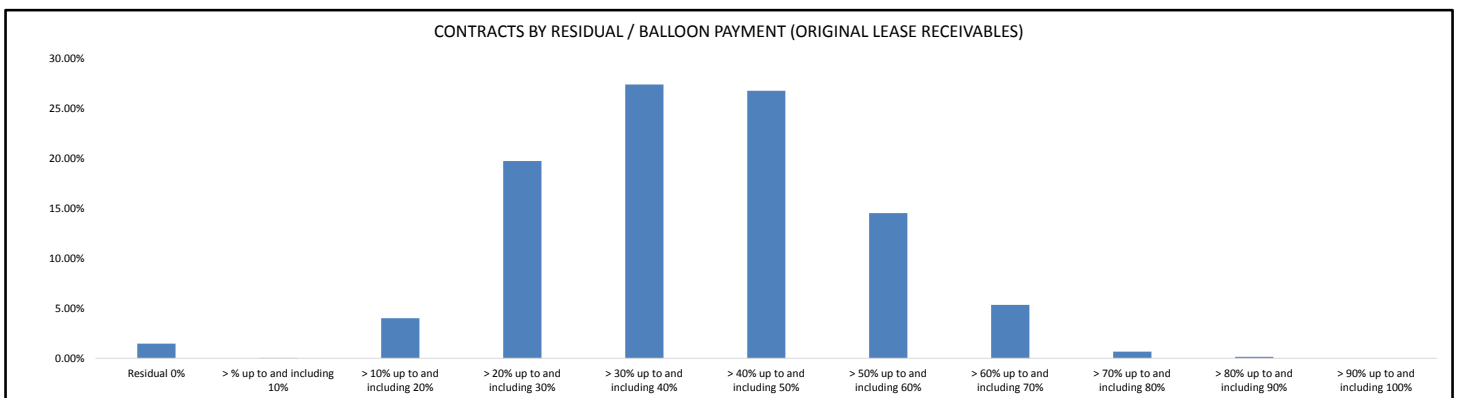
Contracts by Remaining Term

Remaining Term	Number of Contracts	(%) Number of Contracts	Receivables Outstanding	(%) Receivables Outstanding
> 0 <= 6 months	1,957	37.91%	\$ 35,301,963	27.65%
> 6 and <= 12 months	1,479	28.65%	\$ 33,370,302	26.13%
> 12 and <= 18 months	717	13.89%	\$ 20,115,643	15.75%
> 18 and <= 24 months	580	11.24%	\$ 18,123,068	14.19%
> 24 and <= 30 months	214	4.15%	\$ 8,306,105	6.50%
> 30 and <= 36 months	190	3.68%	\$ 9,076,869	7.11%
> 36 and <= 42 months	3	0.06%	\$ 583,005	0.46%
> 42 and <= 48 months	1	0.02%	\$ 145,069	0.11%
> 48 and <= 54 months	0	0.00%	\$ -	0.00%
> 54 and <= 60 months	21	0.41%	\$ 2,666,500	2.09%
> 60 and <= 72 months	0	0.00%	\$ -	0.00%
> 72 and <= 84 months	0	0.00%	\$ -	0.00%
> 84 and <= 96 months	0	0.00%	\$ -	0.00%
> 96 and <= 108 months	0	0.00%	\$ -	0.00%
> 108 and <= 120 months	0	0.00%	\$ -	0.00%
> 120 months	0	0.00%	\$ -	0.00%
Total	5,162	100.00%	\$ 127,688,525	100.00%



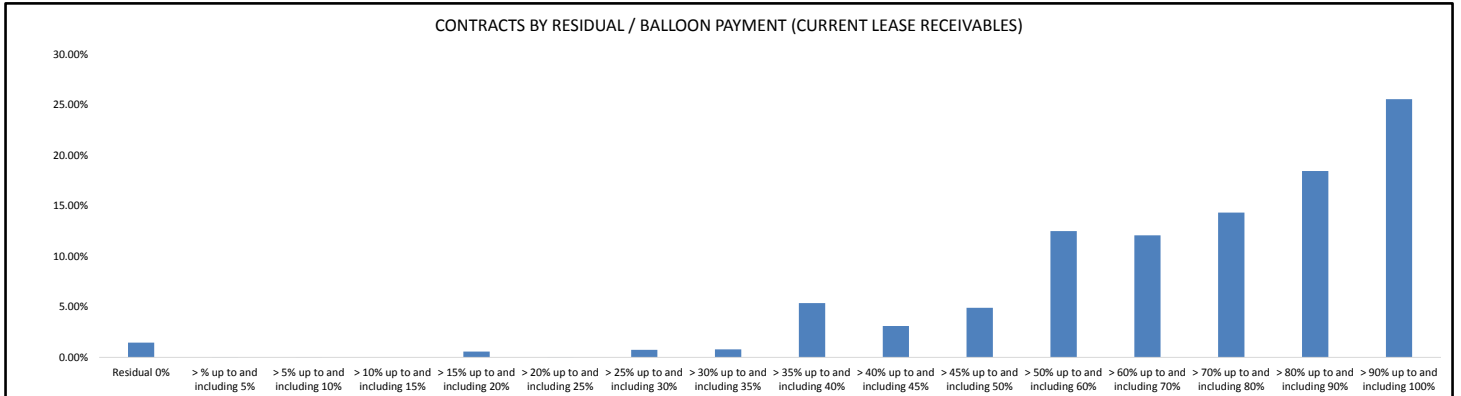
Contracts by Residual/Balloon Payment (Original Lease Receivables)

Residual/Balloon Payment (Original Lease Receivables)	Number of Contracts	(%) Number of Contracts	Receivables Outstanding	(%) Receivables Outstanding
Residual 0%	16	0.31%	\$ 1,873,375	1.47%
> % up to and including 10%	7	0.14%	\$ 53,738	0.04%
> 10% up to and including 20%	176	3.41%	\$ 5,121,653	4.01%
> 20% up to and including 30%	811	15.71%	\$ 25,185,972	19.72%
> 30% up to and including 40%	1,386	26.85%	\$ 34,945,046	27.37%
> 40% up to and including 50%	1,552	30.07%	\$ 34,139,143	26.74%
> 50% up to and including 60%	885	17.14%	\$ 18,519,841	14.50%
> 60% up to and including 70%	287	5.56%	\$ 6,817,682	5.34%
> 70% up to and including 80%	34	0.66%	\$ 840,699	0.66%
> 80% up to and including 90%	8	0.15%	\$ 191,376	0.15%
> 90% up to and including 100%	0	0.00%	\$ -	0.00%
Total	5,162	100.00%	\$ 127,688,525	100.00%



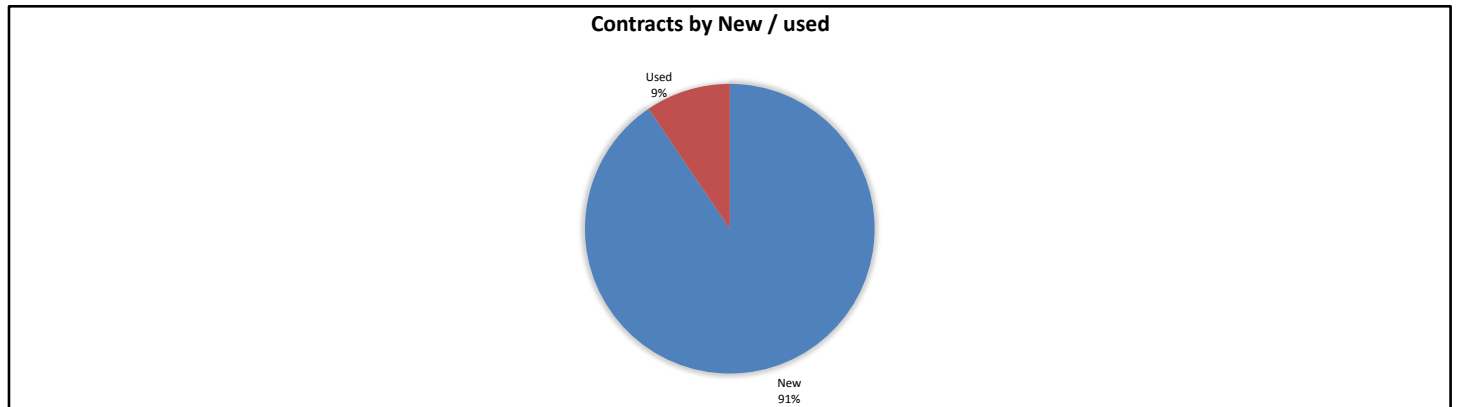
Contracts by Residual/Balloon Payment (Current Lease Receivables)

Residual/Balloon Payment (Current Lease Receivables)	Number of Contracts	(%) Number of Contracts	Receivables Outstanding	(%) Receivables Outstanding
Residual 0%	27	0.52%	\$ 1,874,013	1.47%
> % up to and including 5%	4	0.08%	\$ 31,532	0.02%
> 5% up to and including 10%	1	0.02%	\$ 4,188	0.00%
> 10% up to and including 15%	0	0.00%	\$ -	0.00%
> 15% up to and including 20%	6	0.12%	\$ 737,732	0.58%
> 20% up to and including 25%	2	0.04%	\$ 28,159	0.02%
> 25% up to and including 30%	23	0.45%	\$ 954,007	0.75%
> 30% up to and including 35%	23	0.45%	\$ 1,009,310	0.79%
> 35% up to and including 40%	149	2.89%	\$ 6,875,072	5.38%
> 40% up to and including 45%	116	2.25%	\$ 3,962,762	3.10%
> 45% up to and including 50%	214	4.15%	\$ 6,268,954	4.91%
> 50% up to and including 60%	486	9.41%	\$ 15,970,701	12.51%
> 60% up to and including 70%	578	11.20%	\$ 15,434,239	12.09%
> 70% up to and including 80%	740	14.34%	\$ 18,319,361	14.35%
> 80% up to and including 90%	1,127	21.83%	\$ 23,561,512	18.45%
> 90% up to and including 100%	1,666	32.27%	\$ 32,656,982	25.58%
Total	5,162	100.00%	\$ 127,688,525	100.00%



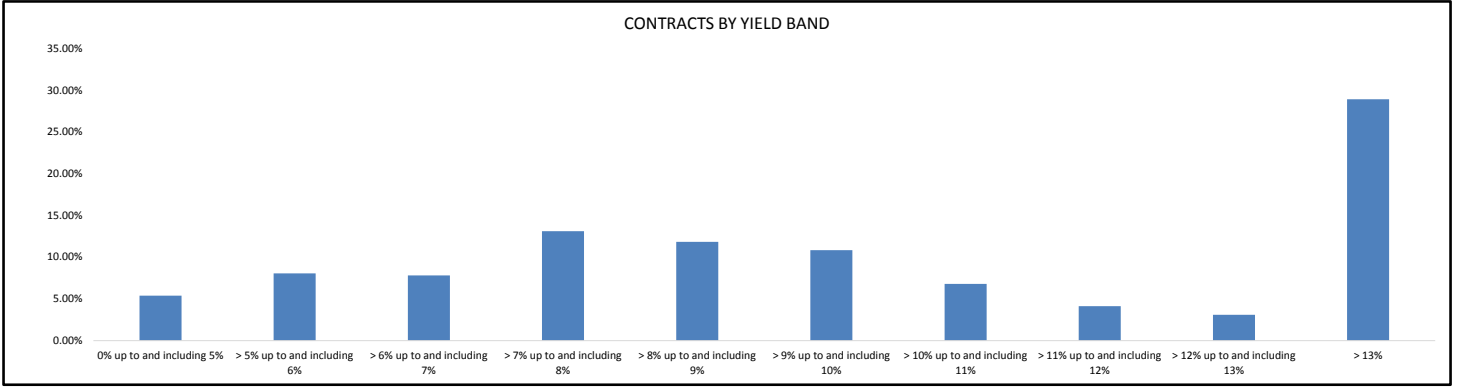
Contracts by New / Used

New / Used	Number of Contracts	(%) Number of Contracts	Receivables Outstanding	(%) Receivables Outstanding
New	4,808	93.14%	\$ 115,593,464	90.53%
Used	354	6.86%	\$ 12,095,060	9.47%
Total	5,162	100.00%	\$ 127,688,525	100.00%



Contracts by Yield Band

Yield Band	Number of Contracts	(%) Number of Contracts	Receivables Outstanding	(%) Receivables Outstanding
0% up to and including 5%	328	6.35%	\$ 6,890,780	5.40%
> 5% up to and including 6%	308	5.97%	\$ 10,286,367	8.06%
> 6% up to and including 7%	317	6.14%	\$ 9,966,489	7.81%
> 7% up to and including 8%	471	9.12%	\$ 16,746,639	13.12%
> 8% up to and including 9%	540	10.46%	\$ 15,117,030	11.84%
> 9% up to and including 10%	603	11.68%	\$ 13,847,798	10.84%
> 10% up to and including 11%	376	7.28%	\$ 8,685,081	6.80%
> 11% up to and including 12%	274	5.31%	\$ 5,274,786	4.13%
> 12% up to and including 13%	197	3.82%	\$ 3,942,979	3.09%
> 13%	1,748	33.86%	\$ 36,930,575	28.92%
Total	5,162	100.00%	\$ 127,688,525	100.00%



Contracts by Interest Rate

Interest Rate	Number of Contracts	(%) Number of Contracts	Receivables Outstanding	(%) Receivables Outstanding
0%	0	0.00%	\$ -	0.00%
> 0% up to and including 2%	0	0.00%	\$ -	0.00%
> 2% up to and including 4%	129	2.50%	\$ 2,540,747	1.99%
> 4% up to and including 6%	1,006	19.49%	\$ 28,038,753	21.96%
> 6% up to and including 8%	3,384	65.56%	\$ 80,878,529	63.34%
> 8% up to and including 10%	560	10.85%	\$ 13,480,689	10.56%
> 10% up to and including 12%	63	1.22%	\$ 1,635,635	1.28%
> 12% up to and including 14%	17	0.33%	\$ 1,022,531	0.80%
> 14% up to and including 16%	3	0.06%	\$ 91,640	0.07%
> 16% up to and including 18%	0	0.00%	\$ -	0.00%
> 18% up to and including 20%	0	0.00%	\$ -	0.00%
> 20%	0	0.00%	\$ -	0.00%
Total	5,162	100.00%	\$ 127,688,525	100.00%

