



FP Turbo Series 2016-1 Trust as at 31 January 2019

Portfolio Summary	
Portfolio size	\$ 115,076,458.42
Number of contracts	4,723
Number of obligors	667
Weighted average yield (p.a.)	10.85%
Average contract balance (current)	\$ 24,365.12
Maximum contract balance (current)	\$ 200,732.82
Average contract balance (original)	\$ 47,869.70
Maximum contract balance (original)	\$ 487,571.03
Weighted average total contract term (months)	53.62
Weighted average seasoning (months)	40.82
Weighted average remaining term (months)	12.81
Maximum remaining term (months)	57.01
Weighted average residual (current)	64.54%
Weighted average residual (original)	33.31%
Weighted average balloon percentage	73.99%
Balloon payments contract balance	\$ 113,260,666.68
Balloon payments contract count	4,691
Balloon payments value	\$ 85,141,245.04
Maximum balloon payment	\$ 189,486.36
Maximum contract balance	\$ 200,732.82

Top 10 Obligor

Customer Code	Number of Contracts	(%) Number of Contracts	Receivables Outstanding	(%) Receivables Outstanding
AAN0481	337	7.14%	\$ 7,427,227	6.45%
ARO0130	81	1.72%	\$ 5,950,308	5.17%
ARI0248	320	6.78%	\$ 5,374,847	4.67%
AMU0167	116	2.46%	\$ 5,138,315	4.47%
AAG0025	166	3.51%	\$ 4,437,920	3.86%
ATE0041	224	4.74%	\$ 4,287,193	3.73%
ATS0013	150	3.18%	\$ 3,028,327	2.63%
ASP0122	28	0.59%	\$ 2,977,903	2.59%
AGI0035	75	1.59%	\$ 1,955,530	1.70%
ARA0071	38	0.80%	\$ 1,924,373	1.67%
Total	1,535	32.50%	\$ 42,501,942	36.93%

Top 10 Contract Balance

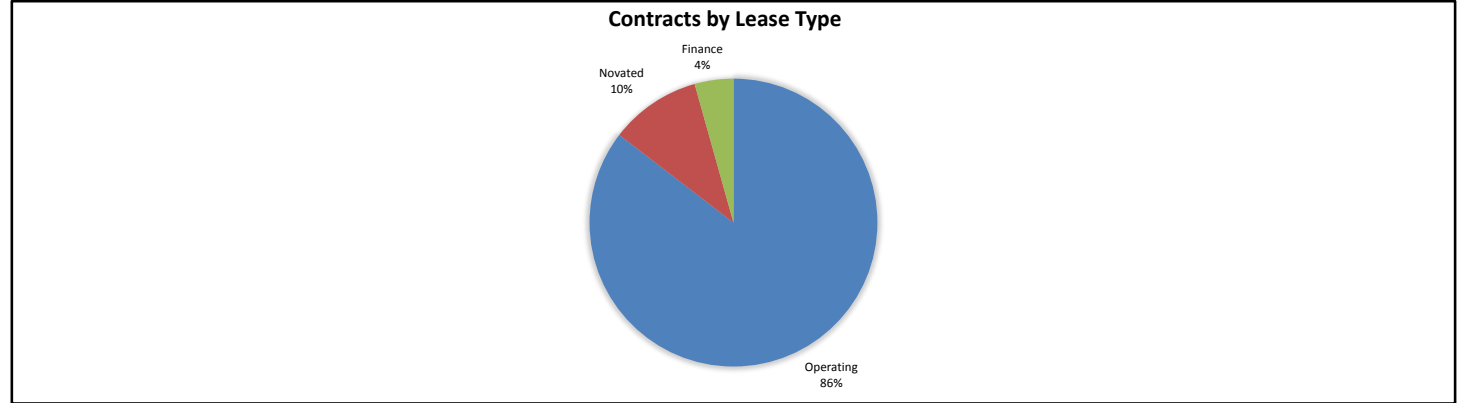
	Receivables Outstanding
1st Decile Upper Limit	\$ 200,733
2nd Decile Upper Limit	\$ 200,573
3rd Decile Upper Limit	\$ 189,156
4th Decile Upper Limit	\$ 188,800
5th Decile Upper Limit	\$ 187,115
6th Decile Upper Limit	\$ 184,439
7th Decile Upper Limit	\$ 180,793
8th Decile Upper Limit	\$ 180,113
9th Decile Upper Limit	\$ 178,529
10th Decile Upper Limit	\$ 178,521

Top 10 Contract Aggregate Balance

	Receivables Outstanding
Aggregate Balance- 1st Decile	\$ 200,733
Aggregate Balance- 2nd Decile	\$ 200,573
Aggregate Balance- 3rd Decile	\$ 189,156
Aggregate Balance- 4th Decile	\$ 188,800
Aggregate Balance- 5th Decile	\$ 187,115
Aggregate Balance- 6th Decile	\$ 184,439
Aggregate Balance- 7th Decile	\$ 180,793
Aggregate Balance- 8th Decile	\$ 180,113
Aggregate Balance- 9th Decile	\$ 178,529
Aggregate Balance- 10th Decile	\$ 178,521
Total	\$ 1,868,772

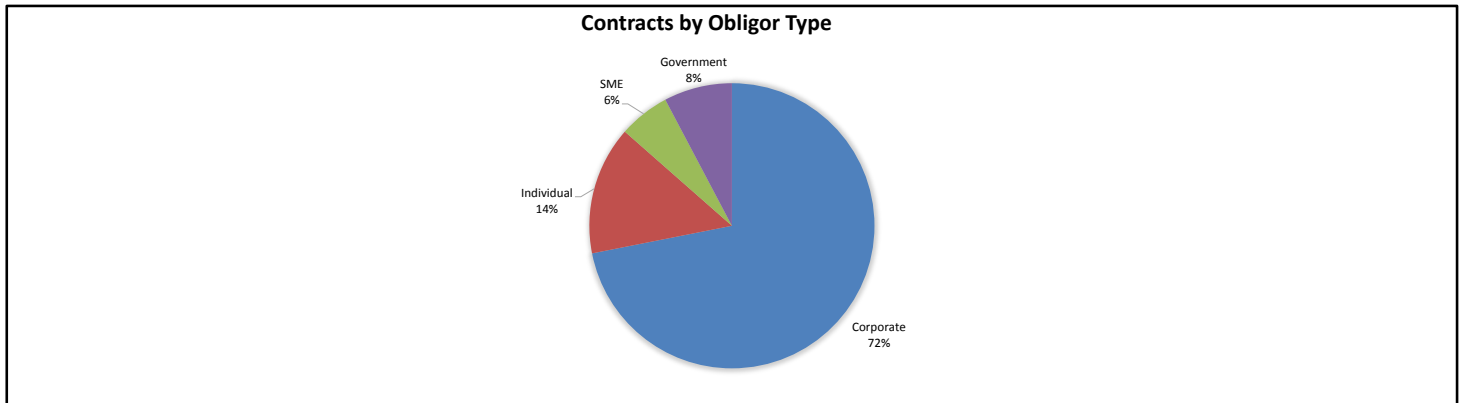
Contracts by Lease Type

Lease Type	Number of Contracts	(%) Number of Contracts	Receivables Outstanding	(%) Receivables Outstanding
Operating	4,014	84.99%	\$ 98,298,890	85.42%
Novated	479	10.14%	\$ 11,766,069	10.22%
Finance	230	4.87%	\$ 5,011,499	4.35%
Total	4,723	100.00%	\$ 115,076,458	100.00%



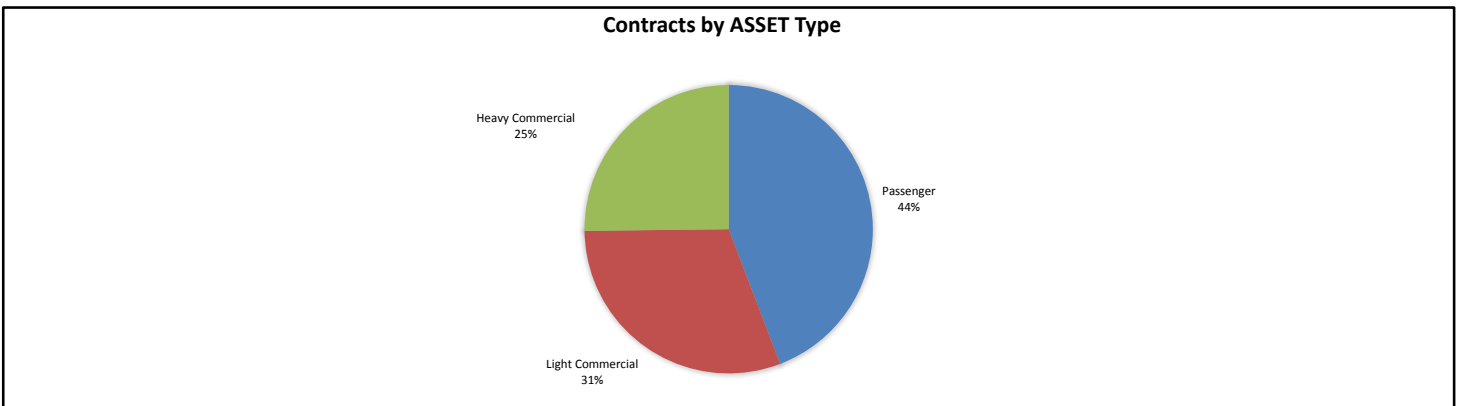
Contracts by Obligor Type

Obligor Type	Number of Contracts	(%) Number of Contracts	Receivables Outstanding	(%) Receivables Outstanding
Corporate	3,480	73.68%	\$ 82,736,926	71.90%
Individual	709	15.01%	\$ 16,777,569	14.58%
SME	362	7.66%	\$ 6,660,611	5.79%
Government	172	3.64%	\$ 8,901,353	7.74%
Total	4,723	100.00%	\$ 115,076,458	100.00%



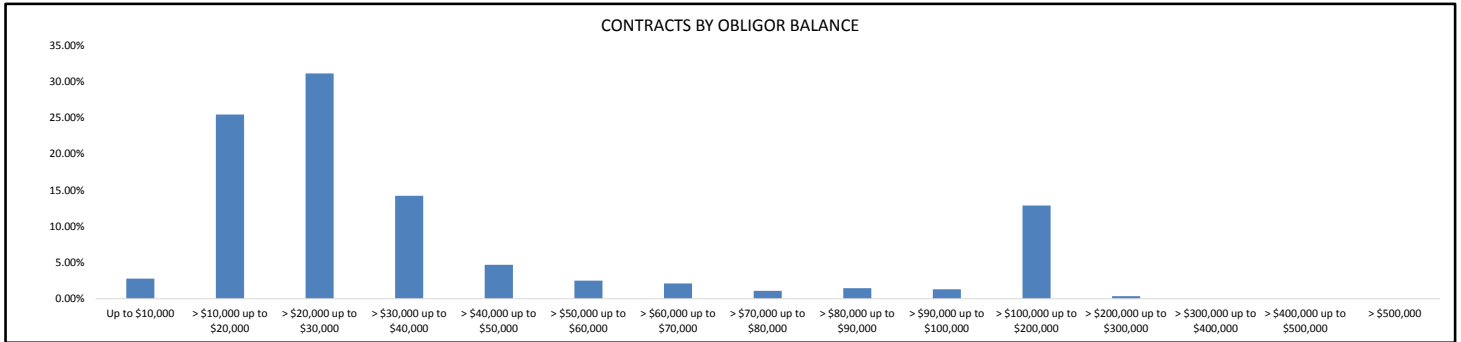
Contracts by Asset Type

Asset Type	Number of Contracts	(%) Number of Contracts	Receivables Outstanding	(%) Receivables Outstanding
Passenger	2,721	57.61%	\$ 50,849,660	44.19%
Light Commercial	1,544	32.69%	\$ 35,245,039	30.63%
Heavy Commercial	458	9.70%	\$ 28,981,760	25.18%
Total	4,723	100.00%	\$ 115,076,458	100.00%



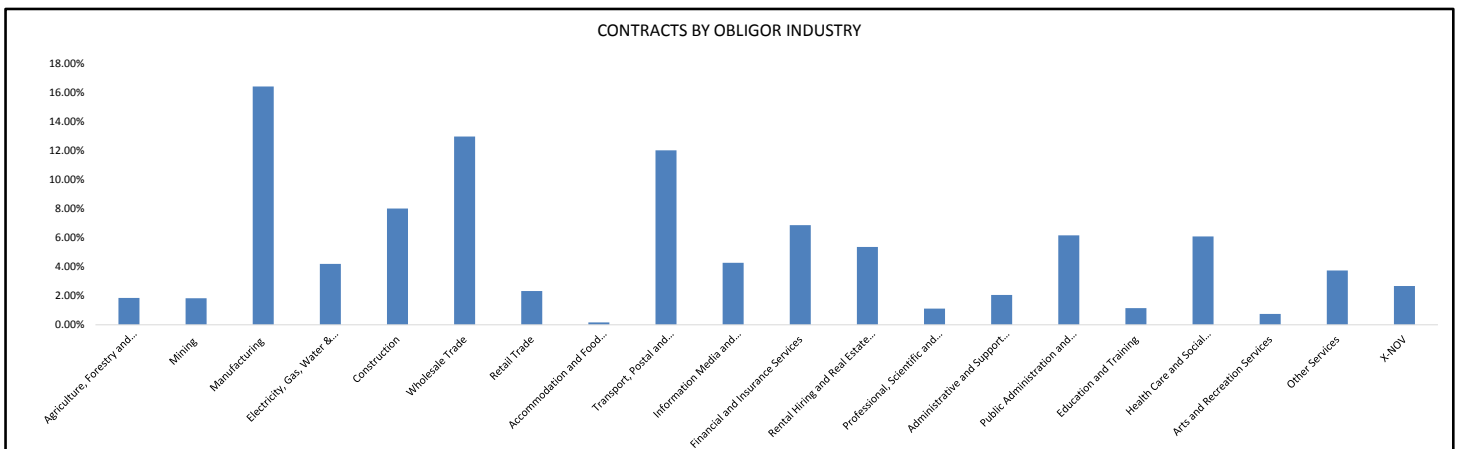
Contracts by Obligor Balance

Obligor Balance	Number of Contracts	(%) Number of Contracts	Receivables Outstanding	(%) Receivables Outstanding
Up to \$10,000	447	9.46%	\$ 3,203,600	2.78%
> \$10,000 up to \$20,000	1,945	41.18%	\$ 29,297,414	25.46%
> \$20,000 up to \$30,000	1,477	31.27%	\$ 35,828,780	31.13%
> \$30,000 up to \$40,000	478	10.12%	\$ 16,374,630	14.23%
> \$40,000 up to \$50,000	122	2.58%	\$ 5,397,605	4.69%
> \$50,000 up to \$60,000	53	1.12%	\$ 2,883,269	2.51%
> \$60,000 up to \$70,000	37	0.78%	\$ 2,421,553	2.10%
> \$70,000 up to \$80,000	17	0.36%	\$ 1,253,375	1.09%
> \$80,000 up to \$90,000	20	0.42%	\$ 1,674,586	1.46%
> \$90,000 up to \$100,000	16	0.34%	\$ 1,509,676	1.31%
> \$100,000 up to \$200,000	109	2.31%	\$ 14,830,665	12.89%
> \$200,000 up to \$300,000	2	0.04%	\$ 401,305	0.35%
> \$300,000 up to \$400,000	0	0.00%	\$ -	0.00%
> \$400,000 up to \$500,000	0	0.00%	\$ -	0.00%
> \$500,000	0	0.00%	\$ -	0.00%
Total	4,723	100.00%	\$ 115,076,458	100.00%



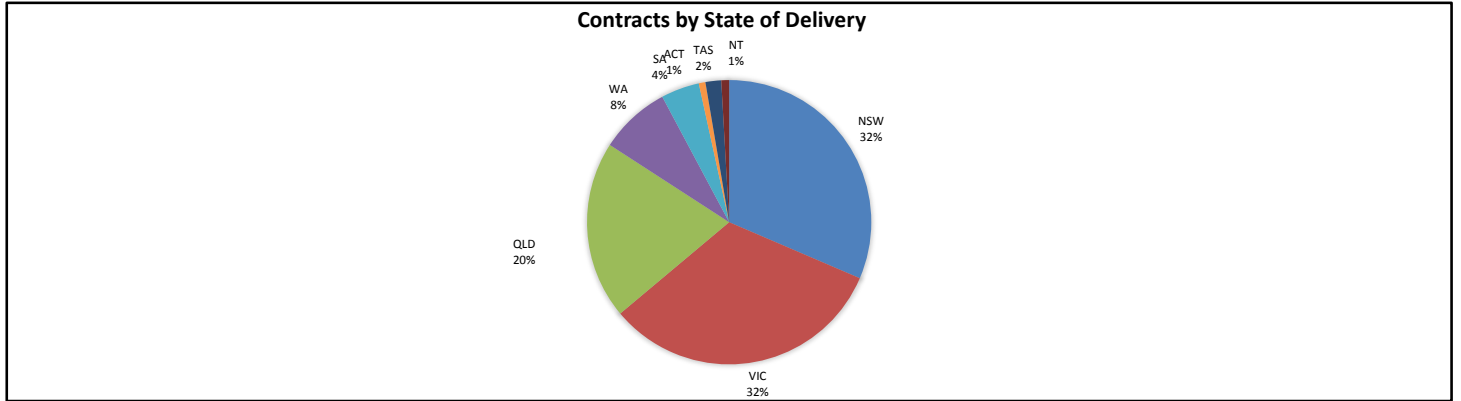
Contracts by Obligor Industry

Obligor Industry	Number of Contracts	(%) Number of Contracts	Receivables Outstanding	(%) Receivables Outstanding
ANZSIC Industry Division: Agriculture, Forestry and Fishing	91	1.93%	\$ 2,125,694	1.85%
ANZSIC Industry Division: Mining	76	1.61%	\$ 2,104,034	1.83%
ANZSIC Industry Division: Manufacturing	709	15.01%	\$ 18,889,814	16.42%
ANZSIC Industry Division: Electricity, Gas, Water and Waste Services	239	5.06%	\$ 4,829,678	4.20%
ANZSIC Industry Division: Construction	406	8.60%	\$ 9,213,189	8.01%
ANZSIC Industry Division: Wholesale Trade	644	13.64%	\$ 14,923,445	12.97%
ANZSIC Industry Division: Retail Trade	135	2.86%	\$ 2,680,289	2.33%
ANZSIC Industry Division: Accommodation and Food Services	10	0.21%	\$ 187,840	0.16%
ANZSIC Industry Division: Transport, Postal and Warehousing	270	5.72%	\$ 13,828,696	12.02%
ANZSIC Industry Division: Information Media and Telecommunications	246	5.21%	\$ 4,917,512	4.27%
ANZSIC Industry Division: Financial and Insurance Services	358	7.58%	\$ 7,898,691	6.86%
ANZSIC Industry Division: Rental, Hiring and Real Estate Services	357	7.56%	\$ 6,167,669	5.36%
ANZSIC Industry Division: Professional, Scientific and Technical Services	58	1.23%	\$ 1,281,323	1.11%
ANZSIC Industry Division: Administrative and Support Services	120	2.54%	\$ 2,365,864	2.06%
ANZSIC Industry Division: Public Administration and Safety	143	3.03%	\$ 7,088,987	6.16%
ANZSIC Industry Division: Education and Training	58	1.23%	\$ 1,320,886	1.15%
ANZSIC Industry Division: Health Care and Social Assistance	415	8.79%	\$ 7,007,820	6.09%
ANZSIC Industry Division: Arts and Recreational Services	55	1.16%	\$ 859,495	0.75%
Other Services	195	4.13%	\$ 4,308,961	3.74%
X-NOV	138	2.92%	\$ 3,076,571	2.67%
Total	4,723	100.00%	\$ 115,076,458	100.00%



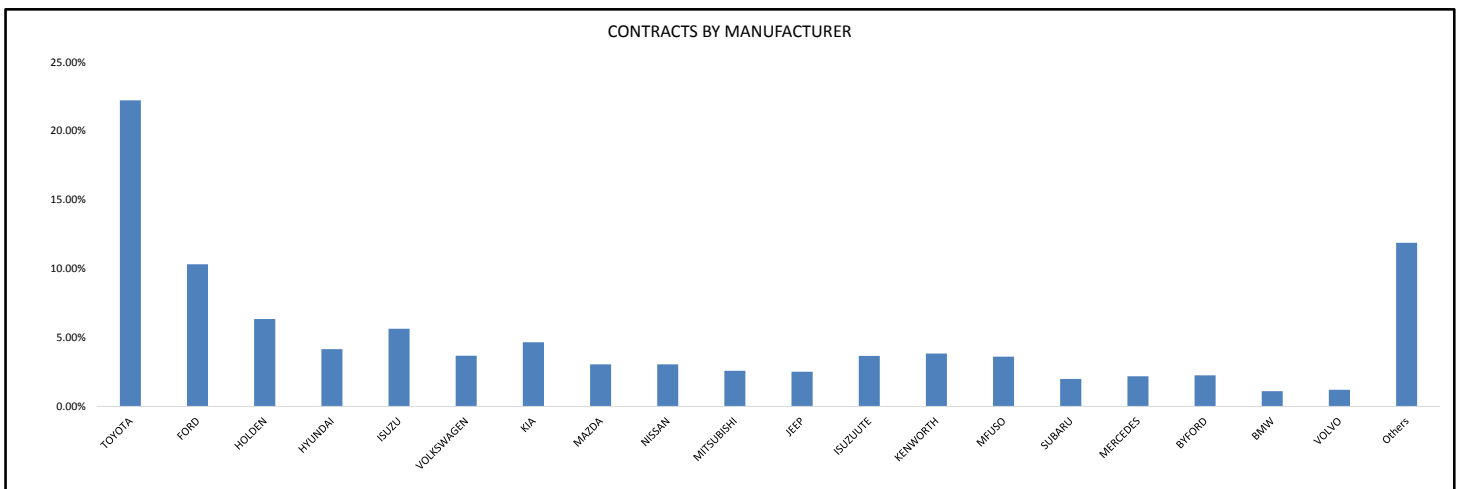
Contracts by State of Delivery

State of Delivery	Number of Contracts	(%) Number of Contracts	Receivables Outstanding	(%) Receivables Outstanding
NSW	1,365	28.90%	\$ 36,189,770	31.45%
VIC	1,528	32.35%	\$ 37,337,680	32.45%
QLD	989	20.94%	\$ 23,304,440	20.25%
WA	441	9.34%	\$ 9,272,891	8.06%
SA	223	4.72%	\$ 5,020,280	4.36%
ACT	37	0.78%	\$ 869,875	0.76%
TAS	96	2.03%	\$ 2,058,341	1.79%
NT	44	0.93%	\$ 1,023,181	0.89%
Total	4,723	100.00%	\$ 115,076,458	100.00%



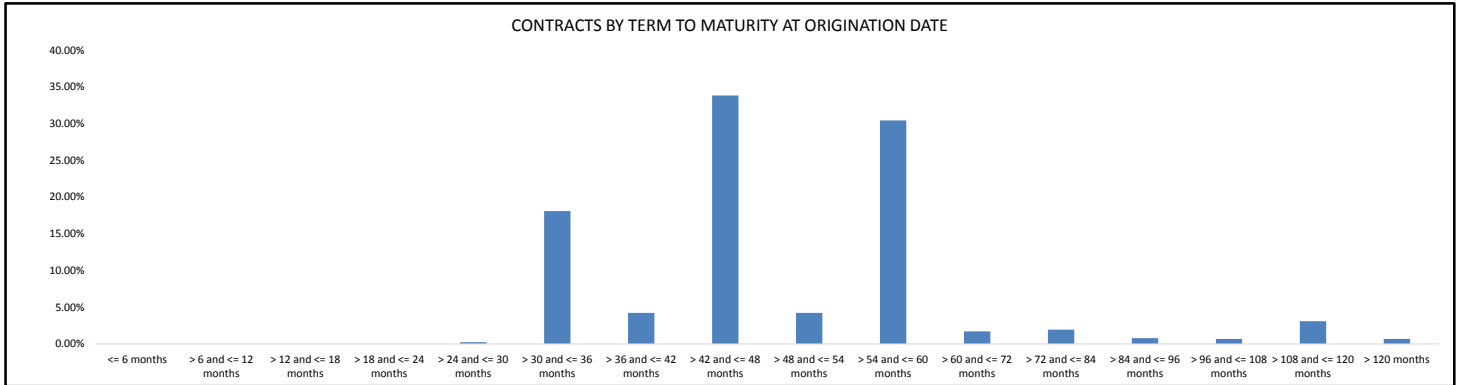
Contracts by Manufacturer

Manufacturer	Number of Contracts	(%) Number of Contracts	Receivables Outstanding	(%) Receivables Outstanding
TOYOTA	1,153	24.41%	\$ 25,579,879	22.23%
FORD	572	12.11%	\$ 11,878,135	10.32%
HOLDEN	419	8.87%	\$ 7,303,844	6.35%
HYUNDAI	316	6.69%	\$ 4,788,496	4.16%
ISUZU	119	2.52%	\$ 6,492,689	5.64%
VOLKSWAGEN	224	4.74%	\$ 4,238,679	3.68%
KIA	325	6.88%	\$ 5,367,872	4.66%
MAZDA	186	3.94%	\$ 3,511,125	3.05%
NISSAN	208	4.40%	\$ 3,513,521	3.05%
MITSUBISHI	153	3.24%	\$ 2,972,636	2.58%
JEEP	127	2.69%	\$ 2,901,269	2.52%
ISUZUUTE	178	3.77%	\$ 4,220,257	3.67%
KENWORTH	29	0.61%	\$ 4,413,968	3.84%
MFUSO	87	1.84%	\$ 4,155,083	3.61%
SUBARU	115	2.43%	\$ 2,299,746	2.00%
MERCEDES	65	1.38%	\$ 2,511,673	2.18%
BYFORD	21	0.44%	\$ 2,594,990	2.26%
BMW	36	0.76%	\$ 1,265,797	1.10%
VOLVO	20	0.42%	\$ 1,389,877	1.21%
Others	370	7.83%	\$ 13,676,923	11.89%
Total	4,723	100.00%	\$ 115,076,458	100.00%



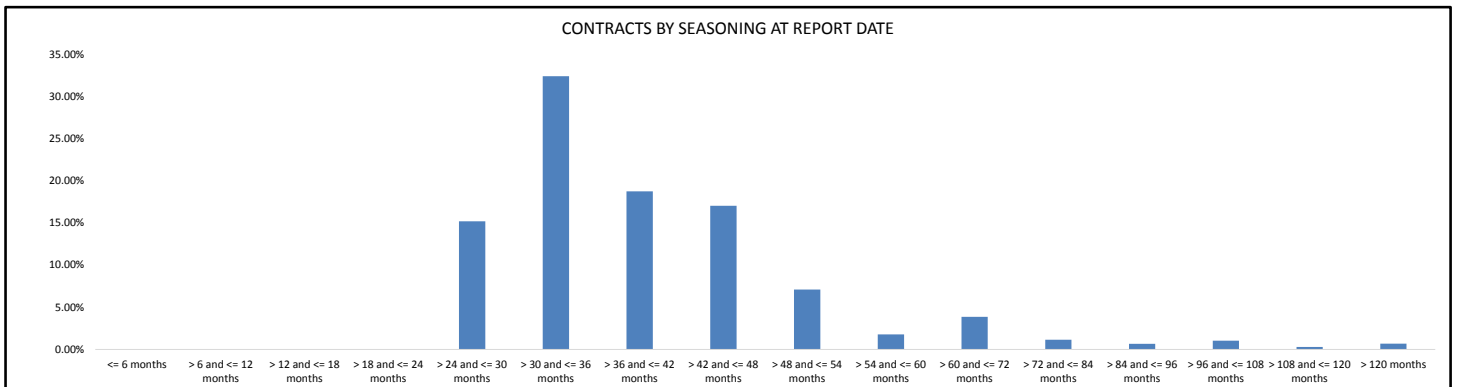
Contracts by Term to Maturity at Origination Date

Term to Maturity at Origination Date	Number of Contracts	(%) Number of Contracts	Receivables Outstanding	(%) Receivables Outstanding
<= 6 months	0	0.00%	\$ -	0.00%
> 6 and <= 12 months	0	0.00%	\$ -	0.00%
> 12 and <= 18 months	0	0.00%	\$ -	0.00%
> 18 and <= 24 months	0	0.00%	\$ -	0.00%
> 24 and <= 30 months	18	0.38%	\$ 266,947	0.23%
> 30 and <= 36 months	1,047	22.17%	\$ 20,844,975	18.11%
> 36 and <= 42 months	252	5.34%	\$ 4,859,509	4.22%
> 42 and <= 48 months	1,786	37.81%	\$ 38,959,234	33.86%
> 48 and <= 54 months	329	6.97%	\$ 4,861,473	4.22%
> 54 and <= 60 months	1,067	22.59%	\$ 35,037,848	30.45%
> 60 and <= 72 months	71	1.50%	\$ 1,965,762	1.71%
> 72 and <= 84 months	50	1.06%	\$ 2,230,049	1.94%
> 84 and <= 96 months	18	0.38%	\$ 904,514	0.79%
> 96 and <= 108 months	20	0.42%	\$ 780,106	0.68%
> 108 and <= 120 months	40	0.85%	\$ 3,570,509	3.10%
> 120 months	25	0.53%	\$ 795,530	0.69%
Total	4,723	100.00%	\$ 115,076,458	100.00%



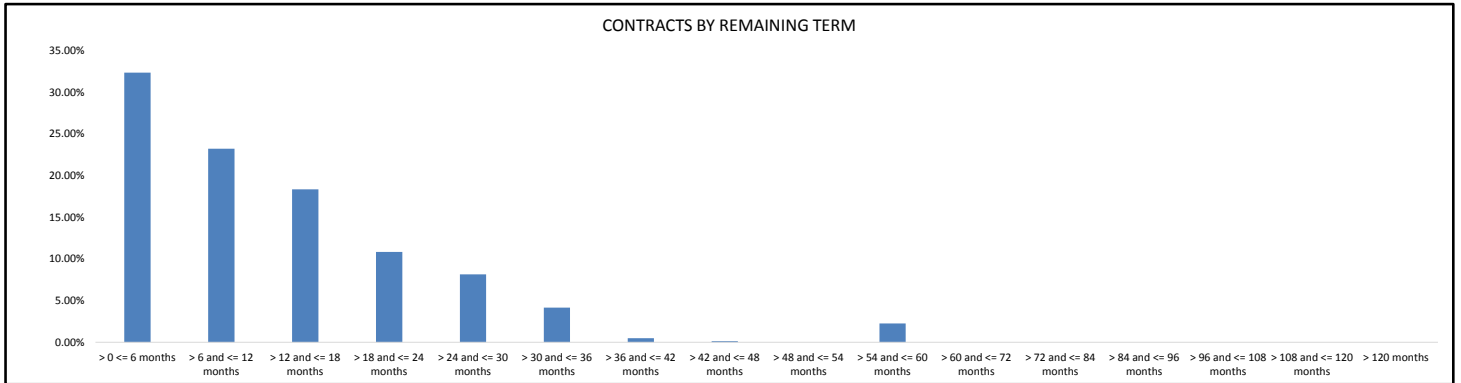
Contracts by Seasoning at Report Date

Seasoning at Report Date	Number of Contracts	(%) Number of Contracts	Receivables Outstanding	(%) Receivables Outstanding
<= 6 months	0	0.00%	\$ -	0.00%
> 6 and <= 12 months	0	0.00%	\$ -	0.00%
> 12 and <= 18 months	0	0.00%	\$ -	0.00%
> 18 and <= 24 months	0	0.00%	\$ -	0.00%
> 24 and <= 30 months	633	13.40%	\$ 17,500,941	15.21%
> 30 and <= 36 months	1,523	32.25%	\$ 37,289,835	32.40%
> 36 and <= 42 months	961	20.35%	\$ 21,576,343	18.75%
> 42 and <= 48 months	874	18.51%	\$ 19,603,906	17.04%
> 48 and <= 54 months	424	8.98%	\$ 8,171,041	7.10%
> 54 and <= 60 months	111	2.35%	\$ 2,059,977	1.79%
> 60 and <= 72 months	83	1.76%	\$ 4,459,770	3.88%
> 72 and <= 84 months	36	0.76%	\$ 1,319,988	1.15%
> 84 and <= 96 months	18	0.38%	\$ 759,572	0.66%
> 96 and <= 108 months	26	0.55%	\$ 1,190,580	1.03%
> 108 and <= 120 months	9	0.19%	\$ 348,793	0.30%
> 120 months	25	0.53%	\$ 795,530	0.69%
Total	4,723	100.00%	\$ 115,076,458	100.00%



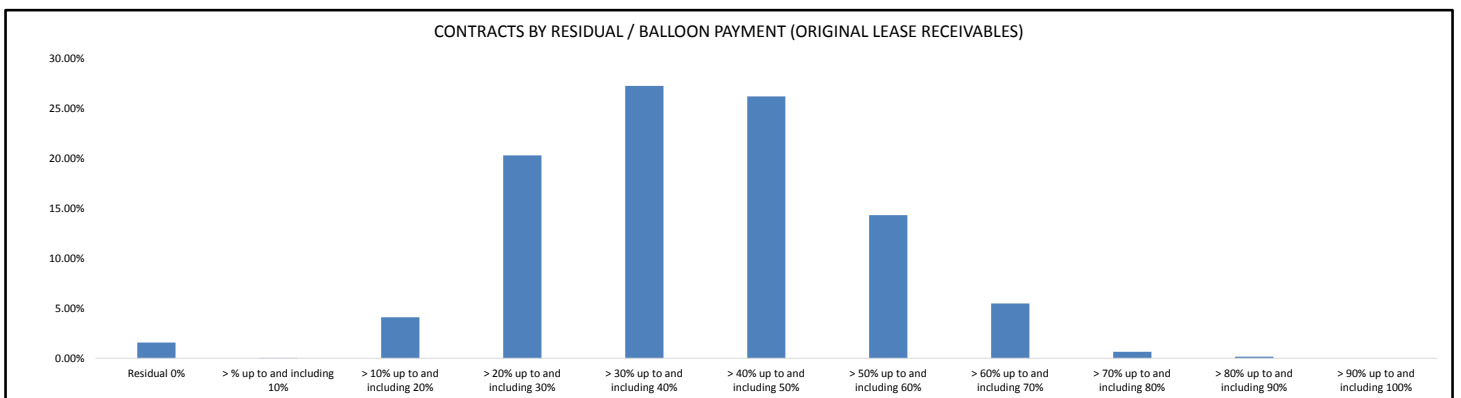
Contracts by Remaining Term

Remaining Term	Number of Contracts	(%) Number of Contracts	Receivables Outstanding	(%) Receivables Outstanding
> 0 <= 6 months	2,042	43.24%	\$ 37,243,931	32.36%
> 6 and <= 12 months	1,185	25.09%	\$ 26,736,596	23.23%
> 12 and <= 18 months	733	15.52%	\$ 21,132,546	18.36%
> 18 and <= 24 months	396	8.38%	\$ 12,492,673	10.86%
> 24 and <= 30 months	248	5.25%	\$ 9,376,096	8.15%
> 30 and <= 36 months	94	1.99%	\$ 4,792,934	4.16%
> 36 and <= 42 months	3	0.06%	\$ 565,072	0.49%
> 42 and <= 48 months	1	0.02%	\$ 141,622	0.12%
> 48 and <= 54 months	0	0.00%	\$ -	0.00%
> 54 and <= 60 months	21	0.44%	\$ 2,594,990	2.26%
> 60 and <= 72 months	0	0.00%	\$ -	0.00%
> 72 and <= 84 months	0	0.00%	\$ -	0.00%
> 84 and <= 96 months	0	0.00%	\$ -	0.00%
> 96 and <= 108 months	0	0.00%	\$ -	0.00%
> 108 and <= 120 months	0	0.00%	\$ -	0.00%
> 120 months	0	0.00%	\$ -	0.00%
Total	4,723	100.00%	\$ 115,076,458	100.00%



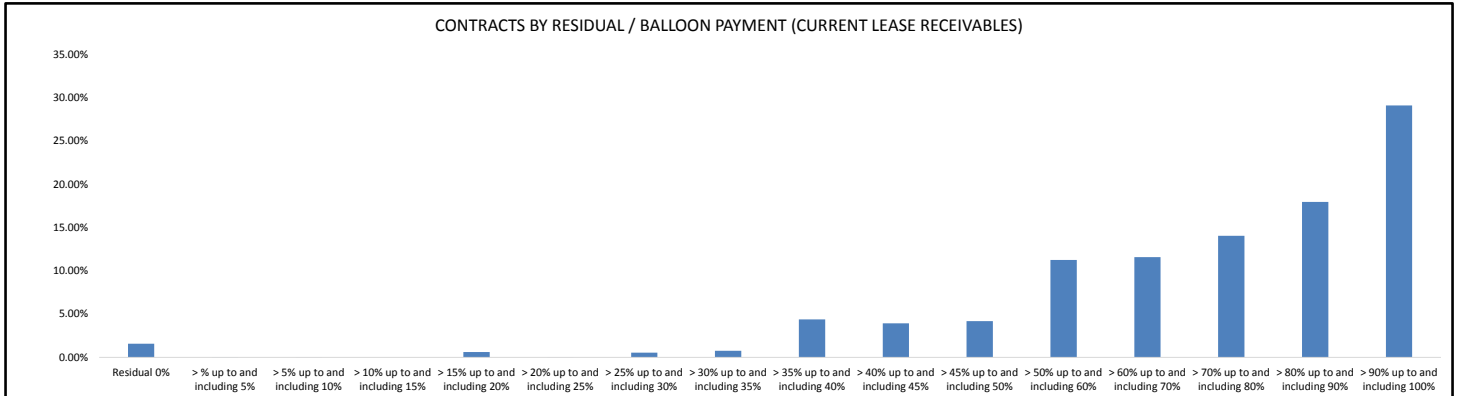
Contracts by Residual/Balloon Payment (Original Lease Receivables)

Residual/Balloon Payment (Original Lease Receivables)	Number of Contracts	(%) Number of Contracts	Receivables Outstanding	(%) Receivables Outstanding
Residual 0%	16	0.34%	\$ 1,815,578	1.58%
> % up to and including 10%	7	0.15%	\$ 44,332	0.04%
> 10% up to and including 20%	171	3.62%	\$ 4,708,481	4.09%
> 20% up to and including 30%	774	16.39%	\$ 23,333,448	20.28%
> 30% up to and including 40%	1,269	26.87%	\$ 31,340,972	27.23%
> 40% up to and including 50%	1,379	29.20%	\$ 30,127,478	26.18%
> 50% up to and including 60%	798	16.90%	\$ 16,464,931	14.31%
> 60% up to and including 70%	270	5.72%	\$ 6,309,703	5.48%
> 70% up to and including 80%	31	0.66%	\$ 743,081	0.65%
> 80% up to and including 90%	8	0.17%	\$ 188,453	0.16%
> 90% up to and including 100%	0	0.00%	\$ -	0.00%
Total	4,723	100.00%	\$ 115,076,458	100.00%



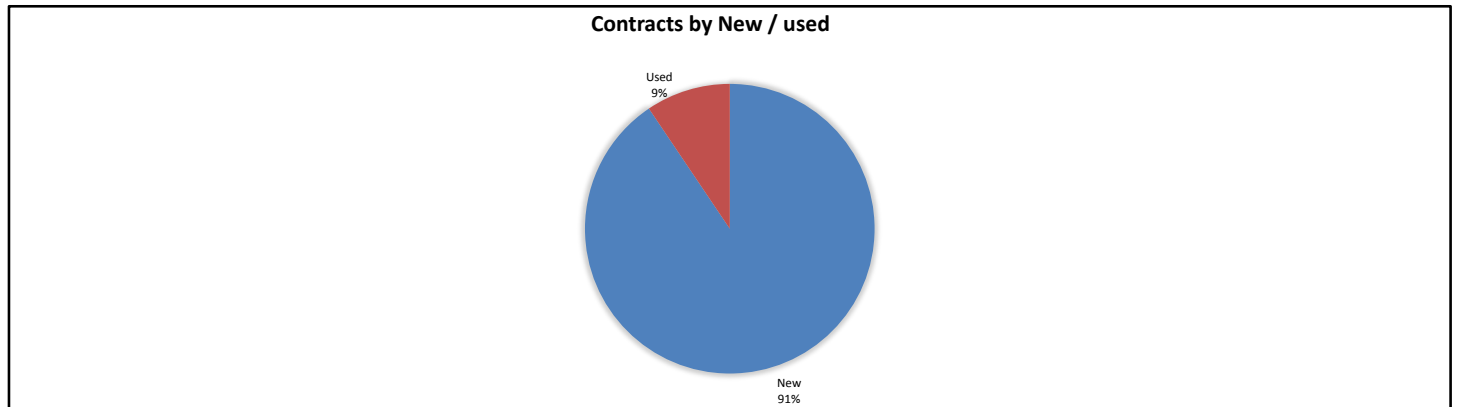
Contracts by Residual/Balloon Payment (Current Lease Receivables)

Residual/Balloon Payment (Current Lease Receivables)	Number of Contracts	(%) Number of Contracts	Receivables Outstanding	(%) Receivables Outstanding
Residual 0%	32	0.68%	\$ 1,815,792	1.58%
> % up to and including 5%	3	0.06%	\$ 23,834	0.02%
> 5% up to and including 10%	1	0.02%	\$ 3,429	0.00%
> 10% up to and including 15%	0	0.00%	\$ -	0.00%
> 15% up to and including 20%	6	0.13%	\$ 719,890	0.63%
> 20% up to and including 25%	1	0.02%	\$ 3,794	0.00%
> 25% up to and including 30%	17	0.36%	\$ 625,540	0.54%
> 30% up to and including 35%	20	0.42%	\$ 876,631	0.76%
> 35% up to and including 40%	107	2.27%	\$ 5,049,849	4.39%
> 40% up to and including 45%	120	2.54%	\$ 4,521,184	3.93%
> 45% up to and including 50%	171	3.62%	\$ 4,816,446	4.19%
> 50% up to and including 60%	398	8.43%	\$ 12,953,447	11.26%
> 60% up to and including 70%	452	9.57%	\$ 13,323,386	11.58%
> 70% up to and including 80%	697	14.76%	\$ 16,172,035	14.05%
> 80% up to and including 90%	954	20.20%	\$ 20,664,086	17.96%
> 90% up to and including 100%	1,744	36.93%	\$ 33,507,117	29.12%
Total	4,723	100.00%	\$ 115,076,458	100.00%



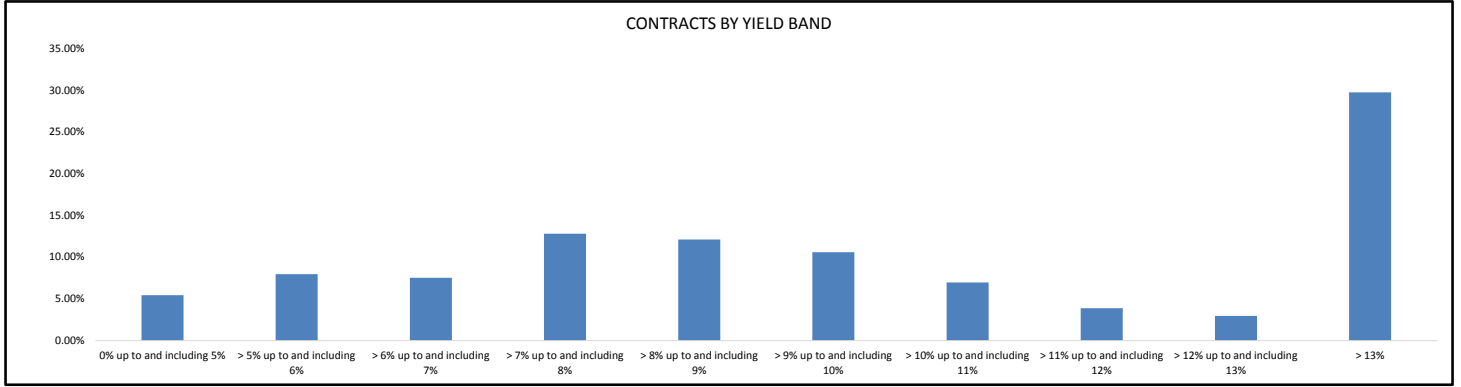
Contracts by New / Used

New / Used	Number of Contracts	(%) Number of Contracts	Receivables Outstanding	(%) Receivables Outstanding
New	4,404	93.25%	\$ 104,221,755	90.57%
Used	319	6.75%	\$ 10,854,703	9.43%
Total	4,723	100.00%	\$ 115,076,458	100.00%



Contracts by Yield Band

Yield Band	Number of Contracts	(%) Number of Contracts	Receivables Outstanding	(%) Receivables Outstanding
0% up to and including 5%	310	6.56%	\$ 6,258,336	5.44%
> 5% up to and including 6%	270	5.72%	\$ 9,172,770	7.97%
> 6% up to and including 7%	276	5.84%	\$ 8,657,527	7.52%
> 7% up to and including 8%	419	8.87%	\$ 14,735,864	12.81%
> 8% up to and including 9%	494	10.46%	\$ 13,934,543	12.11%
> 9% up to and including 10%	545	11.54%	\$ 12,188,562	10.59%
> 10% up to and including 11%	359	7.60%	\$ 8,012,539	6.96%
> 11% up to and including 12%	236	5.00%	\$ 4,467,145	3.88%
> 12% up to and including 13%	180	3.81%	\$ 3,416,642	2.97%
> 13%	1,634	34.60%	\$ 34,232,530	29.75%
Total	4,723	100.00%	\$ 115,076,458	100.00%



Contracts by Interest Rate

Interest Rate	Number of Contracts	(%) Number of Contracts	Receivables Outstanding	(%) Receivables Outstanding
0%	0	0.00%	\$ -	0.00%
> 0% up to and including 2%	0	0.00%	\$ -	0.00%
> 2% up to and including 4%	107	2.27%	\$ 2,141,165	1.86%
> 4% up to and including 6%	894	18.93%	\$ 24,848,592	21.59%
> 6% up to and including 8%	3,113	65.91%	\$ 73,146,127	63.56%
> 8% up to and including 10%	535	11.33%	\$ 12,487,356	10.85%
> 10% up to and including 12%	54	1.14%	\$ 1,401,165	1.22%
> 12% up to and including 14%	17	0.36%	\$ 964,279	0.84%
> 14% up to and including 16%	3	0.06%	\$ 87,773	0.08%
> 16% up to and including 18%	0	0.00%	\$ -	0.00%
> 18% up to and including 20%	0	0.00%	\$ -	0.00%
> 20%	0	0.00%	\$ -	0.00%
Total	4,723	100.00%	\$ 115,076,458	100.00%

