



FP Turbo Series 2016-1 Trust as at 31 March 2019

Portfolio Summary	
Portfolio size	\$ 103,056,382.65
Number of contracts	4,329
Number of obligors	632
Weighted average yield (p.a.)	11.06%
Average contract balance (current)	\$ 23,806.05
Maximum contract balance (current)	\$ 198,906.02
Average contract balance (original)	\$ 48,041.71
Maximum contract balance (original)	\$ 487,571.03
Weighted average total contract term (months)	54.08
Weighted average seasoning (months)	42.18
Weighted average remaining term (months)	11.90
Maximum remaining term (months)	55.07
Weighted average residual (current)	65.99%
Weighted average residual (original)	33.27%
Weighted average balloon percentage	75.53%
Balloon payments contract balance	\$ 101,296,865.73
Balloon payments contract count	4,302
Balloon payments value	\$ 77,837,782.56
Maximum balloon payment	\$ 189,486.36
Maximum contract balance	\$ 198,906.02

Top 10 Obligor

Customer Code	Number of Contracts	(%) Number of Contracts	Receivables Outstanding	(%) Receivables Outstanding
AAN0481	292	6.75%	\$ 6,316,717	6.13%
ARO0130	81	1.87%	\$ 5,701,926	5.53%
ARI0248	319	7.37%	\$ 5,147,972	5.00%
AMU0167	116	2.68%	\$ 4,937,634	4.79%
AAG0025	147	3.40%	\$ 3,862,374	3.75%
ATE0041	181	4.18%	\$ 3,421,760	3.32%
ATS0013	148	3.42%	\$ 2,870,908	2.79%
ASP0122	28	0.65%	\$ 2,813,480	2.73%
AGI0035	74	1.71%	\$ 1,823,824	1.77%
AVE0083	73	1.69%	\$ 1,305,963	1.27%
Total	1,459	33.70%	\$ 38,202,557	37.07%

Top 10 Contract Balance

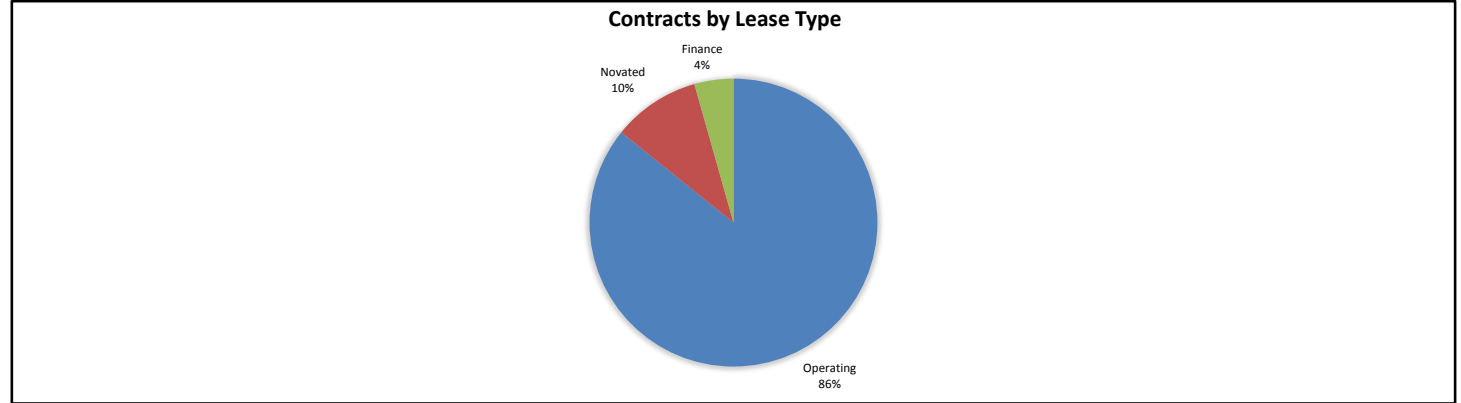
	Receivables Outstanding
1st Decile Upper Limit	\$ 198,906
2nd Decile Upper Limit	\$ 198,754
3rd Decile Upper Limit	\$ 183,079
4th Decile Upper Limit	\$ 182,742
5th Decile Upper Limit	\$ 181,139
6th Decile Upper Limit	\$ 177,514
7th Decile Upper Limit	\$ 175,611
8th Decile Upper Limit	\$ 173,056
9th Decile Upper Limit	\$ 171,627
10th Decile Upper Limit	\$ 171,015

Top 10 Contract Aggregate Balance

	Receivables Outstanding
Aggregate Balance- 1st Decile	\$ 198,906
Aggregate Balance- 2nd Decile	\$ 198,754
Aggregate Balance- 3rd Decile	\$ 183,079
Aggregate Balance- 4th Decile	\$ 182,742
Aggregate Balance- 5th Decile	\$ 181,139
Aggregate Balance- 6th Decile	\$ 177,514
Aggregate Balance- 7th Decile	\$ 175,611
Aggregate Balance- 8th Decile	\$ 173,056
Aggregate Balance- 9th Decile	\$ 171,627
Aggregate Balance- 10th Decile	\$ 171,015
Total	\$ 1,813,444

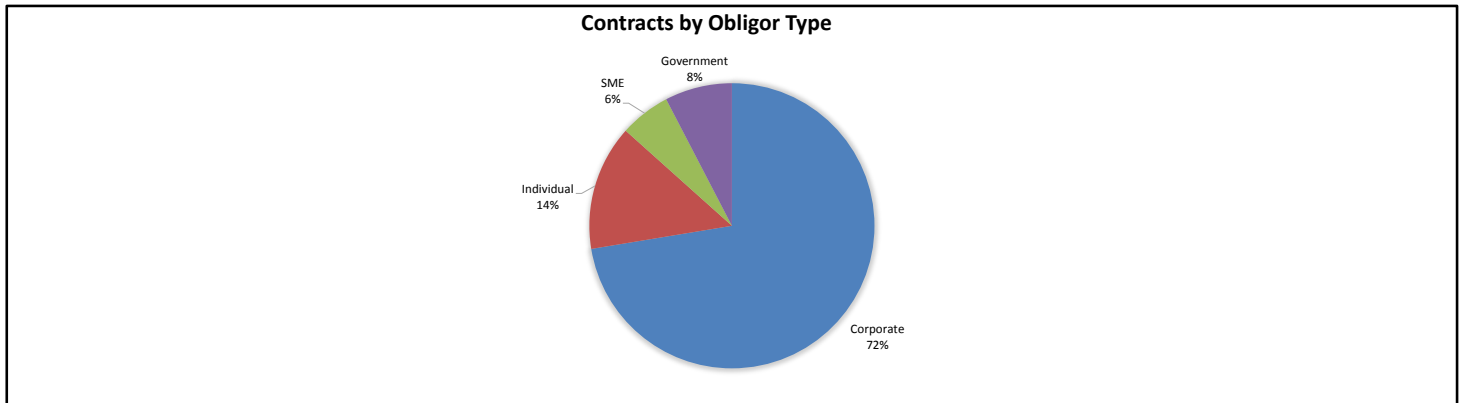
Contracts by Lease Type

Lease Type	Number of Contracts	(%) Number of Contracts	Receivables Outstanding	(%) Receivables Outstanding
Operating	3,684	85.10%	\$ 88,406,841	85.78%
Novated	430	9.93%	\$ 10,129,672	9.83%
Finance	215	4.97%	\$ 4,519,869	4.39%
Total	4,329	100.00%	\$ 103,056,383	100.00%



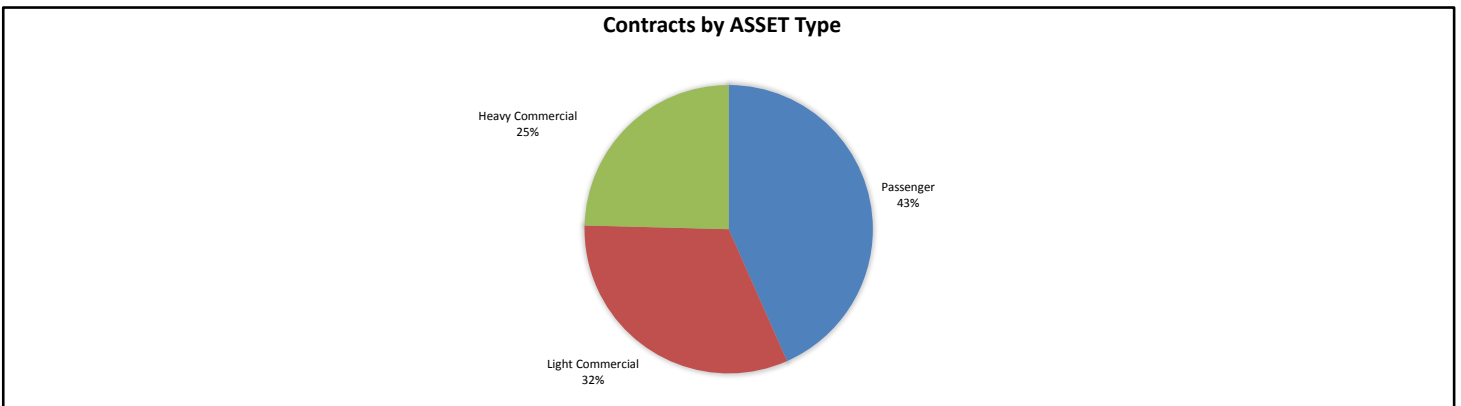
Contracts by Obligor Type

Obligor Type	Number of Contracts	(%) Number of Contracts	Receivables Outstanding	(%) Receivables Outstanding
Corporate	3,203	73.99%	\$ 74,617,357	72.40%
Individual	645	14.90%	\$ 14,649,541	14.22%
SME	330	7.62%	\$ 5,930,881	5.75%
Government	151	3.49%	\$ 7,858,603	7.63%
Total	4,329	100.00%	\$ 103,056,383	100.00%



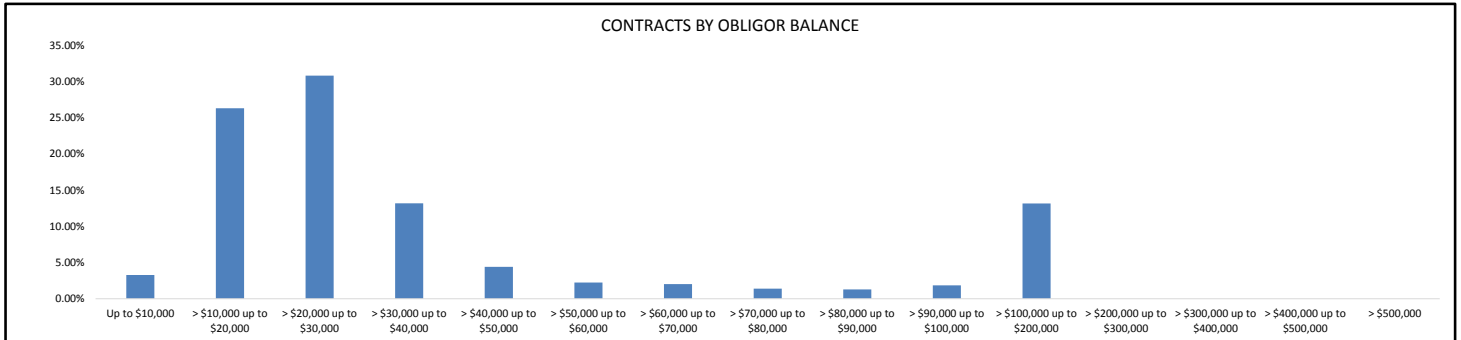
Contracts by Asset Type

Asset Type	Number of Contracts	(%) Number of Contracts	Receivables Outstanding	(%) Receivables Outstanding
Passenger	2,475	57.17%	\$ 44,688,761	43.36%
Light Commercial	1,465	33.84%	\$ 33,031,840	32.05%
Heavy Commercial	389	8.99%	\$ 25,335,781	24.58%
Total	4,329	100.00%	\$ 103,056,383	100.00%



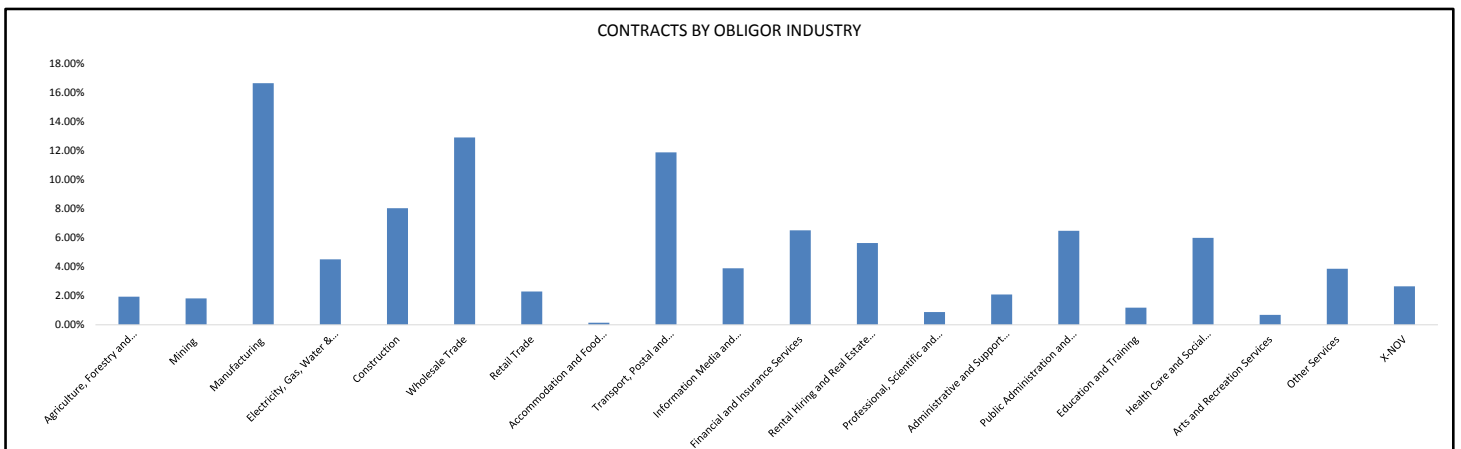
Contracts by Obligor Balance

Obligor Balance	Number of Contracts	(%) Number of Contracts	Receivables Outstanding	(%) Receivables Outstanding
Up to \$10,000	473	10.93%	\$ 3,392,202	3.29%
> \$10,000 up to \$20,000	1,806	41.72%	\$ 27,122,957	26.32%
> \$20,000 up to \$30,000	1,319	30.47%	\$ 31,778,082	30.84%
> \$30,000 up to \$40,000	399	9.22%	\$ 13,587,945	13.18%
> \$40,000 up to \$50,000	103	2.38%	\$ 4,543,159	4.41%
> \$50,000 up to \$60,000	42	0.97%	\$ 2,308,401	2.24%
> \$60,000 up to \$70,000	32	0.74%	\$ 2,081,698	2.02%
> \$70,000 up to \$80,000	19	0.44%	\$ 1,439,895	1.40%
> \$80,000 up to \$90,000	16	0.37%	\$ 1,332,731	1.29%
> \$90,000 up to \$100,000	20	0.46%	\$ 1,906,633	1.85%
> \$100,000 up to \$200,000	100	2.31%	\$ 13,562,680	13.16%
> \$200,000 up to \$300,000	0	0.00%	\$ -	0.00%
> \$300,000 up to \$400,000	0	0.00%	\$ -	0.00%
> \$400,000 up to \$500,000	0	0.00%	\$ -	0.00%
> \$500,000	0	0.00%	\$ -	0.00%
Total	4,329	100.00%	\$ 103,056,383	100.00%



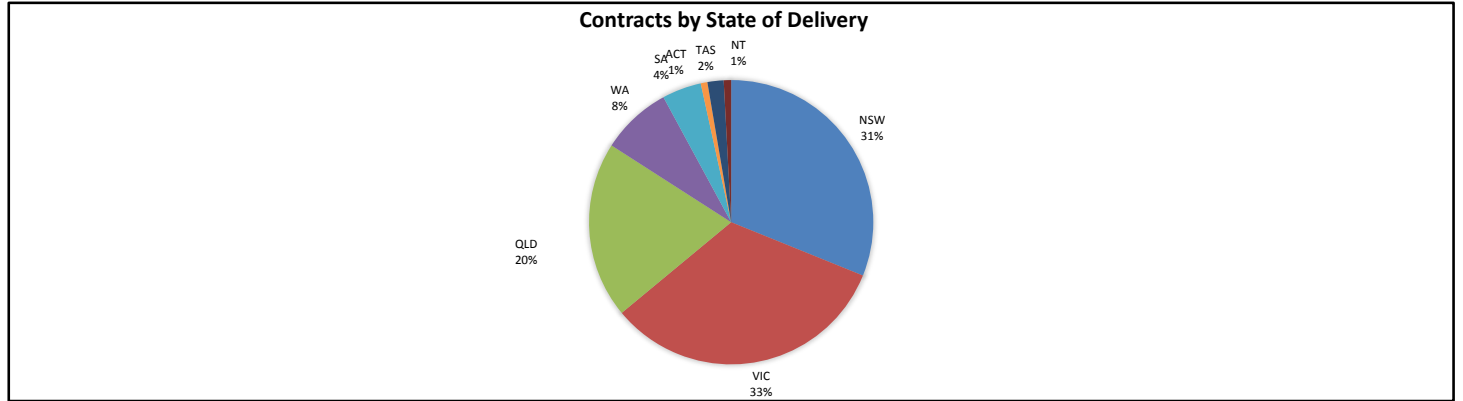
Contracts by Obligor Industry

Obligor Industry	Number of Contracts	(%) Number of Contracts	Receivables Outstanding	(%) Receivables Outstanding
ANZSIC Industry Division: Agriculture, Forestry and Fishing	86	1.99%	\$ 1,995,535	1.94%
ANZSIC Industry Division: Mining	72	1.66%	\$ 1,871,615	1.82%
ANZSIC Industry Division: Manufacturing	661	15.27%	\$ 17,152,172	16.64%
ANZSIC Industry Division: Electricity, Gas, Water and Waste Services	239	5.52%	\$ 4,650,885	4.51%
ANZSIC Industry Division: Construction	375	8.66%	\$ 8,280,937	8.04%
ANZSIC Industry Division: Wholesale Trade	588	13.58%	\$ 13,304,086	12.91%
ANZSIC Industry Division: Retail Trade	124	2.86%	\$ 2,361,381	2.29%
ANZSIC Industry Division: Accommodation and Food Services	8	0.18%	\$ 147,989	0.14%
ANZSIC Industry Division: Transport, Postal and Warehousing	234	5.41%	\$ 12,248,345	11.89%
ANZSIC Industry Division: Information Media and Telecommunications	202	4.67%	\$ 4,010,120	3.89%
ANZSIC Industry Division: Financial and Insurance Services	312	7.21%	\$ 6,704,362	6.51%
ANZSIC Industry Division: Rental, Hiring and Real Estate Services	352	8.13%	\$ 5,807,394	5.64%
ANZSIC Industry Division: Professional, Scientific and Technical Services	46	1.06%	\$ 901,946	0.88%
ANZSIC Industry Division: Administrative and Support Services	110	2.54%	\$ 2,157,672	2.09%
ANZSIC Industry Division: Public Administration and Safety	133	3.07%	\$ 6,675,249	6.48%
ANZSIC Industry Division: Education and Training	52	1.20%	\$ 1,213,206	1.18%
ANZSIC Industry Division: Health Care and Social Assistance	375	8.66%	\$ 6,172,631	5.99%
ANZSIC Industry Division: Arts and Recreational Services	49	1.13%	\$ 698,767	0.68%
Other Services	187	4.32%	\$ 3,973,484	3.86%
X-NOV	124	2.86%	\$ 2,728,607	2.65%
Total	4,329	100.00%	\$ 103,056,383	100.00%



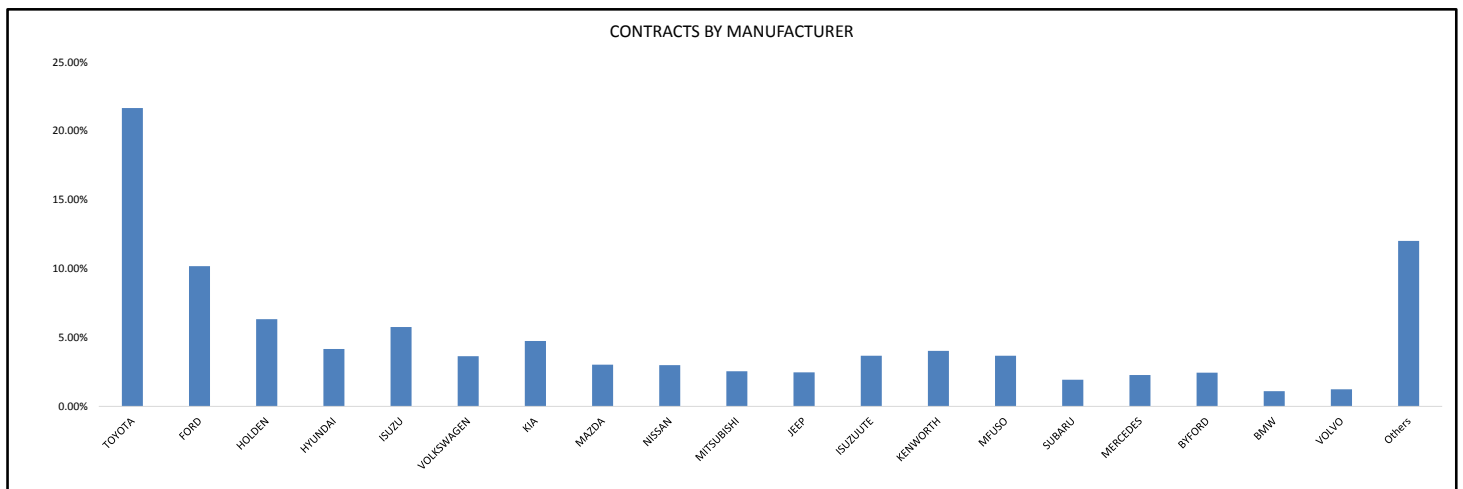
Contracts by State of Delivery

State of Delivery	Number of Contracts	(%) Number of Contracts	Receivables Outstanding	(%) Receivables Outstanding
NSW	1,236	28.55%	\$ 32,074,230	31.12%
VIC	1,418	32.76%	\$ 33,869,731	32.87%
QLD	898	20.74%	\$ 20,704,658	20.09%
WA	402	9.29%	\$ 8,261,442	8.02%
SA	209	4.83%	\$ 4,601,280	4.46%
ACT	35	0.81%	\$ 783,971	0.76%
TAS	92	2.13%	\$ 1,896,040	1.84%
NT	39	0.90%	\$ 865,031	0.84%
Total	4,329	100.00%	\$ 103,056,383	100.00%



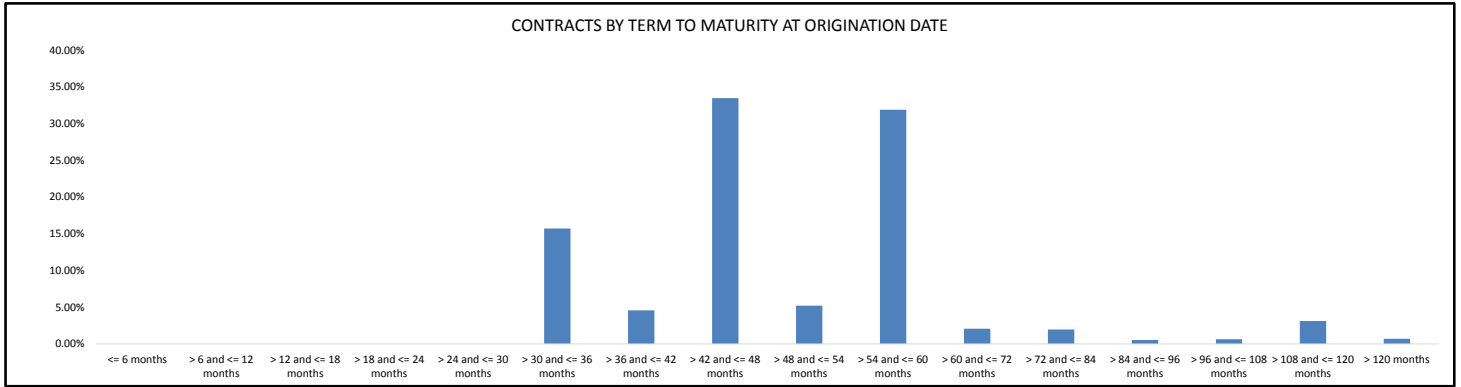
Contracts by Manufacturer

Manufacturer	Number of Contracts	(%) Number of Contracts	Receivables Outstanding	(%) Receivables Outstanding
TOYOTA	1,029	23.77%	\$ 22,328,655	21.67%
FORD	523	12.08%	\$ 10,502,320	10.19%
HOLDEN	391	9.03%	\$ 6,524,539	6.33%
HYUNDAI	297	6.86%	\$ 4,299,137	4.17%
ISUZU	112	2.59%	\$ 5,946,951	5.77%
VOLKSWAGEN	201	4.64%	\$ 3,760,629	3.65%
KIA	305	7.05%	\$ 4,895,524	4.75%
MAZDA	171	3.95%	\$ 3,124,948	3.03%
NISSAN	192	4.44%	\$ 3,086,600	3.00%
MITSUBISHI	137	3.16%	\$ 2,626,629	2.55%
JEEP	114	2.63%	\$ 2,541,665	2.47%
ISUZUUTE	165	3.81%	\$ 3,796,270	3.68%
KENWORTH	28	0.65%	\$ 4,150,588	4.03%
MFUSO	83	1.92%	\$ 3,792,410	3.68%
SUBARU	104	2.40%	\$ 1,996,012	1.94%
MERCEDES	60	1.39%	\$ 2,344,865	2.28%
BYFORD	21	0.49%	\$ 2,522,626	2.45%
BMW	32	0.74%	\$ 1,142,152	1.11%
VOLVO	20	0.46%	\$ 1,285,219	1.25%
Others	344	7.95%	\$ 12,388,644	12.02%
Total	4,329	100.00%	\$ 103,056,383	100.00%



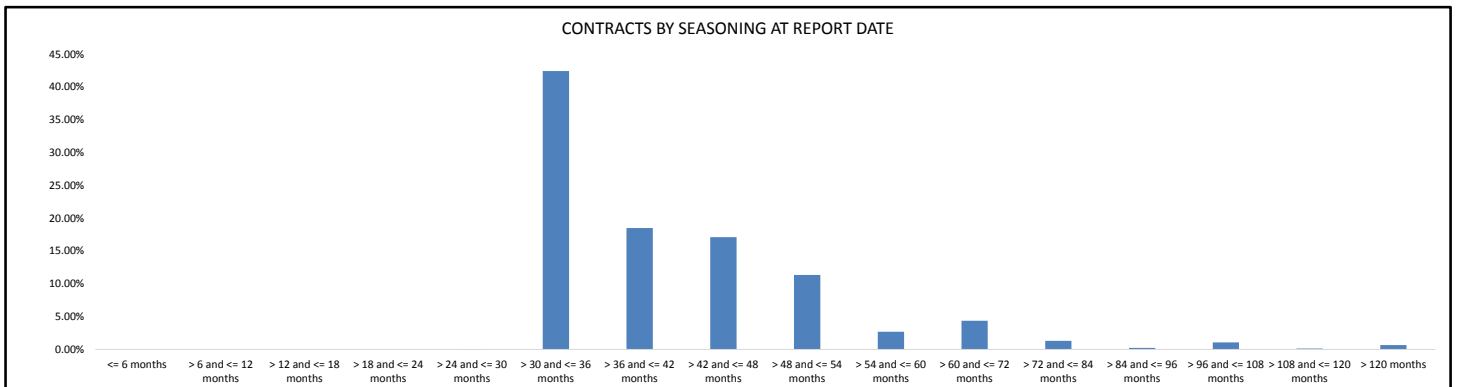
Contracts by Term to Maturity at Origination Date

Term to Maturity at Origination Date	Number of Contracts	(%) Number of Contracts	Receivables Outstanding	(%) Receivables Outstanding
<= 6 months	0	0.00%	\$ -	0.00%
> 6 and <= 12 months	0	0.00%	\$ -	0.00%
> 12 and <= 18 months	0	0.00%	\$ -	0.00%
> 18 and <= 24 months	0	0.00%	\$ -	0.00%
> 24 and <= 30 months	0	0.00%	\$ -	0.00%
> 30 and <= 36 months	876	20.24%	\$ 16,220,764	15.74%
> 36 and <= 42 months	250	5.78%	\$ 4,716,769	4.58%
> 42 and <= 48 months	1,596	36.87%	\$ 34,513,416	33.49%
> 48 and <= 54 months	354	8.18%	\$ 5,379,944	5.22%
> 54 and <= 60 months	1,025	23.68%	\$ 32,887,505	31.91%
> 60 and <= 72 months	95	2.19%	\$ 2,147,588	2.08%
> 72 and <= 84 months	43	0.99%	\$ 2,030,490	1.97%
> 84 and <= 96 months	15	0.35%	\$ 557,388	0.54%
> 96 and <= 108 months	15	0.35%	\$ 659,496	0.64%
> 108 and <= 120 months	34	0.79%	\$ 3,210,071	3.11%
> 120 months	26	0.60%	\$ 732,953	0.71%
Total	4,329	100.00%	\$ 103,056,383	100.00%



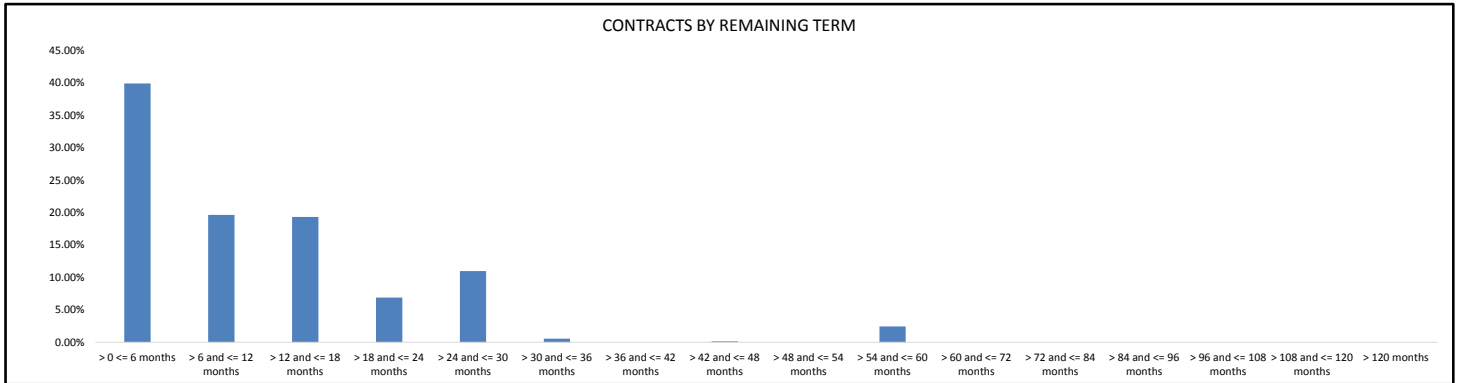
Contracts by Seasoning at Report Date

Seasoning at Report Date	Number of Contracts	(%) Number of Contracts	Receivables Outstanding	(%) Receivables Outstanding
<= 6 months	0	0.00%	\$ -	0.00%
> 6 and <= 12 months	0	0.00%	\$ -	0.00%
> 12 and <= 18 months	0	0.00%	\$ -	0.00%
> 18 and <= 24 months	0	0.00%	\$ -	0.00%
> 24 and <= 30 months	4	0.09%	\$ 67,617	0.07%
> 30 and <= 36 months	1,767	40.82%	\$ 43,746,784	42.45%
> 36 and <= 42 months	869	20.07%	\$ 19,082,614	18.52%
> 42 and <= 48 months	862	19.91%	\$ 17,644,017	17.12%
> 48 and <= 54 months	478	11.04%	\$ 11,703,476	11.36%
> 54 and <= 60 months	156	3.60%	\$ 2,788,737	2.71%
> 60 and <= 72 months	97	2.24%	\$ 4,497,848	4.36%
> 72 and <= 84 months	36	0.83%	\$ 1,348,567	1.31%
> 84 and <= 96 months	8	0.18%	\$ 247,491	0.24%
> 96 and <= 108 months	23	0.53%	\$ 1,105,090	1.07%
> 108 and <= 120 months	5	0.12%	\$ 148,678	0.14%
> 120 months	24	0.55%	\$ 675,463	0.66%
Total	4,329	100.00%	\$ 103,056,383	100.00%



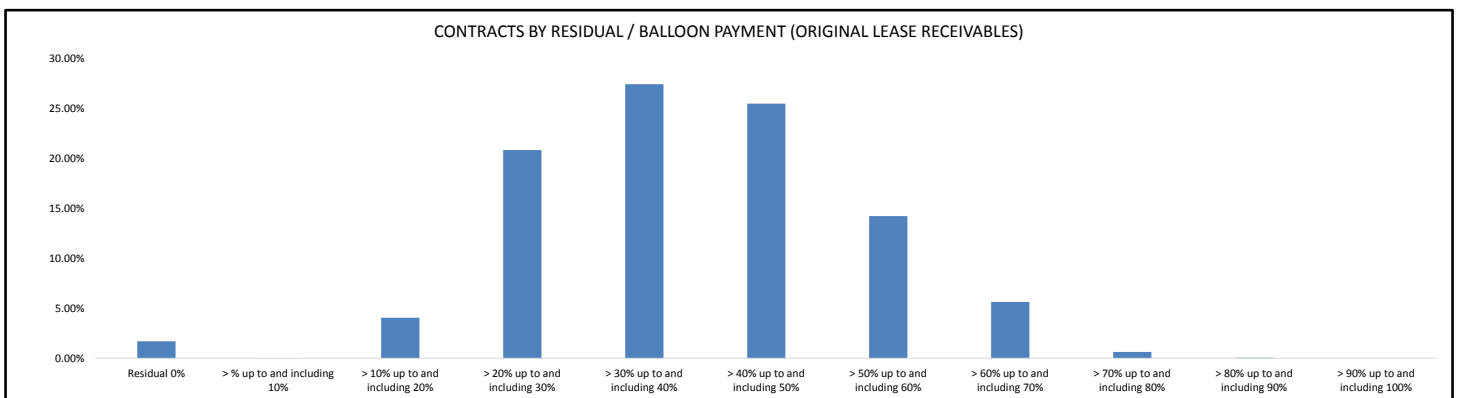
Contracts by Remaining Term

Remaining Term	Number of Contracts	(%) Number of Contracts	Receivables Outstanding	(%) Receivables Outstanding
> 0 <= 6 months	2,241	51.77%	\$ 41,180,417	39.96%
> 6 and <= 12 months	857	19.80%	\$ 20,268,749	19.67%
> 12 and <= 18 months	719	16.61%	\$ 19,938,934	19.35%
> 18 and <= 24 months	210	4.85%	\$ 7,105,742	6.90%
> 24 and <= 30 months	275	6.35%	\$ 11,317,365	10.98%
> 30 and <= 36 months	5	0.12%	\$ 584,420	0.57%
> 36 and <= 42 months	0	0.00%	\$ -	0.00%
> 42 and <= 48 months	1	0.02%	\$ 138,131	0.13%
> 48 and <= 54 months	0	0.00%	\$ -	0.00%
> 54 and <= 60 months	21	0.49%	\$ 2,522,626	2.45%
> 60 and <= 72 months	0	0.00%	\$ -	0.00%
> 72 and <= 84 months	0	0.00%	\$ -	0.00%
> 84 and <= 96 months	0	0.00%	\$ -	0.00%
> 96 and <= 108 months	0	0.00%	\$ -	0.00%
> 108 and <= 120 months	0	0.00%	\$ -	0.00%
> 120 months	0	0.00%	\$ -	0.00%
Total	4,329	100.00%	\$ 103,056,383	100.00%



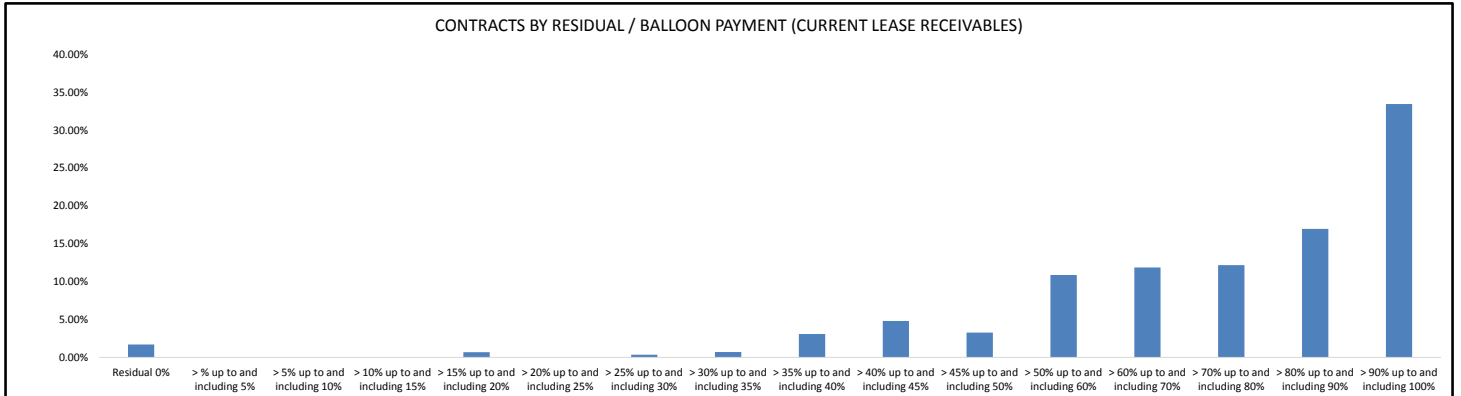
Contracts by Residual/Balloon Payment (Original Lease Receivables)

Residual/Balloon Payment (Original Lease Receivables)	Number of Contracts	(%) Number of Contracts	Receivables Outstanding	(%) Receivables Outstanding
Residual 0%	16	0.37%	\$ 1,757,069	1.70%
> % up to and including 10%	5	0.12%	\$ 25,039	0.02%
> 10% up to and including 20%	160	3.70%	\$ 4,182,093	4.06%
> 20% up to and including 30%	736	17.00%	\$ 21,454,833	20.82%
> 30% up to and including 40%	1,161	26.82%	\$ 28,244,783	27.41%
> 40% up to and including 50%	1,240	28.64%	\$ 26,240,337	25.46%
> 50% up to and including 60%	725	16.75%	\$ 14,647,380	14.21%
> 60% up to and including 70%	256	5.91%	\$ 5,801,888	5.63%
> 70% up to and including 80%	28	0.65%	\$ 656,449	0.64%
> 80% up to and including 90%	2	0.05%	\$ 46,512	0.05%
> 90% up to and including 100%	0	0.00%	\$ -	0.00%
Total	4,329	100.00%	\$ 103,056,383	100.00%



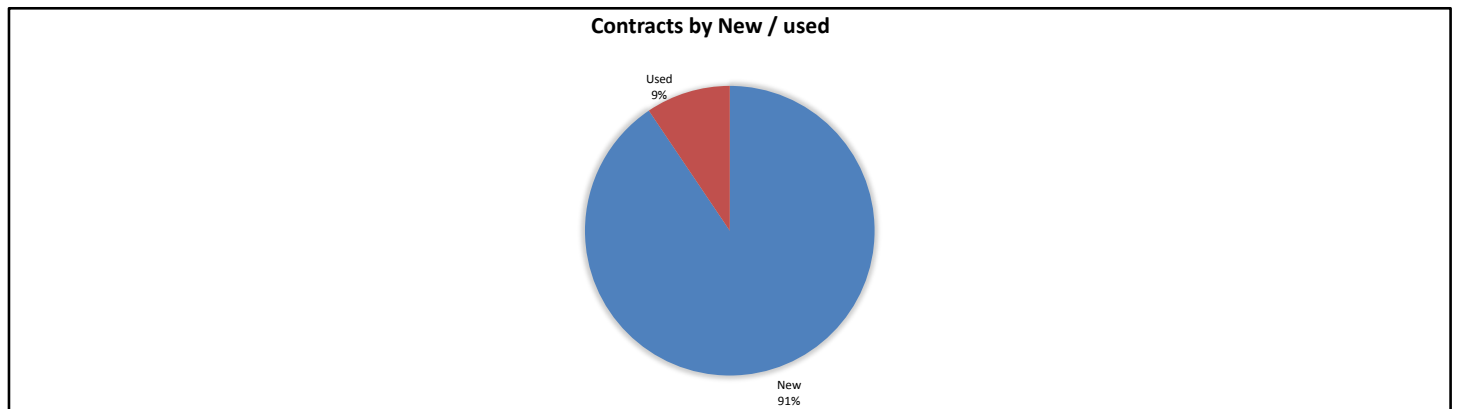
Contracts by Residual/Balloon Payment (Current Lease Receivables)

Residual/Balloon Payment (Current Lease Receivables)	Number of Contracts	(%) Number of Contracts	Receivables Outstanding	(%) Receivables Outstanding
Residual 0%	27	0.62%	\$ 1,759,517	1.71%
> % up to and including 5%	1	0.02%	\$ 4,788	0.00%
> 5% up to and including 10%	1	0.02%	\$ 1,481	0.00%
> 10% up to and including 15%	1	0.02%	\$ 2,665	0.00%
> 15% up to and including 20%	6	0.14%	\$ 701,832	0.68%
> 20% up to and including 25%	1	0.02%	\$ 8,708	0.01%
> 25% up to and including 30%	8	0.18%	\$ 377,157	0.37%
> 30% up to and including 35%	18	0.42%	\$ 722,814	0.70%
> 35% up to and including 40%	50	1.16%	\$ 3,187,584	3.09%
> 40% up to and including 45%	152	3.51%	\$ 4,959,310	4.81%
> 45% up to and including 50%	115	2.66%	\$ 3,375,132	3.28%
> 50% up to and including 60%	355	8.20%	\$ 11,205,886	10.87%
> 60% up to and including 70%	422	9.75%	\$ 12,234,095	11.87%
> 70% up to and including 80%	532	12.29%	\$ 12,554,722	12.18%
> 80% up to and including 90%	810	18.71%	\$ 17,489,550	16.97%
> 90% up to and including 100%	1,830	42.27%	\$ 34,471,143	33.45%
Total	4,329	100.00%	\$ 103,056,383	100.00%



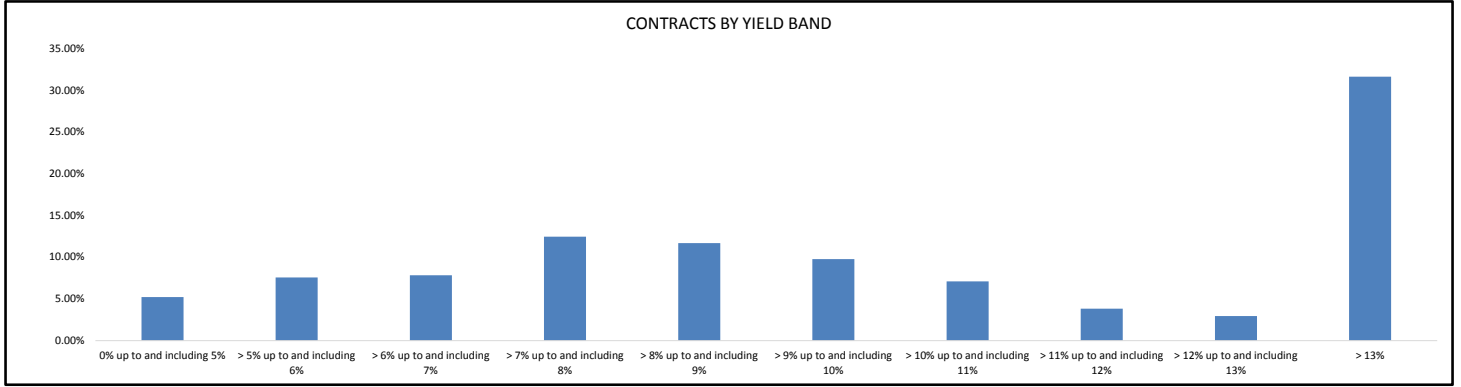
Contracts by New / Used

New / Used	Number of Contracts	(%) Number of Contracts	Receivables Outstanding	(%) Receivables Outstanding
New	4,051	93.58%	\$ 93,326,670	90.56%
Used	278	6.42%	\$ 9,729,713	9.44%
Total	4,329	100.00%	\$ 103,056,383	100.00%



Contracts by Yield Band

Yield Band	Number of Contracts	(%) Number of Contracts	Receivables Outstanding	(%) Receivables Outstanding
0% up to and including 5%	275	6.35%	\$ 5,369,177	5.21%
> 5% up to and including 6%	221	5.11%	\$ 7,790,076	7.56%
> 6% up to and including 7%	251	5.80%	\$ 8,068,168	7.83%
> 7% up to and including 8%	364	8.41%	\$ 12,830,233	12.45%
> 8% up to and including 9%	429	9.91%	\$ 12,042,378	11.69%
> 9% up to and including 10%	461	10.65%	\$ 10,058,994	9.76%
> 10% up to and including 11%	336	7.76%	\$ 7,321,453	7.10%
> 11% up to and including 12%	212	4.90%	\$ 3,951,365	3.83%
> 12% up to and including 13%	169	3.90%	\$ 3,034,109	2.94%
> 13%	1,611	37.21%	\$ 32,590,430	31.62%
Total	4,329	100.00%	\$ 103,056,383	100.00%



Contracts by Interest Rate

Interest Rate	Number of Contracts	(%) Number of Contracts	Receivables Outstanding	(%) Receivables Outstanding
0%	0	0.00%	\$ -	0.00%
> 0% up to and including 2%	0	0.00%	\$ -	0.00%
> 2% up to and including 4%	89	2.06%	\$ 1,758,674	1.71%
> 4% up to and including 6%	783	18.09%	\$ 21,900,674	21.25%
> 6% up to and including 8%	2,887	66.69%	\$ 66,009,420	64.05%
> 8% up to and including 10%	506	11.69%	\$ 11,225,438	10.89%
> 10% up to and including 12%	48	1.11%	\$ 1,303,032	1.26%
> 12% up to and including 14%	13	0.30%	\$ 775,331	0.75%
> 14% up to and including 16%	3	0.07%	\$ 83,813	0.08%
> 16% up to and including 18%	0	0.00%	\$ -	0.00%
> 18% up to and including 20%	0	0.00%	\$ -	0.00%
> 20%	0	0.00%	\$ -	0.00%
Total	4,329	100.00%	\$ 103,056,383	100.00%

