



FP Turbo Series 2016-1 Trust as at 31 October 2018

Portfolio Summary	
Portfolio size	\$ 133,350,298.88
Number of contracts	5,327
Number of obligors	726
Weighted average yield (p.a.)	10.60%
Average contract balance (current)	\$ 25,032.91
Maximum contract balance (current)	\$ 203,438.80
Average contract balance (original)	\$ 46,854.98
Maximum contract balance (original)	\$ 487,571.03
Weighted average total contract term (months)	52.66
Weighted average seasoning (months)	38.29
Weighted average remaining term (months)	14.38
Maximum remaining term (months)	60.03
Weighted average residual (current)	62.30%
Weighted average residual (original)	33.52%
Weighted average balloon percentage	71.58%
Balloon payments contract balance	\$ 131,447,440.83
Balloon payments contract count	5,294
Balloon payments value	\$ 95,448,222.18
Maximum balloon payment	\$ 189,486.36
Maximum contract balance	\$ 203,438.80

Top 10 Obligor

Customer Code	Number of Contracts	(%) Number of Contracts	Receivables Outstanding	(%) Receivables Outstanding
AAN0481	395	7.42%	\$ 9,121,442	6.84%
ARO0130	84	1.58%	\$ 6,457,768	4.84%
ARI0248	324	6.08%	\$ 5,757,367	4.32%
AAG0025	203	3.81%	\$ 5,444,666	4.08%
AMU0167	116	2.18%	\$ 5,436,374	4.08%
ATE0041	263	4.94%	\$ 5,194,595	3.90%
ASP0122	28	0.53%	\$ 3,221,421	2.42%
ATS0013	150	2.82%	\$ 3,213,630	2.41%
ARA0071	42	0.79%	\$ 2,155,124	1.62%
AGI0035	76	1.43%	\$ 2,114,923	1.59%
Total	1,681	31.56%	\$ 48,117,310	36.08%

Top 10 Contract Balance

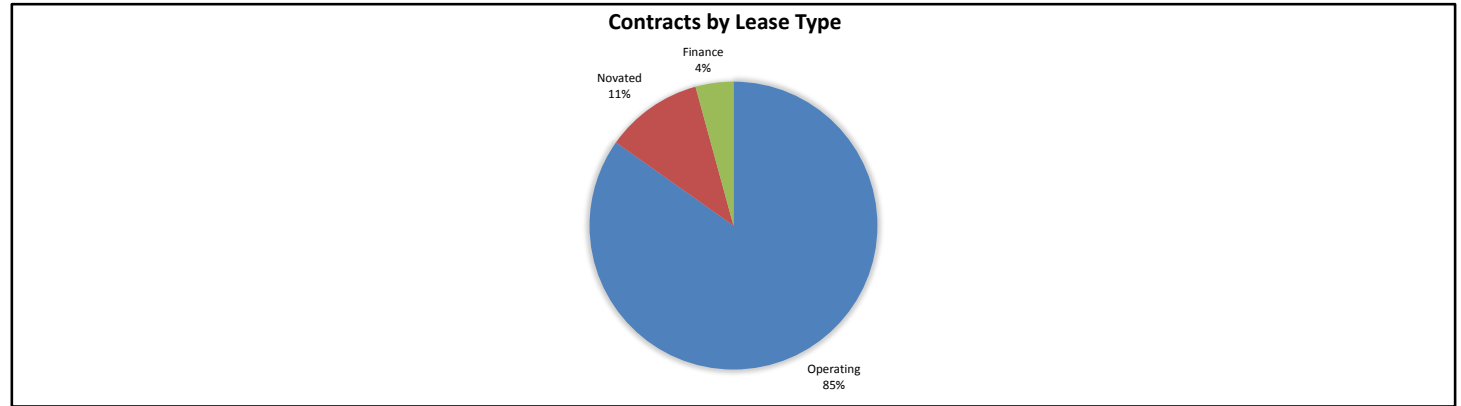
	Receivables Outstanding
1st Decile Upper Limit	\$ 203,439
2nd Decile Upper Limit	\$ 203,267
3rd Decile Upper Limit	\$ 198,159
4th Decile Upper Limit	\$ 197,777
5th Decile Upper Limit	\$ 195,970
6th Decile Upper Limit	\$ 194,709
7th Decile Upper Limit	\$ 192,690
8th Decile Upper Limit	\$ 192,254
9th Decile Upper Limit	\$ 188,776
10th Decile Upper Limit	\$ 188,306

Top 10 Contract Aggregate Balance

	Receivables Outstanding
Aggregate Balance- 1st Decile	\$ 595,578
Aggregate Balance- 2nd Decile	\$ 397,800
Aggregate Balance- 3rd Decile	\$ 206,634
Aggregate Balance- 4th Decile	\$ 206,104
Aggregate Balance- 5th Decile	\$ 206,031
Aggregate Balance- 6th Decile	\$ 205,920
Aggregate Balance- 7th Decile	\$ 205,623
Aggregate Balance- 8th Decile	\$ 204,838
Aggregate Balance- 9th Decile	\$ 203,697
Aggregate Balance- 10th Decile	\$ 203,544
Total	\$ 2,635,768

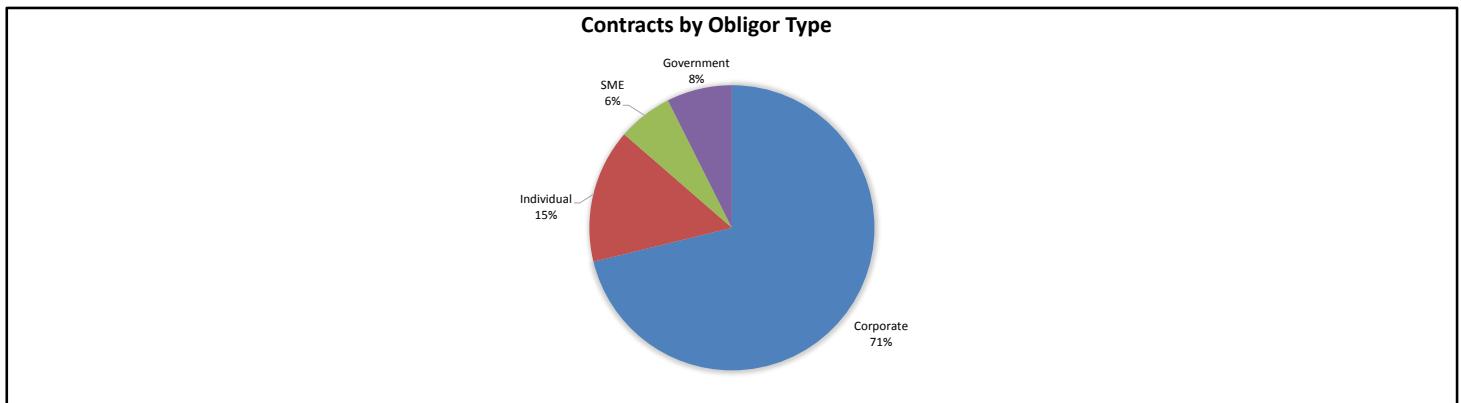
Contracts by Lease Type

Lease Type	Number of Contracts	(%) Number of Contracts	Receivables Outstanding	(%) Receivables Outstanding
Operating	4,527	84.98%	\$ 113,080,548	84.80%
Novated	548	10.29%	\$ 14,597,659	10.95%
Finance	252	4.73%	\$ 5,672,091	4.25%
Total	5,327	100.00%	\$ 133,350,299	100.00%



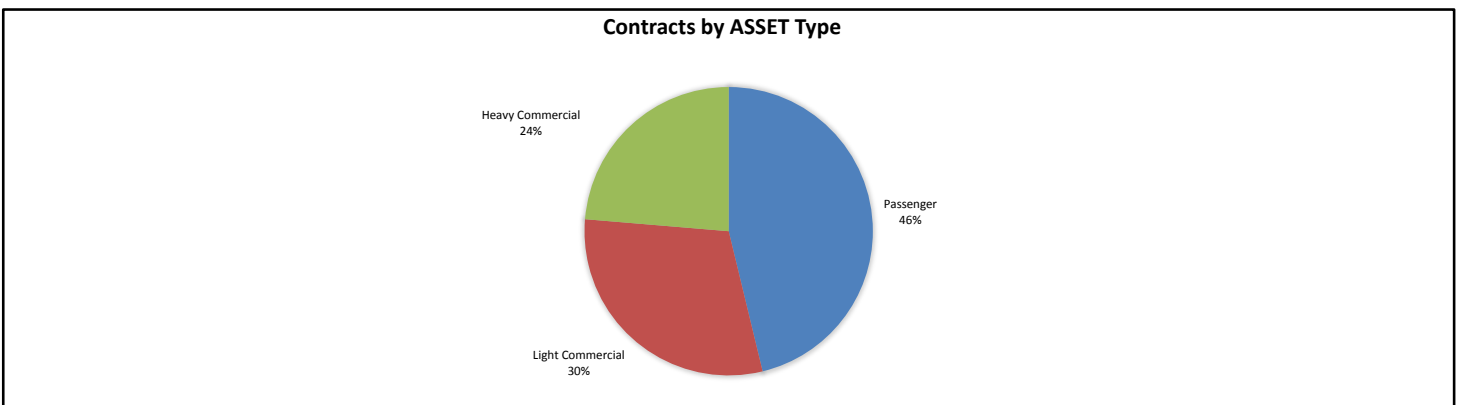
Contracts by Obligor Type

Obligor Type	Number of Contracts	(%) Number of Contracts	Receivables Outstanding	(%) Receivables Outstanding
Corporate	3,888	72.99%	\$ 94,914,396	71.18%
Individual	800	15.02%	\$ 20,269,751	15.20%
SME	446	8.37%	\$ 8,282,059	6.21%
Government	193	3.62%	\$ 9,884,093	7.41%
Total	5,327	100.00%	\$ 133,350,299	100.00%



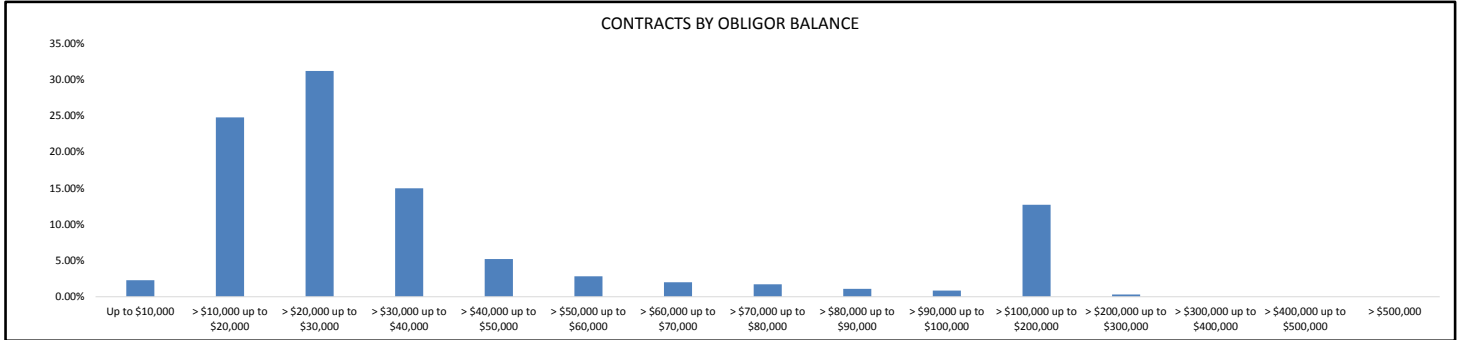
Contracts by Asset Type

Asset Type	Number of Contracts	(%) Number of Contracts	Receivables Outstanding	(%) Receivables Outstanding
Passenger	3,162	59.36%	\$ 61,630,445	46.22%
Light Commercial	1,689	31.71%	\$ 40,154,245	30.11%
Heavy Commercial	476	8.94%	\$ 31,565,609	23.67%
Total	5,327	100.00%	\$ 133,350,299	100.00%



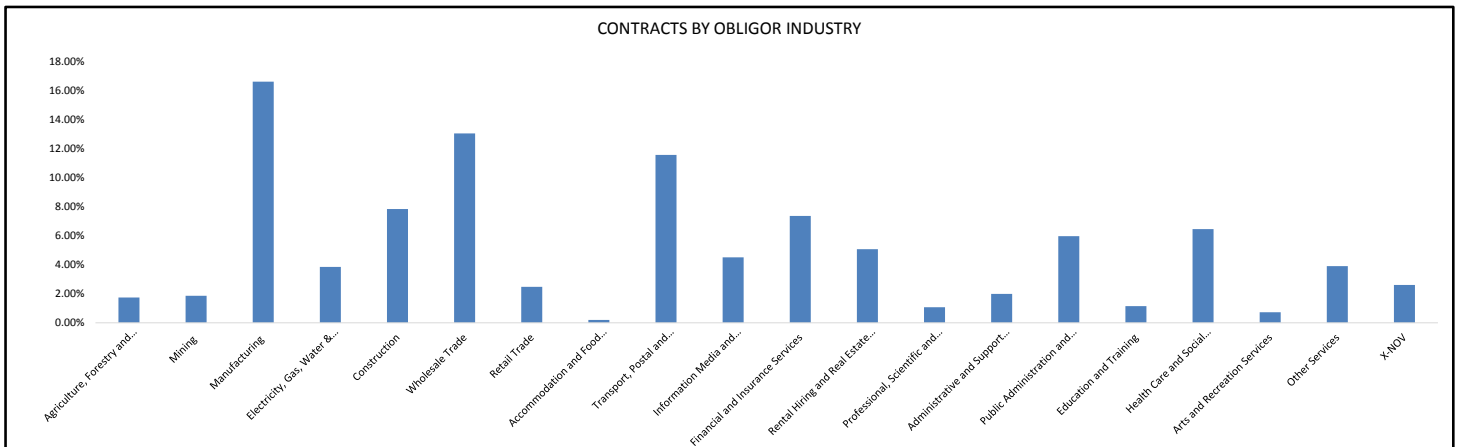
Contracts by Obligor Balance

Obligor Balance	Number of Contracts	(%) Number of Contracts	Receivables Outstanding	(%) Receivables Outstanding
Up to \$10,000	407	7.64%	\$ 3,055,573	2.29%
> \$10,000 up to \$20,000	2,186	41.04%	\$ 33,061,137	24.79%
> \$20,000 up to \$30,000	1,700	31.91%	\$ 41,596,088	31.19%
> \$30,000 up to \$40,000	582	10.93%	\$ 19,997,265	15.00%
> \$40,000 up to \$50,000	159	2.98%	\$ 6,952,749	5.21%
> \$50,000 up to \$60,000	69	1.30%	\$ 3,762,064	2.82%
> \$60,000 up to \$70,000	41	0.77%	\$ 2,670,975	2.00%
> \$70,000 up to \$80,000	31	0.58%	\$ 2,301,787	1.73%
> \$80,000 up to \$90,000	17	0.32%	\$ 1,452,300	1.09%
> \$90,000 up to \$100,000	12	0.23%	\$ 1,131,407	0.85%
> \$100,000 up to \$200,000	121	2.27%	\$ 16,962,251	12.72%
> \$200,000 up to \$300,000	2	0.04%	\$ 406,705	0.30%
> \$300,000 up to \$400,000	0	0.00%	\$ -	0.00%
> \$400,000 up to \$500,000	0	0.00%	\$ -	0.00%
> \$500,000	0	0.00%	\$ -	0.00%
Total	5,327	100.00%	\$ 133,350,299	100.00%



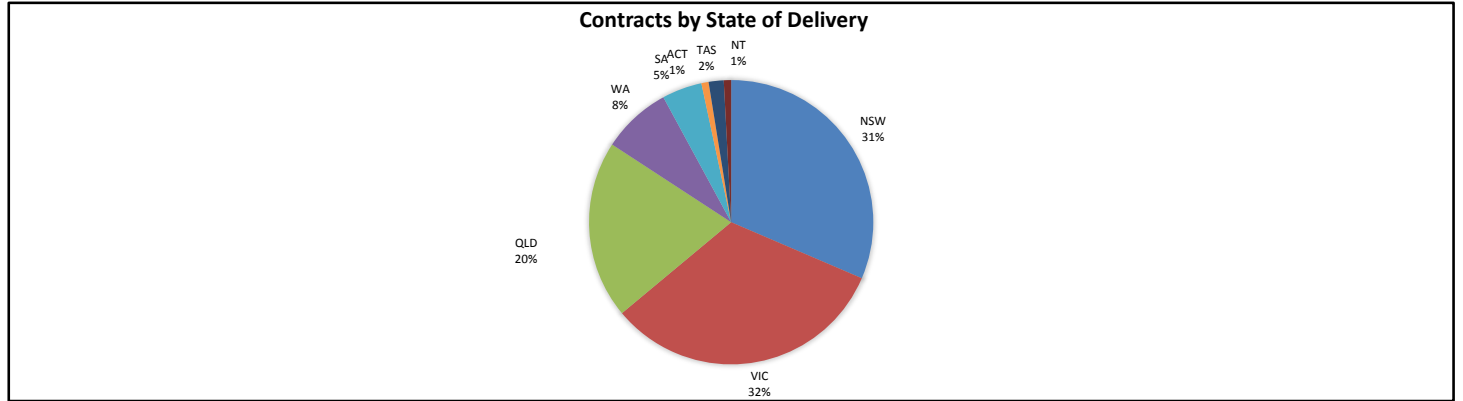
Contracts by Obligor Industry

Obligor Industry	Number of Contracts	(%) Number of Contracts	Receivables Outstanding	(%) Receivables Outstanding
ANZSIC Industry Division: Agriculture, Forestry and Fishing	95	1.78%	\$ 2,319,009	1.74%
ANZSIC Industry Division: Mining	85	1.60%	\$ 2,484,262	1.86%
ANZSIC Industry Division: Manufacturing	812	15.24%	\$ 22,158,798	16.62%
ANZSIC Industry Division: Electricity, Gas, Water and Waste Services	240	4.51%	\$ 5,138,226	3.85%
ANZSIC Industry Division: Construction	441	8.28%	\$ 10,447,222	7.83%
ANZSIC Industry Division: Wholesale Trade	730	13.70%	\$ 17,394,132	13.04%
ANZSIC Industry Division: Retail Trade	161	3.02%	\$ 3,300,078	2.47%
ANZSIC Industry Division: Accommodation and Food Services	13	0.24%	\$ 261,628	0.20%
ANZSIC Industry Division: Transport, Postal and Warehousing	296	5.56%	\$ 15,418,265	11.56%
ANZSIC Industry Division: Information Media and Telecommunications	292	5.48%	\$ 6,016,836	4.51%
ANZSIC Industry Division: Financial and Insurance Services	428	8.03%	\$ 9,824,584	7.37%
ANZSIC Industry Division: Rental, Hiring and Real Estate Services	372	6.98%	\$ 6,758,431	5.07%
ANZSIC Industry Division: Professional, Scientific and Technical Services	62	1.16%	\$ 1,430,478	1.07%
ANZSIC Industry Division: Administrative and Support Services	129	2.42%	\$ 2,659,793	1.99%
ANZSIC Industry Division: Public Administration and Safety	165	3.10%	\$ 7,953,263	5.96%
ANZSIC Industry Division: Education and Training	65	1.22%	\$ 1,528,713	1.15%
ANZSIC Industry Division: Health Care and Social Assistance	503	9.44%	\$ 8,602,375	6.45%
ANZSIC Industry Division: Arts and Recreational Services	57	1.07%	\$ 969,865	0.73%
Other Services	229	4.30%	\$ 5,207,393	3.91%
X-NOV	152	2.85%	\$ 3,476,948	2.61%
Total	5,327	100.00%	\$ 133,350,299	100.00%



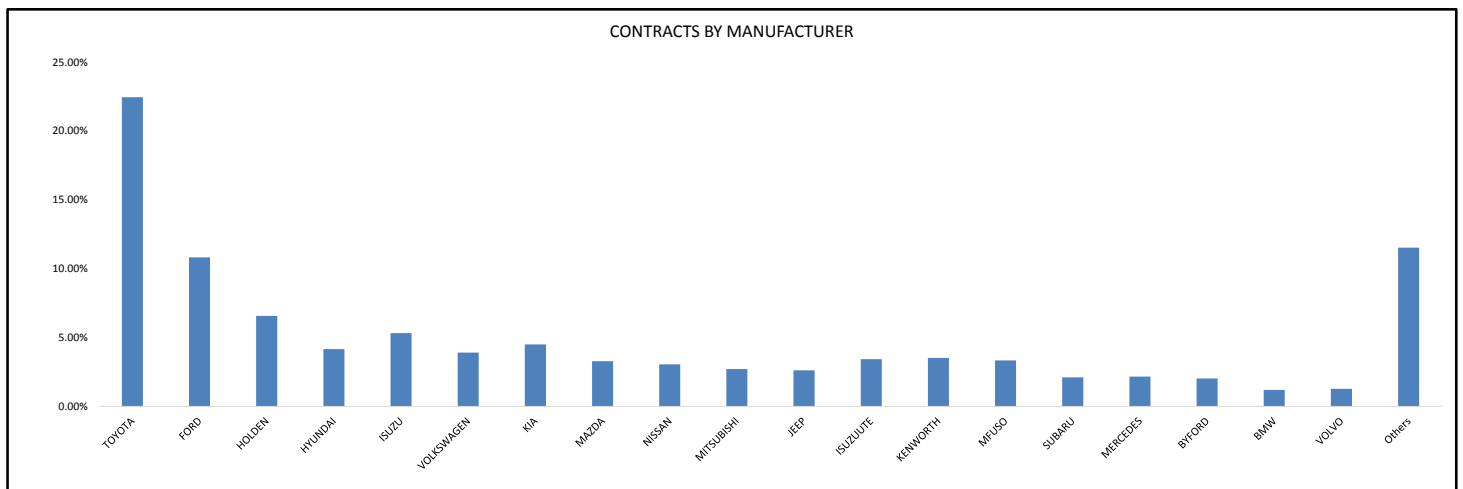
Contracts by State of Delivery

State of Delivery	Number of Contracts	(%) Number of Contracts	Receivables Outstanding	(%) Receivables Outstanding
NSW	1,529	28.70%	\$ 41,937,060	31.45%
VIC	1,742	32.70%	\$ 43,336,107	32.50%
QLD	1,109	20.82%	\$ 27,010,639	20.26%
WA	482	9.05%	\$ 10,511,088	7.88%
SA	271	5.09%	\$ 6,067,863	4.55%
ACT	46	0.86%	\$ 1,093,220	0.82%
TAS	103	1.93%	\$ 2,282,970	1.71%
NT	45	0.84%	\$ 1,111,351	0.83%
Total	5,327	100.00%	\$ 133,350,299	100.00%



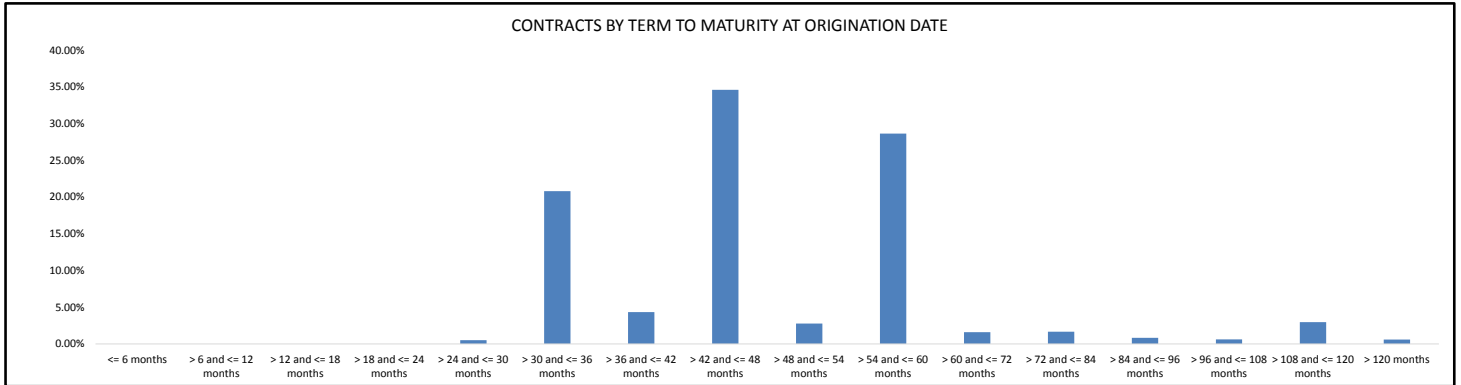
Contracts by Manufacturer

Manufacturer	Number of Contracts	(%) Number of Contracts	Receivables Outstanding	(%) Receivables Outstanding
TOYOTA	1,321	24.80%	\$ 29,940,226	22.45%
FORD	676	12.69%	\$ 14,436,622	10.83%
HOLDEN	489	9.18%	\$ 8,769,771	6.58%
HYUNDAI	340	6.38%	\$ 5,547,719	4.16%
ISUZU	123	2.31%	\$ 7,088,456	5.32%
VOLKSWAGEN	264	4.96%	\$ 5,214,138	3.91%
KIA	340	6.38%	\$ 6,005,028	4.50%
MAZDA	226	4.24%	\$ 4,376,014	3.28%
NISSAN	224	4.20%	\$ 4,066,944	3.05%
MITSUBISHI	184	3.45%	\$ 3,610,778	2.71%
JEEP	145	2.72%	\$ 3,500,205	2.62%
ISUZUUTE	183	3.44%	\$ 4,578,707	3.43%
KENWORTH	29	0.54%	\$ 4,699,709	3.52%
MFUSO	88	1.65%	\$ 4,450,550	3.34%
SUBARU	139	2.61%	\$ 2,814,325	2.11%
MERCEDES	71	1.33%	\$ 2,884,609	2.16%
BYFORD	21	0.39%	\$ 2,701,938	2.03%
BMW	40	0.75%	\$ 1,595,184	1.20%
VOLVO	23	0.43%	\$ 1,693,961	1.27%
Others	401	7.53%	\$ 15,375,416	11.53%
Total	5,327	100.00%	\$ 133,350,299	100.00%



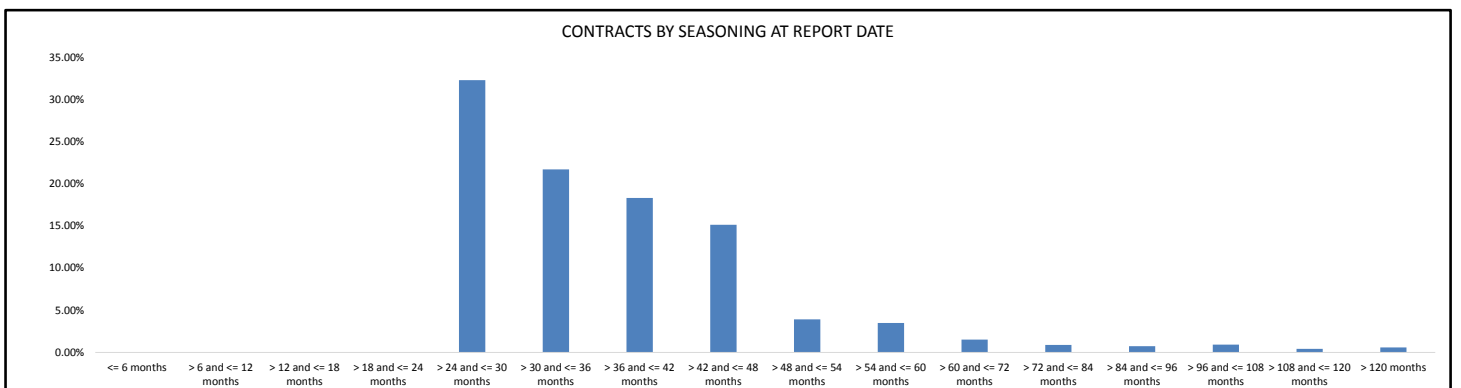
Contracts by Term to Maturity at Origination Date

Term to Maturity at Origination Date	Number of Contracts	(%) Number of Contracts	Receivables Outstanding	(%) Receivables Outstanding
<= 6 months	0	0.00%	\$ -	0.00%
> 6 and <= 12 months	0	0.00%	\$ -	0.00%
> 12 and <= 18 months	0	0.00%	\$ -	0.00%
> 18 and <= 24 months	0	0.00%	\$ -	0.00%
> 24 and <= 30 months	41	0.77%	\$ 676,741	0.51%
> 30 and <= 36 months	1,346	25.27%	\$ 27,756,051	20.81%
> 36 and <= 42 months	316	5.93%	\$ 5,777,011	4.33%
> 42 and <= 48 months	2,046	38.41%	\$ 46,164,617	34.62%
> 48 and <= 54 months	246	4.62%	\$ 3,713,933	2.79%
> 54 and <= 60 months	1,105	20.74%	\$ 38,222,121	28.66%
> 60 and <= 72 months	69	1.30%	\$ 2,148,596	1.61%
> 72 and <= 84 months	50	0.94%	\$ 2,210,158	1.66%
> 84 and <= 96 months	23	0.43%	\$ 1,115,506	0.84%
> 96 and <= 108 months	19	0.36%	\$ 821,518	0.62%
> 108 and <= 120 months	44	0.83%	\$ 3,951,167	2.96%
> 120 months	22	0.41%	\$ 792,881	0.59%
Total	5,327	100.00%	\$ 133,350,299	100.00%



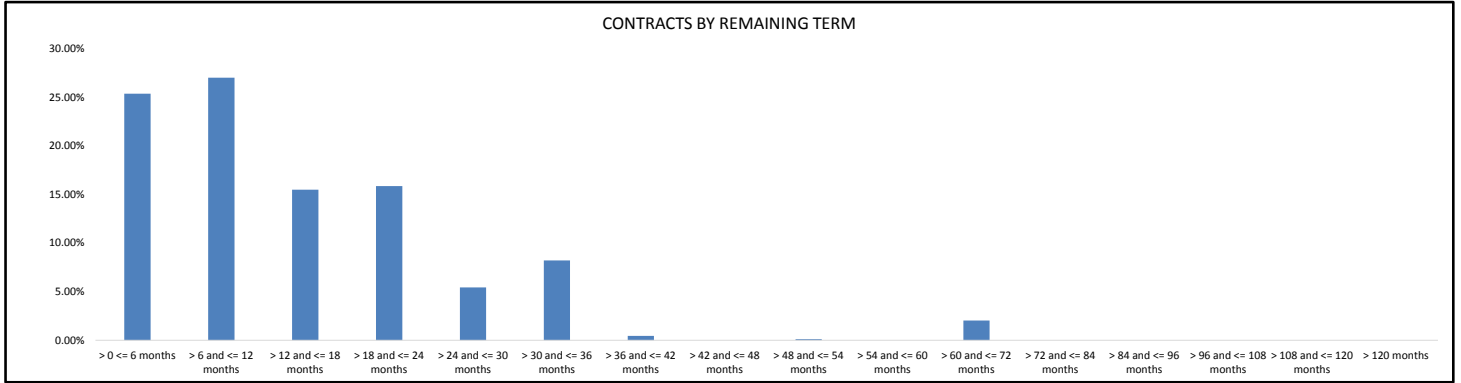
Contracts by Seasoning at Report Date

Seasoning at Report Date	Number of Contracts	(%) Number of Contracts	Receivables Outstanding	(%) Receivables Outstanding
<= 6 months	0	0.00%	\$ -	0.00%
> 6 and <= 12 months	0	0.00%	\$ -	0.00%
> 12 and <= 18 months	0	0.00%	\$ -	0.00%
> 18 and <= 24 months	0	0.00%	\$ -	0.00%
> 24 and <= 30 months	1,520	28.53%	\$ 43,063,616	32.29%
> 30 and <= 36 months	1,254	23.54%	\$ 28,960,824	21.72%
> 36 and <= 42 months	1,098	20.61%	\$ 24,434,804	18.32%
> 42 and <= 48 months	879	16.50%	\$ 20,198,395	15.15%
> 48 and <= 54 months	285	5.35%	\$ 5,222,240	3.92%
> 54 and <= 60 months	116	2.18%	\$ 4,662,579	3.50%
> 60 and <= 72 months	57	1.07%	\$ 2,029,142	1.52%
> 72 and <= 84 months	35	0.66%	\$ 1,179,695	0.88%
> 84 and <= 96 months	25	0.47%	\$ 986,198	0.74%
> 96 and <= 108 months	23	0.43%	\$ 1,242,032	0.93%
> 108 and <= 120 months	13	0.24%	\$ 577,893	0.43%
> 120 months	22	0.41%	\$ 792,881	0.59%
Total	5,327	100.00%	\$ 133,350,299	100.00%



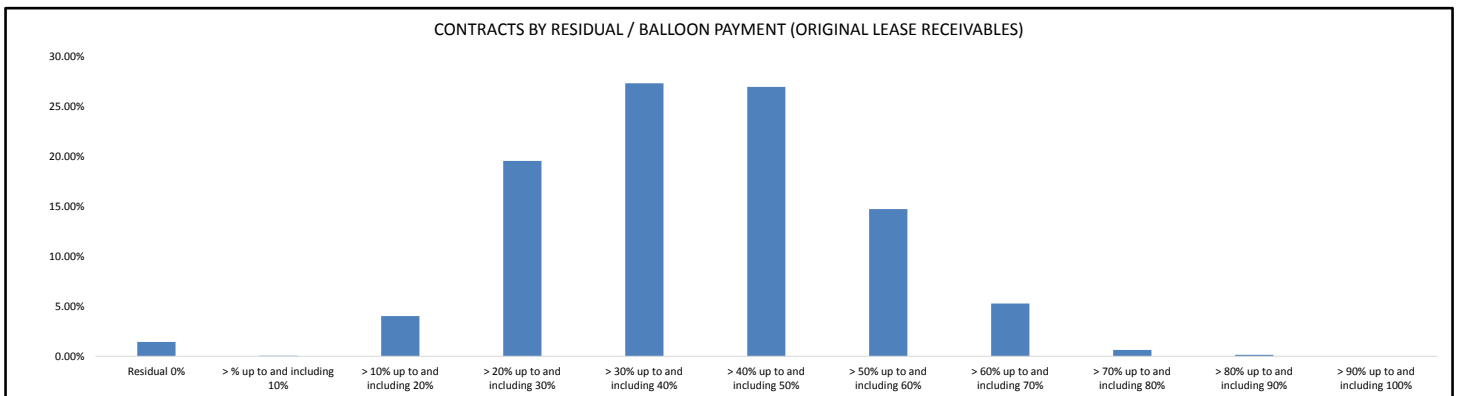
Contracts by Remaining Term

Remaining Term	Number of Contracts	(%) Number of Contracts	Receivables Outstanding	(%) Receivables Outstanding
> 0 <= 6 months	1,868	35.07%	\$ 33,842,643	25.38%
> 6 and <= 12 months	1,590	29.85%	\$ 36,035,979	27.02%
> 12 and <= 18 months	745	13.99%	\$ 20,668,468	15.50%
> 18 and <= 24 months	674	12.65%	\$ 21,152,164	15.86%
> 24 and <= 30 months	186	3.49%	\$ 7,256,647	5.44%
> 30 and <= 36 months	239	4.49%	\$ 10,953,777	8.21%
> 36 and <= 42 months	3	0.06%	\$ 591,905	0.44%
> 42 and <= 48 months	0	0.00%	\$ -	0.00%
> 48 and <= 54 months	1	0.02%	\$ 146,777	0.11%
> 54 and <= 60 months	0	0.00%	\$ -	0.00%
> 60 and <= 72 months	21	0.39%	\$ 2,701,938	2.03%
> 72 and <= 84 months	0	0.00%	\$ -	0.00%
> 84 and <= 96 months	0	0.00%	\$ -	0.00%
> 96 and <= 108 months	0	0.00%	\$ -	0.00%
> 108 and <= 120 months	0	0.00%	\$ -	0.00%
> 120 months	0	0.00%	\$ -	0.00%
Total	5,327	100.00%	\$ 133,350,299	100.00%



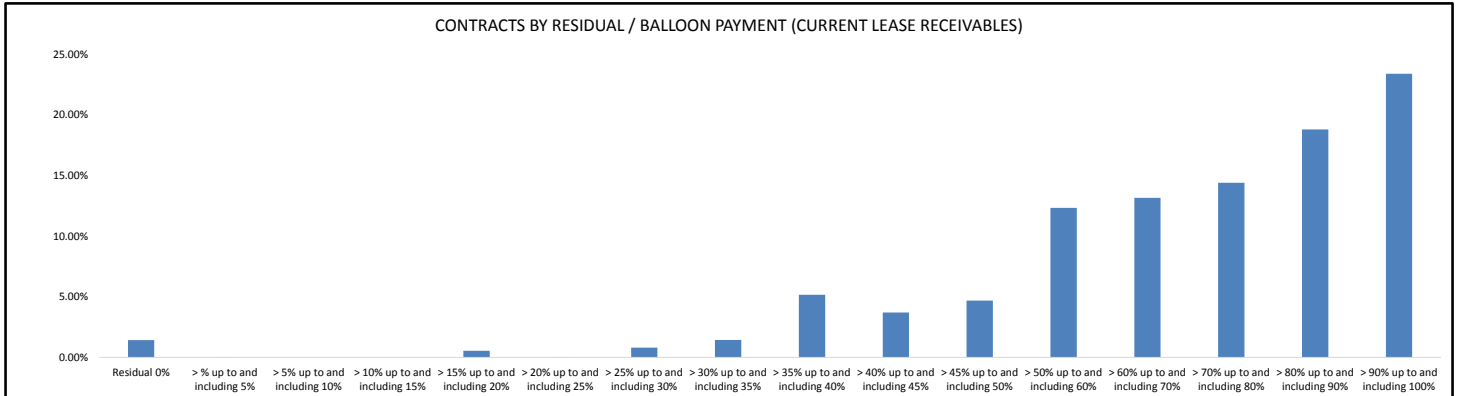
Contracts by Residual/Balloon Payment (Original Lease Receivables)

Residual/Balloon Payment (Original Lease Receivables)	Number of Contracts	(%) Number of Contracts	Receivables Outstanding	(%) Receivables Outstanding
Residual 0%	16	0.30%	\$ 1,902,010	1.43%
> % up to and including 10%	9	0.17%	\$ 61,970	0.05%
> 10% up to and including 20%	179	3.36%	\$ 5,361,906	4.02%
> 20% up to and including 30%	826	15.51%	\$ 26,051,840	19.54%
> 30% up to and including 40%	1,418	26.62%	\$ 36,382,936	27.28%
> 40% up to and including 50%	1,617	30.35%	\$ 35,908,565	26.93%
> 50% up to and including 60%	929	17.44%	\$ 19,613,408	14.71%
> 60% up to and including 70%	291	5.46%	\$ 7,025,151	5.27%
> 70% up to and including 80%	34	0.64%	\$ 849,686	0.64%
> 80% up to and including 90%	8	0.15%	\$ 192,825	0.14%
> 90% up to and including 100%	0	0.00%	\$ -	0.00%
Total	5,327	100.00%	\$ 133,350,299	100.00%



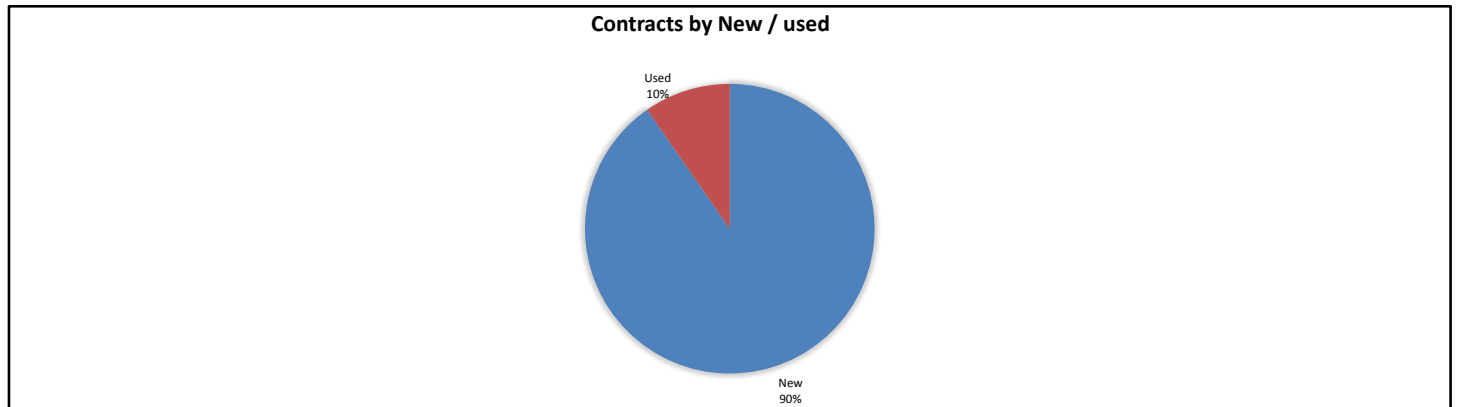
Contracts by Residual/Balloon Payment (Current Lease Receivables)

Residual/Balloon Payment (Current Lease Receivables)	Number of Contracts	(%) Number of Contracts	Receivables Outstanding	(%) Receivables Outstanding
Residual 0%	33	0.62%	\$ 1,902,858	1.43%
> % up to and including 5%	5	0.09%	\$ 37,865	0.03%
> 5% up to and including 10%	1	0.02%	\$ 4,565	0.00%
> 10% up to and including 15%	1	0.02%	\$ 18,487	0.01%
> 15% up to and including 20%	5	0.09%	\$ 728,086	0.55%
> 20% up to and including 25%	2	0.04%	\$ 28,824	0.02%
> 25% up to and including 30%	22	0.41%	\$ 1,076,384	0.81%
> 30% up to and including 35%	32	0.60%	\$ 1,926,887	1.44%
> 35% up to and including 40%	163	3.06%	\$ 6,884,577	5.16%
> 40% up to and including 45%	150	2.82%	\$ 4,938,904	3.70%
> 45% up to and including 50%	202	3.79%	\$ 6,250,334	4.69%
> 50% up to and including 60%	500	9.39%	\$ 16,458,695	12.34%
> 60% up to and including 70%	657	12.33%	\$ 17,564,044	13.17%
> 70% up to and including 80%	792	14.87%	\$ 19,223,686	14.42%
> 80% up to and including 90%	1,180	22.15%	\$ 25,092,459	18.82%
> 90% up to and including 100%	1,582	29.70%	\$ 31,213,644	23.41%
Total	5,327	100.00%	\$ 133,350,299	100.00%



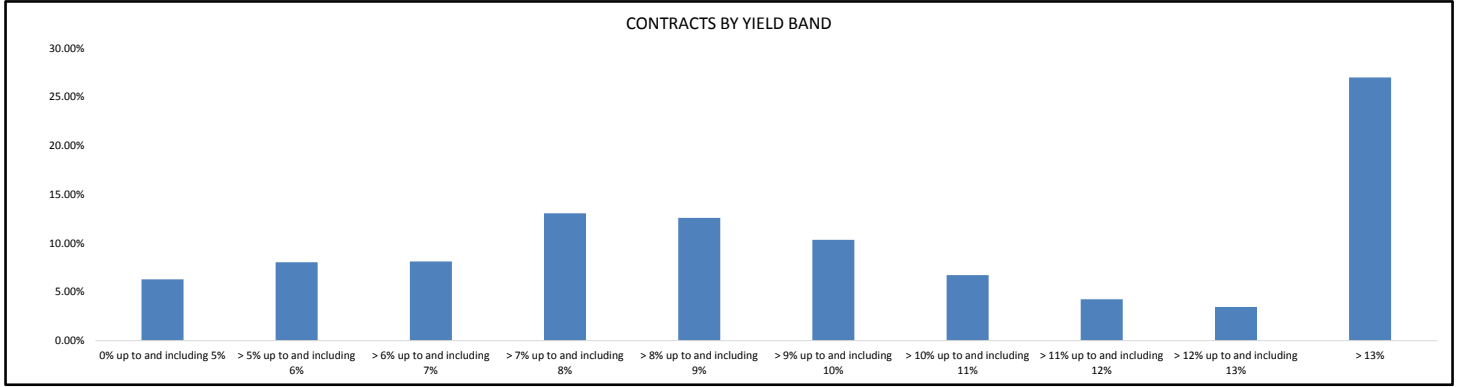
Contracts by New / Used

New / Used	Number of Contracts	(%) Number of Contracts	Receivables Outstanding	(%) Receivables Outstanding
New	4,953	92.98%	\$ 120,456,079	90.33%
Used	374	7.02%	\$ 12,894,220	9.67%
Total	5,327	100.00%	\$ 133,350,299	100.00%



Contracts by Yield Band

Yield Band	Number of Contracts	(%) Number of Contracts	Receivables Outstanding	(%) Receivables Outstanding
0% up to and including 5%	401	7.53%	\$ 8,395,122	6.30%
> 5% up to and including 6%	318	5.97%	\$ 10,740,972	8.05%
> 6% up to and including 7%	352	6.61%	\$ 10,849,782	8.14%
> 7% up to and including 8%	483	9.07%	\$ 17,444,939	13.08%
> 8% up to and including 9%	590	11.08%	\$ 16,815,542	12.61%
> 9% up to and including 10%	606	11.38%	\$ 13,814,379	10.36%
> 10% up to and including 11%	403	7.57%	\$ 8,981,237	6.74%
> 11% up to and including 12%	298	5.59%	\$ 5,657,624	4.24%
> 12% up to and including 13%	235	4.41%	\$ 4,615,772	3.46%
> 13%	1,641	30.81%	\$ 36,034,929	27.02%
Total	5,327	100.00%	\$ 133,350,299	100.00%



Contracts by Interest Rate

Interest Rate	Number of Contracts	(%) Number of Contracts	Receivables Outstanding	(%) Receivables Outstanding
0%	0	0.00%	\$ -	0.00%
> 0% up to and including 2%	0	0.00%	\$ -	0.00%
> 2% up to and including 4%	137	2.57%	\$ 2,748,968	2.06%
> 4% up to and including 6%	1,031	19.35%	\$ 29,061,383	21.79%
> 6% up to and including 8%	3,510	65.89%	\$ 84,628,423	63.46%
> 8% up to and including 10%	560	10.51%	\$ 13,872,188	10.40%
> 10% up to and including 12%	68	1.28%	\$ 1,840,551	1.38%
> 12% up to and including 14%	18	0.34%	\$ 1,105,248	0.83%
> 14% up to and including 16%	3	0.06%	\$ 93,538	0.07%
> 16% up to and including 18%	0	0.00%	\$ -	0.00%
> 18% up to and including 20%	0	0.00%	\$ -	0.00%
> 20%	0	0.00%	\$ -	0.00%
Total	5,327	100.00%	\$ 133,350,299	100.00%

