



**FP Turbo Series 2016-1 Trust as at 31 December 2018**

Portfolio Summary	
Portfolio size	\$ 122,012,370.39
Number of contracts	4,985
Number of obligors	689
Weighted average yield (p.a.)	10.96%
Average contract balance (current)	\$ 24,475.90
Maximum contract balance (current)	\$ 201,639.35
Average contract balance (original)	\$ 47,257.24
Maximum contract balance (original)	\$ 487,571.03
Weighted average total contract term (months)	53.22
Weighted average seasoning (months)	39.95
Weighted average remaining term (months)	13.27
Maximum remaining term (months)	58.03
Weighted average residual (current)	63.87%
Weighted average residual (original)	33.47%
Weighted average balloon percentage	73.20%
Balloon payments contract balance	\$ 120,167,378.90
Balloon payments contract count	4,952
Balloon payments value	\$ 89,311,024.34
Maximum balloon payment	\$ 189,486.36
Maximum contract balance	\$ 201,639.35

**Top 10 Obligor**

Customer Code	Number of Contracts	(%) Number of Contracts	Receivables Outstanding	(%) Receivables Outstanding
AAN0481	362	7.26%	\$ 8,132,406	6.67%
ARO0130	84	1.69%	\$ 6,155,285	5.04%
ARI0248	320	6.42%	\$ 5,485,767	4.50%
AMU0167	116	2.33%	\$ 5,237,617	4.29%
AAG0025	185	3.71%	\$ 4,914,306	4.03%
ATE0041	244	4.89%	\$ 4,650,979	3.81%
ATS0013	150	3.01%	\$ 3,090,452	2.53%
ASP0122	28	0.56%	\$ 3,059,489	2.51%
AGI0035	76	1.52%	\$ 2,018,859	1.65%
ARA0071	38	0.76%	\$ 1,956,884	1.60%
<b>Total</b>	<b>1,603</b>	<b>32.16%</b>	<b>\$ 44,702,044</b>	<b>36.64%</b>

**Top 10 Contract Balance**

	Receivables Outstanding
1st Decile Upper Limit	\$ 201,639
2nd Decile Upper Limit	\$ 201,475
3rd Decile Upper Limit	\$ 192,172
4th Decile Upper Limit	\$ 191,807
5th Decile Upper Limit	\$ 190,082
6th Decile Upper Limit	\$ 187,878
7th Decile Upper Limit	\$ 184,632
8th Decile Upper Limit	\$ 183,269
9th Decile Upper Limit	\$ 182,345
10th Decile Upper Limit	\$ 181,958

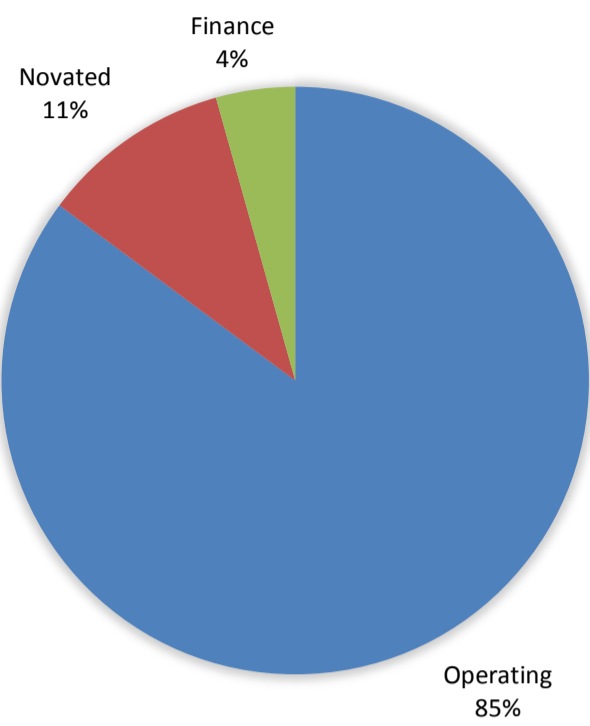
**Top 10 Contract Aggregate Balance**

	Receivables Outstanding
Aggregate Balance- 1st Decile	\$ 201,639
Aggregate Balance- 2nd Decile	\$ 201,475
Aggregate Balance- 3rd Decile	\$ 192,172
Aggregate Balance- 4th Decile	\$ 191,807
Aggregate Balance- 5th Decile	\$ 190,082
Aggregate Balance- 6th Decile	\$ 187,878
Aggregate Balance- 7th Decile	\$ 184,632
Aggregate Balance- 8th Decile	\$ 183,269
Aggregate Balance- 9th Decile	\$ 182,345
Aggregate Balance- 10th Decile	\$ 181,958
<b>Total</b>	<b>\$ 1,897,259</b>

**Contracts by Lease Type**

Lease Type	Number of Contracts	(%) Number of Contracts	Receivables Outstanding	(%) Receivables Outstanding
Operating	4,247	85.20%	\$ 103,915,984	85.17%
Novated	502	10.07%	\$ 12,783,802	10.48%
Finance	236	4.73%	\$ 5,312,584	4.35%
<b>Total</b>	<b>4,985</b>	<b>100.00%</b>	<b>\$ 122,012,370</b>	<b>100.00%</b>

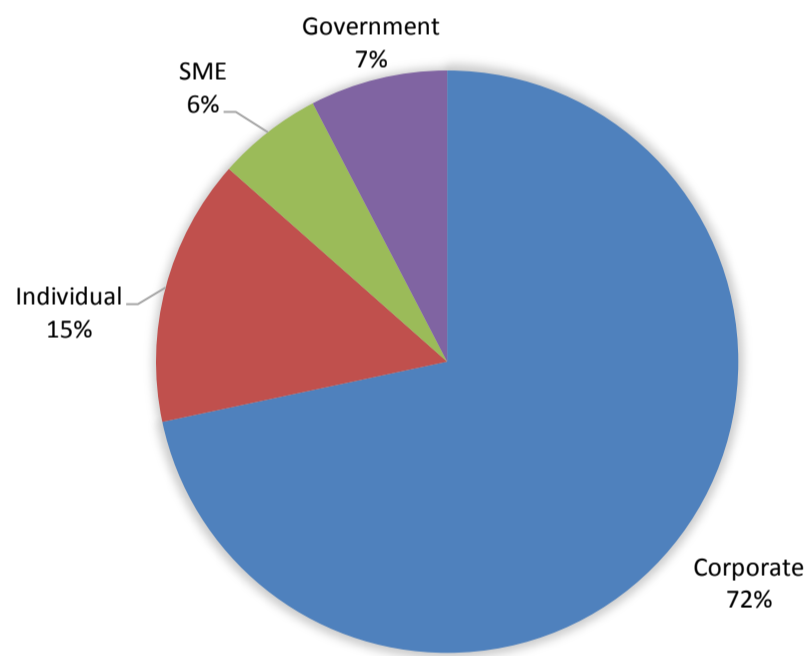
**Contracts by Lease Type**



**Contracts by Obligor Type**

Obligor Type	Number of Contracts	(%) Number of Contracts	Receivables Outstanding	(%) Receivables Outstanding
Corporate	3,669	73.60%	\$ 87,462,273	71.68%
Individual	738	14.80%	\$ 18,096,386	14.83%
SME	391	7.84%	\$ 7,141,502	5.85%
Government	187	3.75%	\$ 9,312,210	7.63%
<b>Total</b>	<b>4,985</b>	<b>100.00%</b>	<b>\$ 122,012,370</b>	<b>100.00%</b>

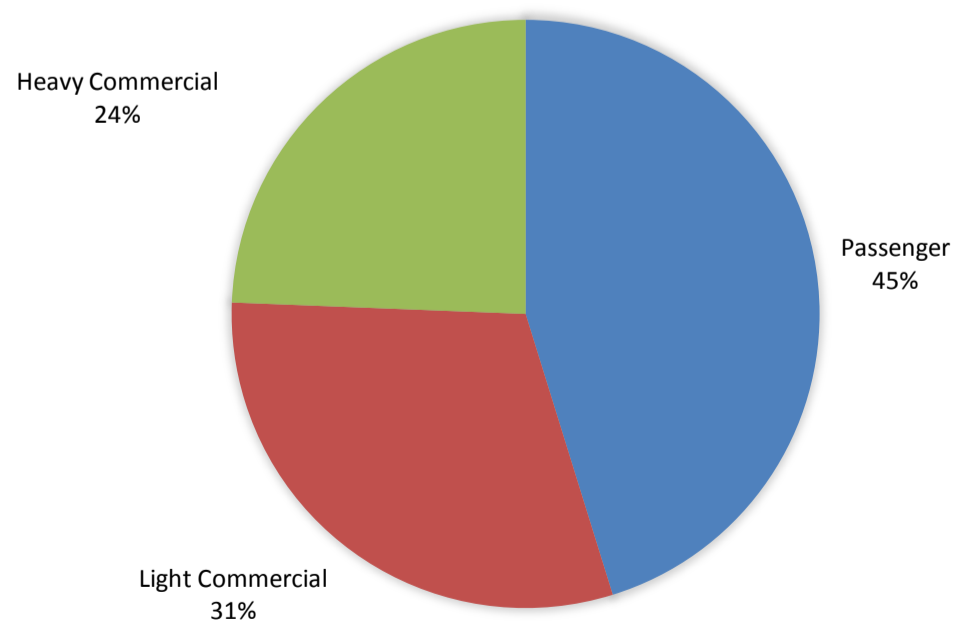
**Contracts by Obligor Type**



**Contracts by Asset Type**

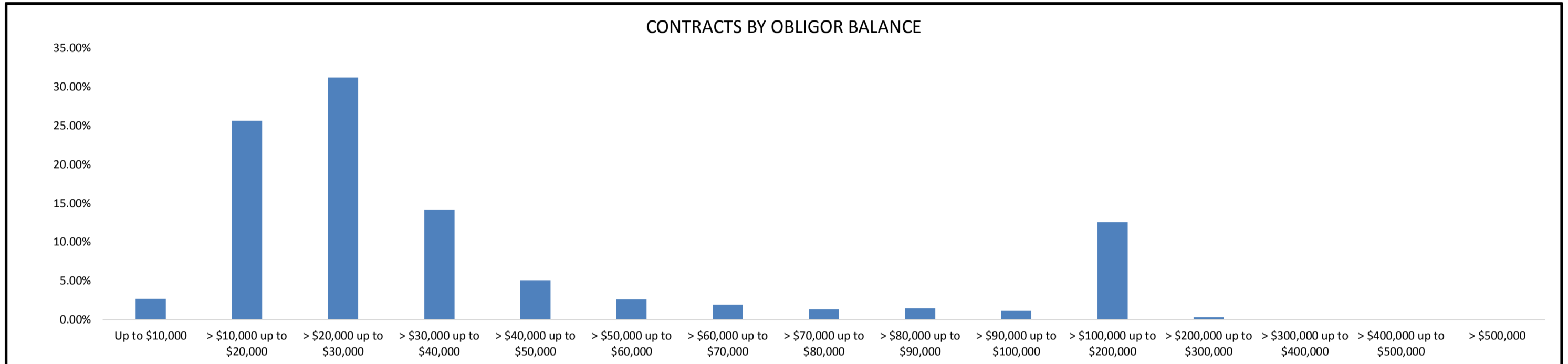
Asset Type	Number of Contracts	(%) Number of Contracts	Receivables Outstanding	(%) Receivables Outstanding
Passenger	2,914	58.46%	\$ 55,159,983	45.21%
Light Commercial	1,609	32.28%	\$ 37,105,589	30.41%
Heavy Commercial	462	9.27%	\$ 29,746,798	24.38%
<b>Total</b>	<b>4,985</b>	<b>100.00%</b>	<b>\$ 122,012,370</b>	<b>100.00%</b>

**Contracts by ASSET Type**



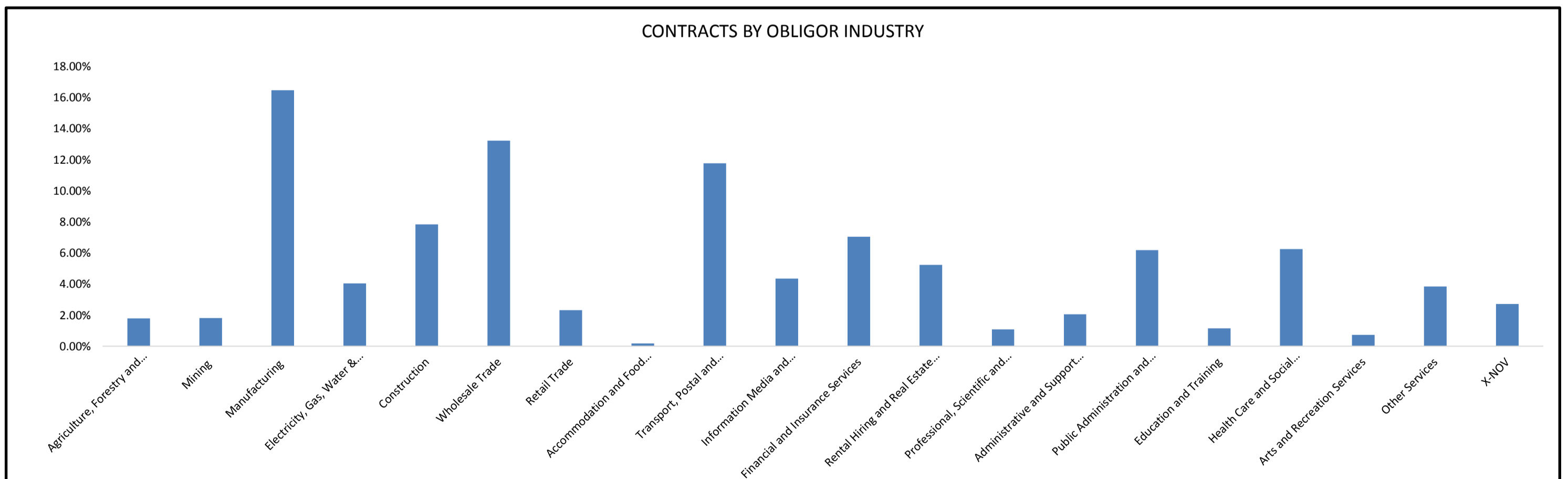
**Contracts by Obligor Balance**

Obligor Balance	Number of Contracts	(%) Number of Contracts	Receivables Outstanding	(%) Receivables Outstanding
Up to \$10,000	434	8.71%	\$ 3,250,021	2.66%
> \$10,000 up to \$20,000	2,081	41.75%	\$ 31,274,642	25.63%
> \$20,000 up to \$30,000	1,562	31.33%	\$ 38,035,558	31.17%
> \$30,000 up to \$40,000	504	10.11%	\$ 17,282,979	14.16%
> \$40,000 up to \$50,000	139	2.79%	\$ 6,105,457	5.00%
> \$50,000 up to \$60,000	59	1.18%	\$ 3,213,625	2.63%
> \$60,000 up to \$70,000	36	0.72%	\$ 2,355,426	1.93%
> \$70,000 up to \$80,000	22	0.44%	\$ 1,619,705	1.33%
> \$80,000 up to \$90,000	21	0.42%	\$ 1,791,545	1.47%
> \$90,000 up to \$100,000	14	0.28%	\$ 1,351,118	1.11%
> \$100,000 up to \$200,000	111	2.23%	\$ 15,329,180	12.56%
> \$200,000 up to \$300,000	2	0.04%	\$ 403,114	0.33%
> \$300,000 up to \$400,000	0	0.00%	\$ -	0.00%
> \$400,000 up to \$500,000	0	0.00%	\$ -	0.00%
> \$500,000	0	0.00%	\$ -	0.00%
<b>Total</b>	<b>4,985</b>	<b>100.00%</b>	<b>\$ 122,012,370</b>	<b>100.00%</b>



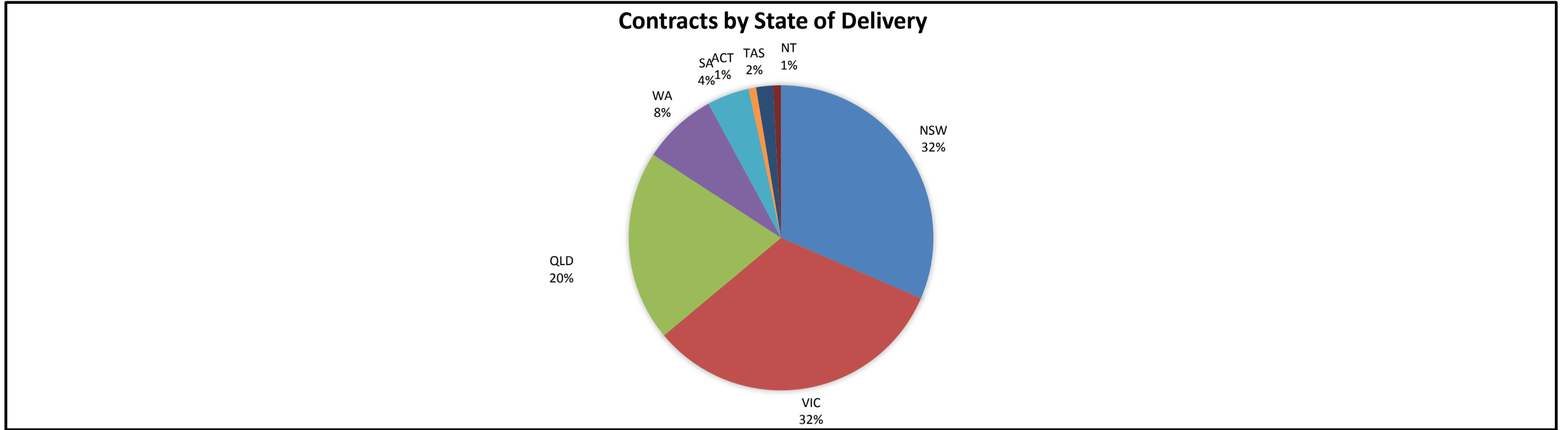
**Contracts by Obligor Industry**

Obligor Industry	Number of Contracts	(%) Number of Contracts	Receivables Outstanding	(%) Receivables Outstanding
ANZSIC Industry Division: Agriculture, Forestry and Fishing	92	1.85%	\$ 2,186,407	1.79%
ANZSIC Industry Division: Mining	78	1.56%	\$ 2,201,730	1.80%
ANZSIC Industry Division: Manufacturing	756	15.17%	\$ 20,078,443	16.46%
ANZSIC Industry Division: Electricity, Gas, Water and Waste Services	239	4.79%	\$ 4,930,803	4.04%
ANZSIC Industry Division: Construction	415	8.32%	\$ 9,568,727	7.84%
ANZSIC Industry Division: Wholesale Trade	692	13.88%	\$ 16,113,706	13.21%
ANZSIC Industry Division: Retail Trade	140	2.81%	\$ 2,820,393	2.31%
ANZSIC Industry Division: Accommodation and Food Services	11	0.22%	\$ 221,674	0.18%
ANZSIC Industry Division: Transport, Postal and Warehousing	278	5.58%	\$ 14,338,159	11.75%
ANZSIC Industry Division: Information Media and Telecommunications	269	5.40%	\$ 5,309,523	4.35%
ANZSIC Industry Division: Financial and Insurance Services	385	7.72%	\$ 8,592,113	7.04%
ANZSIC Industry Division: Rental, Hiring and Real Estate Services	365	7.32%	\$ 6,377,922	5.23%
ANZSIC Industry Division: Professional, Scientific and Technical Services	58	1.16%	\$ 1,331,979	1.09%
ANZSIC Industry Division: Administrative and Support Services	125	2.51%	\$ 2,510,322	2.06%
ANZSIC Industry Division: Public Administration and Safety	161	3.23%	\$ 7,524,959	6.17%
ANZSIC Industry Division: Education and Training	61	1.22%	\$ 1,392,019	1.14%
ANZSIC Industry Division: Health Care and Social Assistance	453	9.09%	\$ 7,615,773	6.24%
ANZSIC Industry Division: Arts and Recreational Services	56	1.12%	\$ 897,121	0.74%
Other Services	208	4.17%	\$ 4,694,340	3.85%
X-NOV	143	2.87%	\$ 3,306,254	2.71%
<b>Total</b>	<b>4,985</b>	<b>100.00%</b>	<b>\$ 122,012,370</b>	<b>100.00%</b>



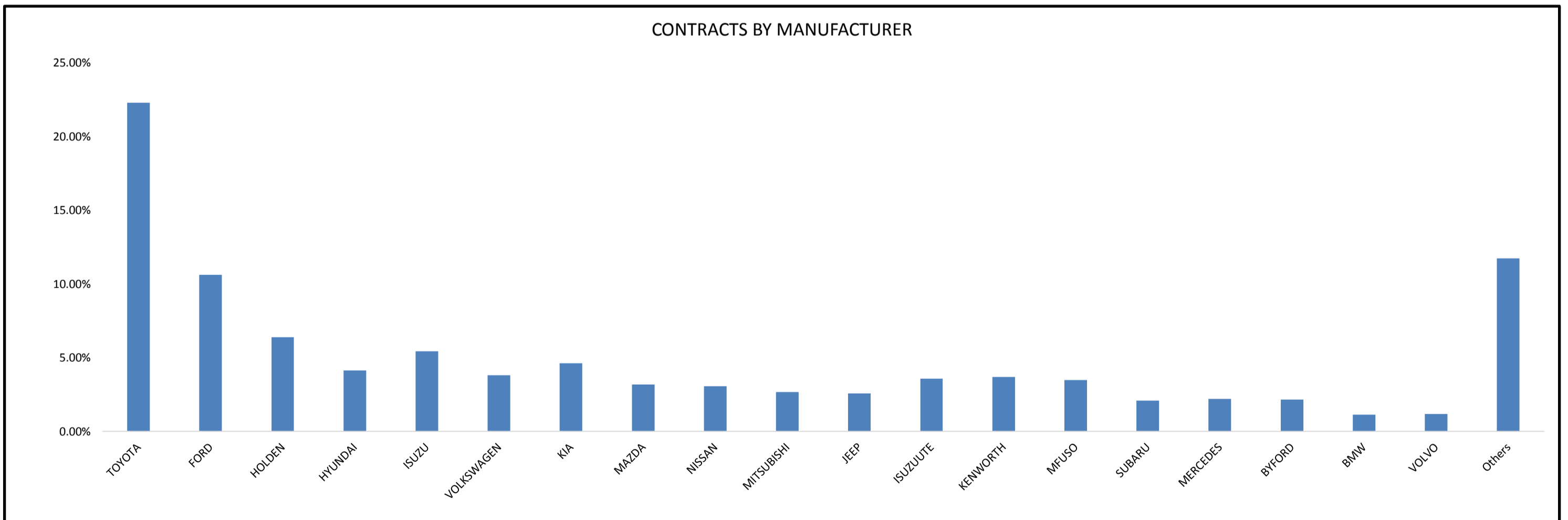
**Contracts by State of Delivery**

State of Delivery	Number of Contracts	(%) Number of Contracts	Receivables Outstanding	(%) Receivables Outstanding
NSW	1,446	29.01%	\$ 38,425,657	31.49%
VIC	1,615	32.40%	\$ 39,599,177	32.46%
QLD	1,037	20.80%	\$ 24,663,401	20.21%
WA	456	9.15%	\$ 9,682,942	7.94%
SA	244	4.89%	\$ 5,457,365	4.47%
ACT	43	0.86%	\$ 980,740	0.80%
TAS	100	2.01%	\$ 2,155,826	1.77%
NT	44	0.88%	\$ 1,047,263	0.86%
<b>Total</b>	<b>4,985</b>	<b>100.00%</b>	<b>\$ 122,012,370</b>	<b>100.00%</b>



**Contracts by Manufacturer**

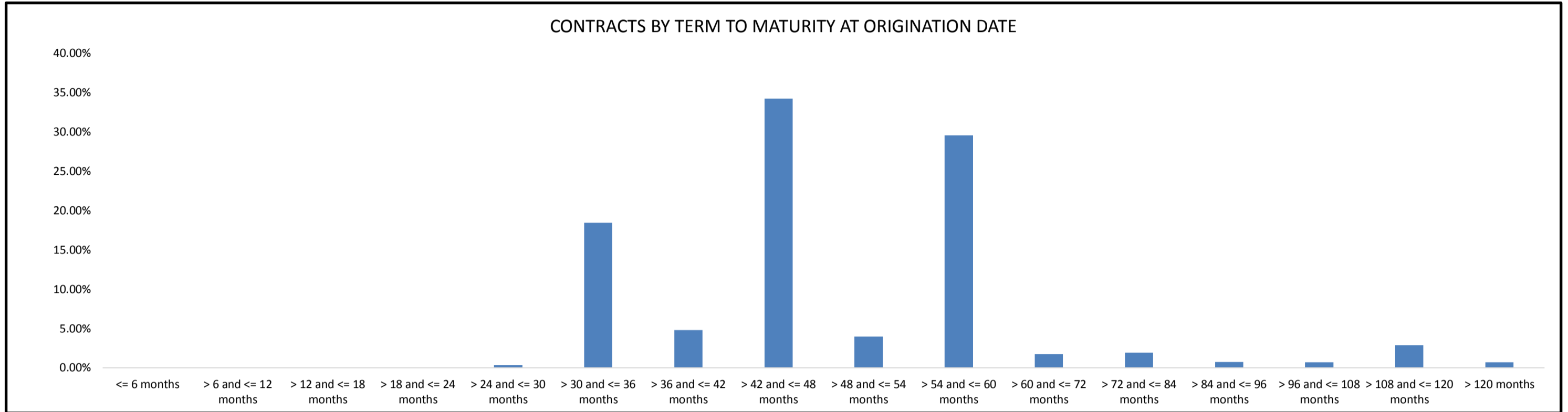
Manufacturer	Number of Contracts	(%) Number of Contracts	Receivables Outstanding	(%) Receivables Outstanding
TOYOTA	1,226	24.59%	\$ 27,188,150	22.28%
FORD	617	12.38%	\$ 12,946,545	10.61%
HOLDEN	446	8.95%	\$ 7,784,071	6.38%
HYUNDAI	325	6.52%	\$ 5,042,747	4.13%
ISUZU	119	2.39%	\$ 6,642,452	5.44%
VOLKSWAGEN	243	4.87%	\$ 4,650,956	3.81%
KIA	333	6.68%	\$ 5,646,422	4.63%
MAZDA	204	4.09%	\$ 3,879,575	3.18%
NISSAN	217	4.35%	\$ 3,743,861	3.07%
MITSUBISHI	168	3.37%	\$ 3,252,273	2.67%
JEEP	137	2.75%	\$ 3,153,010	2.58%
ISUZUUTE	181	3.63%	\$ 4,364,933	3.58%
KENWORTH	29	0.58%	\$ 4,509,701	3.70%
MFUSO	87	1.75%	\$ 4,241,964	3.48%
SUBARU	126	2.53%	\$ 2,534,788	2.08%
MERCEDES	69	1.38%	\$ 2,682,112	2.20%
BYFORD	21	0.42%	\$ 2,630,851	2.16%
BMW	37	0.74%	\$ 1,368,546	1.12%
VOLVO	20	0.40%	\$ 1,430,088	1.17%
Others	380	7.62%	\$ 14,319,324	11.74%
<b>Total</b>	<b>4,985</b>	<b>100.00%</b>	<b>\$ 122,012,370</b>	<b>100.00%</b>





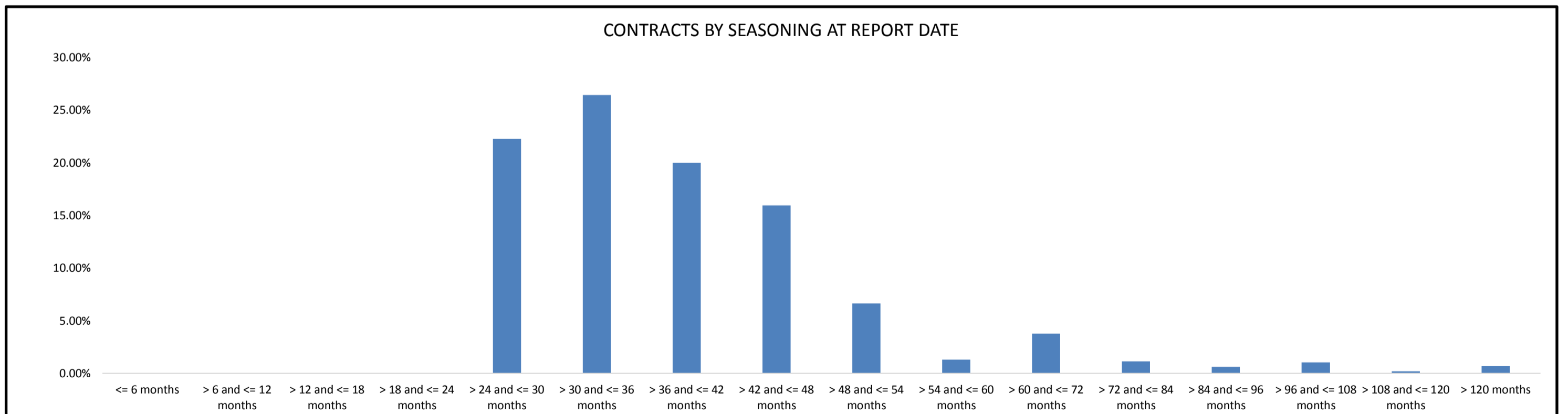
**Contracts by Term to Maturity at Origination Date**

Term to Maturity at Origination Date	Number of Contracts	(%) Number of Contracts	Receivables Outstanding	(%) Receivables Outstanding
<= 6 months	0	0.00%	\$ -	0.00%
> 6 and <= 12 months	0	0.00%	\$ -	0.00%
> 12 and <= 18 months	0	0.00%	\$ -	0.00%
> 18 and <= 24 months	0	0.00%	\$ -	0.00%
> 24 and <= 30 months	27	0.54%	\$ 398,568	0.33%
> 30 and <= 36 months	1,112	22.31%	\$ 22,525,790	18.46%
> 36 and <= 42 months	321	6.44%	\$ 5,847,936	4.79%
> 42 and <= 48 months	1,884	37.79%	\$ 41,776,043	34.24%
> 48 and <= 54 months	332	6.66%	\$ 4,842,039	3.97%
> 54 and <= 60 months	1,083	21.73%	\$ 36,056,960	29.55%
> 60 and <= 72 months	71	1.42%	\$ 2,109,182	1.73%
> 72 and <= 84 months	54	1.08%	\$ 2,329,762	1.91%
> 84 and <= 96 months	18	0.36%	\$ 917,865	0.75%
> 96 and <= 108 months	20	0.40%	\$ 867,556	0.71%
> 108 and <= 120 months	38	0.76%	\$ 3,514,036	2.88%
> 120 months	25	0.50%	\$ 826,633	0.68%
<b>Total</b>	<b>4,985</b>	<b>100.00%</b>	<b>\$ 122,012,370</b>	<b>100.00%</b>



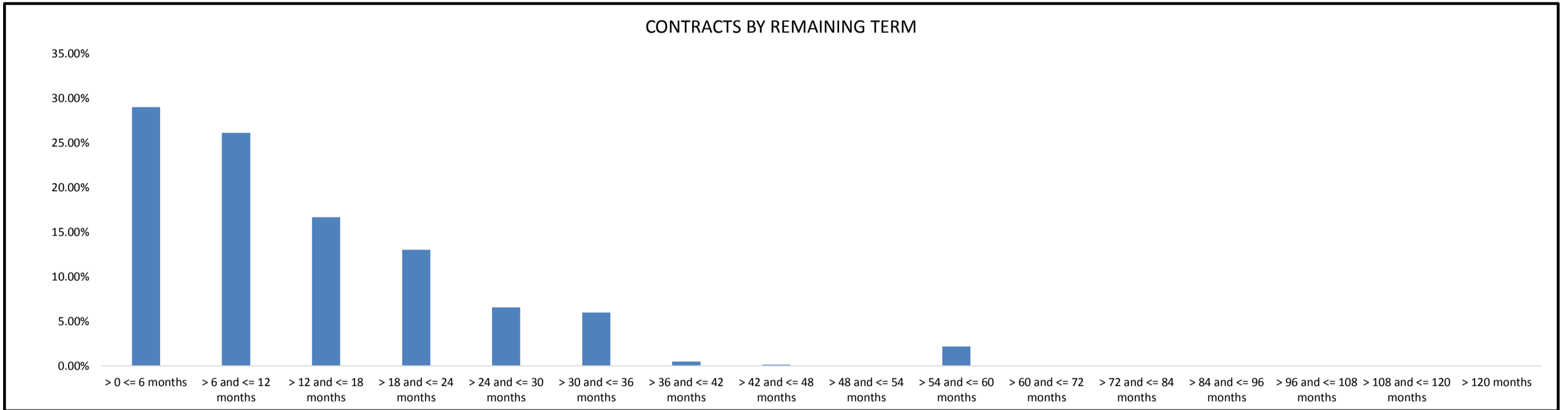
**Contracts by Seasoning at Report Date**

Seasoning at Report Date	Number of Contracts	(%) Number of Contracts	Receivables Outstanding	(%) Receivables Outstanding
<= 6 months	0	0.00%	\$ -	0.00%
> 6 and <= 12 months	0	0.00%	\$ -	0.00%
> 12 and <= 18 months	0	0.00%	\$ -	0.00%
> 18 and <= 24 months	0	0.00%	\$ -	0.00%
> 24 and <= 30 months	951	19.08%	\$ 27,143,294	22.25%
> 30 and <= 36 months	1,356	27.20%	\$ 32,237,534	26.42%
> 36 and <= 42 months	1,096	21.99%	\$ 24,379,015	19.98%
> 42 and <= 48 months	868	17.41%	\$ 19,433,490	15.93%
> 48 and <= 54 months	424	8.51%	\$ 8,104,734	6.64%
> 54 and <= 60 months	94	1.89%	\$ 1,590,697	1.30%
> 60 and <= 72 months	80	1.60%	\$ 4,592,410	3.76%
> 72 and <= 84 months	40	0.80%	\$ 1,403,389	1.15%
> 84 and <= 96 months	19	0.38%	\$ 774,734	0.63%
> 96 and <= 108 months	25	0.50%	\$ 1,284,994	1.05%
> 108 and <= 120 months	8	0.16%	\$ 241,445	0.20%
> 120 months	24	0.48%	\$ 826,633	0.68%
<b>Total</b>	<b>4,985</b>	<b>100.00%</b>	<b>\$ 122,012,370</b>	<b>100.00%</b>



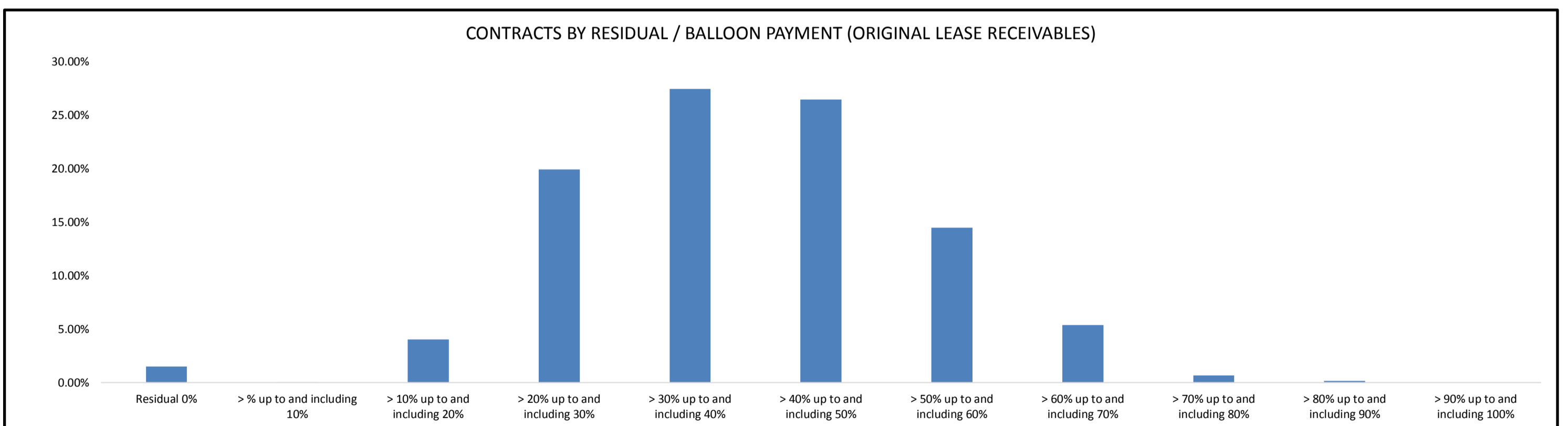
**Contracts by Remaining Term**

Remaining Term	Number of Contracts	(%) Number of Contracts	Receivables Outstanding	(%) Receivables Outstanding
> 0 <= 6 months	1,985	39.82%	\$ 35,371,420	28.99%
> 6 and <= 12 months	1,395	27.98%	\$ 31,835,705	26.09%
> 12 and <= 18 months	721	14.46%	\$ 20,301,886	16.64%
> 18 and <= 24 months	496	9.95%	\$ 15,876,941	13.01%
> 24 and <= 30 months	213	4.27%	\$ 7,980,771	6.54%
> 30 and <= 36 months	150	3.01%	\$ 7,297,385	5.98%
> 36 and <= 42 months	3	0.06%	\$ 574,060	0.47%
> 42 and <= 48 months	1	0.02%	\$ 143,351	0.12%
> 48 and <= 54 months	0	0.00%	\$ -	0.00%
> 54 and <= 60 months	21	0.42%	\$ 2,630,851	2.16%
> 60 and <= 72 months	0	0.00%	\$ -	0.00%
> 72 and <= 84 months	0	0.00%	\$ -	0.00%
> 84 and <= 96 months	0	0.00%	\$ -	0.00%
> 96 and <= 108 months	0	0.00%	\$ -	0.00%
> 108 and <= 120 months	0	0.00%	\$ -	0.00%
> 120 months	0	0.00%	\$ -	0.00%
<b>Total</b>	<b>4,985</b>	<b>100.00%</b>	<b>\$ 122,012,370</b>	<b>100.00%</b>



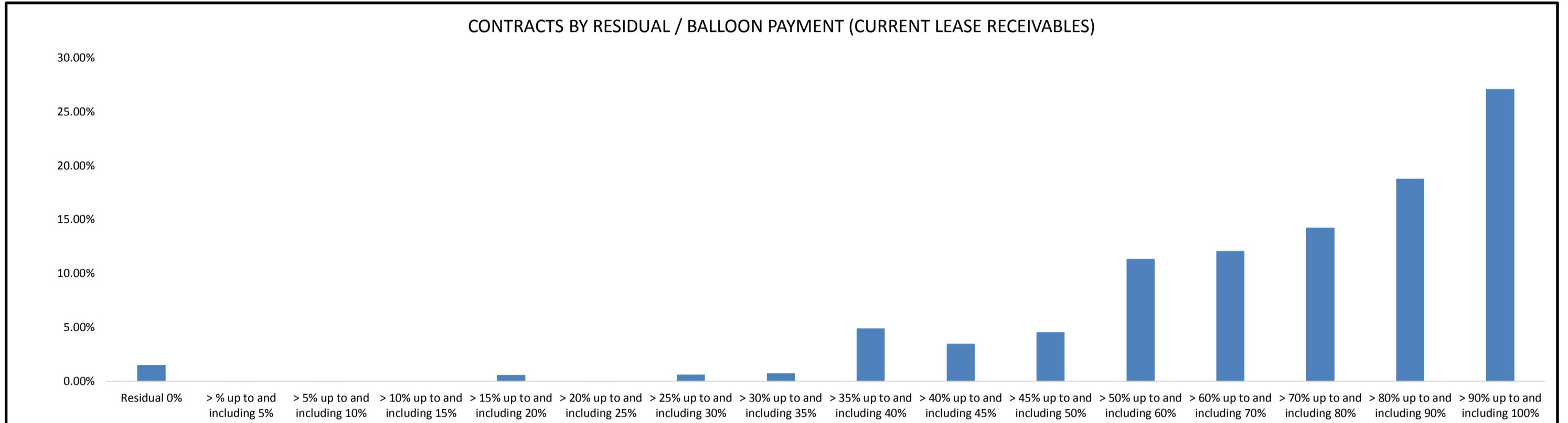
**Contracts by Residual/Balloon Payment (Original Lease Receivables)**

Residual/Balloon Payment (Original Lease Receivables)	Number of Contracts	(%) Number of Contracts	Receivables Outstanding	(%) Receivables Outstanding
Residual 0%	16	0.32%	\$ 1,844,565	1.51%
> % up to and including 10%	7	0.14%	\$ 49,052	0.04%
> 10% up to and including 20%	173	3.47%	\$ 4,927,952	4.04%
> 20% up to and including 30%	792	15.89%	\$ 24,269,386	19.89%
> 30% up to and including 40%	1,346	27.00%	\$ 33,453,253	27.42%
> 40% up to and including 50%	1,478	29.65%	\$ 32,254,278	26.44%
> 50% up to and including 60%	854	17.13%	\$ 17,628,665	14.45%
> 60% up to and including 70%	277	5.56%	\$ 6,563,886	5.38%
> 70% up to and including 80%	34	0.68%	\$ 831,414	0.68%
> 80% up to and including 90%	8	0.16%	\$ 189,919	0.16%
> 90% up to and including 100%	0	0.00%	\$ -	0.00%
<b>Total</b>	<b>4,985</b>	<b>100.00%</b>	<b>\$ 122,012,370</b>	<b>100.00%</b>



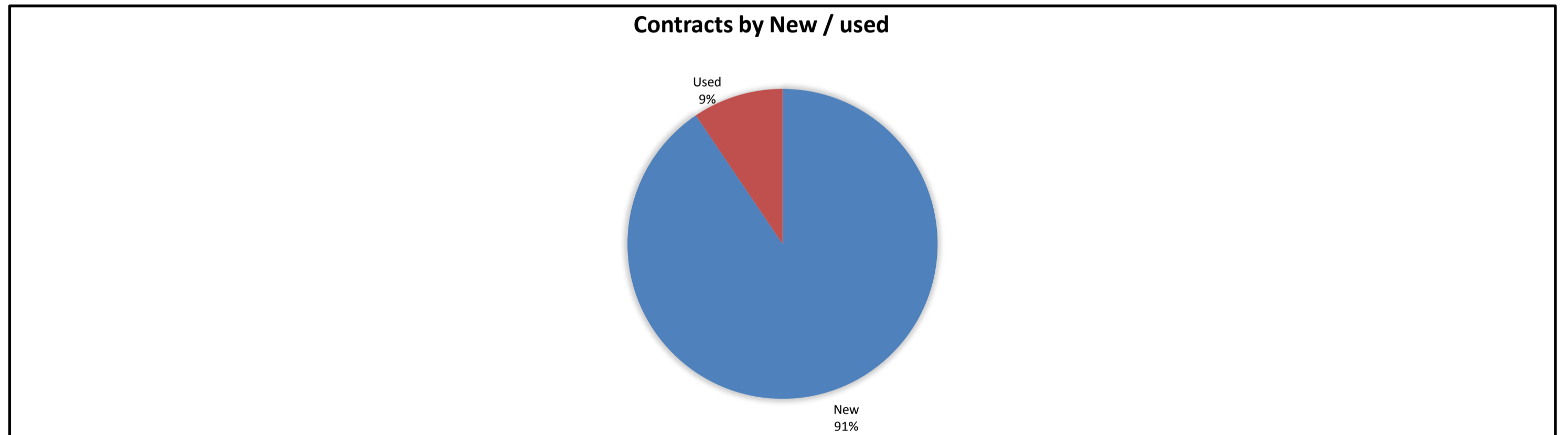
**Contracts by Residual/Balloon Payment (Current Lease Receivables)**

Residual/Balloon Payment (Current Lease Receivables)	Number of Contracts	(%) Number of Contracts	Receivables Outstanding	(%) Receivables Outstanding
Residual 0%	33	0.66%	\$ 1,844,991	1.51%
> % up to and including 5%	4	0.08%	\$ 27,698	0.02%
> 5% up to and including 10%	1	0.02%	\$ 3,809	0.00%
> 10% up to and including 15%	0	0.00%	\$ -	0.00%
> 15% up to and including 20%	6	0.12%	\$ 728,838	0.60%
> 20% up to and including 25%	2	0.04%	\$ 27,490	0.02%
> 25% up to and including 30%	18	0.36%	\$ 762,538	0.62%
> 30% up to and including 35%	25	0.50%	\$ 924,757	0.76%
> 35% up to and including 40%	125	2.51%	\$ 5,970,278	4.89%
> 40% up to and including 45%	116	2.33%	\$ 4,247,961	3.48%
> 45% up to and including 50%	187	3.75%	\$ 5,553,619	4.55%
> 50% up to and including 60%	435	8.73%	\$ 13,854,263	11.35%
> 60% up to and including 70%	507	10.17%	\$ 14,751,531	12.09%
> 70% up to and including 80%	744	14.92%	\$ 17,368,264	14.23%
> 80% up to and including 90%	1,059	21.24%	\$ 22,896,738	18.77%
> 90% up to and including 100%	1,723	34.56%	\$ 33,049,594	27.09%
<b>Total</b>	<b>4,985</b>	<b>100.00%</b>	<b>\$ 122,012,370</b>	<b>100.00%</b>



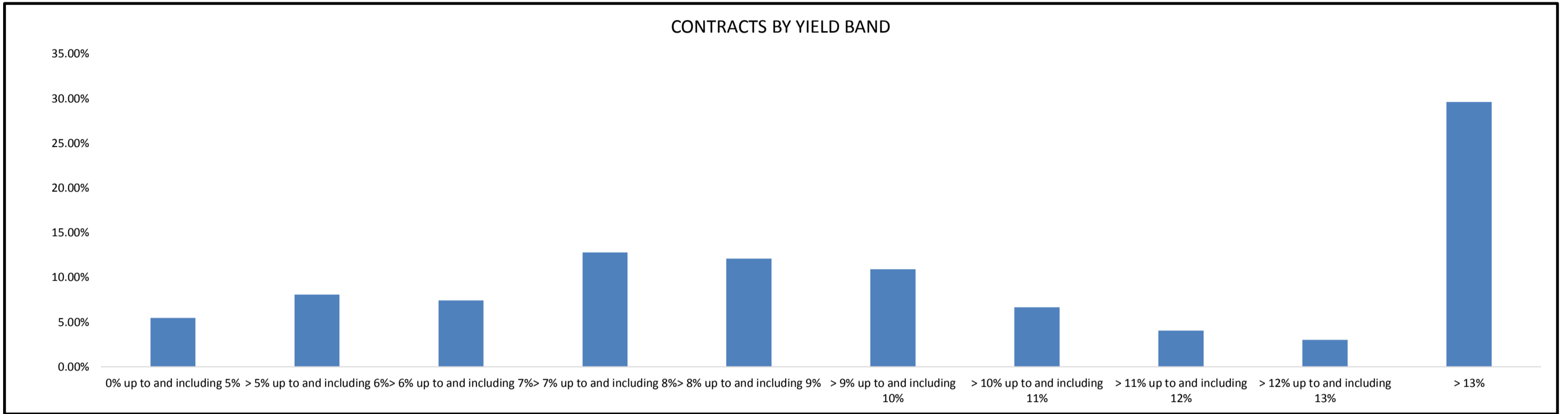
**Contracts by New / Used**

New / Used	Number of Contracts	(%) Number of Contracts	Receivables Outstanding	(%) Receivables Outstanding
New	4,648	93.24%	\$ 110,493,603	90.56%
Used	337	6.76%	\$ 11,518,768	9.44%
<b>Total</b>	<b>4,985</b>	<b>100.00%</b>	<b>\$ 122,012,370</b>	<b>100.00%</b>



**Contracts by Yield Band**

Yield Band	Number of Contracts	(%) Number of Contracts	Receivables Outstanding	(%) Receivables Outstanding
0% up to and including 5%	326	6.54%	\$ 6,660,303	5.46%
> 5% up to and including 6%	294	5.90%	\$ 9,823,580	8.05%
> 6% up to and including 7%	283	5.68%	\$ 9,045,322	7.41%
> 7% up to and including 8%	444	8.91%	\$ 15,595,195	12.78%
> 8% up to and including 9%	521	10.45%	\$ 14,742,606	12.08%
> 9% up to and including 10%	590	11.84%	\$ 13,293,723	10.90%
> 10% up to and including 11%	358	7.18%	\$ 8,120,853	6.66%
> 11% up to and including 12%	255	5.12%	\$ 4,932,343	4.04%
> 12% up to and including 13%	193	3.87%	\$ 3,656,846	3.00%
> 13%	1,721	34.52%	\$ 36,141,599	29.62%
<b>Total</b>	<b>4,985</b>	<b>100.00%</b>	<b>\$ 122,012,370</b>	<b>100.00%</b>



**Contracts by Interest Rate**

Interest Rate	Number of Contracts	(%) Number of Contracts	Receivables Outstanding	(%) Receivables Outstanding
0%	0	0.00%	\$ -	0.00%
> 0% up to and including 2%	0	0.00%	\$ -	0.00%
> 2% up to and including 4%	122	2.45%	\$ 2,389,120	1.96%
> 4% up to and including 6%	960	19.26%	\$ 26,613,603	21.81%
> 6% up to and including 8%	3,272	65.64%	\$ 77,333,733	63.38%
> 8% up to and including 10%	553	11.09%	\$ 13,059,499	10.70%
> 10% up to and including 12%	58	1.16%	\$ 1,533,137	1.26%
> 12% up to and including 14%	17	0.34%	\$ 993,560	0.81%
> 14% up to and including 16%	3	0.06%	\$ 89,718	0.07%
> 16% up to and including 18%	0	0.00%	\$ -	0.00%
> 18% up to and including 20%	0	0.00%	\$ -	0.00%
> 20%	0	0.00%	\$ -	0.00%
<b>Total</b>	<b>4,985</b>	<b>100.00%</b>	<b>\$ 122,012,370</b>	<b>100.00%</b>

