



FP Turbo Series 2016-1 Trust as at 28 February 2018

Portfolio Summary	
Portfolio size	\$ 194,034,743.56
Number of contracts	7,277
Number of obligors	899
Weighted average yield (p.a.)	9.14%
Average contract balance (current)	\$ 26,664.11
Maximum contract balance (current)	\$ 229,384.00
Average contract balance (original)	\$ 44,916.89
Maximum contract balance (original)	\$ 487,571.03
Weighted average total contract term (months)	49.89
Weighted average seasoning (months)	31.85
Weighted average remaining term (months)	18.03
Maximum remaining term (months)	68.09
Weighted average residual (current)	56.54%
Weighted average residual (original)	33.89%
Weighted average balloon percentage	66.07%
Balloon payments contract balance	\$ 191,904,711.83
Balloon payments contract count	7,251
Balloon payments value	\$ 128,195,394.21
Maximum balloon payment	\$ 131,226.36
Maximum contract balance	\$ 216,022.81

Top 10 Obligor

Customer Code	Number of Contracts	(%) Number of Contracts	Receivables Outstanding	(%) Receivables Outstanding
AAN0481	610	8.38%	\$ 15,070,255	7.77%
AAG0025	297	4.08%	\$ 8,164,671	4.21%
ATE0041	348	4.78%	\$ 7,858,796	4.05%
ARO0130	86	1.18%	\$ 7,810,938	4.03%
ARI0248	341	4.69%	\$ 6,966,825	3.59%
AMU0167	127	1.75%	\$ 6,374,770	3.29%
ARA0071	133	1.83%	\$ 4,140,505	2.13%
ASP0122	29	0.40%	\$ 3,894,855	2.01%
ATS0013	150	2.06%	\$ 3,692,347	1.90%
ACN0001	142	1.95%	\$ 2,972,997	1.53%
Total	2,263	31.10%	\$ 66,946,959	34.50%

Top 10 Contract Balance

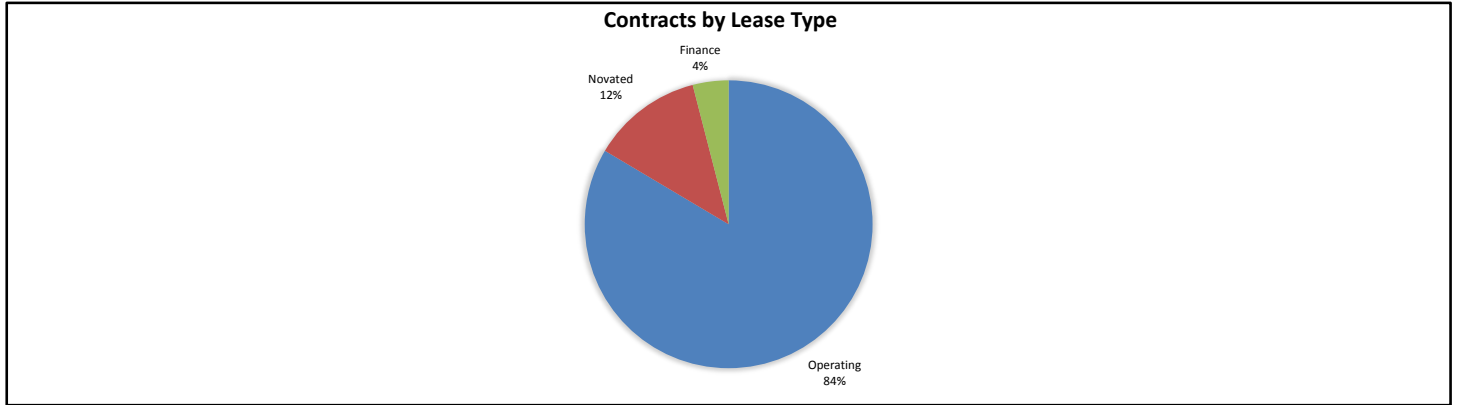
	Receivables Outstanding
1st Decile Upper Limit	\$ 229,384
2nd Decile Upper Limit	\$ 221,987
3rd Decile Upper Limit	\$ 221,413
4th Decile Upper Limit	\$ 220,420
5th Decile Upper Limit	\$ 219,968
6th Decile Upper Limit	\$ 217,851
7th Decile Upper Limit	\$ 216,023
8th Decile Upper Limit	\$ 215,776
9th Decile Upper Limit	\$ 215,501
10th Decile Upper Limit	\$ 215,245

Top 10 Contract Aggregate Balance

	Receivables Outstanding
Aggregate Balance- 1st Decile	\$ 229,384
Aggregate Balance- 2nd Decile	\$ 221,987
Aggregate Balance- 3rd Decile	\$ 221,413
Aggregate Balance- 4th Decile	\$ 220,420
Aggregate Balance- 5th Decile	\$ 219,968
Aggregate Balance- 6th Decile	\$ 217,851
Aggregate Balance- 7th Decile	\$ 216,023
Aggregate Balance- 8th Decile	\$ 215,776
Aggregate Balance- 9th Decile	\$ 431,002
Aggregate Balance- 10th Decile	\$ 645,735
Total	\$ 2,839,559

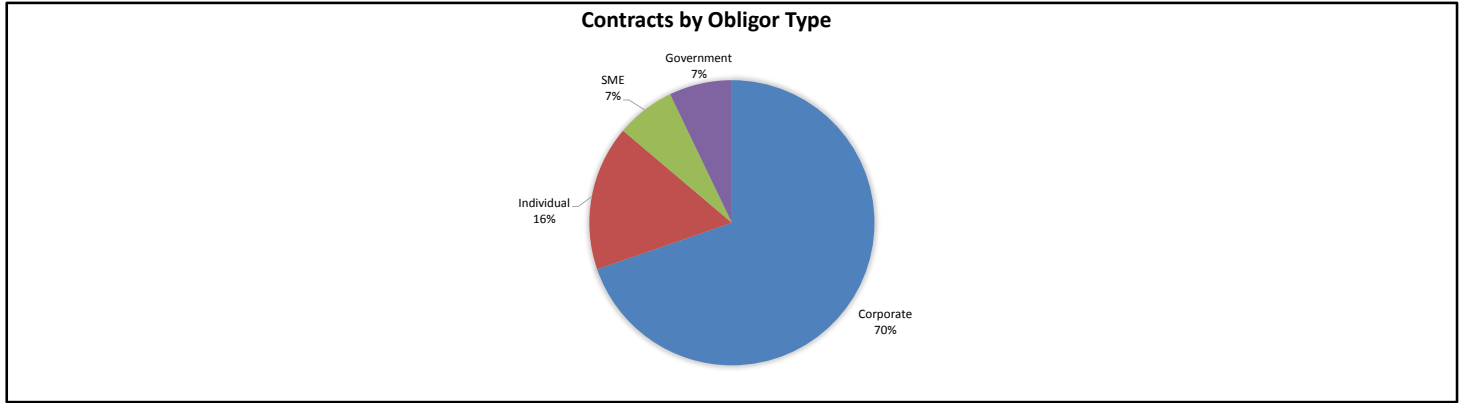
Contracts by Lease Type

Lease Type	Number of Contracts	(%) Number of Contracts	Receivables Outstanding	(%) Receivables Outstanding
Operating	6,120	84.10%	\$ 162,079,518	83.53%
Novated	842	11.57%	\$ 24,148,033	12.45%
Finance	315	4.33%	\$ 7,807,192	4.02%
Total	7,277	100.00%	\$ 194,034,744	100.00%



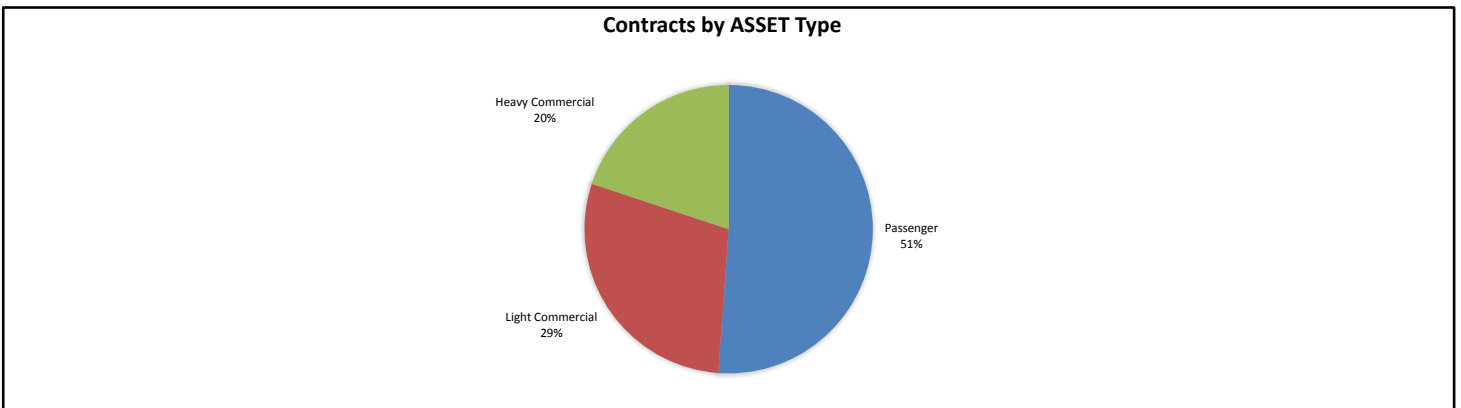
Contracts by Obligor Type

Obligor Type	Number of Contracts	(%) Number of Contracts	Receivables Outstanding	(%) Receivables Outstanding
Corporate	5,170	71.05%	\$ 135,258,899	69.71%
Individual	1,157	15.90%	\$ 31,955,225	16.47%
SME	642	8.82%	\$ 12,992,170	6.70%
Government	308	4.23%	\$ 13,828,449	7.13%
Total	7,277	100.00%	\$ 194,034,744	100.00%



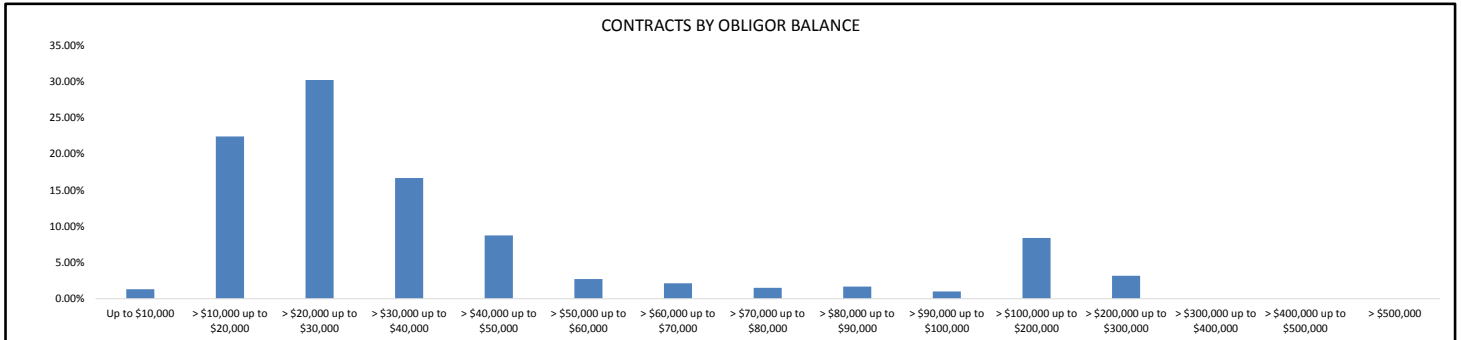
Contracts by Asset Type

Asset Type	Number of Contracts	(%) Number of Contracts	Receivables Outstanding	(%) Receivables Outstanding
Passenger	4,618	63.46%	\$ 99,259,919	51.16%
Light Commercial	2,144	29.46%	\$ 56,144,496	28.94%
Heavy Commercial	515	7.08%	\$ 38,630,328	19.91%
Total	7,277	100.00%	\$ 194,034,744	100.00%



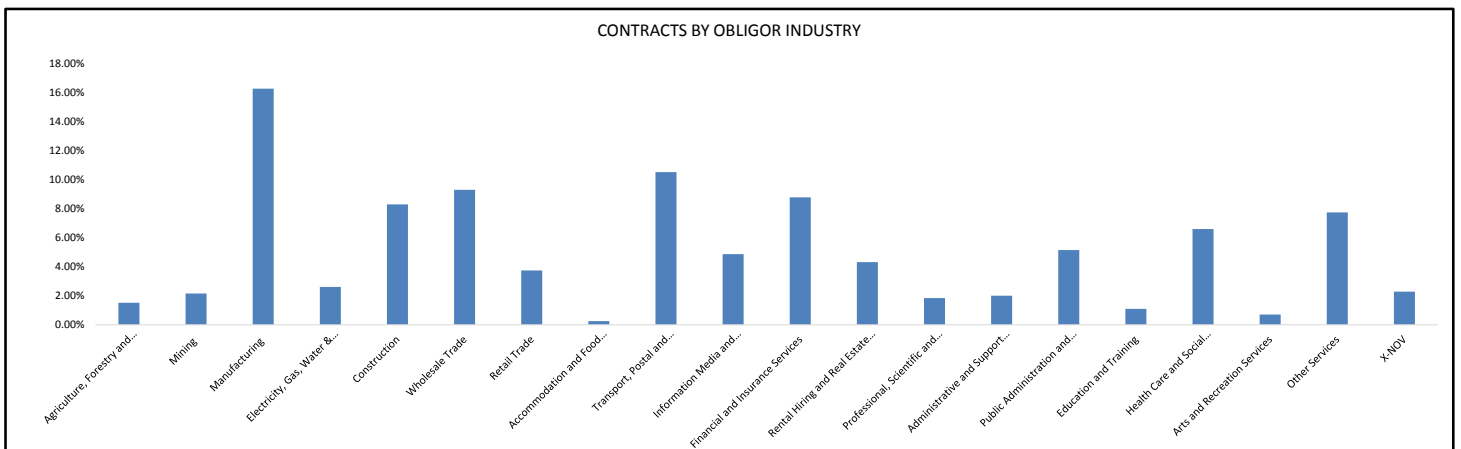
Contracts by Obligor Balance

Obligor Balance	Number of Contracts	(%) Number of Contracts	Receivables Outstanding	(%) Receivables Outstanding
Up to \$10,000	351	4.82%	\$ 2,531,757	1.30%
> \$10,000 up to \$20,000	2,817	38.71%	\$ 43,508,664	22.42%
> \$20,000 up to \$30,000	2,374	32.62%	\$ 58,655,314	30.23%
> \$30,000 up to \$40,000	944	12.97%	\$ 32,357,143	16.68%
> \$40,000 up to \$50,000	385	5.29%	\$ 16,967,246	8.74%
> \$50,000 up to \$60,000	97	1.33%	\$ 5,258,539	2.71%
> \$60,000 up to \$70,000	64	0.88%	\$ 4,121,335	2.12%
> \$70,000 up to \$80,000	39	0.54%	\$ 2,925,344	1.51%
> \$80,000 up to \$90,000	39	0.54%	\$ 3,275,400	1.69%
> \$90,000 up to \$100,000	21	0.29%	\$ 1,968,339	1.01%
> \$100,000 up to \$200,000	117	1.61%	\$ 16,309,948	8.41%
> \$200,000 up to \$300,000	29	0.40%	\$ 6,155,715	3.17%
> \$300,000 up to \$400,000	0	0.00%	\$ -	0.00%
> \$400,000 up to \$500,000	0	0.00%	\$ -	0.00%
> \$500,000	0	0.00%	\$ -	0.00%
Total	7,277	100.00%	\$ 194,034,744	100.00%



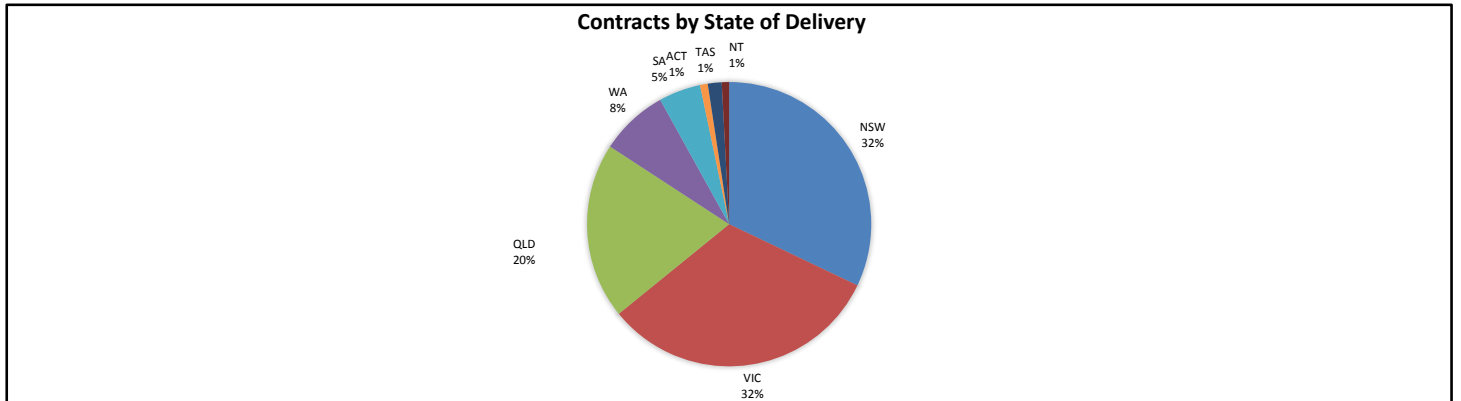
Contracts by Obligor Industry

Obligor Industry	Number of Contracts	(%) Number of Contracts	Receivables Outstanding	(%) Receivables Outstanding
ANZSIC Industry Division: Agriculture, Forestry and Fishing	106	1.46%	\$ 2,931,008	1.51%
ANZSIC Industry Division: Mining	148	2.03%	\$ 4,179,581	2.15%
ANZSIC Industry Division: Manufacturing	1,191	16.37%	\$ 31,564,681	16.27%
ANZSIC Industry Division: Electricity, Gas, Water and Waste Services	207	2.84%	\$ 5,057,511	2.61%
ANZSIC Industry Division: Construction	573	7.87%	\$ 16,092,936	8.29%
ANZSIC Industry Division: Wholesale Trade	747	10.27%	\$ 18,031,796	9.29%
ANZSIC Industry Division: Retail Trade	245	3.37%	\$ 7,251,676	3.74%
ANZSIC Industry Division: Accommodation and Food Services	22	0.30%	\$ 487,983	0.25%
ANZSIC Industry Division: Transport, Postal and Warehousing	417	5.73%	\$ 20,407,353	10.52%
ANZSIC Industry Division: Information Media and Telecommunications	417	5.73%	\$ 9,435,684	4.86%
ANZSIC Industry Division: Financial and Insurance Services	686	9.43%	\$ 17,027,277	8.78%
ANZSIC Industry Division: Rental, Hiring and Real Estate Services	423	5.81%	\$ 8,368,706	4.31%
ANZSIC Industry Division: Professional, Scientific and Technical Services	118	1.62%	\$ 3,579,974	1.85%
ANZSIC Industry Division: Administrative and Support Services	167	2.29%	\$ 3,886,937	2.00%
ANZSIC Industry Division: Public Administration and Safety	189	2.60%	\$ 9,977,808	5.14%
ANZSIC Industry Division: Education and Training	87	1.20%	\$ 2,124,440	1.09%
ANZSIC Industry Division: Health Care and Social Assistance	703	9.66%	\$ 12,801,922	6.60%
ANZSIC Industry Division: Arts and Recreational Services	70	0.96%	\$ 1,376,945	0.71%
Other Services	593	8.15%	\$ 15,017,426	7.74%
X-NOV	168	2.31%	\$ 4,433,100	2.28%
Total	7,277	100.00%	\$ 194,034,744	100.00%



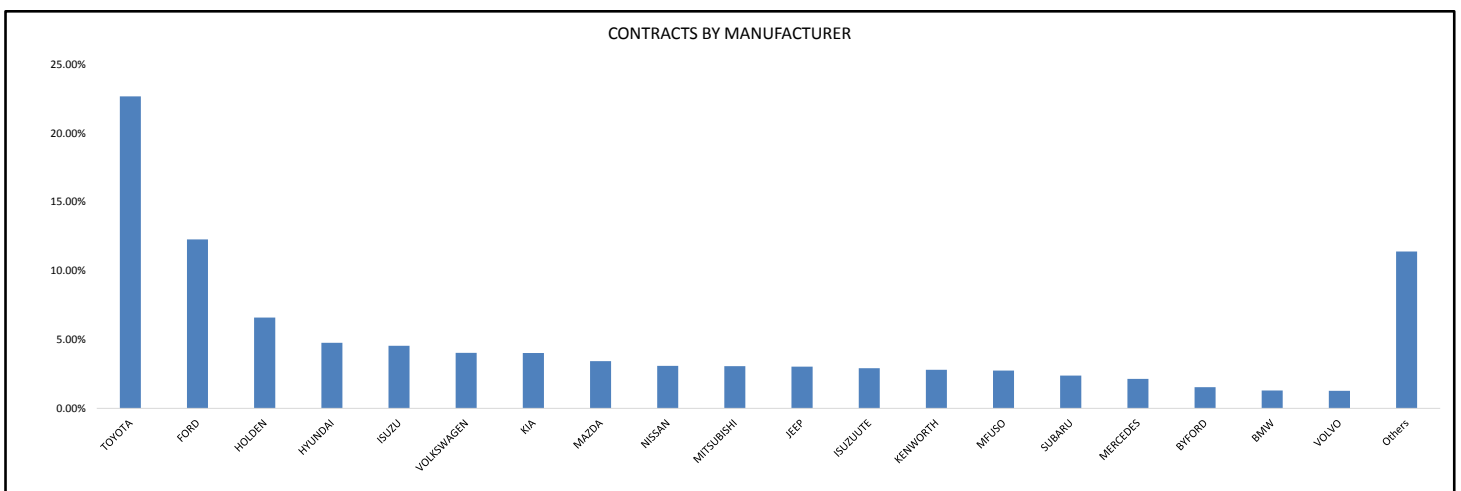
Contracts by State of Delivery

State of Delivery	Number of Contracts	(%) Number of Contracts	Receivables Outstanding	(%) Receivables Outstanding
NSW	2,182	29.98%	\$ 62,257,098	32.09%
VIC	2,323	31.92%	\$ 62,202,677	32.06%
QLD	1,501	20.63%	\$ 38,910,902	20.05%
WA	623	8.56%	\$ 15,031,129	7.75%
SA	400	5.50%	\$ 9,254,466	4.77%
ACT	67	0.92%	\$ 1,701,142	0.88%
TAS	126	1.73%	\$ 3,059,034	1.58%
NT	55	0.76%	\$ 1,618,295	0.83%
Total	7,277	100.00%	\$ 194,034,744	100.00%



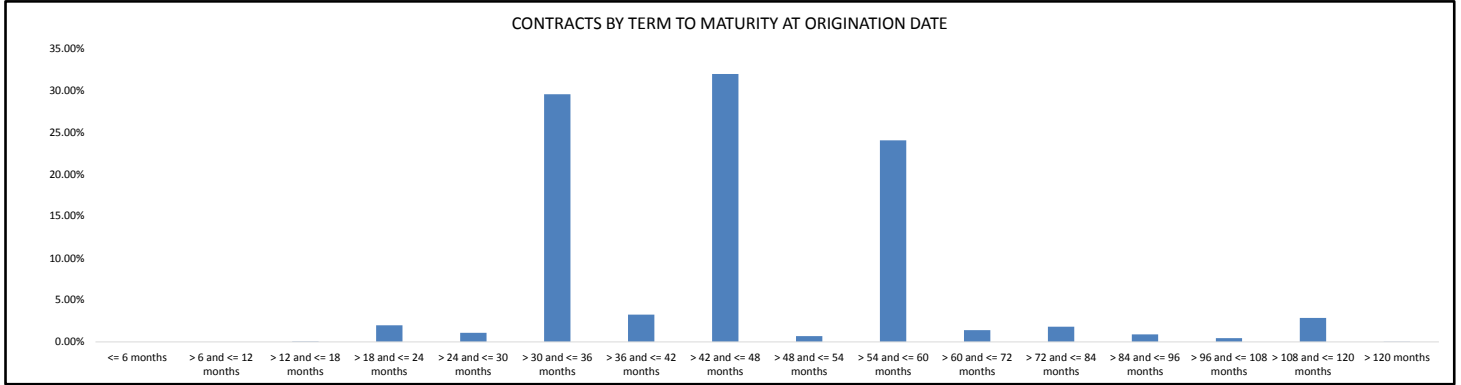
Contracts by Manufacturer

Manufacturer	Number of Contracts	(%) Number of Contracts	Receivables Outstanding	(%) Receivables Outstanding
TOYOTA	1,791	24.61%	\$ 43,965,522	22.66%
FORD	1,040	14.29%	\$ 23,818,745	12.28%
HOLDEN	633	8.70%	\$ 12,802,815	6.60%
HYUNDAI	523	7.19%	\$ 9,239,490	4.76%
ISUZU	138	1.90%	\$ 8,827,543	4.55%
VOLKSWAGEN	350	4.81%	\$ 7,836,131	4.04%
KIA	402	5.52%	\$ 7,802,675	4.02%
MAZDA	321	4.41%	\$ 6,664,423	3.43%
NISSAN	288	3.96%	\$ 5,991,244	3.09%
MITSUBISHI	290	3.99%	\$ 5,936,347	3.06%
JEEP	239	3.28%	\$ 5,878,423	3.03%
ISUZUUTE	202	2.78%	\$ 5,660,946	2.92%
KENWORTH	29	0.40%	\$ 5,446,483	2.81%
MFUSO	92	1.26%	\$ 5,321,536	2.74%
SUBARU	203	2.79%	\$ 4,622,852	2.38%
MERCEDES	89	1.22%	\$ 4,155,486	2.14%
BYFORD	21	0.29%	\$ 2,977,985	1.53%
BMW	57	0.78%	\$ 2,512,925	1.30%
VOLVO	30	0.41%	\$ 2,474,420	1.28%
Others	539	7.41%	\$ 22,098,752	11.39%
Total	7,277	100.00%	\$ 194,034,744	100.00%



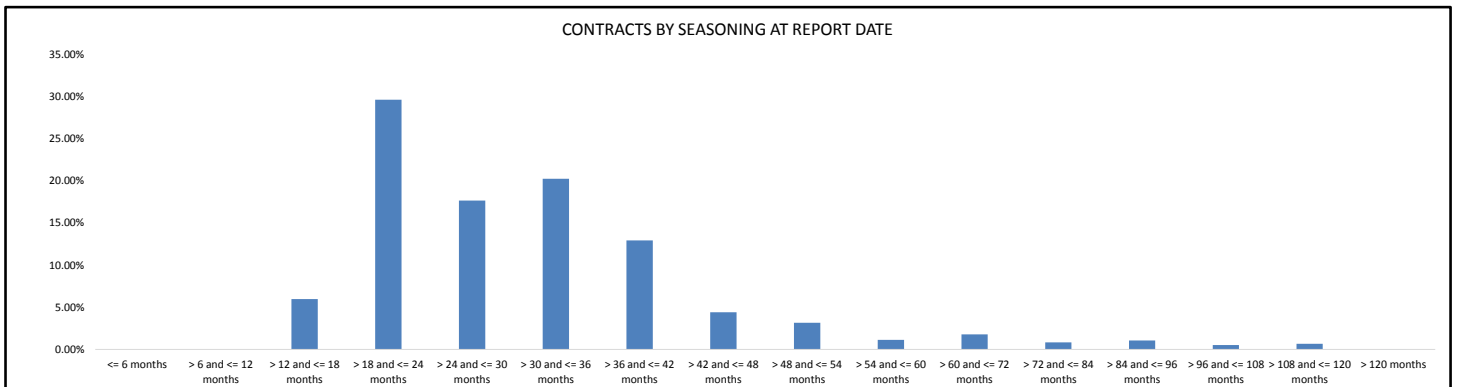
Contracts by Term to Maturity at Origination Date

Term to Maturity at Origination Date	Number of Contracts	(%) Number of Contracts	Receivables Outstanding	(%) Receivables Outstanding
<= 6 months	0	0.00%	\$ -	0.00%
> 6 and <= 12 months	0	0.00%	\$ -	0.00%
> 12 and <= 18 months	6	0.08%	\$ 77,959	0.04%
> 18 and <= 24 months	202	2.78%	\$ 3,864,975	1.99%
> 24 and <= 30 months	99	1.36%	\$ 2,117,479	1.09%
> 30 and <= 36 months	2,587	35.55%	\$ 57,312,473	29.54%
> 36 and <= 42 months	369	5.07%	\$ 6,318,929	3.26%
> 42 and <= 48 months	2,445	33.60%	\$ 61,972,602	31.94%
> 48 and <= 54 months	90	1.24%	\$ 1,348,956	0.70%
> 54 and <= 60 months	1,167	16.04%	\$ 46,626,485	24.03%
> 60 and <= 72 months	117	1.61%	\$ 2,734,049	1.41%
> 72 and <= 84 months	76	1.04%	\$ 3,504,221	1.81%
> 84 and <= 96 months	35	0.48%	\$ 1,724,772	0.89%
> 96 and <= 108 months	18	0.25%	\$ 880,089	0.45%
> 108 and <= 120 months	65	0.89%	\$ 5,549,870	2.86%
> 120 months	1	0.01%	\$ 1,884	0.00%
Total	7,277	100.00%	\$ 194,034,744	100.00%



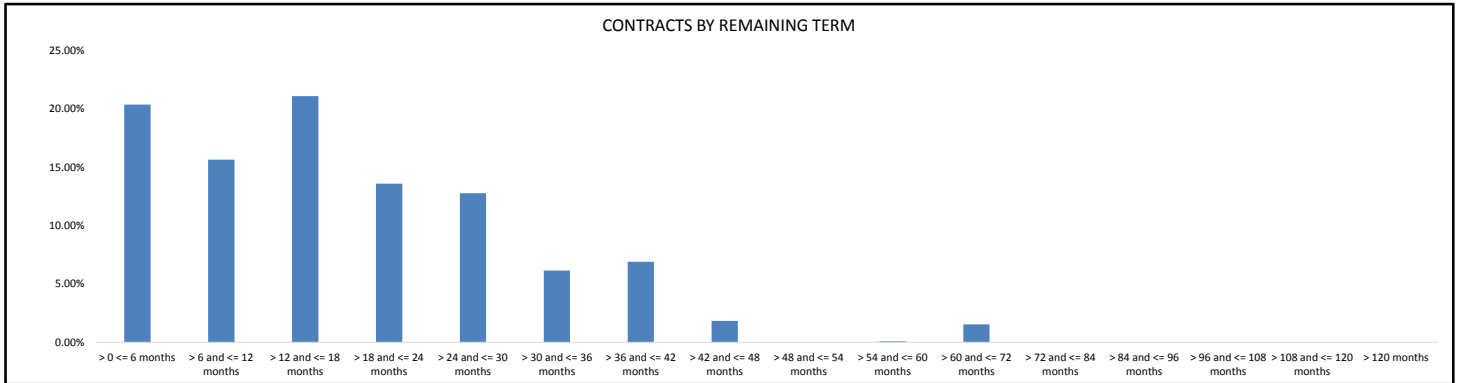
Contracts by Seasoning at Report Date

Seasoning at Report Date	Number of Contracts	(%) Number of Contracts	Receivables Outstanding	(%) Receivables Outstanding
<= 6 months	0	0.00%	\$ -	0.00%
> 6 and <= 12 months	0	0.00%	\$ -	0.00%
> 12 and <= 18 months	341	4.69%	\$ 11,592,740	5.97%
> 18 and <= 24 months	1,914	26.30%	\$ 57,476,896	29.62%
> 24 and <= 30 months	1,320	18.14%	\$ 34,266,740	17.66%
> 30 and <= 36 months	1,689	23.21%	\$ 39,284,232	20.25%
> 36 and <= 42 months	1,061	14.58%	\$ 25,075,096	12.92%
> 42 and <= 48 months	444	6.10%	\$ 8,537,817	4.40%
> 48 and <= 54 months	152	2.09%	\$ 6,138,664	3.16%
> 54 and <= 60 months	88	1.21%	\$ 2,196,282	1.13%
> 60 and <= 72 months	128	1.76%	\$ 3,445,160	1.78%
> 72 and <= 84 months	53	0.73%	\$ 1,619,694	0.83%
> 84 and <= 96 months	40	0.55%	\$ 2,068,810	1.07%
> 96 and <= 108 months	18	0.25%	\$ 1,017,569	0.52%
> 108 and <= 120 months	28	0.38%	\$ 1,313,158	0.68%
> 120 months	1	0.01%	\$ 1,884	0.00%
Total	7,277	100.00%	\$ 194,034,744	100.00%



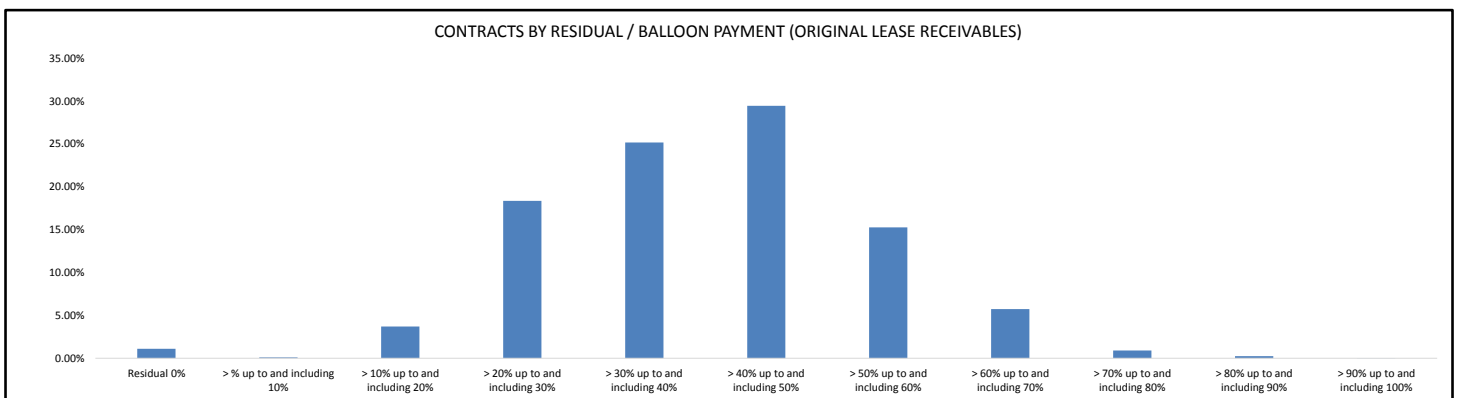
Contracts by Remaining Term

Remaining Term	Number of Contracts	(%) Number of Contracts	Receivables Outstanding	(%) Receivables Outstanding
> 0 <= 6 months	2,154	29.60%	\$ 39,534,269	20.37%
> 6 and <= 12 months	1,359	18.68%	\$ 30,389,908	15.66%
> 12 and <= 18 months	1,577	21.67%	\$ 40,952,257	21.11%
> 18 and <= 24 months	838	11.52%	\$ 26,375,619	13.59%
> 24 and <= 30 months	692	9.51%	\$ 24,785,239	12.77%
> 30 and <= 36 months	300	4.12%	\$ 11,925,849	6.15%
> 36 and <= 42 months	283	3.89%	\$ 13,398,627	6.91%
> 42 and <= 48 months	52	0.71%	\$ 3,535,992	1.82%
> 48 and <= 54 months	0	0.00%	\$ -	0.00%
> 54 and <= 60 months	1	0.01%	\$ 158,999	0.08%
> 60 and <= 72 months	21	0.29%	\$ 2,977,985	1.53%
> 72 and <= 84 months	0	0.00%	\$ -	0.00%
> 84 and <= 96 months	0	0.00%	\$ -	0.00%
> 96 and <= 108 months	0	0.00%	\$ -	0.00%
> 108 and <= 120 months	0	0.00%	\$ -	0.00%
> 120 months	0	0.00%	\$ -	0.00%
Total	7,277	100.00%	\$ 194,034,744	100.00%



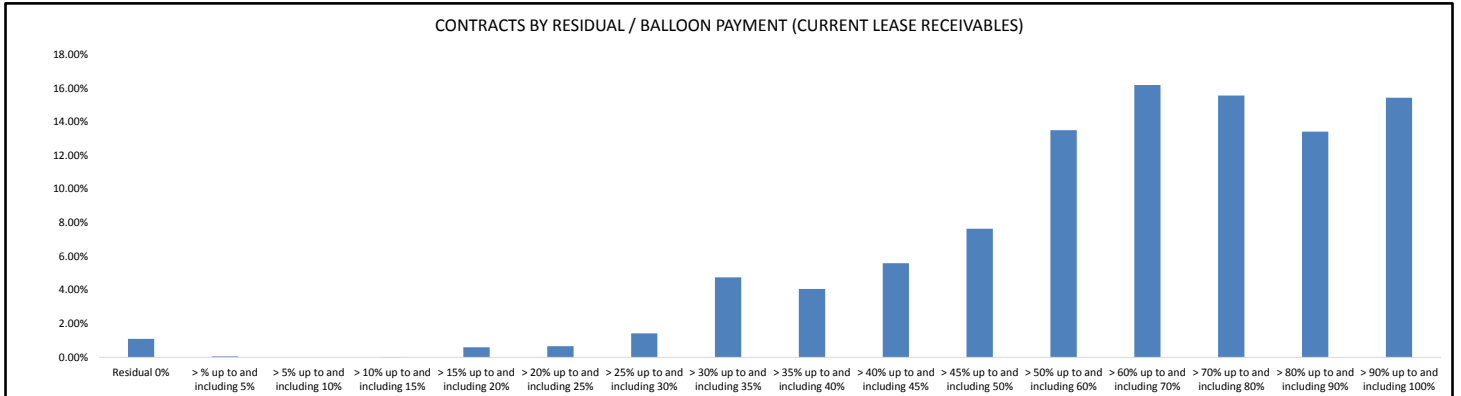
Contracts by Residual/Balloon Payment (Original Lease Receivables)

Residual/Balloon Payment (Original Lease Receivables)	Number of Contracts	(%) Number of Contracts	Receivables Outstanding	(%) Receivables Outstanding
Residual 0%	17	0.23%	\$ 2,130,032	1.10%
> % up to and including 10%	12	0.16%	\$ 193,066	0.10%
> 10% up to and including 20%	213	2.93%	\$ 7,167,611	3.69%
> 20% up to and including 30%	1,015	13.95%	\$ 35,621,397	18.36%
> 30% up to and including 40%	1,735	23.84%	\$ 48,813,766	25.16%
> 40% up to and including 50%	2,458	33.78%	\$ 57,121,097	29.44%
> 50% up to and including 60%	1,315	18.07%	\$ 29,632,871	15.27%
> 60% up to and including 70%	429	5.90%	\$ 11,118,267	5.73%
> 70% up to and including 80%	64	0.88%	\$ 1,741,434	0.90%
> 80% up to and including 90%	18	0.25%	\$ 476,935	0.25%
> 90% up to and including 100%	1	0.01%	\$ 18,268	0.01%
Total	7,277	100.00%	\$ 194,034,744	100.00%



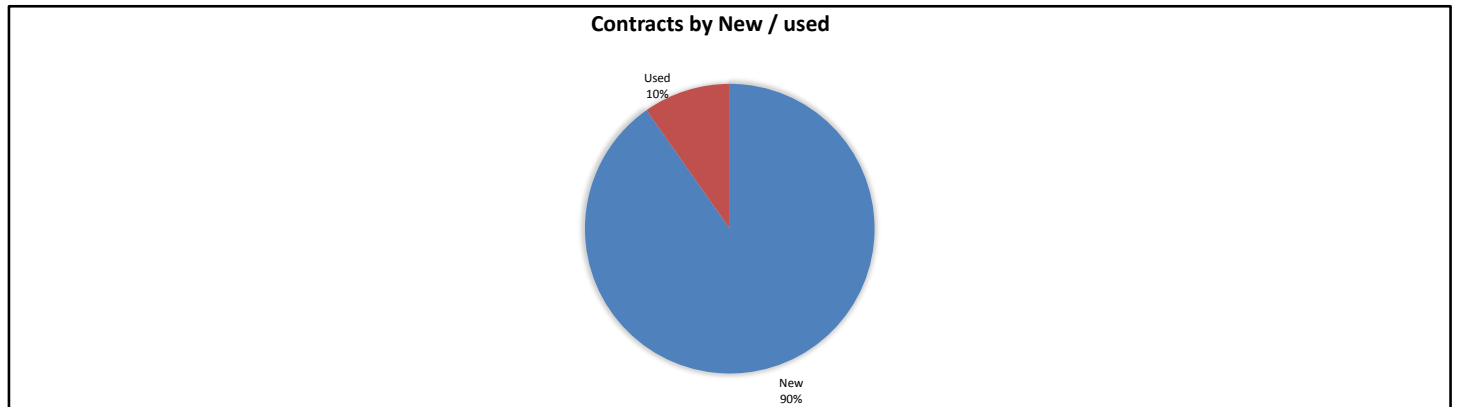
Contracts by Residual/Balloon Payment (Current Lease Receivables)

Residual/Balloon Payment (Current Lease Receivables)	Number of Contracts	(%) Number of Contracts	Receivables Outstanding	(%) Receivables Outstanding
Residual 0%	26	0.36%	\$ 2,130,032	1.10%
> % up to and including 5%	7	0.10%	\$ 108,742	0.06%
> 5% up to and including 10%	0	0.00%	\$ -	0.00%
> 10% up to and including 15%	2	0.03%	\$ 30,508	0.02%
> 15% up to and including 20%	12	0.16%	\$ 1,158,238	0.60%
> 20% up to and including 25%	23	0.32%	\$ 1,289,315	0.66%
> 25% up to and including 30%	71	0.98%	\$ 2,763,293	1.42%
> 30% up to and including 35%	161	2.21%	\$ 9,223,363	4.75%
> 35% up to and including 40%	225	3.09%	\$ 7,896,445	4.07%
> 40% up to and including 45%	295	4.05%	\$ 10,853,070	5.59%
> 45% up to and including 50%	376	5.17%	\$ 14,829,654	7.64%
> 50% up to and including 60%	837	11.50%	\$ 26,199,227	13.50%
> 60% up to and including 70%	1,159	15.93%	\$ 31,400,460	16.18%
> 70% up to and including 80%	1,279	17.58%	\$ 30,184,576	15.56%
> 80% up to and including 90%	1,211	16.64%	\$ 26,033,159	13.42%
> 90% up to and including 100%	1,593	21.89%	\$ 29,934,661	15.43%
Total	7,277	100.00%	\$ 194,034,744	100.00%



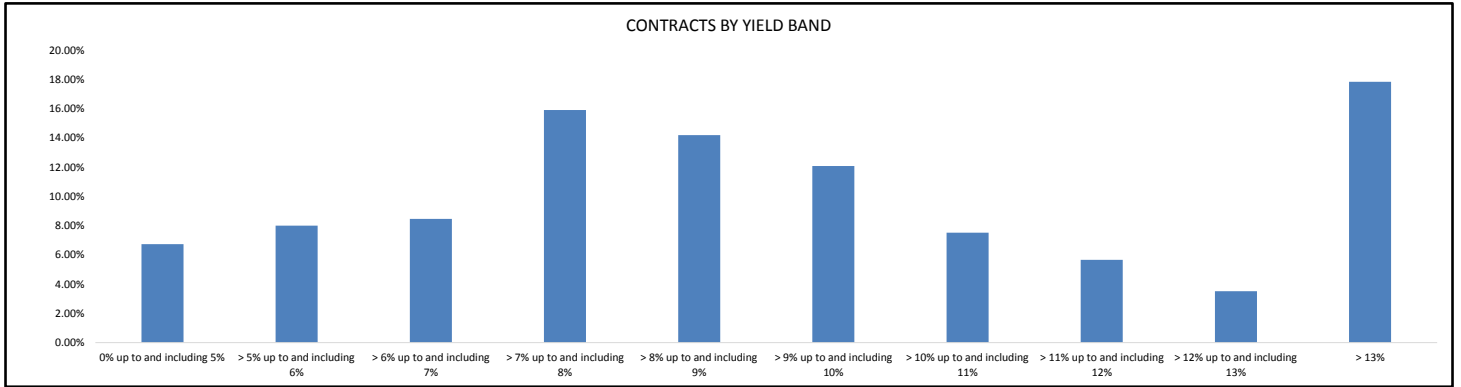
Contracts by New / Used

New / Used	Number of Contracts	(%) Number of Contracts	Receivables Outstanding	(%) Receivables Outstanding
New	6,698	92.04%	\$ 175,119,929	90.25%
Used	579	7.96%	\$ 18,914,814	9.75%
Total	7,277	100.00%	\$ 194,034,744	100.00%



Contracts by Yield Band

Yield Band	Number of Contracts	(%) Number of Contracts	Receivables Outstanding	(%) Receivables Outstanding
0% up to and including 5%	578	7.94%	\$ 13,088,412	6.75%
> 5% up to and including 6%	477	6.55%	\$ 15,544,482	8.01%
> 6% up to and including 7%	497	6.83%	\$ 16,425,080	8.47%
> 7% up to and including 8%	816	11.21%	\$ 30,894,933	15.92%
> 8% up to and including 9%	934	12.83%	\$ 27,565,242	14.21%
> 9% up to and including 10%	904	12.42%	\$ 23,449,465	12.09%
> 10% up to and including 11%	582	8.00%	\$ 14,606,854	7.53%
> 11% up to and including 12%	475	6.53%	\$ 10,995,661	5.67%
> 12% up to and including 13%	333	4.58%	\$ 6,820,038	3.51%
> 13%	1,681	23.10%	\$ 34,644,576	17.85%
Total	7,277	100.00%	\$ 194,034,744	100.00%



Contracts by Interest Rate

Interest Rate	Number of Contracts	(%) Number of Contracts	Receivables Outstanding	(%) Receivables Outstanding
0%	0	0.00%	\$ -	0.00%
> 0% up to and including 2%	0	0.00%	\$ -	0.00%
> 2% up to and including 4%	161	2.21%	\$ 3,712,801	1.91%
> 4% up to and including 6%	1,413	19.42%	\$ 41,622,376	21.45%
> 6% up to and including 8%	4,865	66.85%	\$ 124,422,863	64.12%
> 8% up to and including 10%	682	9.37%	\$ 19,362,392	9.98%
> 10% up to and including 12%	122	1.68%	\$ 2,928,551	1.51%
> 12% up to and including 14%	31	0.43%	\$ 1,877,820	0.97%
> 14% up to and including 16%	3	0.04%	\$ 107,940	0.06%
> 16% up to and including 18%	0	0.00%	\$ -	0.00%
> 18% up to and including 20%	0	0.00%	\$ -	0.00%
> 20%	0	0.00%	\$ -	0.00%
Total	7,277	100.00%	\$ 194,034,744	100.00%

