



**FP Turbo Series 2016-1 Trust as at 30 April 2018**

Portfolio Summary	
Portfolio size	\$ 177,641,816.71
Number of contracts	6,775
Number of obligors	879
Weighted average yield (p.a.)	10.32%
Average contract balance (current)	\$ 26,220.19
Maximum contract balance (current)	\$ 220,356.84
Average contract balance (original)	\$ 45,287.79
Maximum contract balance (original)	\$ 487,571.03
Weighted average total contract term (months)	50.47
Weighted average seasoning (months)	33.48
Weighted average remaining term (months)	17.00
Maximum remaining term (months)	66.08
Weighted average residual (current)	58.91%
Weighted average residual (original)	33.76%
Weighted average balloon percentage	68.48%
Balloon payments contract balance	\$ 175,567,934.91
Balloon payments contract count	6,744
Balloon payments value	\$ 121,641,049.16
Maximum balloon payment	\$ 187,631.82
Maximum contract balance	\$ 209,017.99

**Top 10 Obligor**

Customer Code	Number of Contracts	(%) Number of Contracts	Receivables Outstanding	(%) Receivables Outstanding
AAN0481	580	8.56%	\$ 14,213,043	8.00%
AAG0025	288	4.25%	\$ 7,839,928	4.41%
ARO0130	86	1.27%	\$ 7,630,530	4.30%
ATE0041	331	4.89%	\$ 7,354,857	4.14%
ARI0248	340	5.02%	\$ 6,816,447	3.84%
AMU0167	125	1.85%	\$ 6,236,006	3.51%
ARA0071	119	1.76%	\$ 3,862,236	2.17%
ASP0122	29	0.43%	\$ 3,816,202	2.15%
ATS0013	150	2.21%	\$ 3,633,710	2.05%
ACN0001	129	1.90%	\$ 2,681,953	1.51%
<b>Total</b>	<b>2,177</b>	<b>32.13%</b>	<b>\$ 64,084,912</b>	<b>36.08%</b>

**Top 10 Contract Balance**

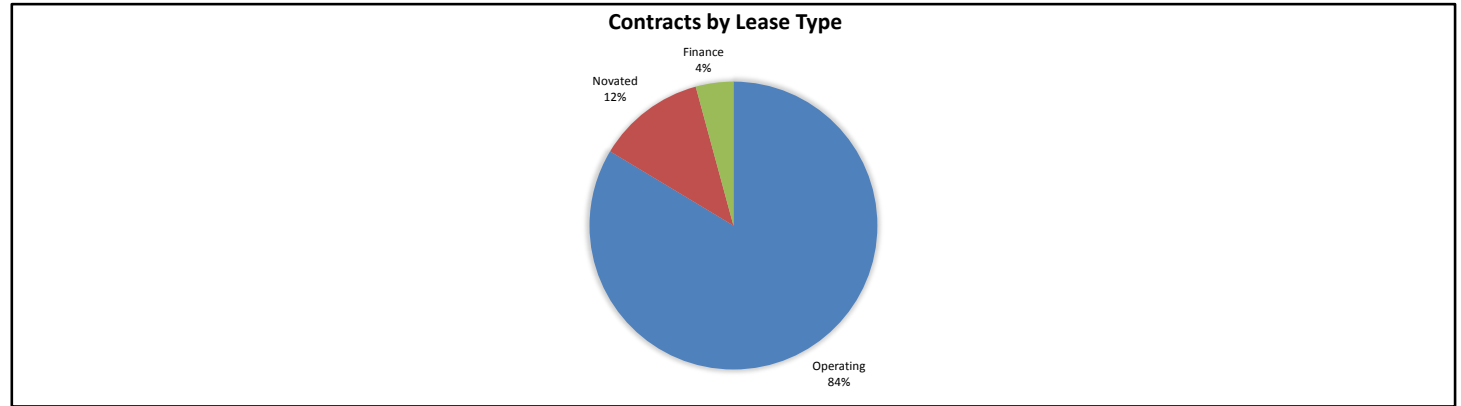
	Receivables Outstanding
1st Decile Upper Limit	\$ 220,357
2nd Decile Upper Limit	\$ 214,829
3rd Decile Upper Limit	\$ 214,707
4th Decile Upper Limit	\$ 214,665
5th Decile Upper Limit	\$ 214,273
6th Decile Upper Limit	\$ 212,231
7th Decile Upper Limit	\$ 209,018
8th Decile Upper Limit	\$ 208,901
9th Decile Upper Limit	\$ 208,805
10th Decile Upper Limit	\$ 208,606

**Top 10 Contract Aggregate Balance**

	Receivables Outstanding
Aggregate Balance- 1st Decile	\$ 220,357
Aggregate Balance- 2nd Decile	\$ 214,829
Aggregate Balance- 3rd Decile	\$ 214,707
Aggregate Balance- 4th Decile	\$ 214,665
Aggregate Balance- 5th Decile	\$ 214,273
Aggregate Balance- 6th Decile	\$ 212,231
Aggregate Balance- 7th Decile	\$ 209,018
Aggregate Balance- 8th Decile	\$ 417,802
Aggregate Balance- 9th Decile	\$ 208,805
Aggregate Balance- 10th Decile	\$ 625,818
<b>Total</b>	<b>\$ 2,752,504</b>

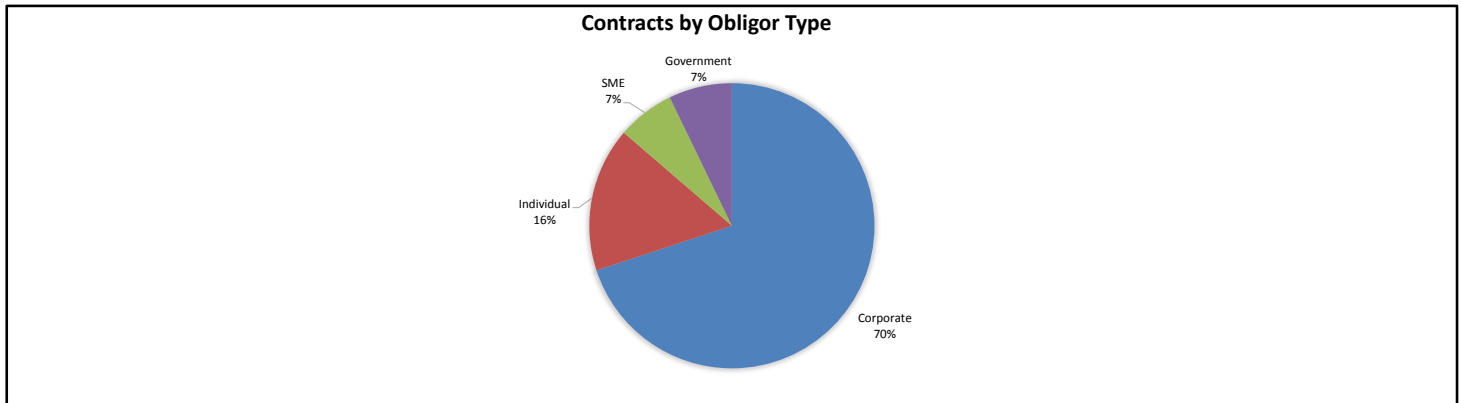
**Contracts by Lease Type**

Lease Type	Number of Contracts	(%) Number of Contracts	Receivables Outstanding	(%) Receivables Outstanding
Operating	5,699	84.12%	\$ 148,533,308	83.61%
Novated	761	11.23%	\$ 21,603,915	12.16%
Finance	315	4.65%	\$ 7,504,594	4.22%
<b>Total</b>	<b>6,775</b>	<b>100.00%</b>	<b>\$ 177,641,817</b>	<b>100.00%</b>



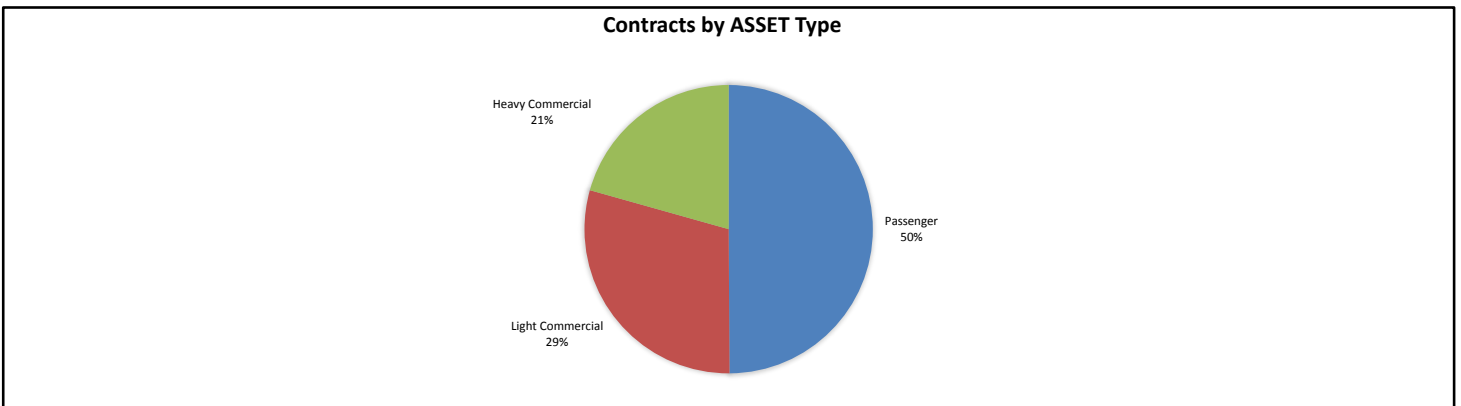
**Contracts by Obligor Type**

Obligor Type	Number of Contracts	(%) Number of Contracts	Receivables Outstanding	(%) Receivables Outstanding
Corporate	4,835	71.37%	\$ 124,219,787	69.93%
Individual	1,076	15.88%	\$ 29,108,509	16.39%
SME	594	8.77%	\$ 11,568,646	6.51%
Government	270	3.99%	\$ 12,744,875	7.17%
<b>Total</b>	<b>6,775</b>	<b>100.00%</b>	<b>\$ 177,641,817</b>	<b>100.00%</b>



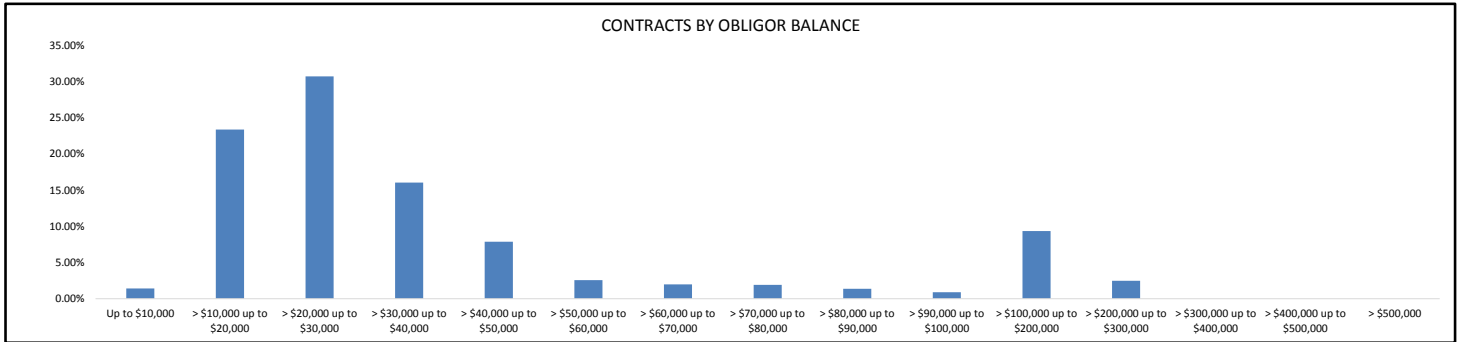
**Contracts by Asset Type**

Asset Type	Number of Contracts	(%) Number of Contracts	Receivables Outstanding	(%) Receivables Outstanding
Passenger	4,227	62.39%	\$ 88,658,434	49.91%
Light Commercial	2,048	30.23%	\$ 52,320,062	29.45%
Heavy Commercial	500	7.38%	\$ 36,663,320	20.64%
<b>Total</b>	<b>6,775</b>	<b>100.00%</b>	<b>\$ 177,641,817</b>	<b>100.00%</b>



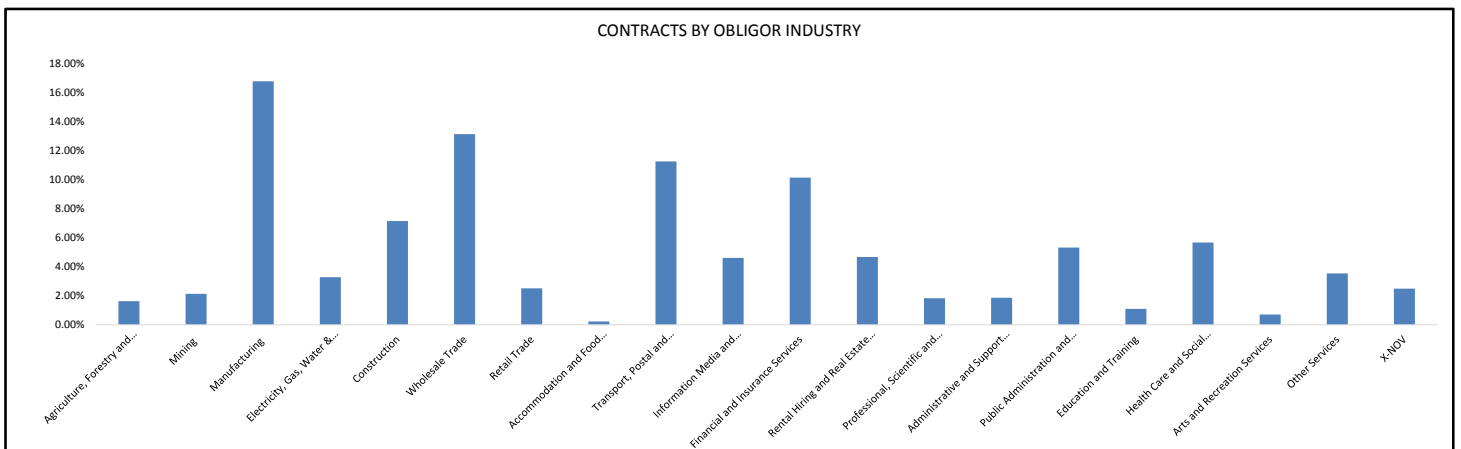
**Contracts by Obligor Balance**

Obligor Balance	Number of Contracts	(%) Number of Contracts	Receivables Outstanding	(%) Receivables Outstanding
Up to \$10,000	344	5.08%	\$ 2,520,574	1.42%
> \$10,000 up to \$20,000	2,705	39.93%	\$ 41,513,265	23.37%
> \$20,000 up to \$30,000	2,211	32.63%	\$ 54,583,080	30.73%
> \$30,000 up to \$40,000	829	12.24%	\$ 28,506,045	16.05%
> \$40,000 up to \$50,000	318	4.69%	\$ 13,992,077	7.88%
> \$50,000 up to \$60,000	83	1.23%	\$ 4,548,728	2.56%
> \$60,000 up to \$70,000	55	0.81%	\$ 3,524,890	1.98%
> \$70,000 up to \$80,000	45	0.66%	\$ 3,410,297	1.92%
> \$80,000 up to \$90,000	29	0.43%	\$ 2,442,253	1.37%
> \$90,000 up to \$100,000	17	0.25%	\$ 1,599,110	0.90%
> \$100,000 up to \$200,000	118	1.74%	\$ 16,613,585	9.35%
> \$200,000 up to \$300,000	21	0.31%	\$ 4,387,912	2.47%
> \$300,000 up to \$400,000	0	0.00%	\$ -	0.00%
> \$400,000 up to \$500,000	0	0.00%	\$ -	0.00%
> \$500,000	0	0.00%	\$ -	0.00%
<b>Total</b>	<b>6,775</b>	<b>100.00%</b>	<b>\$ 177,641,817</b>	<b>100.00%</b>



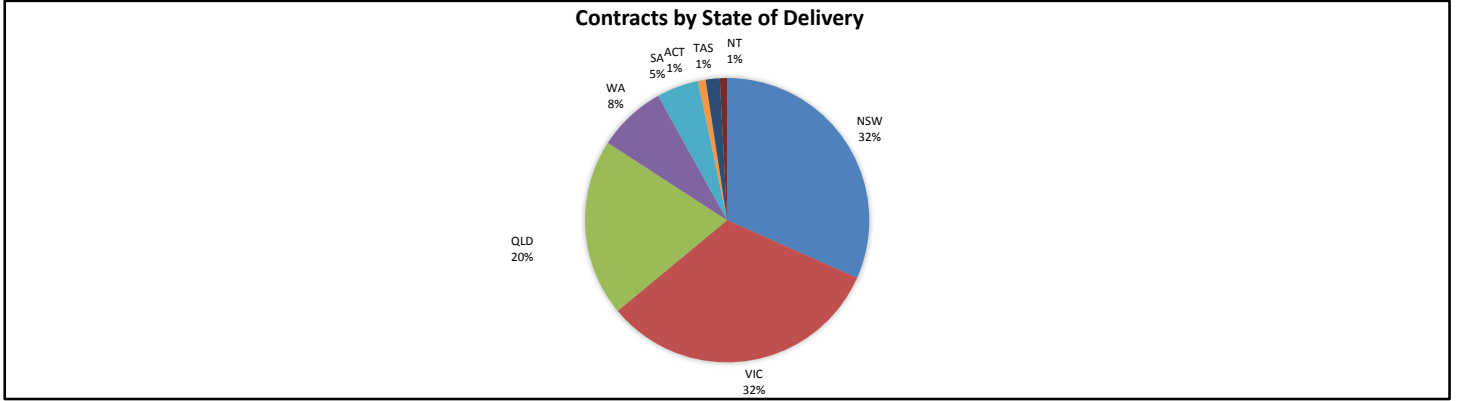
**Contracts by Obligor Industry**

Obligor Industry	Number of Contracts	(%) Number of Contracts	Receivables Outstanding	(%) Receivables Outstanding
ANZSIC Industry Division: Agriculture, Forestry and Fishing	110	1.62%	\$ 2,883,939	1.62%
ANZSIC Industry Division: Mining	133	1.96%	\$ 3,791,308	2.13%
ANZSIC Industry Division: Manufacturing	1,089	16.07%	\$ 29,807,569	16.78%
ANZSIC Industry Division: Electricity, Gas, Water and Waste Services	245	3.62%	\$ 5,820,832	3.28%
ANZSIC Industry Division: Construction	480	7.08%	\$ 12,686,599	7.14%
ANZSIC Industry Division: Wholesale Trade	943	13.92%	\$ 23,336,389	13.14%
ANZSIC Industry Division: Retail Trade	199	2.94%	\$ 4,461,536	2.51%
ANZSIC Industry Division: Accommodation and Food Services	20	0.30%	\$ 408,013	0.23%
ANZSIC Industry Division: Transport, Postal and Warehousing	400	5.90%	\$ 19,995,157	11.26%
ANZSIC Industry Division: Information Media and Telecommunications	367	5.42%	\$ 8,187,140	4.61%
ANZSIC Industry Division: Financial and Insurance Services	743	10.97%	\$ 18,017,713	10.14%
ANZSIC Industry Division: Rental, Hiring and Real Estate Services	428	6.32%	\$ 8,290,158	4.67%
ANZSIC Industry Division: Professional, Scientific and Technical Services	136	2.01%	\$ 3,250,644	1.83%
ANZSIC Industry Division: Administrative and Support Services	148	2.18%	\$ 3,304,766	1.86%
ANZSIC Industry Division: Public Administration and Safety	181	2.67%	\$ 9,441,827	5.32%
ANZSIC Industry Division: Education and Training	81	1.20%	\$ 1,937,279	1.09%
ANZSIC Industry Division: Health Care and Social Assistance	589	8.69%	\$ 10,069,774	5.67%
ANZSIC Industry Division: Arts and Recreational Services	66	0.97%	\$ 1,253,552	0.71%
Other Services	242	3.57%	\$ 6,278,839	3.53%
X-NOV	175	2.58%	\$ 4,418,783	2.49%
<b>Total</b>	<b>6,775</b>	<b>100.00%</b>	<b>\$ 177,641,817</b>	<b>100.00%</b>



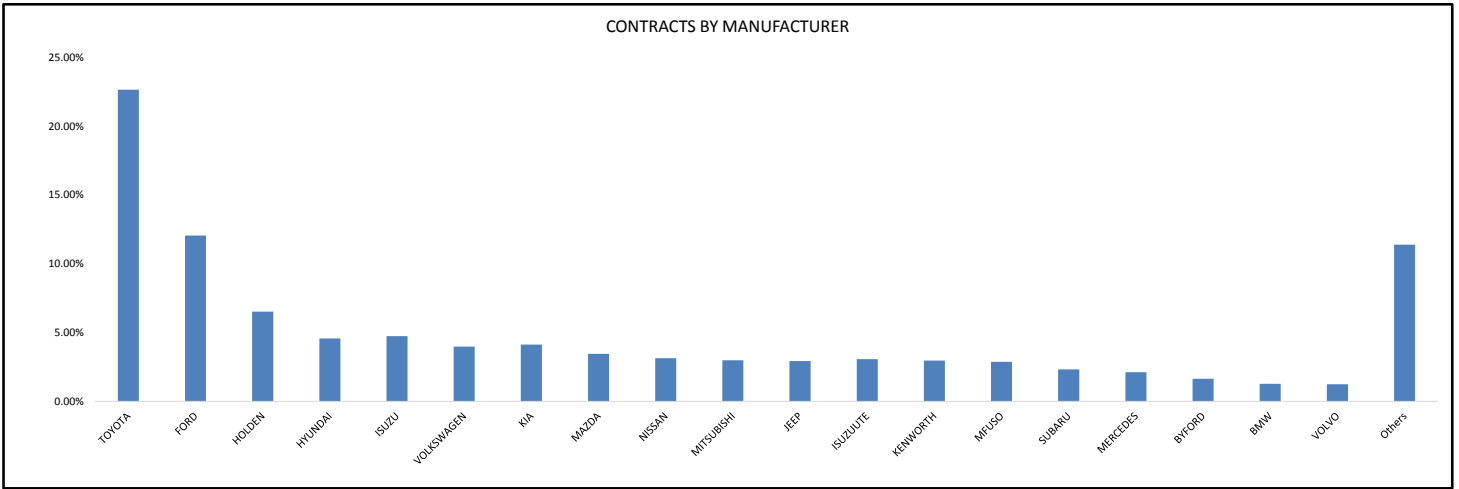
**Contracts by State of Delivery**

State of Delivery	Number of Contracts	(%) Number of Contracts	Receivables Outstanding	(%) Receivables Outstanding
NSW	1,989	29.36%	\$ 56,226,535	31.65%
VIC	2,186	32.27%	\$ 57,442,749	32.34%
QLD	1,414	20.87%	\$ 35,829,082	20.17%
WA	583	8.61%	\$ 13,818,840	7.78%
SA	368	5.43%	\$ 8,469,940	4.77%
ACT	63	0.93%	\$ 1,553,687	0.87%
TAS	120	1.77%	\$ 2,825,991	1.59%
NT	52	0.77%	\$ 1,474,993	0.83%
<b>Total</b>	<b>6,775</b>	<b>100.00%</b>	<b>\$ 177,641,817</b>	<b>100.00%</b>



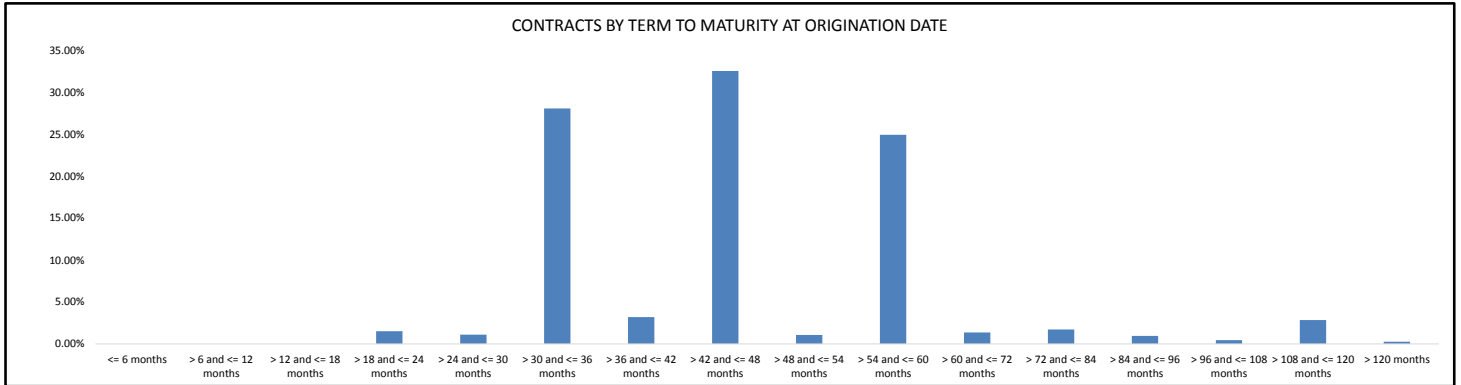
**Contracts by Manufacturer**

Manufacturer	Number of Contracts	(%) Number of Contracts	Receivables Outstanding	(%) Receivables Outstanding
TOYOTA	1,675	24.72%	\$ 40,221,159	22.64%
FORD	952	14.05%	\$ 21,387,657	12.04%
HOLDEN	589	8.69%	\$ 11,584,145	6.52%
HYUNDAI	469	6.92%	\$ 8,105,840	4.56%
ISUZU	135	1.99%	\$ 8,427,835	4.74%
VOLKSWAGEN	330	4.87%	\$ 7,057,144	3.97%
KIA	383	5.65%	\$ 7,334,744	4.13%
MAZDA	301	4.44%	\$ 6,140,844	3.46%
NISSAN	277	4.09%	\$ 5,571,128	3.14%
MITSUBISHI	266	3.93%	\$ 5,299,993	2.98%
JEEP	214	3.16%	\$ 5,209,611	2.93%
ISUZUUTE	201	2.97%	\$ 5,450,135	3.07%
KENWORTH	29	0.43%	\$ 5,258,249	2.96%
MFUSO	91	1.34%	\$ 5,104,747	2.87%
SUBARU	184	2.72%	\$ 4,121,238	2.32%
MERCEDES	84	1.24%	\$ 3,767,386	2.12%
BYFORD	21	0.31%	\$ 2,910,198	1.64%
BMW	52	0.77%	\$ 2,263,529	1.27%
VOLVO	26	0.38%	\$ 2,208,851	1.24%
Others	496	7.32%	\$ 20,217,383	11.38%
<b>Total</b>	<b>6,775</b>	<b>100.00%</b>	<b>\$ 177,641,817</b>	<b>100.00%</b>



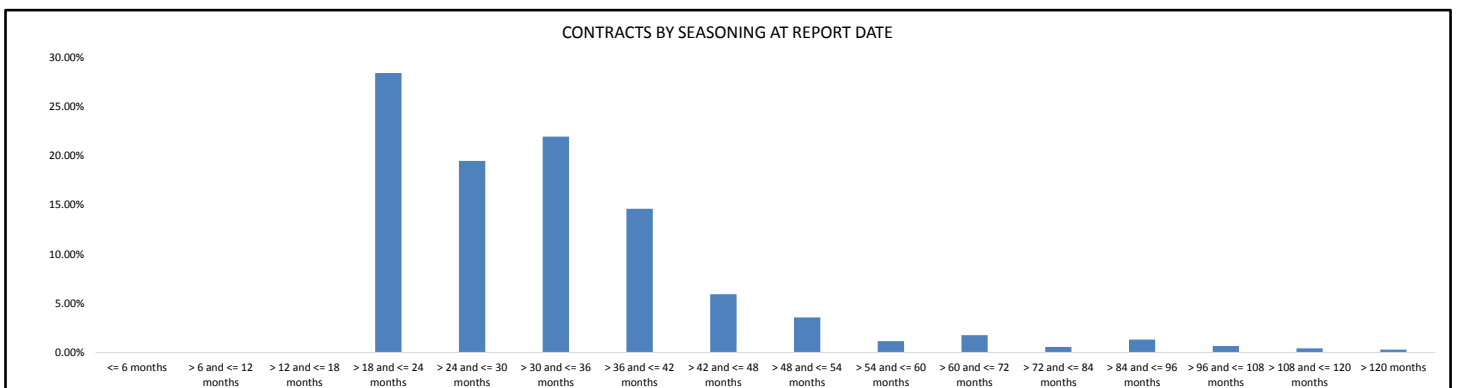
**Contracts by Term to Maturity at Origination Date**

Term to Maturity at Origination Date	Number of Contracts	(%) Number of Contracts	Receivables Outstanding	(%) Receivables Outstanding
<= 6 months	0	0.00%	\$ -	0.00%
> 6 and <= 12 months	0	0.00%	\$ -	0.00%
> 12 and <= 18 months	0	0.00%	\$ -	0.00%
> 18 and <= 24 months	151	2.23%	\$ 2,685,002	1.51%
> 24 and <= 30 months	97	1.43%	\$ 1,950,595	1.10%
> 30 and <= 36 months	2,304	34.01%	\$ 49,853,666	28.06%
> 36 and <= 42 months	327	4.83%	\$ 5,673,373	3.19%
> 42 and <= 48 months	2,351	34.70%	\$ 57,804,518	32.54%
> 48 and <= 54 months	123	1.82%	\$ 1,886,104	1.06%
> 54 and <= 60 months	1,138	16.80%	\$ 44,295,045	24.94%
> 60 and <= 72 months	99	1.46%	\$ 2,425,594	1.37%
> 72 and <= 84 months	62	0.92%	\$ 3,058,847	1.72%
> 84 and <= 96 months	37	0.55%	\$ 1,683,484	0.95%
> 96 and <= 108 months	18	0.27%	\$ 787,844	0.44%
> 108 and <= 120 months	56	0.83%	\$ 5,062,263	2.85%
> 120 months	12	0.18%	\$ 475,481	0.27%
<b>Total</b>	<b>6,775</b>	<b>100.00%</b>	<b>\$ 177,641,817</b>	<b>100.00%</b>



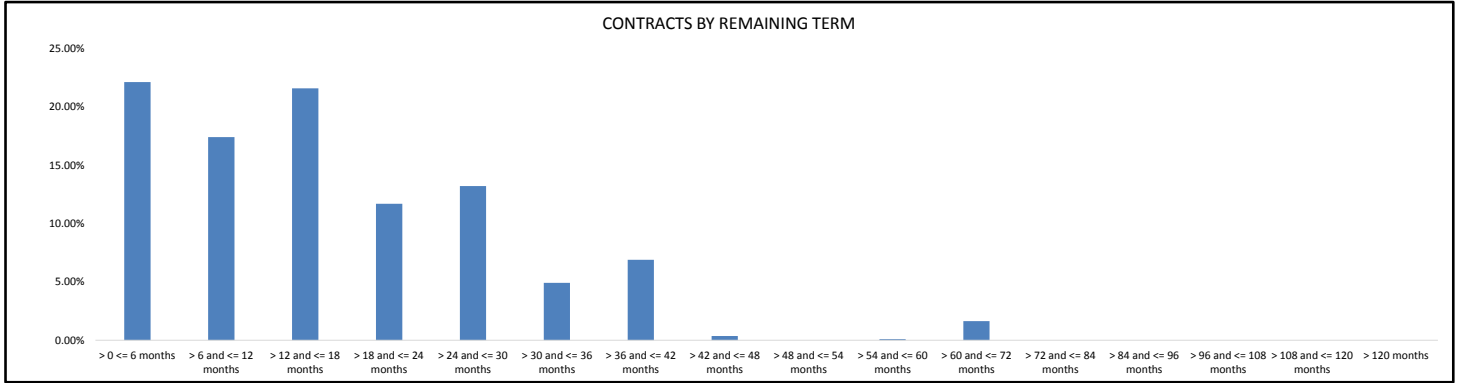
**Contracts by Seasoning at Report Date**

Seasoning at Report Date	Number of Contracts	(%) Number of Contracts	Receivables Outstanding	(%) Receivables Outstanding
<= 6 months	0	0.00%	\$ -	0.00%
> 6 and <= 12 months	0	0.00%	\$ -	0.00%
> 12 and <= 18 months	0	0.00%	\$ -	0.00%
> 18 and <= 24 months	1,637	24.16%	\$ 50,441,895	28.40%
> 24 and <= 30 months	1,338	19.75%	\$ 34,577,115	19.46%
> 30 and <= 36 months	1,670	24.65%	\$ 38,983,894	21.95%
> 36 and <= 42 months	1,102	16.27%	\$ 25,957,442	14.61%
> 42 and <= 48 months	529	7.81%	\$ 10,499,182	5.91%
> 48 and <= 54 months	184	2.72%	\$ 6,319,702	3.56%
> 54 and <= 60 months	76	1.12%	\$ 2,035,810	1.15%
> 60 and <= 72 months	105	1.55%	\$ 3,103,298	1.75%
> 72 and <= 84 months	35	0.52%	\$ 997,250	0.56%
> 84 and <= 96 months	49	0.72%	\$ 2,333,879	1.31%
> 96 and <= 108 months	21	0.31%	\$ 1,149,326	0.65%
> 108 and <= 120 months	16	0.24%	\$ 725,713	0.41%
> 120 months	13	0.19%	\$ 517,313	0.29%
<b>Total</b>	<b>6,775</b>	<b>100.00%</b>	<b>\$ 177,641,817</b>	<b>100.00%</b>



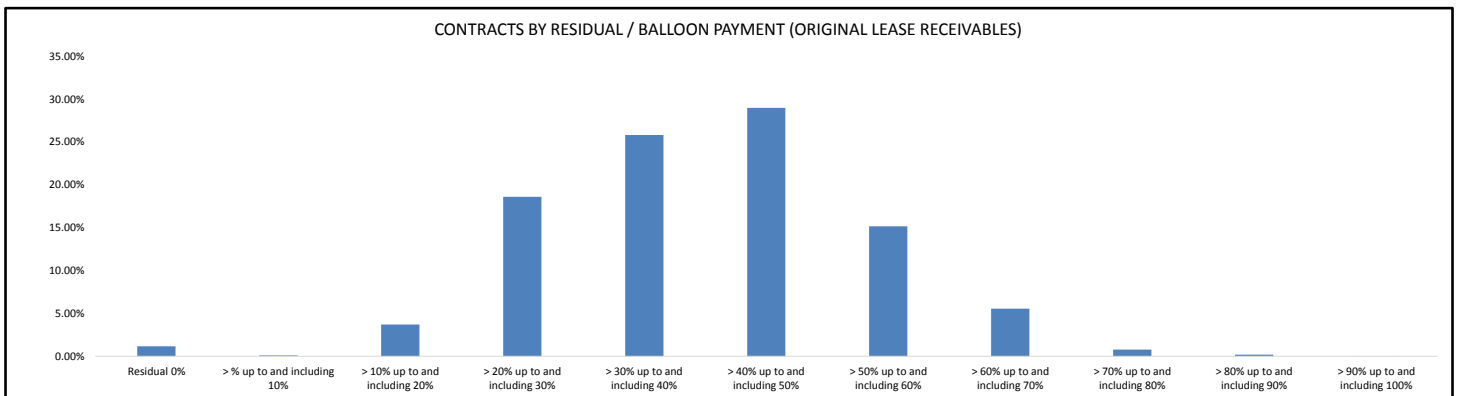
**Contracts by Remaining Term**

Remaining Term	Number of Contracts	(%) Number of Contracts	Receivables Outstanding	(%) Receivables Outstanding
> 0 <= 6 months	2,119	31.28%	\$ 39,322,989	22.14%
> 6 and <= 12 months	1,417	20.92%	\$ 30,935,994	17.41%
> 12 and <= 18 months	1,460	21.55%	\$ 38,379,469	21.60%
> 18 and <= 24 months	648	9.56%	\$ 20,782,876	11.70%
> 24 and <= 30 months	639	9.43%	\$ 23,497,227	13.23%
> 30 and <= 36 months	220	3.25%	\$ 8,746,544	4.92%
> 36 and <= 42 months	247	3.65%	\$ 12,269,539	6.91%
> 42 and <= 48 months	3	0.04%	\$ 641,211	0.36%
> 48 and <= 54 months	0	0.00%	\$ -	0.00%
> 54 and <= 60 months	1	0.01%	\$ 155,771	0.09%
> 60 and <= 72 months	21	0.31%	\$ 2,910,198	1.64%
> 72 and <= 84 months	0	0.00%	\$ -	0.00%
> 84 and <= 96 months	0	0.00%	\$ -	0.00%
> 96 and <= 108 months	0	0.00%	\$ -	0.00%
> 108 and <= 120 months	0	0.00%	\$ -	0.00%
> 120 months	0	0.00%	\$ -	0.00%
<b>Total</b>	<b>6,775</b>	<b>100.00%</b>	<b>\$ 177,641,817</b>	<b>100.00%</b>



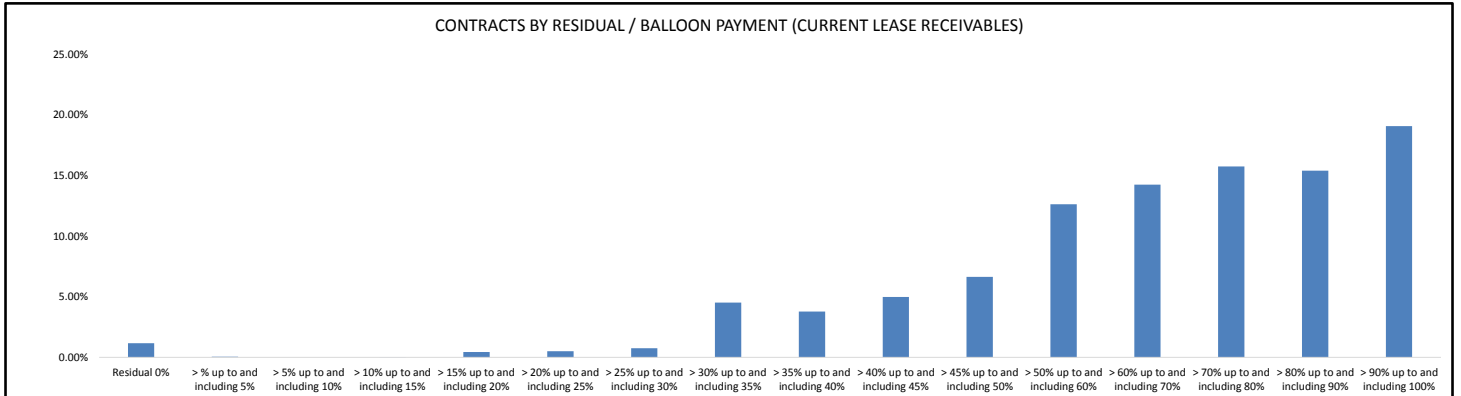
**Contracts by Residual/Balloon Payment (Original Lease Receivables)**

Residual/Balloon Payment (Original Lease Receivables)	Number of Contracts	(%) Number of Contracts	Receivables Outstanding	(%) Receivables Outstanding
Residual 0%	17	0.25%	\$ 2,073,882	1.17%
> % up to and including 10%	10	0.15%	\$ 159,544	0.09%
> 10% up to and including 20%	195	2.88%	\$ 6,588,825	3.71%
> 20% up to and including 30%	969	14.30%	\$ 33,020,424	18.59%
> 30% up to and including 40%	1,666	24.59%	\$ 45,823,235	25.80%
> 40% up to and including 50%	2,247	33.17%	\$ 51,460,213	28.97%
> 50% up to and including 60%	1,213	17.90%	\$ 26,922,936	15.16%
> 60% up to and including 70%	391	5.77%	\$ 9,847,879	5.54%
> 70% up to and including 80%	52	0.77%	\$ 1,385,090	0.78%
> 80% up to and including 90%	14	0.21%	\$ 341,544	0.19%
> 90% up to and including 100%	1	0.01%	\$ 18,244	0.01%
<b>Total</b>	<b>6,775</b>	<b>100.00%</b>	<b>\$ 177,641,817</b>	<b>100.00%</b>



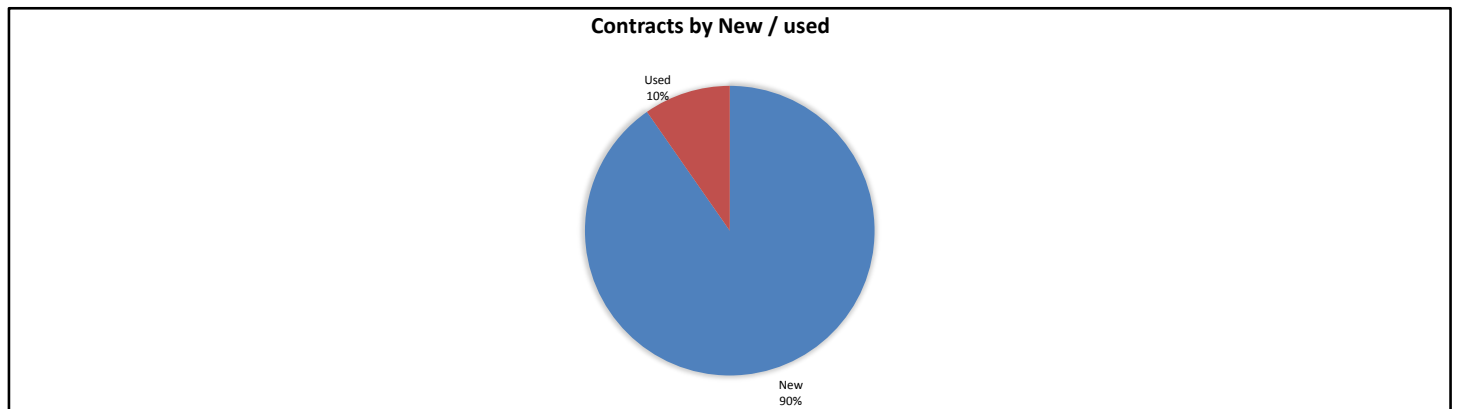
**Contracts by Residual/Balloon Payment (Current Lease Receivables)**

Residual/Balloon Payment (Current Lease Receivables)	Number of Contracts	(%) Number of Contracts	Receivables Outstanding	(%) Receivables Outstanding
Residual 0%	31	0.46%	\$ 2,073,882	1.17%
> % up to and including 5%	7	0.10%	\$ 88,894	0.05%
> 5% up to and including 10%	0	0.00%	\$ -	0.00%
> 10% up to and including 15%	1	0.01%	\$ 21,226	0.01%
> 15% up to and including 20%	7	0.10%	\$ 789,047	0.44%
> 20% up to and including 25%	18	0.27%	\$ 893,226	0.50%
> 25% up to and including 30%	28	0.41%	\$ 1,327,959	0.75%
> 30% up to and including 35%	150	2.21%	\$ 8,037,532	4.52%
> 35% up to and including 40%	185	2.73%	\$ 6,717,605	3.78%
> 40% up to and including 45%	255	3.76%	\$ 8,847,434	4.98%
> 45% up to and including 50%	306	4.52%	\$ 11,791,795	6.64%
> 50% up to and including 60%	699	10.32%	\$ 22,449,901	12.64%
> 60% up to and including 70%	931	13.74%	\$ 25,322,464	14.25%
> 70% up to and including 80%	1,193	17.61%	\$ 27,999,332	15.76%
> 80% up to and including 90%	1,205	17.79%	\$ 27,365,403	15.40%
> 90% up to and including 100%	1,759	25.96%	\$ 33,916,116	19.09%
<b>Total</b>	<b>6,775</b>	<b>100.00%</b>	<b>\$ 177,641,817</b>	<b>100.00%</b>



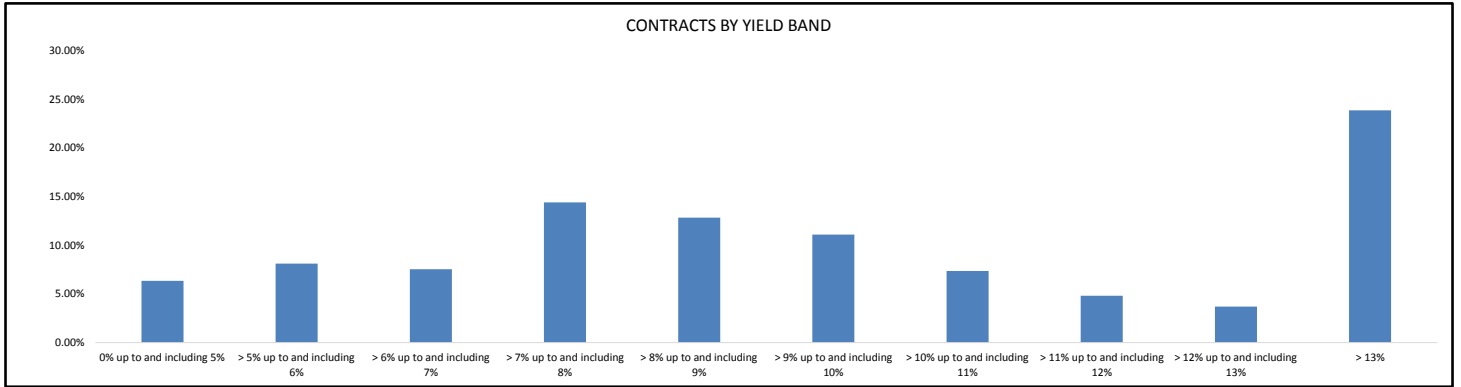
**Contracts by New / Used**

New / Used	Number of Contracts	(%) Number of Contracts	Receivables Outstanding	(%) Receivables Outstanding
New	6,253	92.30%	\$ 160,430,597	90.31%
Used	522	7.70%	\$ 17,211,219	9.69%
<b>Total</b>	<b>6,775</b>	<b>100.00%</b>	<b>\$ 177,641,817</b>	<b>100.00%</b>



**Contracts by Yield Band**

Yield Band	Number of Contracts	(%) Number of Contracts	Receivables Outstanding	(%) Receivables Outstanding
0% up to and including 5%	510	7.53%	\$ 11,273,997	6.35%
> 5% up to and including 6%	439	6.48%	\$ 14,404,350	8.11%
> 6% up to and including 7%	407	6.01%	\$ 13,384,335	7.53%
> 7% up to and including 8%	707	10.44%	\$ 25,565,319	14.39%
> 8% up to and including 9%	813	12.00%	\$ 22,786,704	12.83%
> 9% up to and including 10%	803	11.85%	\$ 19,699,703	11.09%
> 10% up to and including 11%	543	8.01%	\$ 13,057,522	7.35%
> 11% up to and including 12%	405	5.98%	\$ 8,540,214	4.81%
> 12% up to and including 13%	282	4.16%	\$ 6,564,881	3.70%
> 13%	1,866	27.54%	\$ 42,364,794	23.85%
<b>Total</b>	<b>6,775</b>	<b>100.00%</b>	<b>\$ 177,641,817</b>	<b>100.00%</b>



**Contracts by Interest Rate**

Interest Rate	Number of Contracts	(%) Number of Contracts	Receivables Outstanding	(%) Receivables Outstanding
0%	0	0.00%	\$ -	0.00%
> 0% up to and including 2%	0	0.00%	\$ -	0.00%
> 2% up to and including 4%	153	2.26%	\$ 3,419,780	1.93%
> 4% up to and including 6%	1,295	19.11%	\$ 37,976,726	21.38%
> 6% up to and including 8%	4,550	67.16%	\$ 114,265,240	64.32%
> 8% up to and including 10%	649	9.58%	\$ 17,849,010	10.05%
> 10% up to and including 12%	98	1.45%	\$ 2,325,400	1.31%
> 12% up to and including 14%	27	0.40%	\$ 1,701,193	0.96%
> 14% up to and including 16%	3	0.04%	\$ 104,468	0.06%
> 16% up to and including 18%	0	0.00%	\$ -	0.00%
> 18% up to and including 20%	0	0.00%	\$ -	0.00%
> 20%	0	0.00%	\$ -	0.00%
<b>Total</b>	<b>6,775</b>	<b>100.00%</b>	<b>\$ 177,641,817</b>	<b>100.00%</b>

