



FP Turbo Series 2016-1 Trust as at 30 June 2018

Portfolio Summary	
Portfolio size	\$ 162,850,394.71
Number of contracts	6,338
Number of obligors	814
Weighted average yield (p.a.)	10.50%
Average contract balance (current)	\$ 25,694.29
Maximum contract balance (current)	\$ 211,232.82
Average contract balance (original)	\$ 45,794.00
Maximum contract balance (original)	\$ 487,571.03
Weighted average total contract term (months)	51.09
Weighted average seasoning (months)	35.12
Weighted average remaining term (months)	15.97
Maximum remaining term (months)	64.08
Weighted average residual (current)	60.43%
Weighted average residual (original)	33.69%
Weighted average balloon percentage	69.95%
Balloon payments contract balance	\$ 160,833,352.48
Balloon payments contract count	6,302
Balloon payments value	\$ 113,908,805.25
Maximum balloon payment	\$ 189,486.36
Maximum contract balance	\$ 207,082.04

Top 10 Obligor

Customer Code	Number of Contracts	(%) Number of Contracts	Receivables Outstanding	(%) Receivables Outstanding
AAN0481	500	7.89%	\$ 11,909,490	7.31%
ARO0130	85	1.34%	\$ 7,118,925	4.37%
AAG0025	260	4.10%	\$ 6,939,500	4.26%
ARI0248	339	5.35%	\$ 6,442,314	3.96%
ATE0041	282	4.45%	\$ 5,979,627	3.67%
AMU0167	118	1.86%	\$ 5,857,430	3.60%
ASP0122	29	0.46%	\$ 3,577,824	2.20%
ATS0013	150	2.37%	\$ 3,455,755	2.12%
ARA0071	80	1.26%	\$ 3,043,451	1.87%
AGI0035	77	1.21%	\$ 2,331,485	1.43%
Total	1,920	30.29%	\$ 56,655,802	34.79%

Top 10 Contract Balance

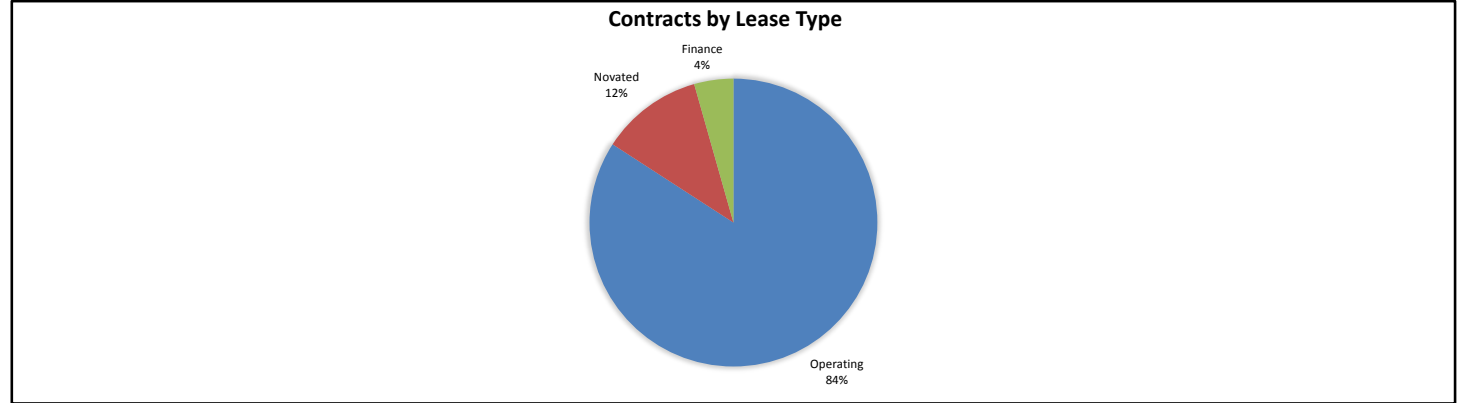
	Receivables Outstanding
1st Decile Upper Limit	\$ 211,233
2nd Decile Upper Limit	\$ 208,938
3rd Decile Upper Limit	\$ 208,520
4th Decile Upper Limit	\$ 208,183
5th Decile Upper Limit	\$ 207,270
6th Decile Upper Limit	\$ 207,082
7th Decile Upper Limit	\$ 206,888
8th Decile Upper Limit	\$ 206,556
9th Decile Upper Limit	\$ 202,247
10th Decile Upper Limit	\$ 201,902

Top 10 Contract Aggregate Balance

	Receivables Outstanding
Aggregate Balance- 1st Decile	\$ 211,233
Aggregate Balance- 2nd Decile	\$ 208,938
Aggregate Balance- 3rd Decile	\$ 208,520
Aggregate Balance- 4th Decile	\$ 208,183
Aggregate Balance- 5th Decile	\$ 207,270
Aggregate Balance- 6th Decile	\$ 207,082
Aggregate Balance- 7th Decile	\$ 206,888
Aggregate Balance- 8th Decile	\$ 206,556
Aggregate Balance- 9th Decile	\$ 404,494
Aggregate Balance- 10th Decile	\$ 605,707
Total	\$ 2,674,870

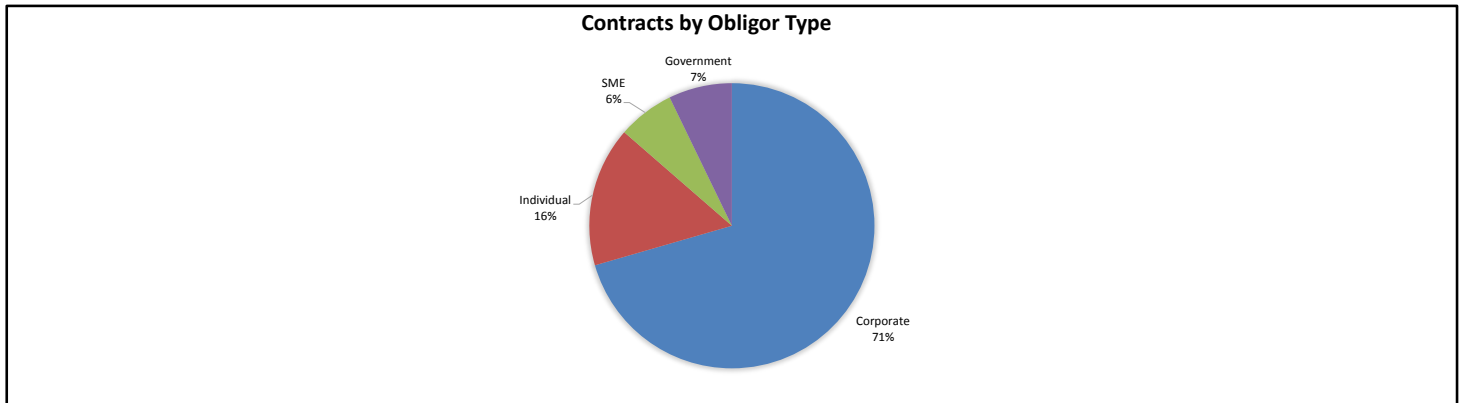
Contracts by Lease Type

Lease Type	Number of Contracts	(%) Number of Contracts	Receivables Outstanding	(%) Receivables Outstanding
Operating	5,356	84.51%	\$ 137,028,343	84.14%
Novated	674	10.63%	\$ 18,652,432	11.45%
Finance	308	4.86%	\$ 7,169,620	4.40%
Total	6,338	100.00%	\$ 162,850,395	100.00%



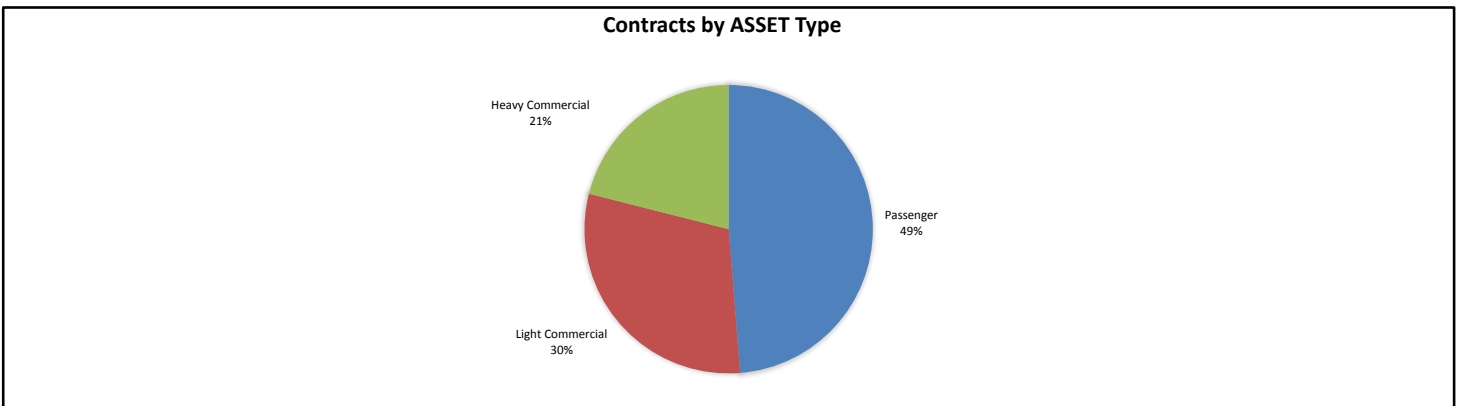
Contracts by Obligor Type

Obligor Type	Number of Contracts	(%) Number of Contracts	Receivables Outstanding	(%) Receivables Outstanding
Corporate	4,561	71.96%	\$ 114,855,684	70.53%
Individual	982	15.49%	\$ 25,822,051	15.86%
SME	555	8.76%	\$ 10,470,445	6.43%
Government	240	3.79%	\$ 11,702,214	7.19%
Total	6,338	100.00%	\$ 162,850,395	100.00%



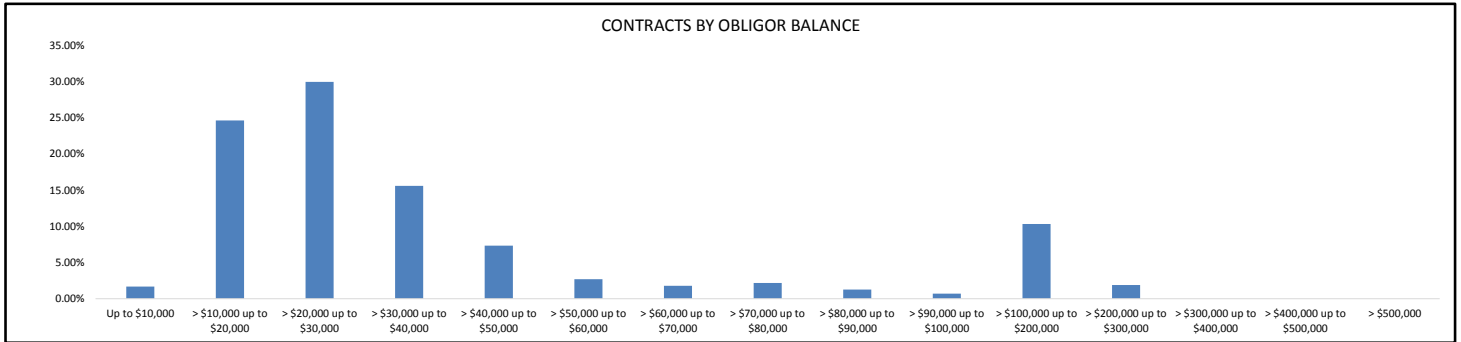
Contracts by Asset Type

Asset Type	Number of Contracts	(%) Number of Contracts	Receivables Outstanding	(%) Receivables Outstanding
Passenger	3,898	61.50%	\$ 79,341,783	48.72%
Light Commercial	1,958	30.89%	\$ 49,234,288	30.23%
Heavy Commercial	482	7.60%	\$ 34,274,323	21.05%
Total	6,338	100.00%	\$ 162,850,395	100.00%



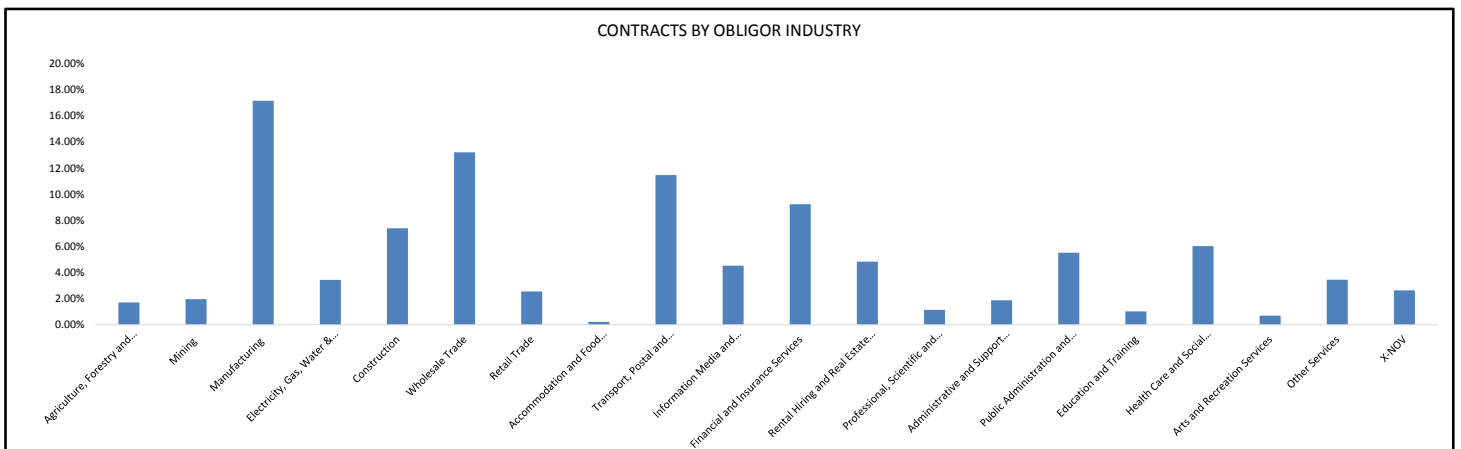
Contracts by Obligor Balance

Obligor Balance	Number of Contracts	(%) Number of Contracts	Receivables Outstanding	(%) Receivables Outstanding
Up to \$10,000	383	6.04%	\$ 2,719,751	1.67%
> \$10,000 up to \$20,000	2,617	41.29%	\$ 40,100,812	24.62%
> \$20,000 up to \$30,000	1,979	31.22%	\$ 48,795,103	29.96%
> \$30,000 up to \$40,000	742	11.71%	\$ 25,389,150	15.59%
> \$40,000 up to \$50,000	274	4.32%	\$ 11,955,187	7.34%
> \$50,000 up to \$60,000	80	1.26%	\$ 4,374,907	2.69%
> \$60,000 up to \$70,000	45	0.71%	\$ 2,899,365	1.78%
> \$70,000 up to \$80,000	47	0.74%	\$ 3,534,085	2.17%
> \$80,000 up to \$90,000	24	0.38%	\$ 2,044,086	1.26%
> \$90,000 up to \$100,000	12	0.19%	\$ 1,131,382	0.69%
> \$100,000 up to \$200,000	120	1.89%	\$ 16,828,858	10.33%
> \$200,000 up to \$300,000	15	0.24%	\$ 3,077,708	1.89%
> \$300,000 up to \$400,000	0	0.00%	\$ -	0.00%
> \$400,000 up to \$500,000	0	0.00%	\$ -	0.00%
> \$500,000	0	0.00%	\$ -	0.00%
Total	6,338	100.00%	\$ 162,850,395	100.00%



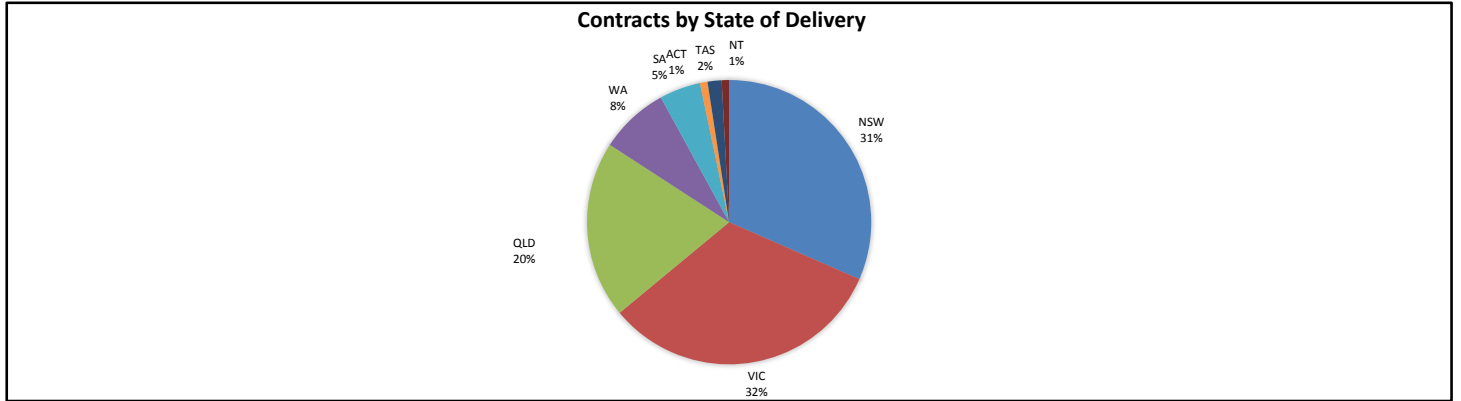
Contracts by Obligor Industry

Obligor Industry	Number of Contracts	(%) Number of Contracts	Receivables Outstanding	(%) Receivables Outstanding
ANZSIC Industry Division: Agriculture, Forestry and Fishing	109	1.72%	\$ 2,786,799	1.71%
ANZSIC Industry Division: Mining	111	1.75%	\$ 3,188,734	1.96%
ANZSIC Industry Division: Manufacturing	1,039	16.39%	\$ 27,933,001	17.15%
ANZSIC Industry Division: Electricity, Gas, Water and Waste Services	243	3.83%	\$ 5,606,918	3.44%
ANZSIC Industry Division: Construction	472	7.45%	\$ 12,027,926	7.39%
ANZSIC Industry Division: Wholesale Trade	879	13.87%	\$ 21,495,453	13.20%
ANZSIC Industry Division: Retail Trade	190	3.00%	\$ 4,152,233	2.55%
ANZSIC Industry Division: Accommodation and Food Services	17	0.27%	\$ 347,351	0.21%
ANZSIC Industry Division: Transport, Postal and Warehousing	371	5.85%	\$ 18,657,007	11.46%
ANZSIC Industry Division: Information Media and Telecommunications	343	5.41%	\$ 7,363,754	4.52%
ANZSIC Industry Division: Financial and Insurance Services	635	10.02%	\$ 15,024,852	9.23%
ANZSIC Industry Division: Rental, Hiring and Real Estate Services	417	6.58%	\$ 7,861,902	4.83%
ANZSIC Industry Division: Professional, Scientific and Technical Services	76	1.20%	\$ 1,853,881	1.14%
ANZSIC Industry Division: Administrative and Support Services	142	2.24%	\$ 3,057,102	1.88%
ANZSIC Industry Division: Public Administration and Safety	179	2.82%	\$ 8,989,139	5.52%
ANZSIC Industry Division: Education and Training	69	1.09%	\$ 1,660,654	1.02%
ANZSIC Industry Division: Health Care and Social Assistance	584	9.21%	\$ 9,803,909	6.02%
ANZSIC Industry Division: Arts and Recreational Services	63	0.99%	\$ 1,137,643	0.70%
Other Services	224	3.53%	\$ 5,613,947	3.45%
X-NOV	175	2.76%	\$ 4,288,189	2.63%
Total	6,338	100.00%	\$ 162,850,395	100.00%



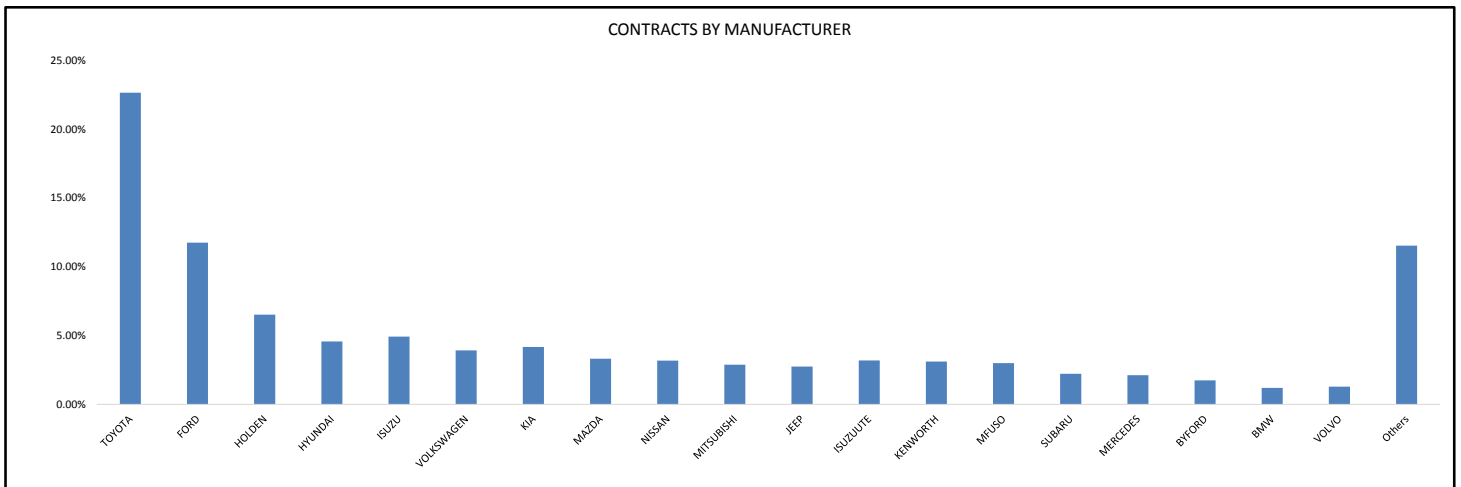
Contracts by State of Delivery

State of Delivery	Number of Contracts	(%) Number of Contracts	Receivables Outstanding	(%) Receivables Outstanding
NSW	1,834	28.94%	\$ 51,400,787	31.56%
VIC	2,064	32.57%	\$ 52,811,928	32.43%
QLD	1,329	20.97%	\$ 32,838,522	20.16%
WA	559	8.82%	\$ 12,810,521	7.87%
SA	336	5.30%	\$ 7,616,576	4.68%
ACT	55	0.87%	\$ 1,401,114	0.86%
TAS	111	1.75%	\$ 2,605,013	1.60%
NT	50	0.79%	\$ 1,365,932	0.84%
Total	6,338	100.00%	\$ 162,850,395	100.00%



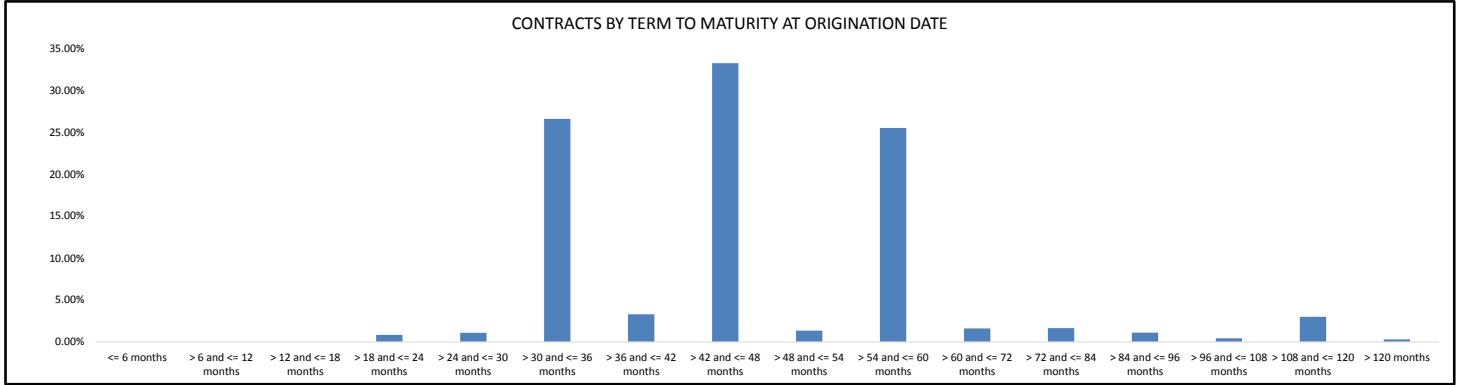
Contracts by Manufacturer

Manufacturer	Number of Contracts	(%) Number of Contracts	Receivables Outstanding	(%) Receivables Outstanding
TOYOTA	1,570	24.77%	\$ 36,870,005	22.64%
FORD	867	13.68%	\$ 19,126,570	11.74%
HOLDEN	564	8.90%	\$ 10,605,774	6.51%
HYUNDAI	445	7.02%	\$ 7,431,577	4.56%
ISUZU	133	2.10%	\$ 8,022,434	4.93%
VOLKSWAGEN	308	4.86%	\$ 6,383,849	3.92%
KIA	364	5.74%	\$ 6,790,333	4.17%
MAZDA	272	4.29%	\$ 5,402,050	3.32%
NISSAN	268	4.23%	\$ 5,175,226	3.18%
MITSUBISHI	236	3.72%	\$ 4,690,857	2.88%
JEEP	180	2.84%	\$ 4,466,887	2.74%
ISUZUUTE	197	3.11%	\$ 5,190,018	3.19%
KENWORTH	29	0.46%	\$ 5,073,963	3.12%
MFUSO	90	1.42%	\$ 4,880,990	3.00%
SUBARU	168	2.65%	\$ 3,622,972	2.22%
MERCEDES	80	1.26%	\$ 3,446,275	2.12%
BYFORD	21	0.33%	\$ 2,841,601	1.74%
BMW	46	0.73%	\$ 1,956,503	1.20%
VOLVO	26	0.41%	\$ 2,097,550	1.29%
Others	474	7.48%	\$ 18,774,959	11.53%
Total	6,338	100.00%	\$ 162,850,395	100.00%



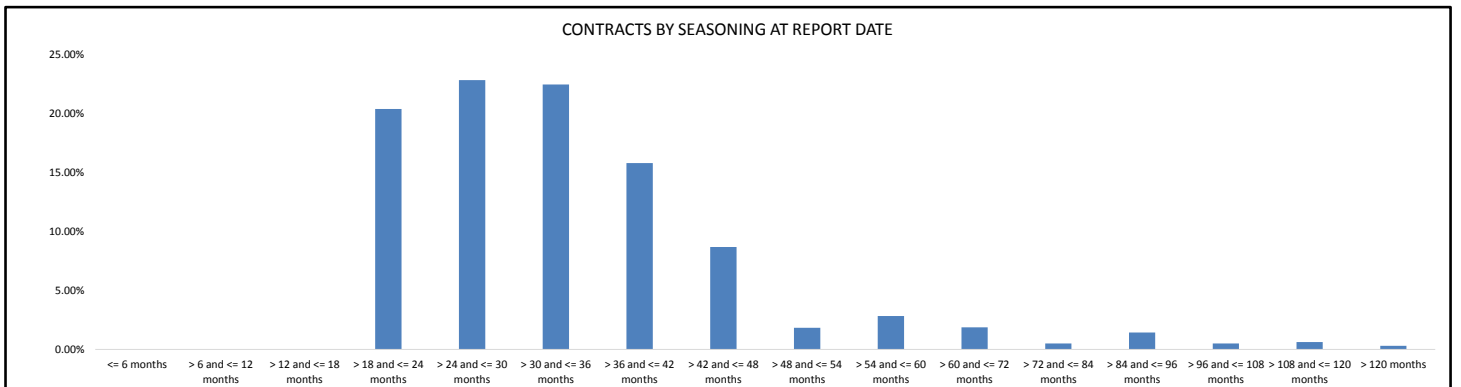
Contracts by Term to Maturity at Origination Date

Term to Maturity at Origination Date	Number of Contracts	(%) Number of Contracts	Receivables Outstanding	(%) Receivables Outstanding
<= 6 months	0	0.00%	\$ -	0.00%
> 6 and <= 12 months	0	0.00%	\$ -	0.00%
> 12 and <= 18 months	0	0.00%	\$ -	0.00%
> 18 and <= 24 months	92	1.45%	\$ 1,383,744	0.85%
> 24 and <= 30 months	84	1.33%	\$ 1,773,476	1.09%
> 30 and <= 36 months	2,051	32.36%	\$ 43,307,499	26.59%
> 36 and <= 42 months	300	4.73%	\$ 5,373,358	3.30%
> 42 and <= 48 months	2,290	36.13%	\$ 54,118,422	33.23%
> 48 and <= 54 months	143	2.26%	\$ 2,190,781	1.35%
> 54 and <= 60 months	1,103	17.40%	\$ 41,556,213	25.52%
> 60 and <= 72 months	94	1.48%	\$ 2,610,260	1.60%
> 72 and <= 84 months	53	0.84%	\$ 2,692,008	1.65%
> 84 and <= 96 months	44	0.69%	\$ 1,796,090	1.10%
> 96 and <= 108 months	15	0.24%	\$ 692,315	0.43%
> 108 and <= 120 months	56	0.88%	\$ 4,871,628	2.99%
> 120 months	13	0.21%	\$ 484,600	0.30%
Total	6,338	100.00%	\$ 162,850,395	100.00%



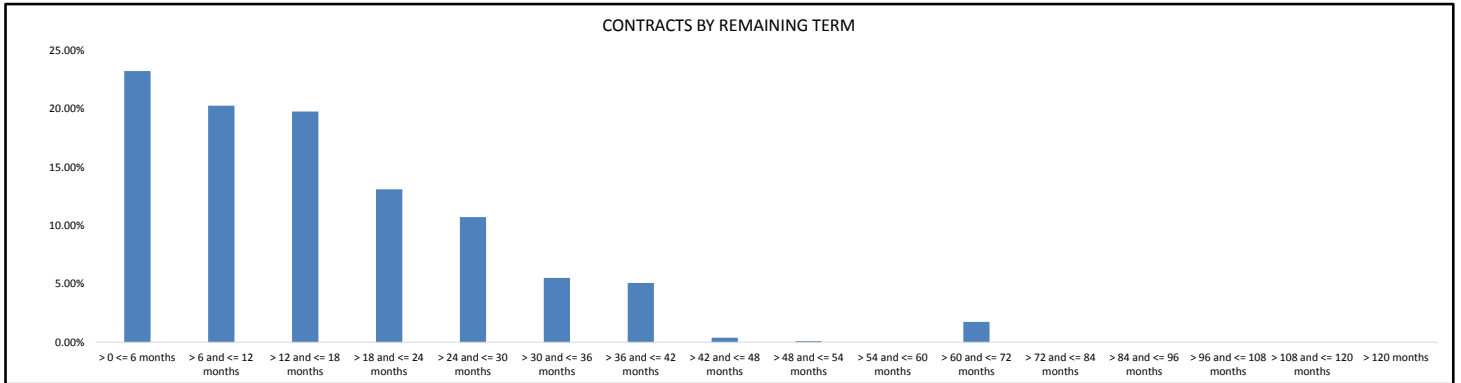
Contracts by Seasoning at Report Date

Seasoning at Report Date	Number of Contracts	(%) Number of Contracts	Receivables Outstanding	(%) Receivables Outstanding
<= 6 months	0	0.00%	\$ -	0.00%
> 6 and <= 12 months	0	0.00%	\$ -	0.00%
> 12 and <= 18 months	0	0.00%	\$ -	0.00%
> 18 and <= 24 months	1,062	16.76%	\$ 33,169,153	20.37%
> 24 and <= 30 months	1,419	22.39%	\$ 37,170,259	22.82%
> 30 and <= 36 months	1,610	25.40%	\$ 36,545,255	22.44%
> 36 and <= 42 months	1,056	16.66%	\$ 25,715,040	15.79%
> 42 and <= 48 months	709	11.19%	\$ 14,120,373	8.67%
> 48 and <= 54 months	162	2.56%	\$ 2,990,733	1.84%
> 54 and <= 60 months	87	1.37%	\$ 4,603,260	2.83%
> 60 and <= 72 months	100	1.58%	\$ 3,052,275	1.87%
> 72 and <= 84 months	29	0.46%	\$ 818,986	0.50%
> 84 and <= 96 months	55	0.87%	\$ 2,338,937	1.44%
> 96 and <= 108 months	15	0.24%	\$ 823,163	0.51%
> 108 and <= 120 months	21	0.33%	\$ 1,018,361	0.63%
> 120 months	13	0.21%	\$ 484,600	0.30%
Total	6,338	100.00%	\$ 162,850,395	100.00%



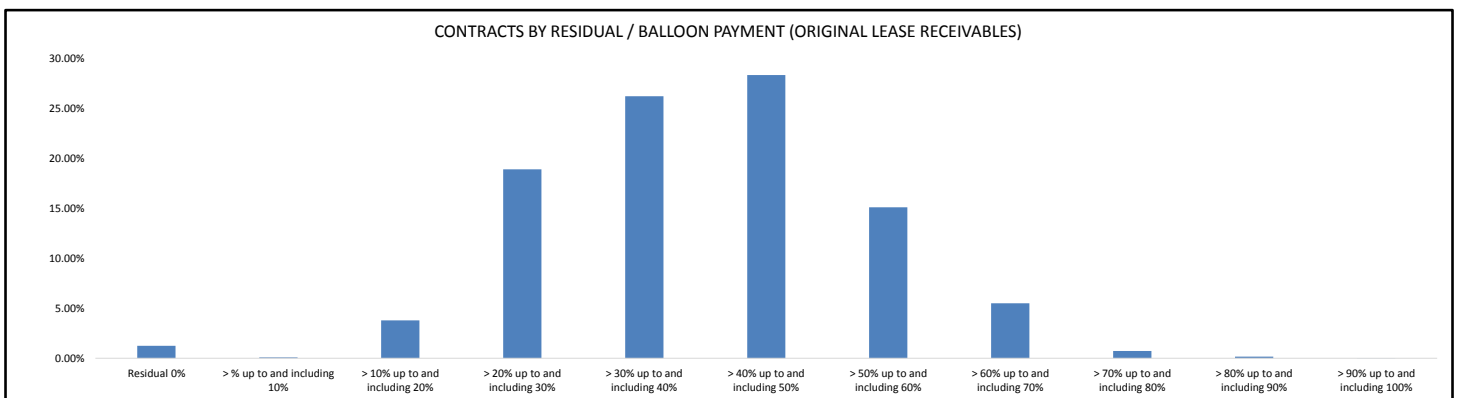
Contracts by Remaining Term

Remaining Term	Number of Contracts	(%) Number of Contracts	Receivables Outstanding	(%) Receivables Outstanding
> 0 <= 6 months	2,087	32.93%	\$ 37,872,543	23.26%
> 6 and <= 12 months	1,492	23.54%	\$ 33,026,205	20.28%
> 12 and <= 18 months	1,227	19.36%	\$ 32,223,598	19.79%
> 18 and <= 24 months	638	10.07%	\$ 21,362,549	13.12%
> 24 and <= 30 months	491	7.75%	\$ 17,477,619	10.73%
> 30 and <= 36 months	220	3.47%	\$ 8,991,043	5.52%
> 36 and <= 42 months	158	2.49%	\$ 8,278,721	5.08%
> 42 and <= 48 months	3	0.05%	\$ 624,013	0.38%
> 48 and <= 54 months	1	0.02%	\$ 152,503	0.09%
> 54 and <= 60 months	0	0.00%	\$ -	0.00%
> 60 and <= 72 months	21	0.33%	\$ 2,841,601	1.74%
> 72 and <= 84 months	0	0.00%	\$ -	0.00%
> 84 and <= 96 months	0	0.00%	\$ -	0.00%
> 96 and <= 108 months	0	0.00%	\$ -	0.00%
> 108 and <= 120 months	0	0.00%	\$ -	0.00%
> 120 months	0	0.00%	\$ -	0.00%
Total	6,338	100.00%	\$ 162,850,395	100.00%



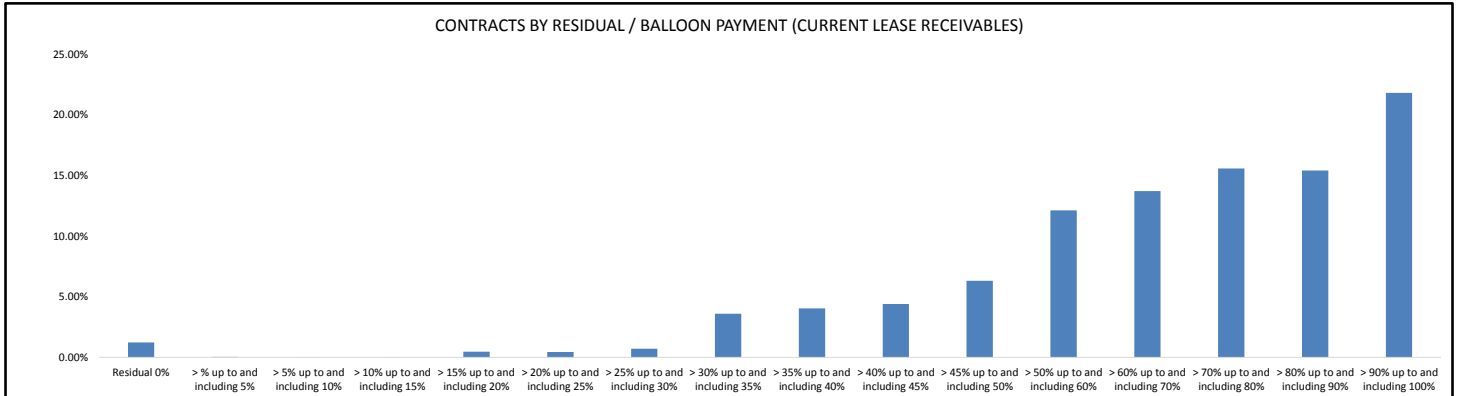
Contracts by Residual/Balloon Payment (Original Lease Receivables)

Residual/Balloon Payment (Original Lease Receivables)	Number of Contracts	(%) Number of Contracts	Receivables Outstanding	(%) Receivables Outstanding
Residual 0%	17	0.27%	\$ 2,017,042	1.24%
> % up to and including 10%	10	0.16%	\$ 138,019	0.08%
> 10% up to and including 20%	190	3.00%	\$ 6,175,745	3.79%
> 20% up to and including 30%	926	14.61%	\$ 30,764,759	18.89%
> 30% up to and including 40%	1,592	25.12%	\$ 42,654,530	26.19%
> 40% up to and including 50%	2,041	32.20%	\$ 46,112,311	28.32%
> 50% up to and including 60%	1,138	17.96%	\$ 24,572,583	15.09%
> 60% up to and including 70%	366	5.77%	\$ 8,946,214	5.49%
> 70% up to and including 80%	46	0.73%	\$ 1,194,958	0.73%
> 80% up to and including 90%	11	0.17%	\$ 256,014	0.16%
> 90% up to and including 100%	1	0.02%	\$ 18,220	0.01%
Total	6,338	100.00%	\$ 162,850,395	100.00%



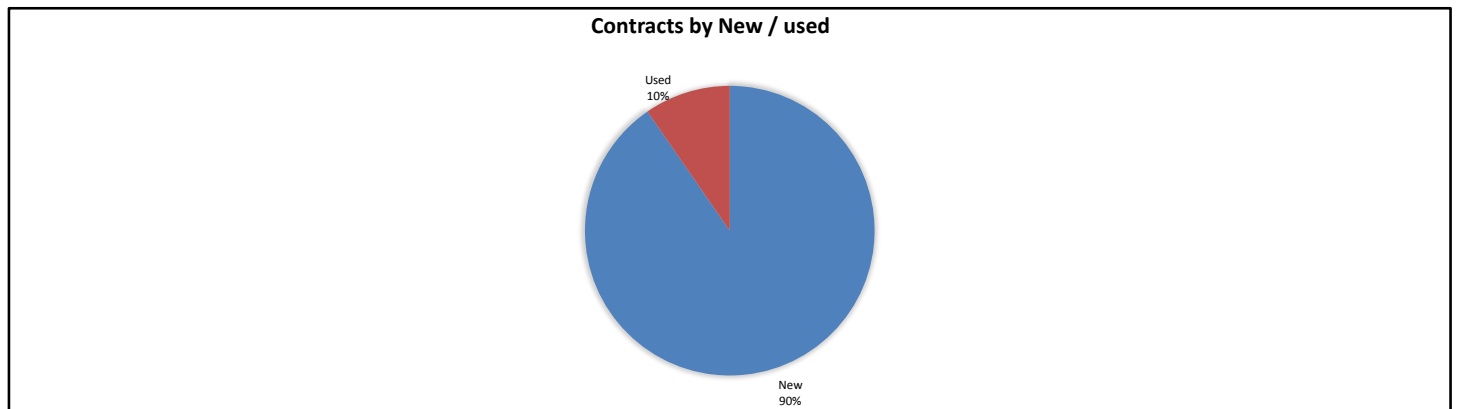
Contracts by Residual/Balloon Payment (Current Lease Receivables)

Residual/Balloon Payment (Current Lease Receivables)	Number of Contracts	(%) Number of Contracts	Receivables Outstanding	(%) Receivables Outstanding
Residual 0%	36	0.57%	\$ 2,017,042	1.24%
> % up to and including 5%	5	0.08%	\$ 62,633	0.04%
> 5% up to and including 10%	1	0.02%	\$ 6,060	0.00%
> 10% up to and including 15%	1	0.02%	\$ 20,327	0.01%
> 15% up to and including 20%	6	0.09%	\$ 767,099	0.47%
> 20% up to and including 25%	13	0.21%	\$ 726,172	0.45%
> 25% up to and including 30%	26	0.41%	\$ 1,169,607	0.72%
> 30% up to and including 35%	114	1.80%	\$ 5,860,747	3.60%
> 35% up to and including 40%	164	2.59%	\$ 6,580,084	4.04%
> 40% up to and including 45%	215	3.39%	\$ 7,174,678	4.41%
> 45% up to and including 50%	278	4.39%	\$ 10,289,670	6.32%
> 50% up to and including 60%	597	9.42%	\$ 19,752,112	12.13%
> 60% up to and including 70%	813	12.83%	\$ 22,362,323	13.73%
> 70% up to and including 80%	1,108	17.48%	\$ 25,383,194	15.59%
> 80% up to and including 90%	1,129	17.81%	\$ 25,122,974	15.43%
> 90% up to and including 100%	1,832	28.91%	\$ 35,555,672	21.83%
Total	6,338	100.00%	\$ 162,850,395	100.00%



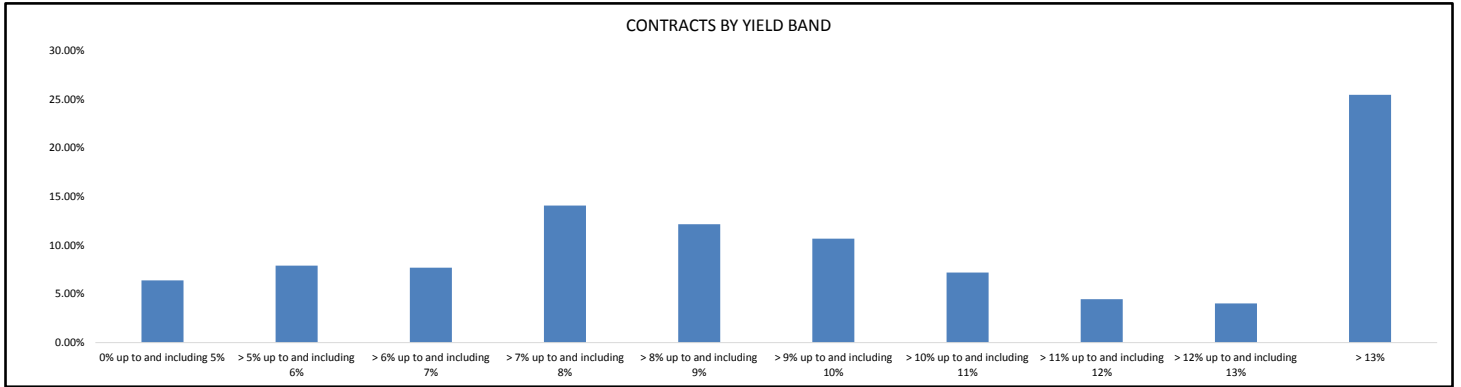
Contracts by New / Used

New / Used	Number of Contracts	(%) Number of Contracts	Receivables Outstanding	(%) Receivables Outstanding
New	5,864	92.52%	\$ 147,179,610	90.38%
Used	474	7.48%	\$ 15,670,785	9.62%
Total	6,338	100.00%	\$ 162,850,395	100.00%



Contracts by Yield Band

Yield Band	Number of Contracts	(%) Number of Contracts	Receivables Outstanding	(%) Receivables Outstanding
0% up to and including 5%	476	7.51%	\$ 10,406,729	6.39%
> 5% up to and including 6%	397	6.26%	\$ 12,873,666	7.91%
> 6% up to and including 7%	392	6.18%	\$ 12,523,306	7.69%
> 7% up to and including 8%	635	10.02%	\$ 22,911,789	14.07%
> 8% up to and including 9%	707	11.15%	\$ 19,790,233	12.15%
> 9% up to and including 10%	723	11.41%	\$ 17,392,282	10.68%
> 10% up to and including 11%	502	7.92%	\$ 11,720,735	7.20%
> 11% up to and including 12%	362	5.71%	\$ 7,252,717	4.45%
> 12% up to and including 13%	300	4.73%	\$ 6,551,203	4.02%
> 13%	1,844	29.09%	\$ 41,427,734	25.44%
Total	6,338	100.00%	\$ 162,850,395	100.00%



Contracts by Interest Rate

Interest Rate	Number of Contracts	(%) Number of Contracts	Receivables Outstanding	(%) Receivables Outstanding
0%	0	0.00%	\$ -	0.00%
> 0% up to and including 2%	0	0.00%	\$ -	0.00%
> 2% up to and including 4%	149	2.35%	\$ 3,220,876	1.98%
> 4% up to and including 6%	1,194	18.84%	\$ 34,596,166	21.24%
> 6% up to and including 8%	4,252	67.09%	\$ 104,673,389	64.28%
> 8% up to and including 10%	626	9.88%	\$ 16,472,538	10.12%
> 10% up to and including 12%	88	1.39%	\$ 2,169,855	1.33%
> 12% up to and including 14%	26	0.41%	\$ 1,616,660	0.99%
> 14% up to and including 16%	3	0.05%	\$ 100,911	0.06%
> 16% up to and including 18%	0	0.00%	\$ -	0.00%
> 18% up to and including 20%	0	0.00%	\$ -	0.00%
> 20%	0	0.00%	\$ -	0.00%
Total	6,338	100.00%	\$ 162,850,395	100.00%

