



FP Turbo Series 2016-1 Trust as at 31 January 2018

Portfolio Summary	
Portfolio size	\$ 202,946,537.89
Number of contracts	7,559
Number of obligors	924
Weighted average yield (p.a.)	8.84%
Average contract balance (current)	\$ 26,848.33
Maximum contract balance (current)	\$ 233,861.59
Average contract balance (original)	\$ 44,785.95
Maximum contract balance (original)	\$ 487,571.03
Weighted average total contract term (months)	49.65
Weighted average seasoning (months)	31.20
Weighted average remaining term (months)	18.46
Maximum remaining term (months)	69.01
Weighted average residual (current)	55.93%
Weighted average residual (original)	33.80%
Weighted average balloon percentage	65.46%
Balloon payments contract balance	\$ 200,788,687.19
Balloon payments contract count	7,527
Balloon payments value	\$ 132,857,389.28
Maximum balloon payment	\$ 131,226.36
Maximum contract balance	\$ 219,491.13

Top 10 Obligor

Customer Code	Number of Contracts	(%) Number of Contracts	Receivables Outstanding	(%) Receivables Outstanding
AAN0481	622	8.23%	\$ 15,648,593	7.71%
AAG0025	300	3.97%	\$ 8,393,295	4.14%
ATE0041	359	4.75%	\$ 8,231,979	4.06%
ARO0130	86	1.14%	\$ 7,986,973	3.94%
ARI0248	343	4.54%	\$ 7,158,946	3.53%
AMU0167	129	1.71%	\$ 6,490,431	3.20%
ARA0071	149	1.97%	\$ 4,447,504	2.19%
ASP0122	29	0.38%	\$ 3,973,109	1.96%
ATS0013	150	1.98%	\$ 3,750,645	1.85%
ACN0001	144	1.91%	\$ 3,074,914	1.52%
Total	2,311	30.57%	\$ 69,156,389	34.08%

Top 10 Contract Balance

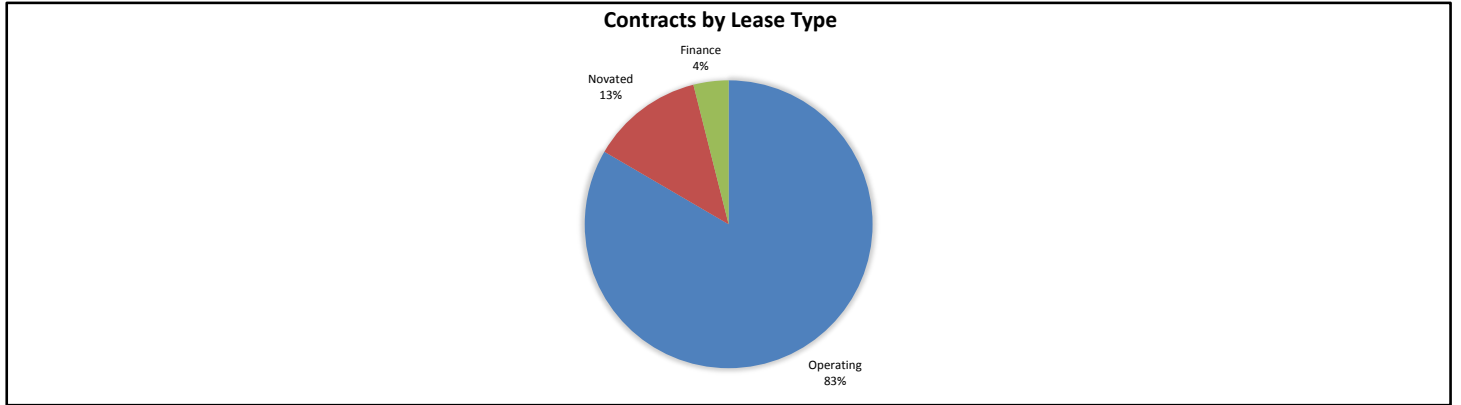
	Receivables Outstanding
1st Decile Upper Limit	\$ 233,862
2nd Decile Upper Limit	\$ 225,620
3rd Decile Upper Limit	\$ 224,683
4th Decile Upper Limit	\$ 223,255
5th Decile Upper Limit	\$ 222,795
6th Decile Upper Limit	\$ 220,640
7th Decile Upper Limit	\$ 219,491
8th Decile Upper Limit	\$ 219,235
9th Decile Upper Limit	\$ 218,781
10th Decile Upper Limit	\$ 218,540

Top 10 Contract Aggregate Balance

	Receivables Outstanding
Aggregate Balance- 1st Decile	\$ 233,862
Aggregate Balance- 2nd Decile	\$ 225,620
Aggregate Balance- 3rd Decile	\$ 224,683
Aggregate Balance- 4th Decile	\$ 223,255
Aggregate Balance- 5th Decile	\$ 222,795
Aggregate Balance- 6th Decile	\$ 220,640
Aggregate Balance- 7th Decile	\$ 219,491
Aggregate Balance- 8th Decile	\$ 219,235
Aggregate Balance- 9th Decile	\$ 437,562
Aggregate Balance- 10th Decile	\$ 655,621
Total	\$ 2,882,764

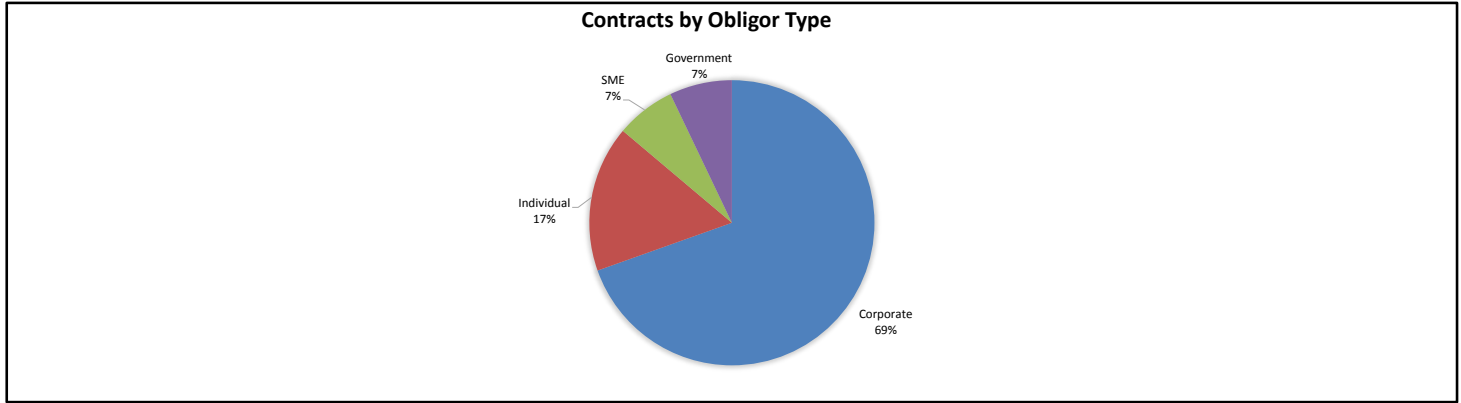
Contracts by Lease Type

Lease Type	Number of Contracts	(%) Number of Contracts	Receivables Outstanding	(%) Receivables Outstanding
Operating	6,355	84.07%	\$ 169,275,006	83.41%
Novated	883	11.68%	\$ 25,674,150	12.65%
Finance	321	4.25%	\$ 7,997,382	3.94%
Total	7,559	100.00%	\$ 202,946,538	100.00%



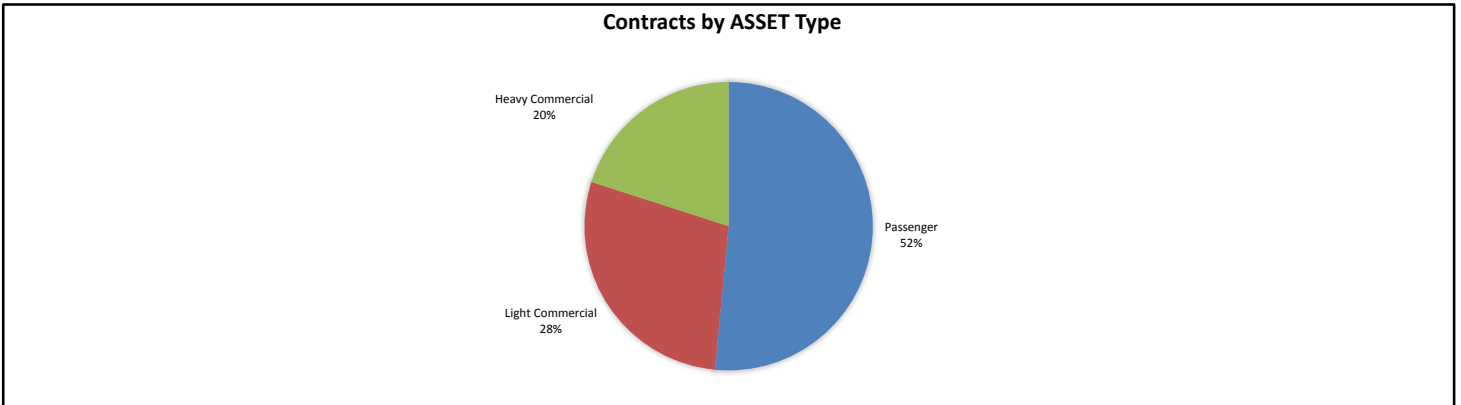
Contracts by Obligor Type

Obligor Type	Number of Contracts	(%) Number of Contracts	Receivables Outstanding	(%) Receivables Outstanding
Corporate	5,357	70.87%	\$ 141,171,103	69.56%
Individual	1,204	15.93%	\$ 33,671,532	16.59%
SME	670	8.86%	\$ 13,697,941	6.75%
Government	328	4.34%	\$ 14,405,962	7.10%
Total	7,559	100.00%	\$ 202,946,538	100.00%



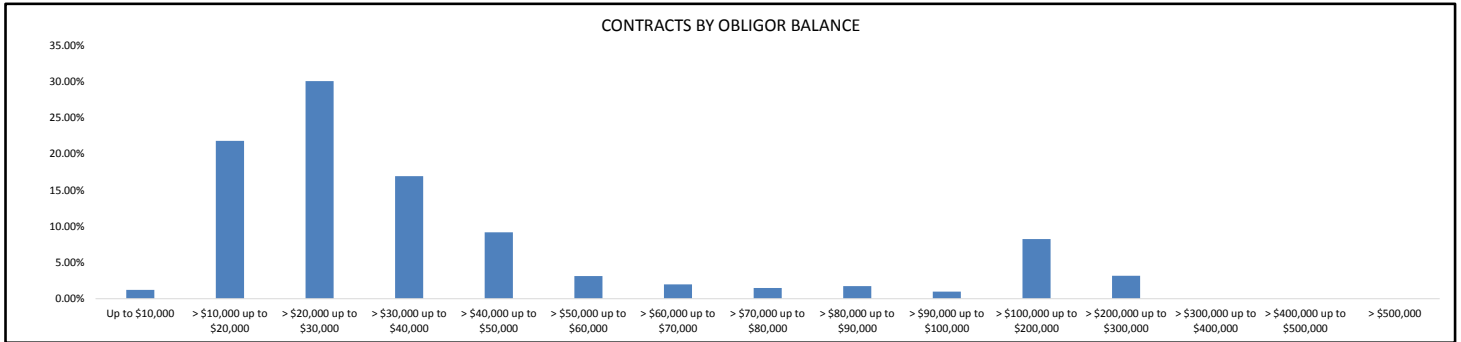
Contracts by Asset Type

Asset Type	Number of Contracts	(%) Number of Contracts	Receivables Outstanding	(%) Receivables Outstanding
Passenger	4,809	63.62%	\$ 104,565,753	51.52%
Light Commercial	2,203	29.14%	\$ 57,714,899	28.44%
Heavy Commercial	547	7.24%	\$ 40,665,886	20.04%
Total	7,559	100.00%	\$ 202,946,538	100.00%



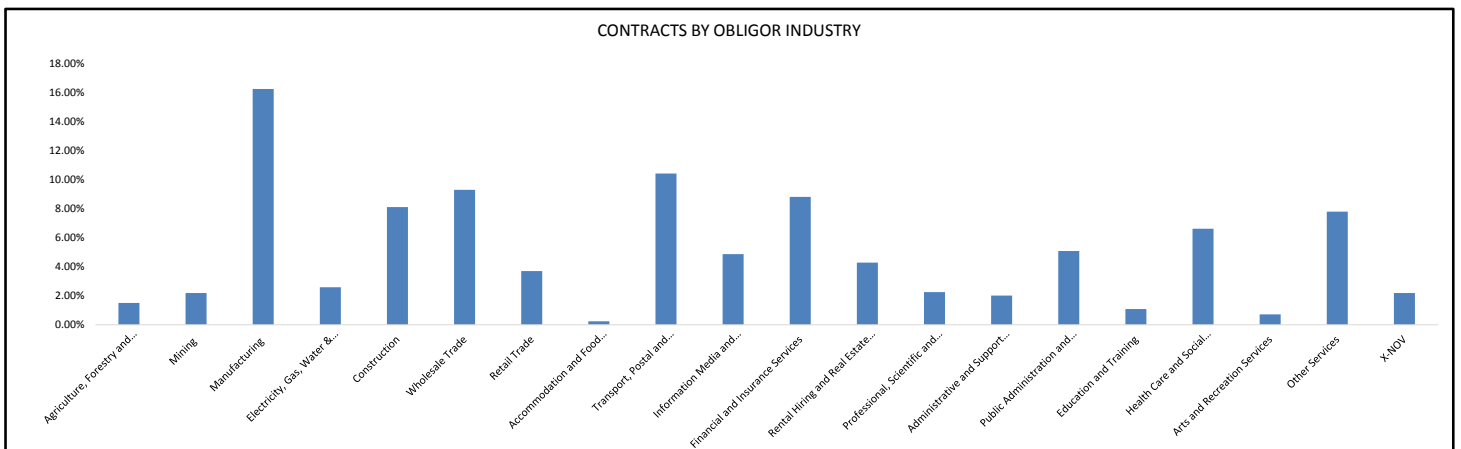
Contracts by Obligor Balance

Obligor Balance	Number of Contracts	(%) Number of Contracts	Receivables Outstanding	(%) Receivables Outstanding
Up to \$10,000	355	4.70%	\$ 2,502,166	1.23%
> \$10,000 up to \$20,000	2,866	37.92%	\$ 44,276,682	21.82%
> \$20,000 up to \$30,000	2,476	32.76%	\$ 61,056,063	30.08%
> \$30,000 up to \$40,000	1,007	13.32%	\$ 34,390,500	16.95%
> \$40,000 up to \$50,000	424	5.61%	\$ 18,646,679	9.19%
> \$50,000 up to \$60,000	117	1.55%	\$ 6,337,377	3.12%
> \$60,000 up to \$70,000	62	0.82%	\$ 4,023,718	1.98%
> \$70,000 up to \$80,000	40	0.53%	\$ 3,004,895	1.48%
> \$80,000 up to \$90,000	42	0.56%	\$ 3,553,879	1.75%
> \$90,000 up to \$100,000	21	0.28%	\$ 1,989,775	0.98%
> \$100,000 up to \$200,000	119	1.57%	\$ 16,713,314	8.24%
> \$200,000 up to \$300,000	30	0.40%	\$ 6,451,489	3.18%
> \$300,000 up to \$400,000	0	0.00%	\$ -	0.00%
> \$400,000 up to \$500,000	0	0.00%	\$ -	0.00%
> \$500,000	0	0.00%	\$ -	0.00%
Total	7,559	100.00%	\$ 202,946,538	100.00%



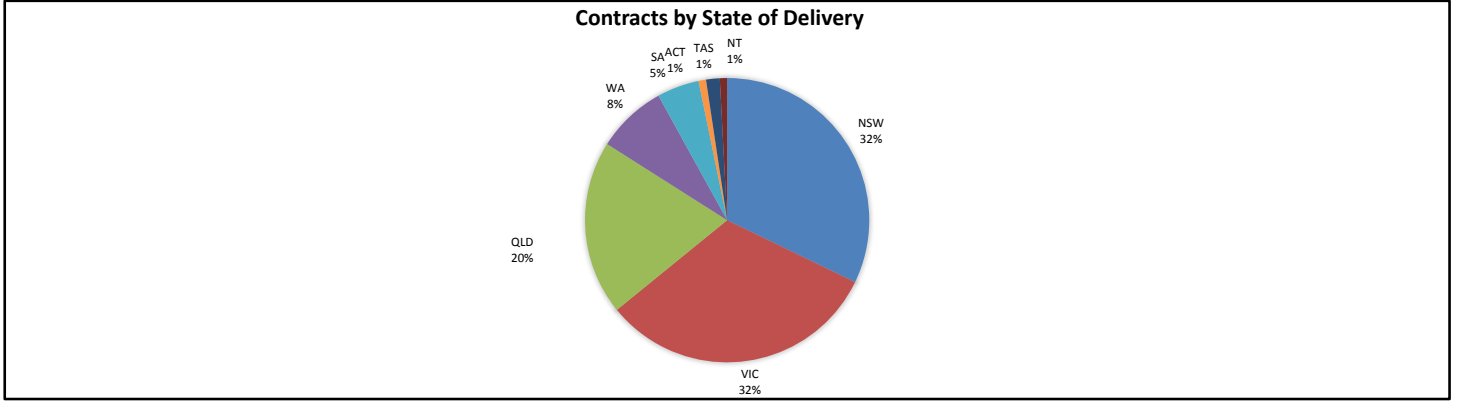
Contracts by Obligor Industry

Obligor Industry	Number of Contracts	(%) Number of Contracts	Receivables Outstanding	(%) Receivables Outstanding
ANZSIC Industry Division: Agriculture, Forestry and Fishing	110	1.46%	\$ 3,050,346	1.50%
ANZSIC Industry Division: Mining	158	2.09%	\$ 4,429,489	2.18%
ANZSIC Industry Division: Manufacturing	1,231	16.29%	\$ 32,979,527	16.25%
ANZSIC Industry Division: Electricity, Gas, Water and Waste Services	212	2.80%	\$ 5,237,718	2.58%
ANZSIC Industry Division: Construction	573	7.58%	\$ 16,454,236	8.11%
ANZSIC Industry Division: Wholesale Trade	766	10.13%	\$ 18,872,410	9.30%
ANZSIC Industry Division: Retail Trade	247	3.27%	\$ 7,495,687	3.69%
ANZSIC Industry Division: Accommodation and Food Services	22	0.29%	\$ 498,282	0.25%
ANZSIC Industry Division: Transport, Postal and Warehousing	442	5.85%	\$ 21,155,879	10.42%
ANZSIC Industry Division: Information Media and Telecommunications	429	5.68%	\$ 9,871,020	4.86%
ANZSIC Industry Division: Financial and Insurance Services	711	9.41%	\$ 17,887,638	8.81%
ANZSIC Industry Division: Rental, Hiring and Real Estate Services	431	5.70%	\$ 8,681,930	4.28%
ANZSIC Industry Division: Professional, Scientific and Technical Services	177	2.34%	\$ 4,573,768	2.25%
ANZSIC Industry Division: Administrative and Support Services	179	2.37%	\$ 4,077,780	2.01%
ANZSIC Industry Division: Public Administration and Safety	194	2.57%	\$ 10,319,301	5.08%
ANZSIC Industry Division: Education and Training	91	1.20%	\$ 2,207,742	1.09%
ANZSIC Industry Division: Health Care and Social Assistance	729	9.64%	\$ 13,437,017	6.62%
ANZSIC Industry Division: Arts and Recreational Services	72	0.95%	\$ 1,451,056	0.71%
Other Services	615	8.14%	\$ 15,826,020	7.80%
X-NOV	170	2.25%	\$ 4,439,692	2.19%
Total	7,559	100.00%	\$ 202,946,538	100.00%



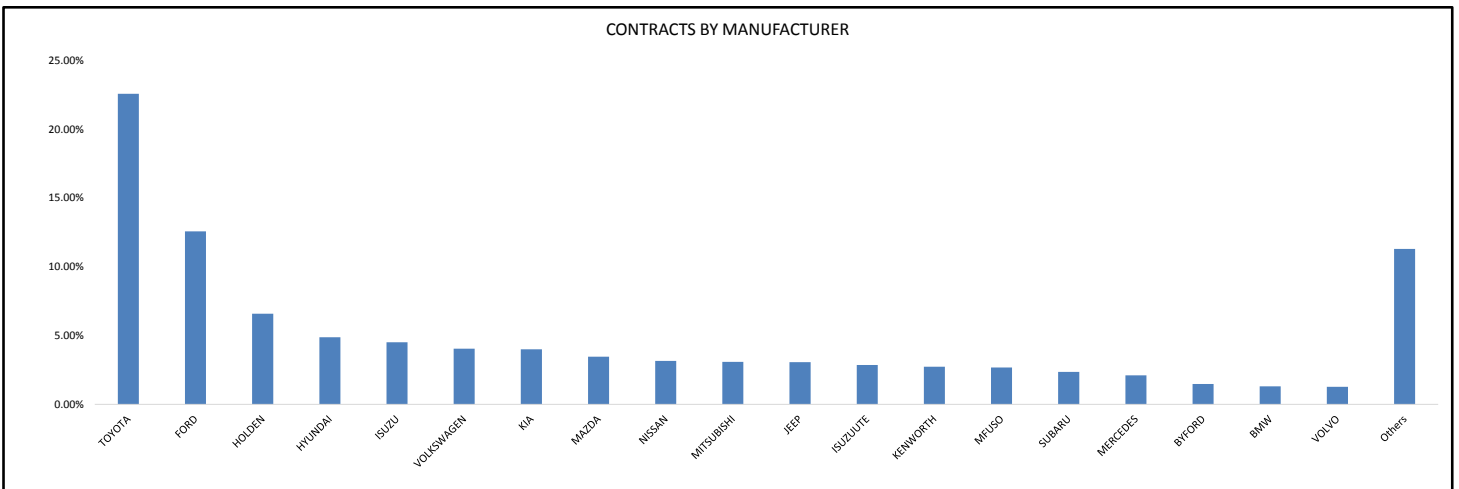
Contracts by State of Delivery

State of Delivery	Number of Contracts	(%) Number of Contracts	Receivables Outstanding	(%) Receivables Outstanding
NSW	2,284	30.22%	\$ 65,315,777	32.18%
VIC	2,401	31.76%	\$ 64,832,034	31.95%
QLD	1,526	20.19%	\$ 40,316,234	19.87%
WA	685	9.06%	\$ 16,198,132	7.98%
SA	411	5.44%	\$ 9,725,313	4.79%
ACT	68	0.90%	\$ 1,736,556	0.86%
TAS	128	1.69%	\$ 3,148,264	1.55%
NT	56	0.74%	\$ 1,674,228	0.82%
Total	7,559	100.00%	\$ 202,946,538	100.00%



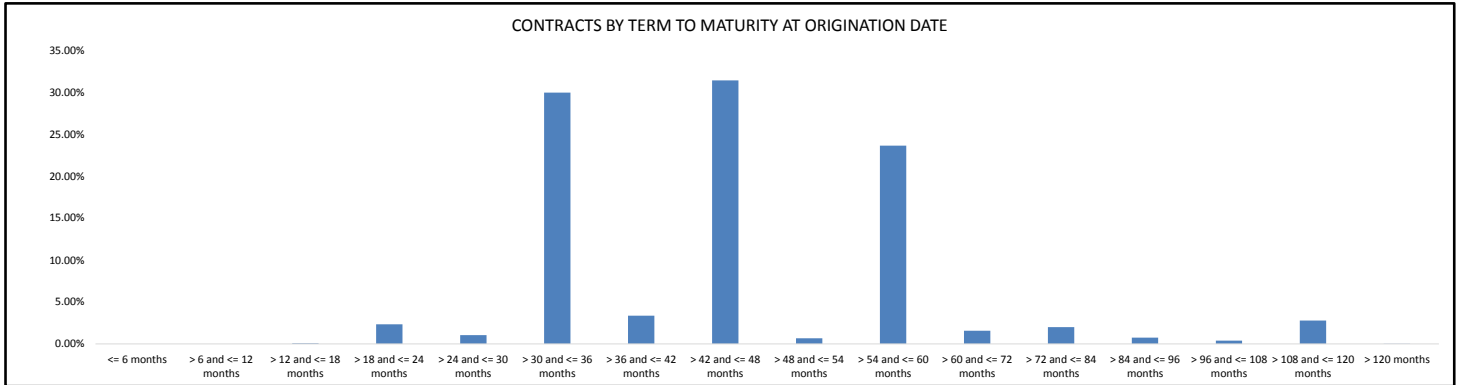
Contracts by Manufacturer

Manufacturer	Number of Contracts	(%) Number of Contracts	Receivables Outstanding	(%) Receivables Outstanding
TOYOTA	1,842	24.37%	\$ 45,786,488	22.56%
FORD	1,116	14.76%	\$ 25,494,179	12.56%
HOLDEN	651	8.61%	\$ 13,375,859	6.59%
HYUNDAI	565	7.47%	\$ 9,894,679	4.88%
ISUZU	142	1.88%	\$ 9,146,634	4.51%
VOLKSWAGEN	364	4.82%	\$ 8,218,774	4.05%
KIA	409	5.41%	\$ 8,117,116	4.00%
MAZDA	330	4.37%	\$ 7,025,359	3.46%
NISSAN	307	4.06%	\$ 6,393,384	3.15%
MITSUBISHI	304	4.02%	\$ 6,265,296	3.09%
JEEP	246	3.25%	\$ 6,219,891	3.06%
ISUZUUTE	205	2.71%	\$ 5,808,476	2.86%
KENWORTH	29	0.38%	\$ 5,542,385	2.73%
MFUSO	92	1.22%	\$ 5,423,237	2.67%
SUBARU	206	2.73%	\$ 4,777,047	2.35%
MERCEDES	89	1.18%	\$ 4,271,387	2.10%
BYFORD	21	0.28%	\$ 3,011,577	1.48%
BMW	59	0.78%	\$ 2,657,296	1.31%
VOLVO	32	0.42%	\$ 2,595,823	1.28%
Others	550	7.28%	\$ 22,921,648	11.29%
Total	7,559	100.00%	\$ 202,946,538	100.00%



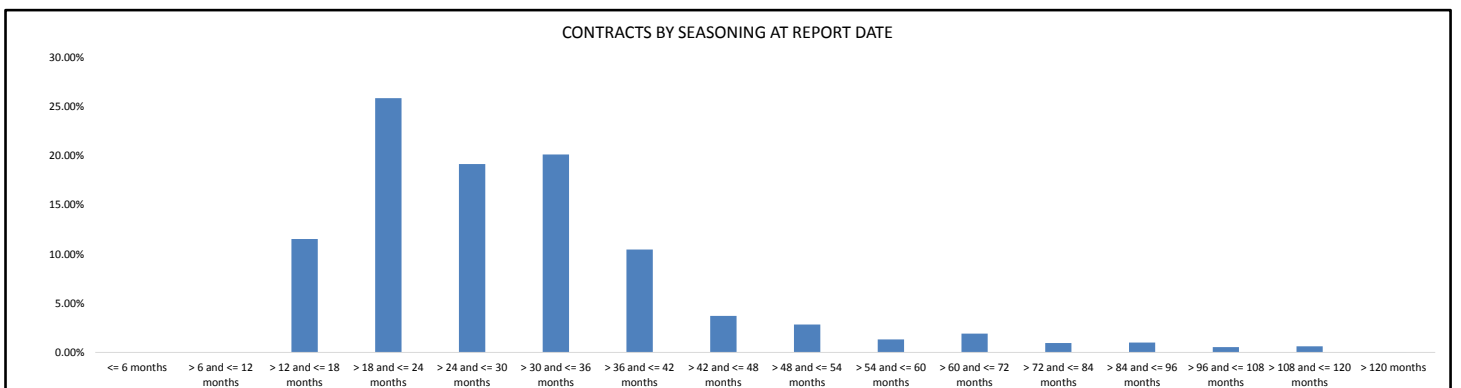
Contracts by Term to Maturity at Origination Date

Term to Maturity at Origination Date	Number of Contracts	(%) Number of Contracts	Receivables Outstanding	(%) Receivables Outstanding
<= 6 months	0	0.00%	\$ -	0.00%
> 6 and <= 12 months	0	0.00%	\$ -	0.00%
> 12 and <= 18 months	8	0.11%	\$ 148,960	0.07%
> 18 and <= 24 months	227	3.00%	\$ 4,747,101	2.34%
> 24 and <= 30 months	98	1.30%	\$ 2,110,641	1.04%
> 30 and <= 36 months	2,704	35.77%	\$ 60,816,979	29.97%
> 36 and <= 42 months	401	5.30%	\$ 6,820,817	3.36%
> 42 and <= 48 months	2,475	32.74%	\$ 63,751,834	31.41%
> 48 and <= 54 months	86	1.14%	\$ 1,360,131	0.67%
> 54 and <= 60 months	1,207	15.97%	\$ 47,967,327	23.64%
> 60 and <= 72 months	152	2.01%	\$ 3,184,497	1.57%
> 72 and <= 84 months	84	1.11%	\$ 4,073,182	2.01%
> 84 and <= 96 months	36	0.48%	\$ 1,532,817	0.76%
> 96 and <= 108 months	15	0.20%	\$ 787,626	0.39%
> 108 and <= 120 months	65	0.86%	\$ 5,642,734	2.78%
> 120 months	1	0.01%	\$ 1,894	0.00%
Total	7,559	100.00%	\$ 202,946,538	100.00%



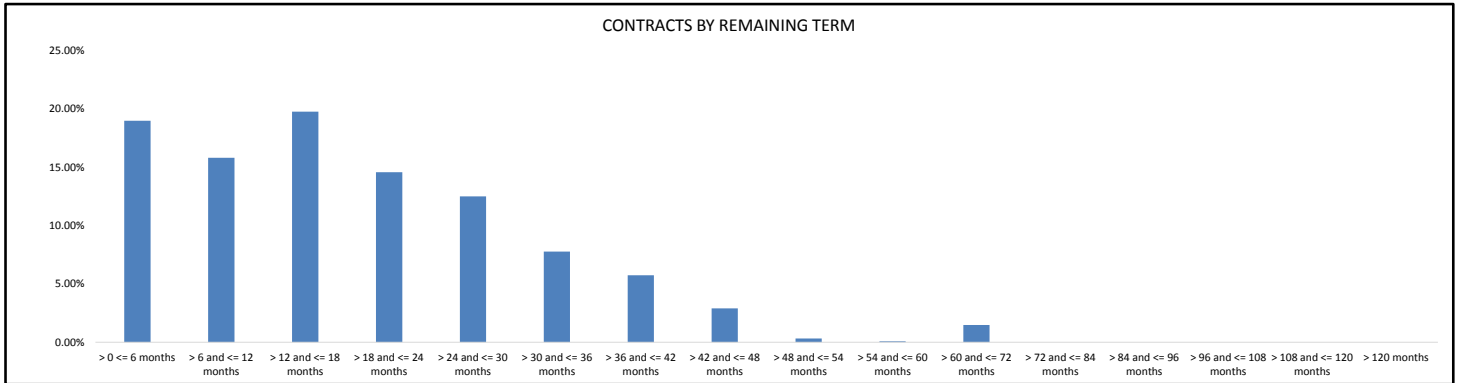
Contracts by Seasoning at Report Date

Seasoning at Report Date	Number of Contracts	(%) Number of Contracts	Receivables Outstanding	(%) Receivables Outstanding
<= 6 months	0	0.00%	\$ -	0.00%
> 6 and <= 12 months	0	0.00%	\$ -	0.00%
> 12 and <= 18 months	710	9.39%	\$ 23,412,259	11.54%
> 18 and <= 24 months	1,738	22.99%	\$ 52,449,968	25.84%
> 24 and <= 30 months	1,482	19.61%	\$ 38,858,339	19.15%
> 30 and <= 36 months	1,677	22.19%	\$ 40,831,320	20.12%
> 36 and <= 42 months	997	13.19%	\$ 21,219,111	10.46%
> 42 and <= 48 months	382	5.05%	\$ 7,526,985	3.71%
> 48 and <= 54 months	142	1.88%	\$ 5,771,509	2.84%
> 54 and <= 60 months	119	1.57%	\$ 2,686,389	1.32%
> 60 and <= 72 months	166	2.20%	\$ 3,875,760	1.91%
> 72 and <= 84 months	58	0.77%	\$ 1,922,209	0.95%
> 84 and <= 96 months	42	0.56%	\$ 2,025,429	1.00%
> 96 and <= 108 months	18	0.24%	\$ 1,105,890	0.54%
> 108 and <= 120 months	27	0.36%	\$ 1,259,476	0.62%
> 120 months	1	0.01%	\$ 1,894	0.00%
Total	7,559	100.00%	\$ 202,946,538	100.00%



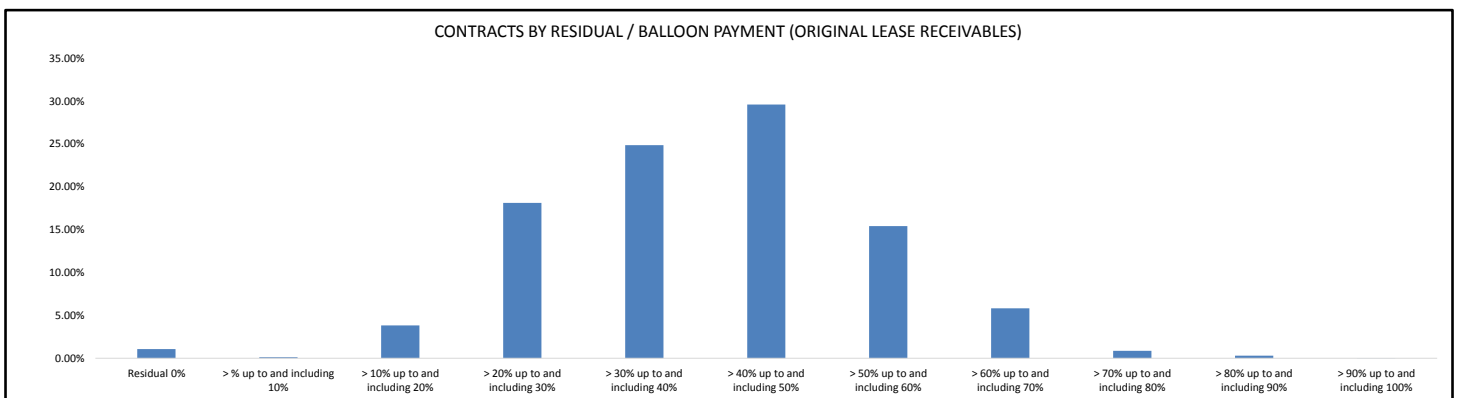
Contracts by Remaining Term

Remaining Term	Number of Contracts	(%) Number of Contracts	Receivables Outstanding	(%) Receivables Outstanding
> 0 <= 6 months	2,112	27.94%	\$ 38,542,977	18.99%
> 6 and <= 12 months	1,445	19.12%	\$ 32,101,292	15.82%
> 12 and <= 18 months	1,533	20.28%	\$ 40,129,433	19.77%
> 18 and <= 24 months	1,005	13.30%	\$ 29,587,354	14.58%
> 24 and <= 30 months	675	8.93%	\$ 25,399,844	12.52%
> 30 and <= 36 months	408	5.40%	\$ 15,790,231	7.78%
> 36 and <= 42 months	257	3.40%	\$ 11,648,196	5.74%
> 42 and <= 48 months	99	1.31%	\$ 5,908,345	2.91%
> 48 and <= 54 months	3	0.04%	\$ 666,690	0.33%
> 54 and <= 60 months	1	0.01%	\$ 160,598	0.08%
> 60 and <= 72 months	21	0.28%	\$ 3,011,577	1.48%
> 72 and <= 84 months	0	0.00%	\$ -	0.00%
> 84 and <= 96 months	0	0.00%	\$ -	0.00%
> 96 and <= 108 months	0	0.00%	\$ -	0.00%
> 108 and <= 120 months	0	0.00%	\$ -	0.00%
> 120 months	0	0.00%	\$ -	0.00%
Total	7,559	100.00%	\$ 202,946,538	100.00%



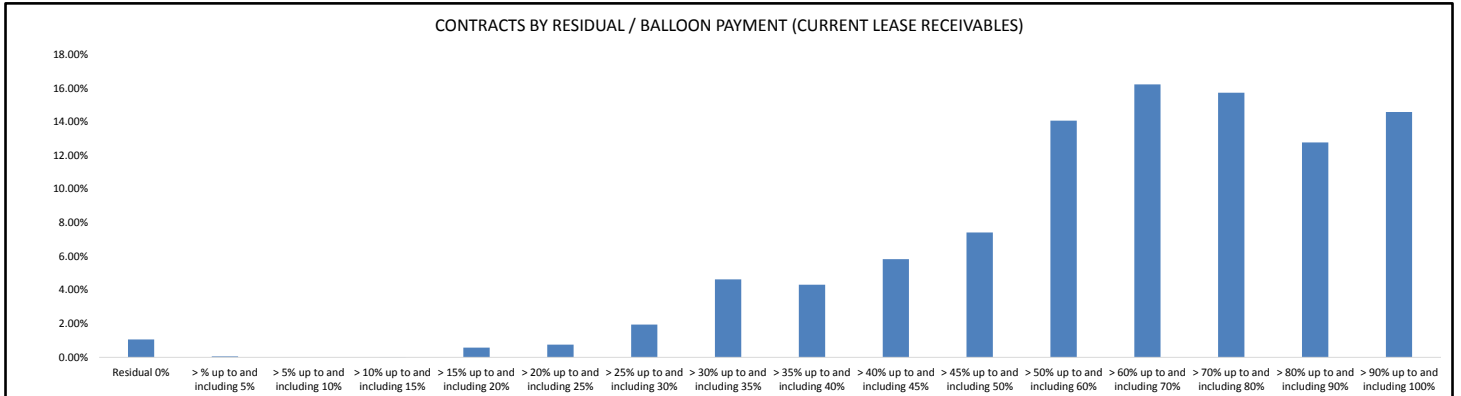
Contracts by Residual/Balloon Payment (Original Lease Receivables)

Residual/Balloon Payment (Original Lease Receivables)	Number of Contracts	(%) Number of Contracts	Receivables Outstanding	(%) Receivables Outstanding
Residual 0%	17	0.22%	\$ 2,157,851	1.06%
> % up to and including 10%	18	0.24%	\$ 232,331	0.11%
> 10% up to and including 20%	243	3.21%	\$ 7,785,693	3.84%
> 20% up to and including 30%	1,039	13.75%	\$ 36,773,258	18.12%
> 30% up to and including 40%	1,774	23.47%	\$ 50,448,774	24.86%
> 40% up to and including 50%	2,555	33.80%	\$ 60,047,383	29.59%
> 50% up to and including 60%	1,371	18.14%	\$ 31,285,468	15.42%
> 60% up to and including 70%	453	5.99%	\$ 11,805,010	5.82%
> 70% up to and including 80%	66	0.87%	\$ 1,771,428	0.87%
> 80% up to and including 90%	22	0.29%	\$ 621,063	0.31%
> 90% up to and including 100%	1	0.01%	\$ 18,280	0.01%
Total	7,559	100.00%	\$ 202,946,538	100.00%



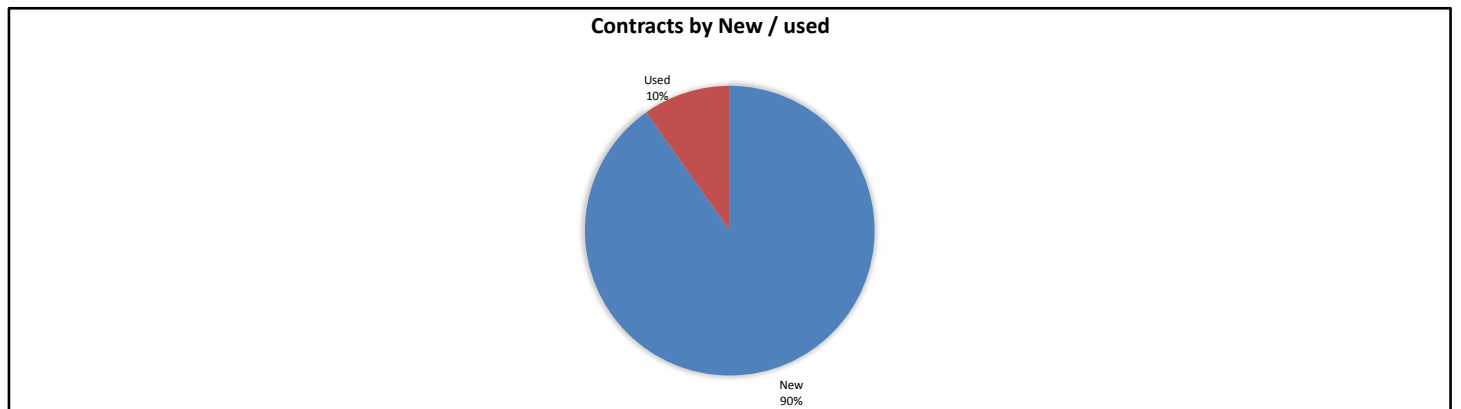
Contracts by Residual/Balloon Payment (Current Lease Receivables)

Residual/Balloon Payment (Current Lease Receivables)	Number of Contracts	(%) Number of Contracts	Receivables Outstanding	(%) Receivables Outstanding
Residual 0%	32	0.42%	\$ 2,157,851	1.06%
> % up to and including 5%	7	0.09%	\$ 118,540	0.06%
> 5% up to and including 10%	0	0.00%	\$ -	0.00%
> 10% up to and including 15%	2	0.03%	\$ 31,532	0.02%
> 15% up to and including 20%	12	0.16%	\$ 1,182,705	0.58%
> 20% up to and including 25%	27	0.36%	\$ 1,531,741	0.75%
> 25% up to and including 30%	81	1.07%	\$ 3,949,581	1.95%
> 30% up to and including 35%	190	2.51%	\$ 9,404,816	4.63%
> 35% up to and including 40%	242	3.20%	\$ 8,754,761	4.31%
> 40% up to and including 45%	304	4.02%	\$ 11,838,379	5.83%
> 45% up to and including 50%	380	5.03%	\$ 15,067,010	7.42%
> 50% up to and including 60%	915	12.10%	\$ 28,558,519	14.07%
> 60% up to and including 70%	1,239	16.39%	\$ 32,925,355	16.22%
> 70% up to and including 80%	1,351	17.87%	\$ 31,914,546	15.73%
> 80% up to and including 90%	1,204	15.93%	\$ 25,913,450	12.77%
> 90% up to and including 100%	1,573	20.81%	\$ 29,597,755	14.58%
Total	7,559	100.00%	\$ 202,946,538	100.00%



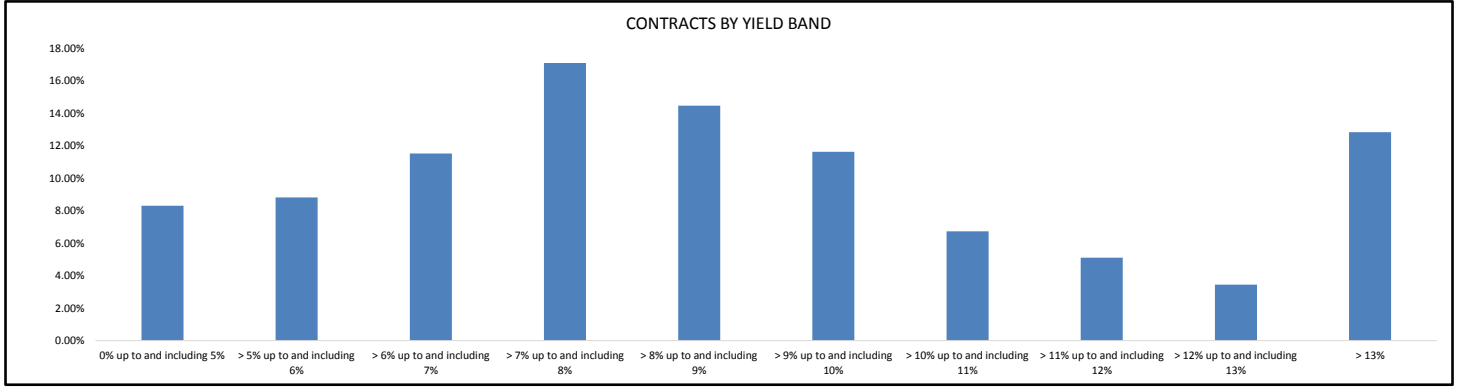
Contracts by New / Used

New / Used	Number of Contracts	(%) Number of Contracts	Receivables Outstanding	(%) Receivables Outstanding
New	6,950	91.94%	\$ 183,097,252	90.22%
Used	609	8.06%	\$ 19,849,286	9.78%
Total	7,559	100.00%	\$ 202,946,538	100.00%



Contracts by Yield Band

Yield Band	Number of Contracts	(%) Number of Contracts	Receivables Outstanding	(%) Receivables Outstanding
0% up to and including 5%	708	9.37%	\$ 16,870,529	8.31%
> 5% up to and including 6%	562	7.43%	\$ 17,900,626	8.82%
> 6% up to and including 7%	819	10.83%	\$ 23,388,078	11.52%
> 7% up to and including 8%	1,063	14.06%	\$ 34,715,598	17.11%
> 8% up to and including 9%	1,047	13.85%	\$ 29,367,102	14.47%
> 9% up to and including 10%	866	11.46%	\$ 23,612,256	11.63%
> 10% up to and including 11%	532	7.04%	\$ 13,670,523	6.74%
> 11% up to and including 12%	444	5.87%	\$ 10,365,912	5.11%
> 12% up to and including 13%	324	4.29%	\$ 6,992,352	3.45%
> 13%	1,194	15.80%	\$ 26,063,562	12.84%
Total	7,559	100.00%	\$ 202,946,538	100.00%



Contracts by Interest Rate

Interest Rate	Number of Contracts	(%) Number of Contracts	Receivables Outstanding	(%) Receivables Outstanding
0%	0	0.00%	\$ -	0.00%
> 0% up to and including 2%	0	0.00%	\$ -	0.00%
> 2% up to and including 4%	168	2.22%	\$ 3,919,526	1.93%
> 4% up to and including 6%	1,435	18.98%	\$ 43,081,872	21.23%
> 6% up to and including 8%	5,073	67.11%	\$ 130,462,458	64.28%
> 8% up to and including 10%	710	9.39%	\$ 20,309,941	10.01%
> 10% up to and including 12%	139	1.84%	\$ 3,133,093	1.54%
> 12% up to and including 14%	31	0.41%	\$ 1,930,003	0.95%
> 14% up to and including 16%	3	0.04%	\$ 109,646	0.05%
> 14% up to and including 18%	0	0.00%	\$ -	0.00%
> 16% up to and including 20%	0	0.00%	\$ -	0.00%
> 20%	0	0.00%	\$ -	0.00%
Total	7,559	100.00%	\$ 202,946,538	100.00%

