



FP Turbo Series 2016-1 Trust as at 31 March 2018

Portfolio Summary	
Portfolio size	\$ 185,627,404.79
Number of contracts	7,027
Number of obligors	879
Weighted average yield (p.a.)	9.38%
Average contract balance (current)	\$ 26,416.31
Maximum contract balance (current)	\$ 224,882.46
Average contract balance (original)	\$ 45,062.31
Maximum contract balance (original)	\$ 487,571.03
Weighted average total contract term (months)	50.15
Weighted average seasoning (months)	32.66
Weighted average remaining term (months)	17.49
Maximum remaining term (months)	67.07
Weighted average residual (current)	57.39%
Weighted average residual (original)	33.83%
Weighted average balloon percentage	66.95%
Balloon payments contract balance	\$ 183,525,362.34
Balloon payments contract count	6,991
Balloon payments value	\$ 124,275,708.52
Maximum balloon payment	\$ 131,226.36
Maximum contract balance	\$ 212,537.01

Top 10 Obligor

Customer Code	Number of Contracts	(%) Number of Contracts	Receivables Outstanding	(%) Receivables Outstanding
AAN0481	580	8.25%	\$ 14,213,043	7.66%
AAG0025	288	4.10%	\$ 7,839,928	4.22%
ARO0130	86	1.22%	\$ 7,630,530	4.11%
ATE0041	331	4.71%	\$ 7,354,857	3.96%
ARI0248	340	4.84%	\$ 6,816,447	3.67%
AMU0167	125	1.78%	\$ 6,236,006	3.36%
ARA0071	119	1.69%	\$ 3,862,236	2.08%
ASP0122	29	0.41%	\$ 3,816,202	2.06%
ATS0013	150	2.13%	\$ 3,633,710	1.96%
ACN0001	129	1.84%	\$ 2,681,953	1.44%
Total	2,177	30.98%	\$ 64,084,912	34.52%

Top 10 Contract Balance

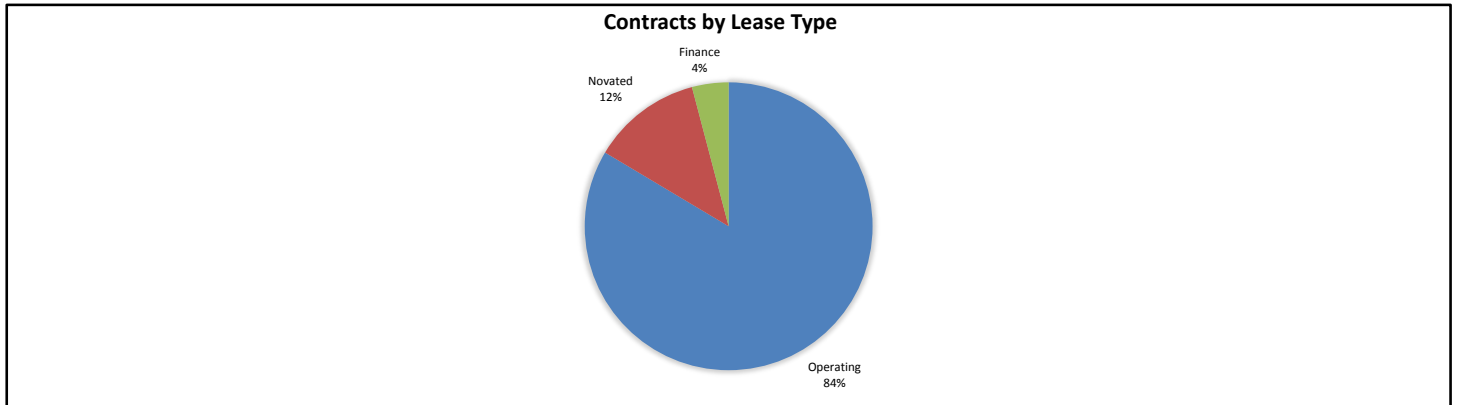
	Receivables Outstanding
1st Decile Upper Limit	\$ 224,882
2nd Decile Upper Limit	\$ 218,335
3rd Decile Upper Limit	\$ 218,129
4th Decile Upper Limit	\$ 217,571
5th Decile Upper Limit	\$ 217,127
6th Decile Upper Limit	\$ 215,048
7th Decile Upper Limit	\$ 212,537
8th Decile Upper Limit	\$ 212,299
9th Decile Upper Limit	\$ 212,207
10th Decile Upper Limit	\$ 211,934

Top 10 Contract Aggregate Balance

	Receivables Outstanding
Aggregate Balance- 1st Decile	\$ 224,882
Aggregate Balance- 2nd Decile	\$ 218,335
Aggregate Balance- 3rd Decile	\$ 218,129
Aggregate Balance- 4th Decile	\$ 217,571
Aggregate Balance- 5th Decile	\$ 217,127
Aggregate Balance- 6th Decile	\$ 215,048
Aggregate Balance- 7th Decile	\$ 212,537
Aggregate Balance- 8th Decile	\$ 212,299
Aggregate Balance- 9th Decile	\$ 424,415
Aggregate Balance- 10th Decile	\$ 635,801
Total	\$ 2,796,144

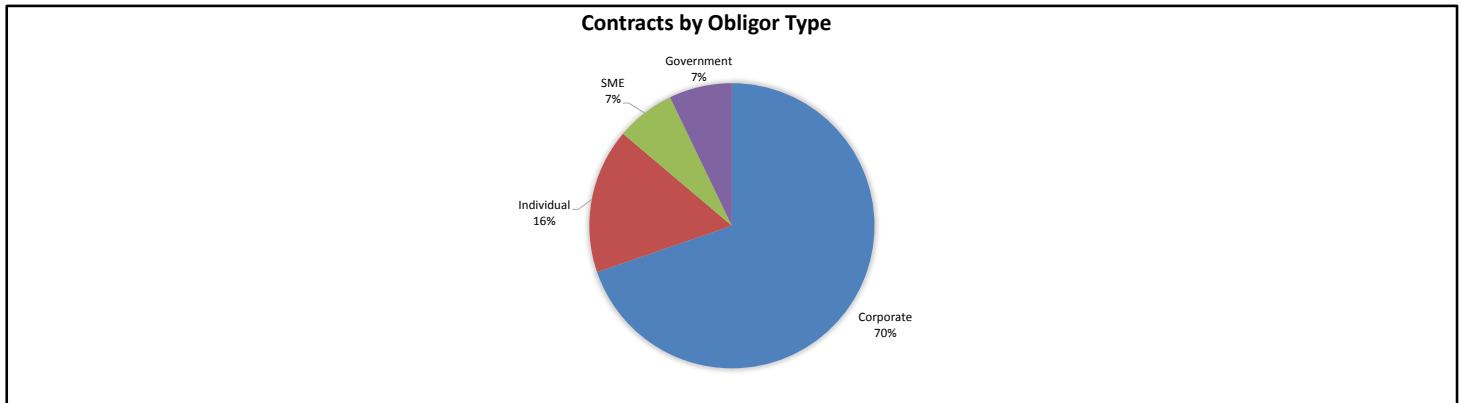
Contracts by Lease Type

Lease Type	Number of Contracts	(%) Number of Contracts	Receivables Outstanding	(%) Receivables Outstanding
Operating	5,907	84.06%	\$ 155,111,319	83.56%
Novated	802	11.41%	\$ 22,891,664	12.33%
Finance	318	4.53%	\$ 7,624,422	4.11%
Total	7,027	100.00%	\$ 185,627,405	100.00%



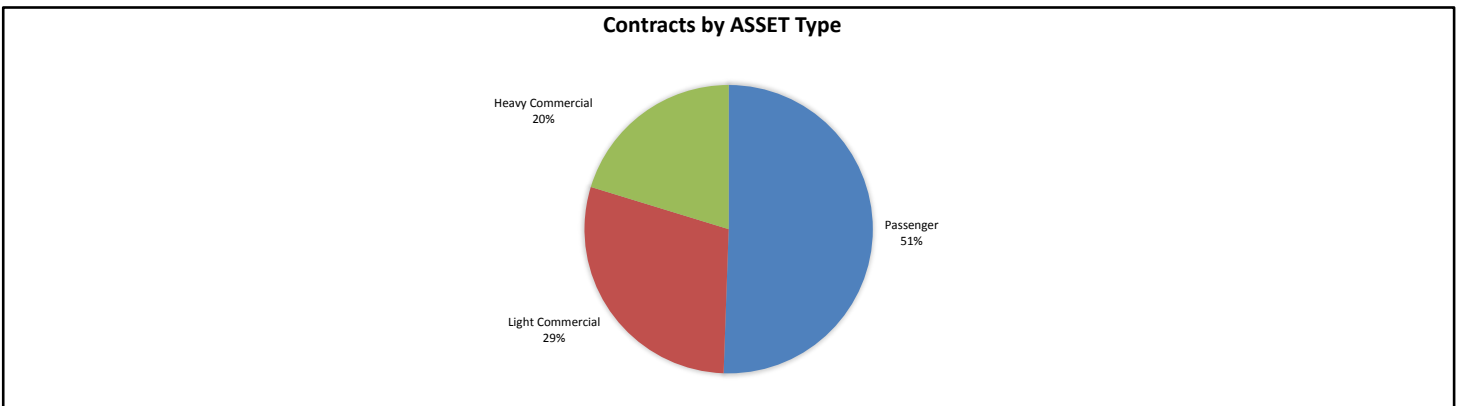
Contracts by Obligor Type

Obligor Type	Number of Contracts	(%) Number of Contracts	Receivables Outstanding	(%) Receivables Outstanding
Corporate	4,994	71.07%	\$ 129,441,969	69.73%
Individual	1,120	15.94%	\$ 30,516,086	16.44%
SME	623	8.87%	\$ 12,405,456	6.68%
Government	290	4.13%	\$ 13,263,894	7.15%
Total	7,027	100.00%	\$ 185,627,405	100.00%



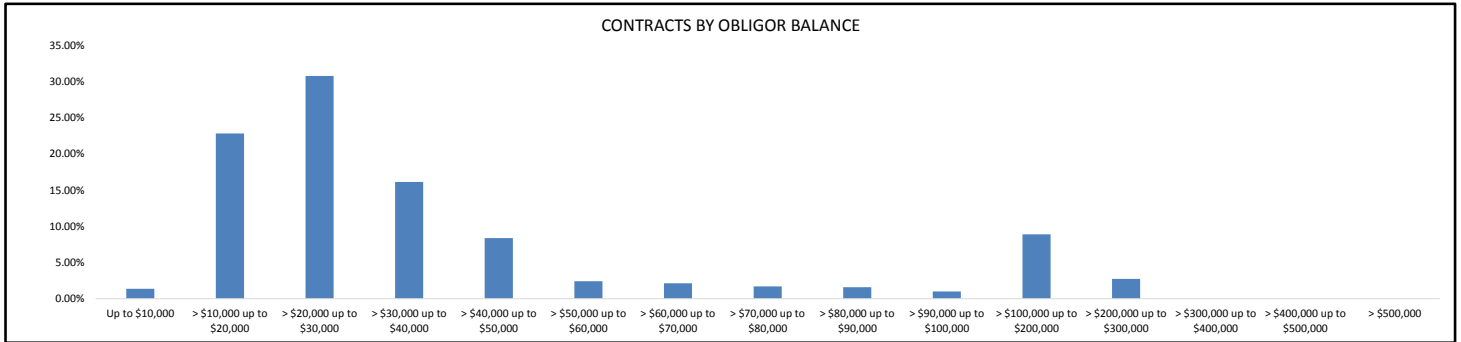
Contracts by Asset Type

Asset Type	Number of Contracts	(%) Number of Contracts	Receivables Outstanding	(%) Receivables Outstanding
Passenger	4,426	62.99%	\$ 93,852,765	50.56%
Light Commercial	2,093	29.79%	\$ 54,149,685	29.17%
Heavy Commercial	508	7.23%	\$ 37,624,955	20.27%
Total	7,027	100.00%	\$ 185,627,405	100.00%



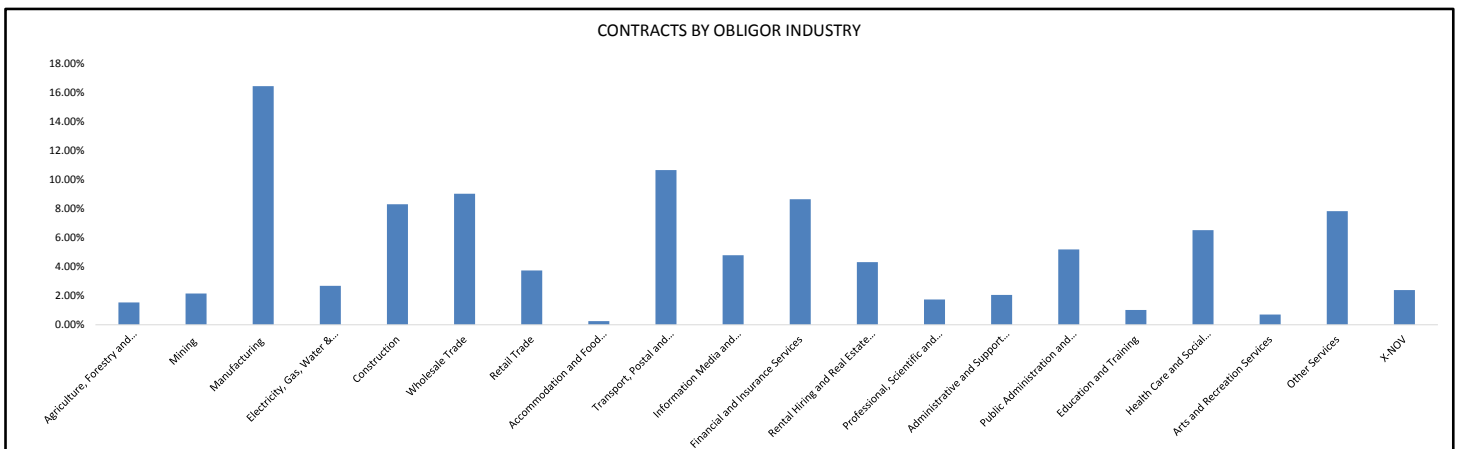
Contracts by Obligor Balance

Obligor Balance	Number of Contracts	(%) Number of Contracts	Receivables Outstanding	(%) Receivables Outstanding
Up to \$10,000	358	5.09%	\$ 2,562,998	1.38%
> \$10,000 up to \$20,000	2,752	39.16%	\$ 42,378,946	22.83%
> \$20,000 up to \$30,000	2,312	32.90%	\$ 57,167,160	30.80%
> \$30,000 up to \$40,000	870	12.38%	\$ 29,941,880	16.13%
> \$40,000 up to \$50,000	353	5.02%	\$ 15,567,156	8.39%
> \$50,000 up to \$60,000	82	1.17%	\$ 4,473,246	2.41%
> \$60,000 up to \$70,000	62	0.88%	\$ 3,975,365	2.14%
> \$70,000 up to \$80,000	42	0.60%	\$ 3,165,455	1.71%
> \$80,000 up to \$90,000	35	0.50%	\$ 2,939,139	1.58%
> \$90,000 up to \$100,000	20	0.28%	\$ 1,878,265	1.01%
> \$100,000 up to \$200,000	117	1.67%	\$ 16,511,336	8.89%
> \$200,000 up to \$300,000	24	0.34%	\$ 5,066,459	2.73%
> \$300,000 up to \$400,000	0	0.00%	\$ -	0.00%
> \$400,000 up to \$500,000	0	0.00%	\$ -	0.00%
> \$500,000	0	0.00%	\$ -	0.00%
Total	7,027	100.00%	\$ 185,627,405	100.00%



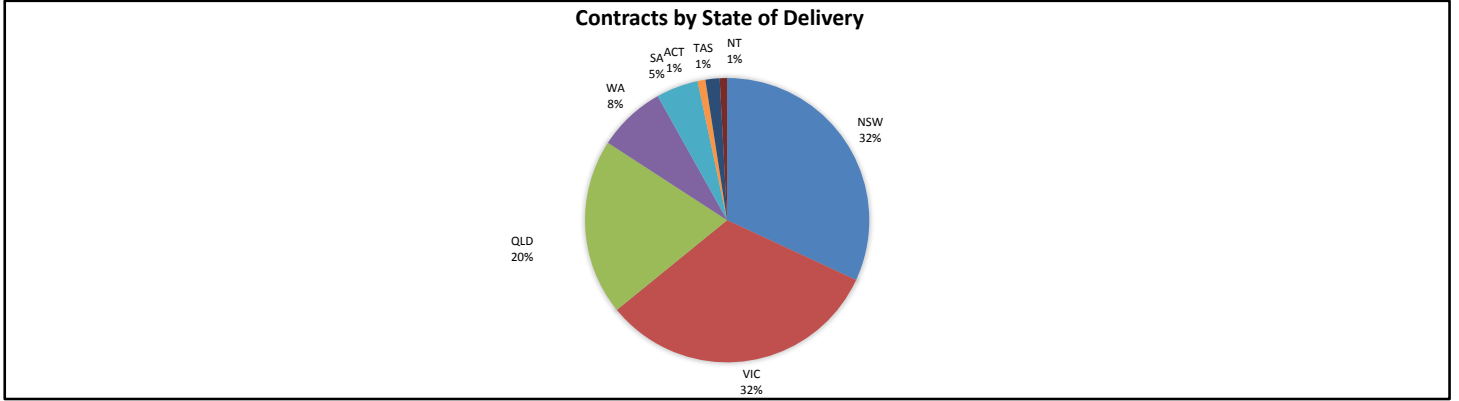
Contracts by Obligor Industry

Obligor Industry	Number of Contracts	(%) Number of Contracts	Receivables Outstanding	(%) Receivables Outstanding
ANZSIC Industry Division: Agriculture, Forestry and Fishing	106	1.51%	\$ 2,853,233	1.54%
ANZSIC Industry Division: Mining	143	2.04%	\$ 3,994,775	2.15%
ANZSIC Industry Division: Manufacturing	1,158	16.48%	\$ 30,522,843	16.44%
ANZSIC Industry Division: Electricity, Gas, Water and Waste Services	206	2.93%	\$ 4,974,510	2.68%
ANZSIC Industry Division: Construction	560	7.97%	\$ 15,408,229	8.30%
ANZSIC Industry Division: Wholesale Trade	696	9.90%	\$ 16,759,314	9.03%
ANZSIC Industry Division: Retail Trade	236	3.36%	\$ 6,950,039	3.74%
ANZSIC Industry Division: Accommodation and Food Services	22	0.31%	\$ 462,057	0.25%
ANZSIC Industry Division: Transport, Postal and Warehousing	404	5.75%	\$ 19,794,267	10.66%
ANZSIC Industry Division: Information Media and Telecommunications	400	5.69%	\$ 8,892,090	4.79%
ANZSIC Industry Division: Financial and Insurance Services	649	9.24%	\$ 16,057,032	8.65%
ANZSIC Industry Division: Rental, Hiring and Real Estate Services	416	5.92%	\$ 8,009,670	4.31%
ANZSIC Industry Division: Professional, Scientific and Technical Services	108	1.54%	\$ 3,243,104	1.75%
ANZSIC Industry Division: Administrative and Support Services	167	2.38%	\$ 3,809,902	2.05%
ANZSIC Industry Division: Public Administration and Safety	180	2.56%	\$ 9,641,497	5.19%
ANZSIC Industry Division: Education and Training	79	1.12%	\$ 1,882,408	1.01%
ANZSIC Industry Division: Health Care and Social Assistance	675	9.61%	\$ 12,098,505	6.52%
ANZSIC Industry Division: Arts and Recreational Services	68	0.97%	\$ 1,313,066	0.71%
Other Services	581	8.27%	\$ 14,531,102	7.83%
X-NOV	173	2.46%	\$ 4,429,759	2.39%
Total	7,027	100.00%	\$ 185,627,405	100.00%



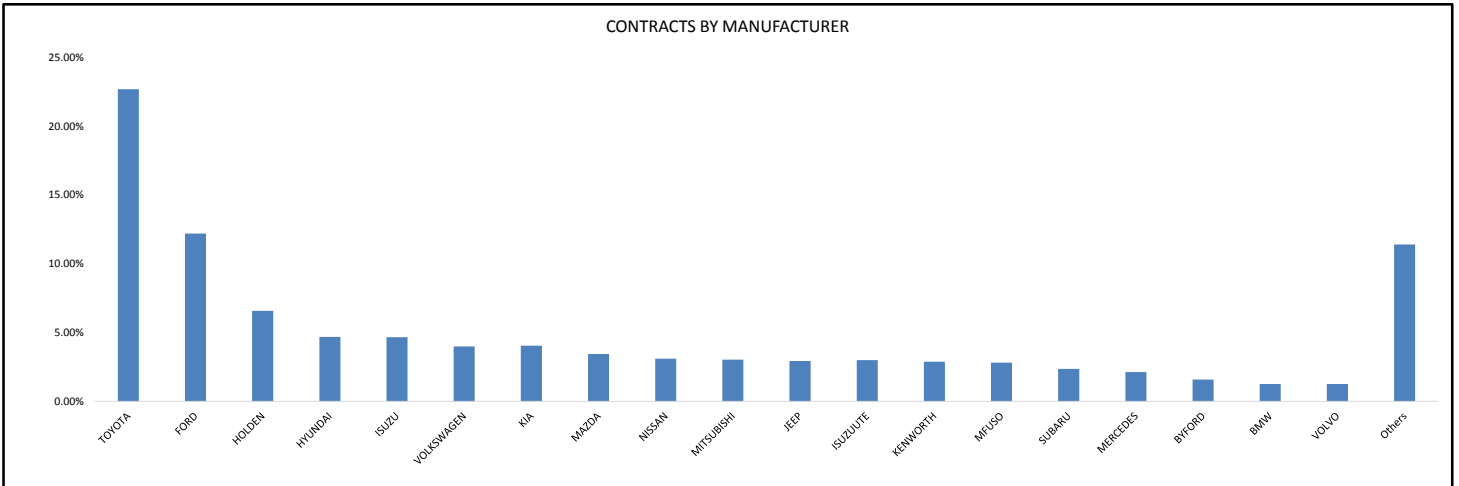
Contracts by State of Delivery

State of Delivery	Number of Contracts	(%) Number of Contracts	Receivables Outstanding	(%) Receivables Outstanding
NSW	2,088	29.71%	\$ 59,238,872	31.91%
VIC	2,255	32.09%	\$ 59,803,776	32.22%
QLD	1,454	20.69%	\$ 37,188,379	20.03%
WA	600	8.54%	\$ 14,325,719	7.72%
SA	385	5.48%	\$ 8,865,018	4.78%
ACT	66	0.94%	\$ 1,661,498	0.90%
TAS	125	1.78%	\$ 2,987,475	1.61%
NT	54	0.77%	\$ 1,556,667	0.84%
Total	7,027	100.00%	\$ 185,627,405	100.00%



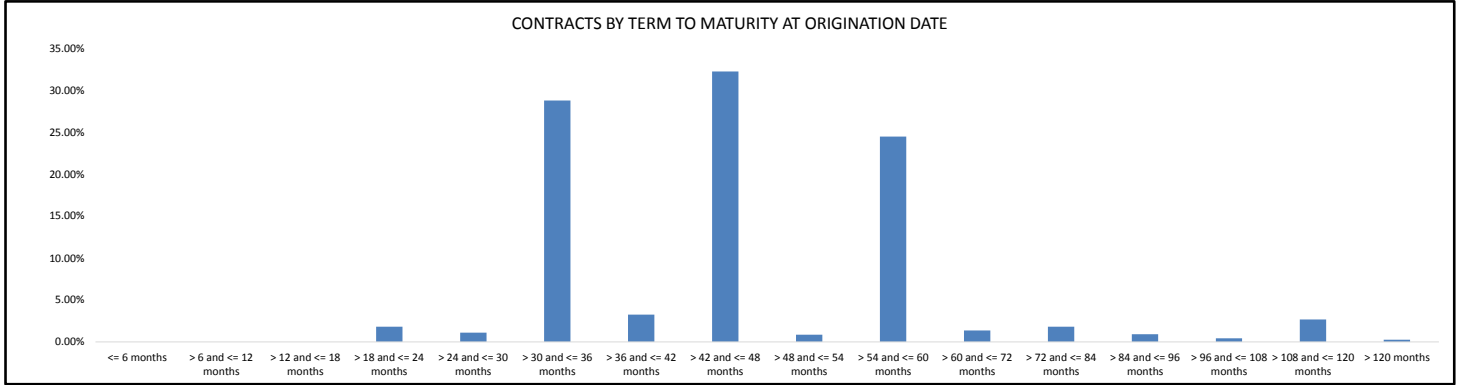
Contracts by Manufacturer

Manufacturer	Number of Contracts	(%) Number of Contracts	Receivables Outstanding	(%) Receivables Outstanding
TOYOTA	1,735	24.69%	\$ 42,098,825	22.68%
FORD	1,000	14.23%	\$ 22,630,918	12.19%
HOLDEN	613	8.72%	\$ 12,211,178	6.58%
HYUNDAI	499	7.10%	\$ 8,696,638	4.68%
ISUZU	138	1.96%	\$ 8,653,440	4.66%
VOLKSWAGEN	339	4.82%	\$ 7,402,803	3.99%
KIA	388	5.52%	\$ 7,498,557	4.04%
MAZDA	308	4.38%	\$ 6,379,882	3.44%
NISSAN	281	4.00%	\$ 5,760,704	3.10%
MITSUBISHI	278	3.96%	\$ 5,631,444	3.03%
JEEP	219	3.12%	\$ 5,430,000	2.93%
ISUZUUTE	202	2.87%	\$ 5,571,890	3.00%
KENWORTH	29	0.41%	\$ 5,350,063	2.88%
MFUSO	92	1.31%	\$ 5,212,810	2.81%
SUBARU	196	2.79%	\$ 4,369,369	2.35%
MERCEDES	88	1.25%	\$ 3,954,003	2.13%
BYFORD	21	0.30%	\$ 2,944,192	1.59%
BMW	53	0.75%	\$ 2,341,804	1.26%
VOLVO	27	0.38%	\$ 2,344,604	1.26%
Others	521	7.41%	\$ 21,144,279	11.39%
Total	7,027	100.00%	\$ 185,627,405	100.00%



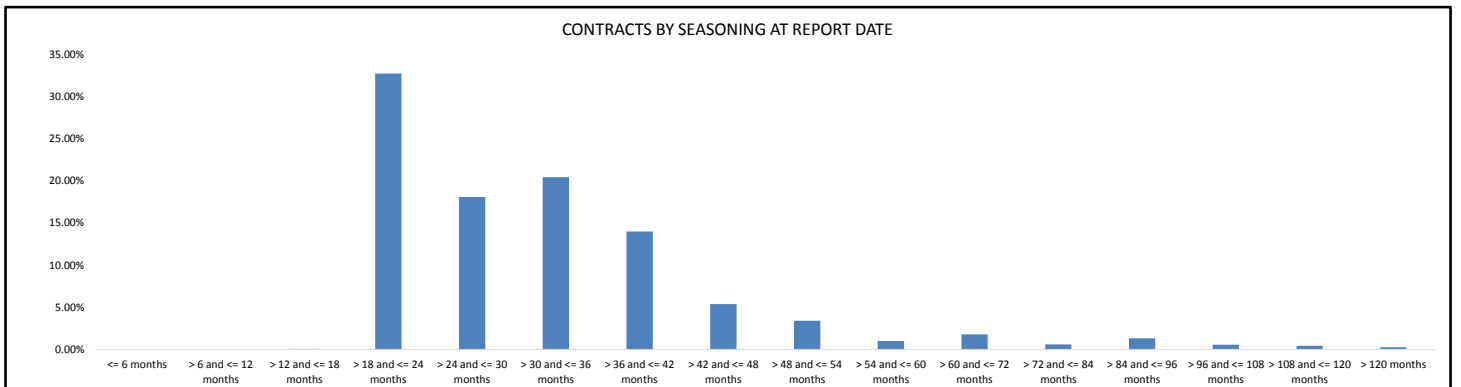
Contracts by Term to Maturity at Origination Date

Term to Maturity at Origination Date	Number of Contracts	(%) Number of Contracts	Receivables Outstanding	(%) Receivables Outstanding
<= 6 months	0	0.00%	\$ -	0.00%
> 6 and <= 12 months	0	0.00%	\$ -	0.00%
> 12 and <= 18 months	0	0.00%	\$ -	0.00%
> 18 and <= 24 months	186	2.65%	\$ 3,367,066	1.81%
> 24 and <= 30 months	99	1.41%	\$ 2,048,450	1.10%
> 30 and <= 36 months	2,443	34.77%	\$ 53,418,599	28.78%
> 36 and <= 42 months	352	5.01%	\$ 6,030,229	3.25%
> 42 and <= 48 months	2,388	33.98%	\$ 59,853,531	32.24%
> 48 and <= 54 months	106	1.51%	\$ 1,592,263	0.86%
> 54 and <= 60 months	1,152	16.39%	\$ 45,443,234	24.48%
> 60 and <= 72 months	110	1.57%	\$ 2,539,208	1.37%
> 72 and <= 84 months	72	1.02%	\$ 3,355,842	1.81%
> 84 and <= 96 months	36	0.51%	\$ 1,710,391	0.92%
> 96 and <= 108 months	17	0.24%	\$ 812,566	0.44%
> 108 and <= 120 months	53	0.75%	\$ 4,962,895	2.67%
> 120 months	13	0.19%	\$ 493,131	0.27%
Total	7,027	100.00%	\$ 185,627,405	100.00%



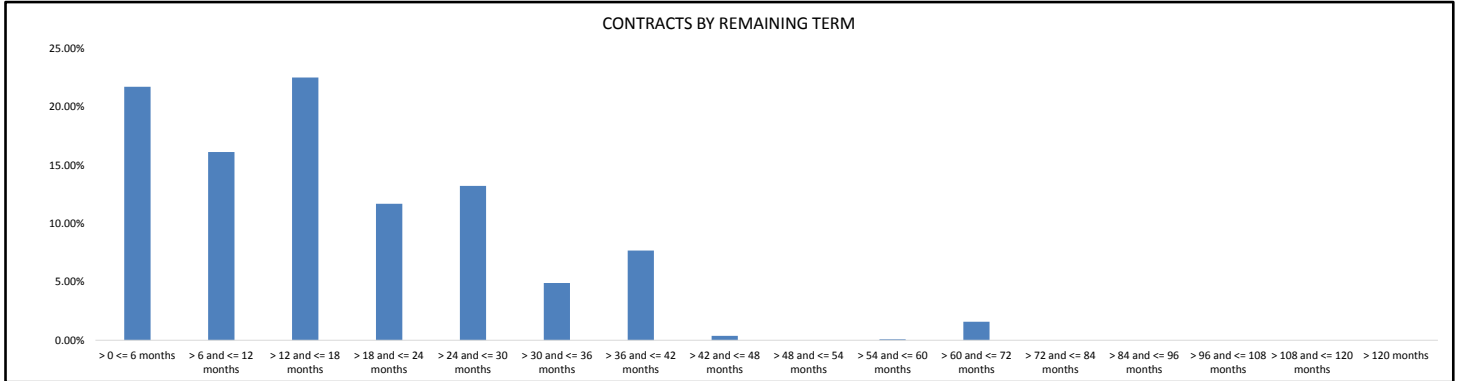
Contracts by Seasoning at Report Date

Seasoning at Report Date	Number of Contracts	(%) Number of Contracts	Receivables Outstanding	(%) Receivables Outstanding
<= 6 months	0	0.00%	\$ -	0.00%
> 6 and <= 12 months	0	0.00%	\$ -	0.00%
> 12 and <= 18 months	4	0.06%	\$ 89,167	0.05%
> 18 and <= 24 months	1,989	28.31%	\$ 60,766,854	32.74%
> 24 and <= 30 months	1,304	18.56%	\$ 33,578,009	18.09%
> 30 and <= 36 months	1,644	23.40%	\$ 37,912,566	20.42%
> 36 and <= 42 months	1,089	15.50%	\$ 25,974,188	13.99%
> 42 and <= 48 months	491	6.99%	\$ 9,992,544	5.38%
> 48 and <= 54 months	168	2.39%	\$ 6,306,510	3.40%
> 54 and <= 60 months	82	1.17%	\$ 1,864,102	1.00%
> 60 and <= 72 months	118	1.68%	\$ 3,295,773	1.78%
> 72 and <= 84 months	41	0.58%	\$ 1,108,496	0.60%
> 84 and <= 96 months	49	0.70%	\$ 2,431,159	1.31%
> 96 and <= 108 months	19	0.27%	\$ 1,030,224	0.55%
> 108 and <= 120 months	16	0.23%	\$ 784,682	0.42%
> 120 months	13	0.19%	\$ 493,131	0.27%
Total	7,027	100.00%	\$ 185,627,405	100.00%



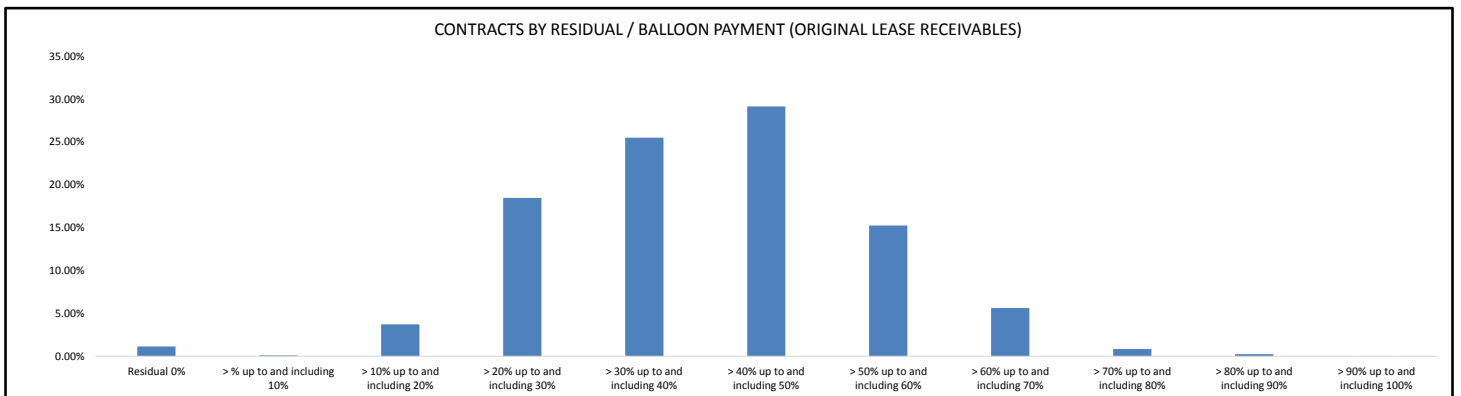
Contracts by Remaining Term

Remaining Term	Number of Contracts	(%) Number of Contracts	Receivables Outstanding	(%) Receivables Outstanding
> 0 <= 6 months	2,191	31.18%	\$ 40,351,639	21.74%
> 6 and <= 12 months	1,352	19.24%	\$ 29,972,727	16.15%
> 12 and <= 18 months	1,576	22.43%	\$ 41,825,526	22.53%
> 18 and <= 24 months	677	9.63%	\$ 21,732,843	11.71%
> 24 and <= 30 months	694	9.88%	\$ 24,567,535	13.23%
> 30 and <= 36 months	217	3.09%	\$ 9,102,159	4.90%
> 36 and <= 42 months	293	4.17%	\$ 14,280,116	7.69%
> 42 and <= 48 months	5	0.07%	\$ 693,278	0.37%
> 48 and <= 54 months	0	0.00%	\$ -	0.00%
> 54 and <= 60 months	1	0.01%	\$ 157,390	0.08%
> 60 and <= 72 months	21	0.30%	\$ 2,944,192	1.59%
> 72 and <= 84 months	0	0.00%	\$ -	0.00%
> 84 and <= 96 months	0	0.00%	\$ -	0.00%
> 96 and <= 108 months	0	0.00%	\$ -	0.00%
> 108 and <= 120 months	0	0.00%	\$ -	0.00%
> 120 months	0	0.00%	\$ -	0.00%
Total	7,027	100.00%	\$ 185,627,405	100.00%



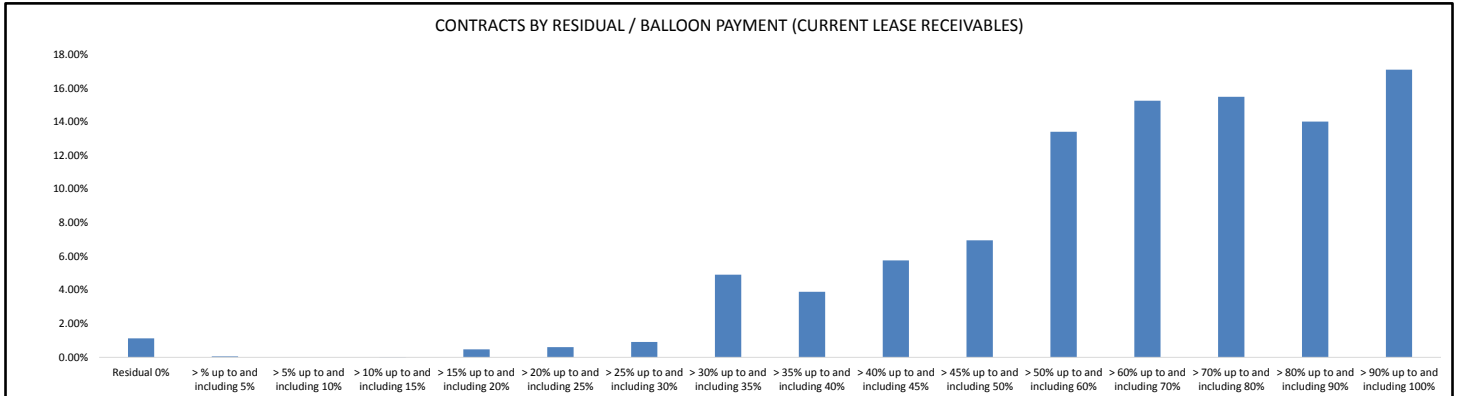
Contracts by Residual/Balloon Payment (Original Lease Receivables)

Residual/Balloon Payment (Original Lease Receivables)	Number of Contracts	(%) Number of Contracts	Receivables Outstanding	(%) Receivables Outstanding
Residual 0%	17	0.24%	\$ 2,102,042	1.13%
> % up to and including 10%	11	0.16%	\$ 181,914	0.10%
> 10% up to and including 20%	207	2.95%	\$ 6,903,347	3.72%
> 20% up to and including 30%	994	14.15%	\$ 34,290,995	18.47%
> 30% up to and including 40%	1,699	24.18%	\$ 47,305,863	25.48%
> 40% up to and including 50%	2,343	33.34%	\$ 54,081,259	29.13%
> 50% up to and including 60%	1,272	18.10%	\$ 28,290,659	15.24%
> 60% up to and including 70%	407	5.79%	\$ 10,446,684	5.63%
> 70% up to and including 80%	59	0.84%	\$ 1,564,359	0.84%
> 80% up to and including 90%	17	0.24%	\$ 442,025	0.24%
> 90% up to and including 100%	1	0.01%	\$ 18,256	0.01%
Total	7,027	100.00%	\$ 185,627,405	100.00%



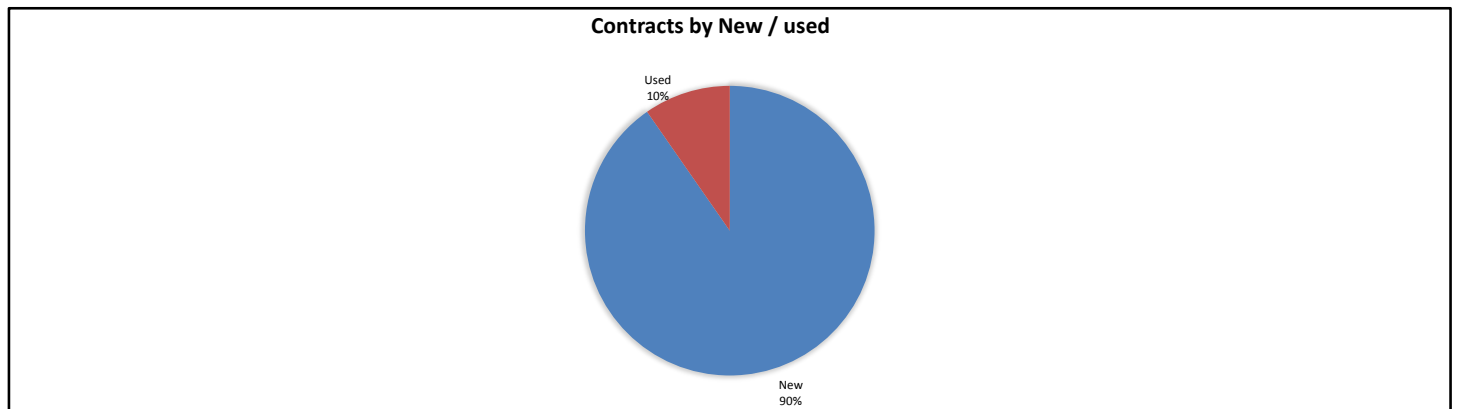
Contracts by Residual/Balloon Payment (Current Lease Receivables)

Residual/Balloon Payment (Current Lease Receivables)	Number of Contracts	(%) Number of Contracts	Receivables Outstanding	(%) Receivables Outstanding
Residual 0%	36	0.51%	\$ 2,102,042	1.13%
> % up to and including 5%	7	0.10%	\$ 98,861	0.05%
> 5% up to and including 10%	0	0.00%	\$ -	0.00%
> 10% up to and including 15%	2	0.03%	\$ 29,478	0.02%
> 15% up to and including 20%	7	0.10%	\$ 893,219	0.48%
> 20% up to and including 25%	23	0.33%	\$ 1,135,062	0.61%
> 25% up to and including 30%	36	0.51%	\$ 1,701,843	0.92%
> 30% up to and including 35%	174	2.48%	\$ 9,129,573	4.92%
> 35% up to and including 40%	200	2.85%	\$ 7,232,698	3.90%
> 40% up to and including 45%	289	4.11%	\$ 10,700,818	5.76%
> 45% up to and including 50%	344	4.90%	\$ 12,919,614	6.96%
> 50% up to and including 60%	775	11.03%	\$ 24,886,284	13.41%
> 60% up to and including 70%	1,046	14.89%	\$ 28,305,142	15.25%
> 70% up to and including 80%	1,220	17.36%	\$ 28,743,726	15.48%
> 80% up to and including 90%	1,194	16.99%	\$ 26,007,620	14.01%
> 90% up to and including 100%	1,674	23.82%	\$ 31,741,425	17.10%
Total	7,027	100.00%	\$ 185,627,405	100.00%



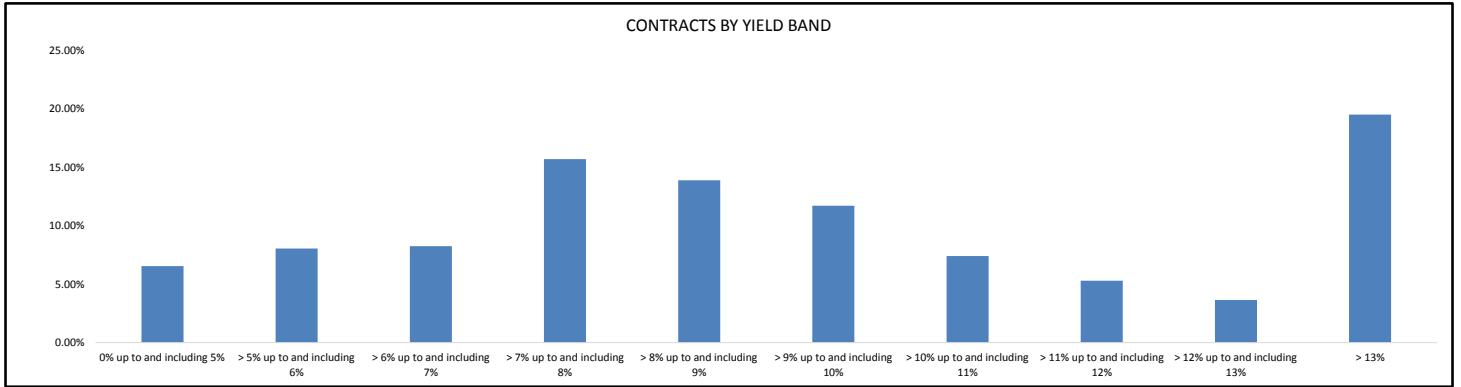
Contracts by New / Used

New / Used	Number of Contracts	(%) Number of Contracts	Receivables Outstanding	(%) Receivables Outstanding
New	6,475	92.14%	\$ 167,670,856	90.33%
Used	552	7.86%	\$ 17,956,549	9.67%
Total	7,027	100.00%	\$ 185,627,405	100.00%



Contracts by Yield Band

Yield Band	Number of Contracts	(%) Number of Contracts	Receivables Outstanding	(%) Receivables Outstanding
0% up to and including 5%	542	7.71%	\$ 12,146,201	6.54%
> 5% up to and including 6%	457	6.50%	\$ 14,938,971	8.05%
> 6% up to and including 7%	462	6.57%	\$ 15,306,280	8.25%
> 7% up to and including 8%	770	10.96%	\$ 29,152,189	15.70%
> 8% up to and including 9%	896	12.75%	\$ 25,772,427	13.88%
> 9% up to and including 10%	855	12.17%	\$ 21,737,989	11.71%
> 10% up to and including 11%	557	7.93%	\$ 13,740,765	7.40%
> 11% up to and including 12%	446	6.35%	\$ 9,837,637	5.30%
> 12% up to and including 13%	323	4.60%	\$ 6,779,256	3.65%
> 13%	1,719	24.46%	\$ 36,215,691	19.51%
Total	7,027	100.00%	\$ 185,627,405	100.00%



Contracts by Interest Rate

Interest Rate	Number of Contracts	(%) Number of Contracts	Receivables Outstanding	(%) Receivables Outstanding
0%	0	0.00%	\$ -	0.00%
> 0% up to and including 2%	0	0.00%	\$ -	0.00%
> 2% up to and including 4%	157	2.23%	\$ 3,551,232	1.91%
> 4% up to and including 6%	1,363	19.40%	\$ 39,855,286	21.47%
> 6% up to and including 8%	4,706	66.97%	\$ 119,290,505	64.26%
> 8% up to and including 10%	660	9.39%	\$ 18,475,935	9.95%
> 10% up to and including 12%	107	1.52%	\$ 2,541,693	1.37%
> 12% up to and including 14%	31	0.44%	\$ 1,806,539	0.97%
> 14% up to and including 16%	3	0.04%	\$ 106,214	0.06%
> 16% up to and including 18%	0	0.00%	\$ -	0.00%
> 18% up to and including 20%	0	0.00%	\$ -	0.00%
> 20%	0	0.00%	\$ -	0.00%
Total	7,027	100.00%	\$ 185,627,405	100.00%

