



FP Turbo Series 2016-1 Trust as at 31 July 2018

Portfolio Summary	
Portfolio size	\$ 154,780,751.83
Number of contracts	6,078
Number of obligors	791
Weighted average yield (p.a.)	10.68%
Average contract balance (current)	\$ 25,465.74
Maximum contract balance (current)	\$ 206,634.17
Average contract balance (original)	\$ 46,211.54
Maximum contract balance (original)	\$ 487,571.03
Weighted average total contract term (months)	51.58
Weighted average seasoning (months)	35.98
Weighted average remaining term (months)	15.61
Maximum remaining term (months)	63.06
Weighted average residual (current)	61.07%
Weighted average residual (original)	33.53%
Weighted average balloon percentage	70.60%
Balloon payments contract balance	\$ 152,792,390.68
Balloon payments contract count	6,039
Balloon payments value	\$ 109,281,742.38
Maximum balloon payment	\$ 189,486.36
Maximum contract balance	\$ 206,104.26

Top 10 Obligor

Customer Code	Number of Contracts	(%) Number of Contracts	Receivables Outstanding	(%) Receivables Outstanding
AAN0481	480	7.90%	\$ 11,174,065	7.22%
ARO0130	84	1.38%	\$ 6,904,151	4.46%
AAG0025	251	4.13%	\$ 6,636,930	4.29%
ARI0248	334	5.50%	\$ 6,256,678	4.04%
ATE0041	280	4.61%	\$ 5,825,064	3.76%
AMU0167	118	1.94%	\$ 5,753,787	3.72%
ASP0122	29	0.48%	\$ 3,497,551	2.26%
ATS0013	150	2.47%	\$ 3,395,748	2.19%
ARA0071	62	1.02%	\$ 2,726,229	1.76%
AGI0035	76	1.25%	\$ 2,256,972	1.46%
Total	1,864	30.67%	\$ 54,427,175	35.16%

Top 10 Contract Balance

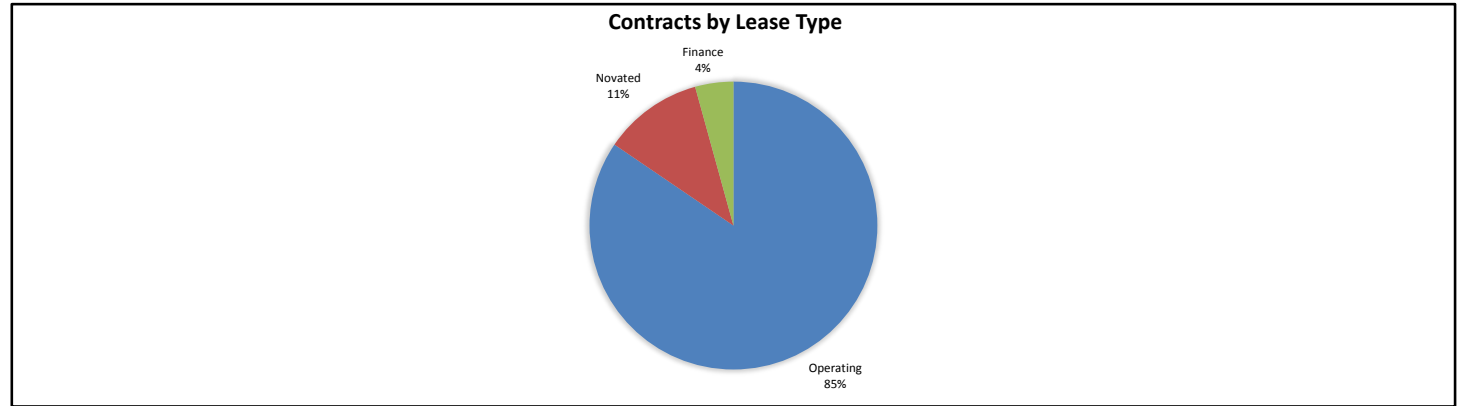
	Receivables Outstanding
1st Decile Upper Limit	\$ 206,634
2nd Decile Upper Limit	\$ 206,104
3rd Decile Upper Limit	\$ 206,031
4th Decile Upper Limit	\$ 205,920
5th Decile Upper Limit	\$ 205,623
6th Decile Upper Limit	\$ 204,838
7th Decile Upper Limit	\$ 203,697
8th Decile Upper Limit	\$ 203,544
9th Decile Upper Limit	\$ 198,900
10th Decile Upper Limit	\$ 198,526

Top 10 Contract Aggregate Balance

	Receivables Outstanding
Aggregate Balance- 1st Decile	\$ 595,578
Aggregate Balance- 2nd Decile	\$ 397,800
Aggregate Balance- 3rd Decile	\$ 206,634
Aggregate Balance- 4th Decile	\$ 206,104
Aggregate Balance- 5th Decile	\$ 206,031
Aggregate Balance- 6th Decile	\$ 205,920
Aggregate Balance- 7th Decile	\$ 205,623
Aggregate Balance- 8th Decile	\$ 204,838
Aggregate Balance- 9th Decile	\$ 203,697
Aggregate Balance- 10th Decile	\$ 203,544
Total	\$ 2,635,768

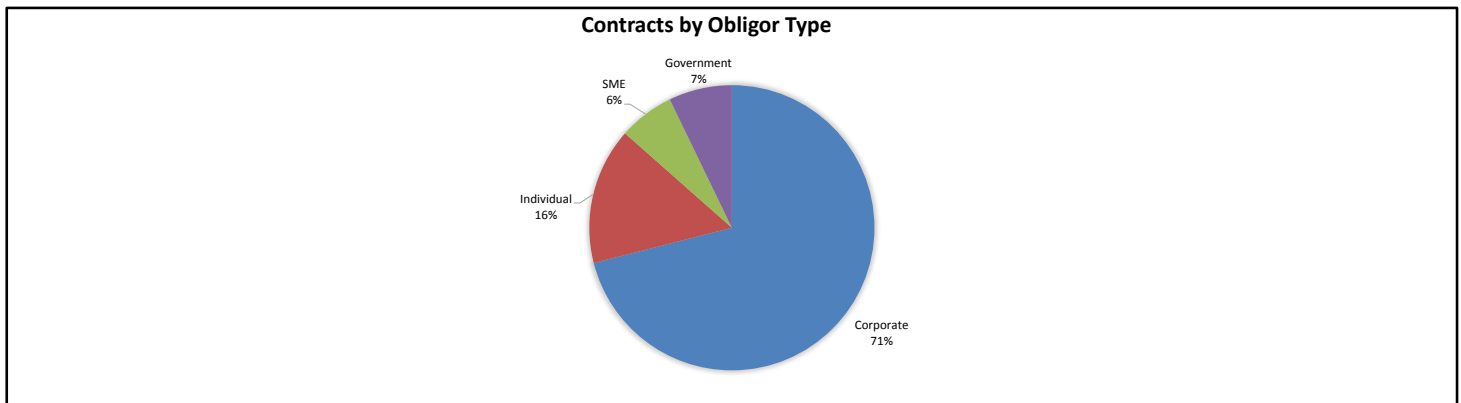
Contracts by Lease Type

Lease Type	Number of Contracts	(%) Number of Contracts	Receivables Outstanding	(%) Receivables Outstanding
Operating	5,138	84.53%	\$ 130,805,308	84.51%
Novated	647	10.64%	\$ 17,335,048	11.20%
Finance	293	4.82%	\$ 6,640,396	4.29%
Total	6,078	100.00%	\$ 154,780,752	100.00%



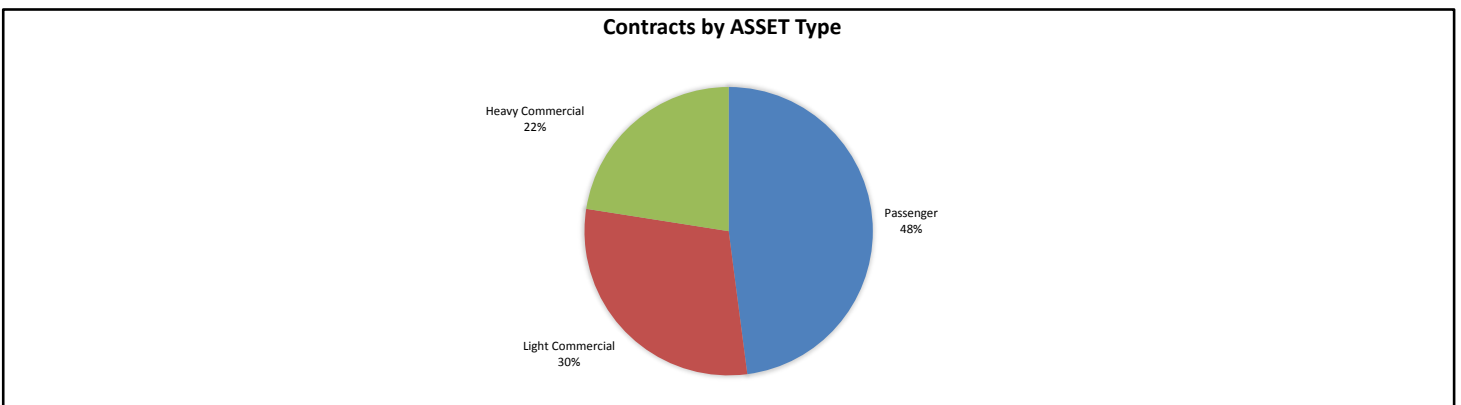
Contracts by Obligor Type

Obligor Type	Number of Contracts	(%) Number of Contracts	Receivables Outstanding	(%) Receivables Outstanding
Corporate	4,395	72.31%	\$ 109,929,283	71.02%
Individual	940	15.47%	\$ 23,975,443	15.49%
SME	524	8.62%	\$ 9,776,409	6.32%
Government	219	3.60%	\$ 11,099,616	7.17%
Total	6,078	100.00%	\$ 154,780,752	100.00%



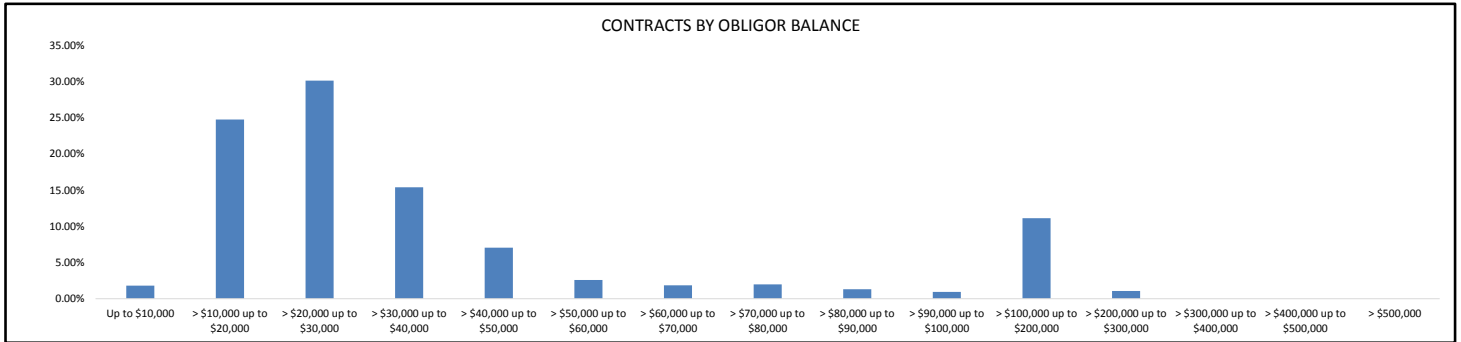
Contracts by Asset Type

Asset Type	Number of Contracts	(%) Number of Contracts	Receivables Outstanding	(%) Receivables Outstanding
Passenger	3,704	60.94%	\$ 74,194,690	47.94%
Light Commercial	1,864	30.67%	\$ 45,728,660	29.54%
Heavy Commercial	510	8.39%	\$ 34,857,402	22.52%
Total	6,078	100.00%	\$ 154,780,752	100.00%



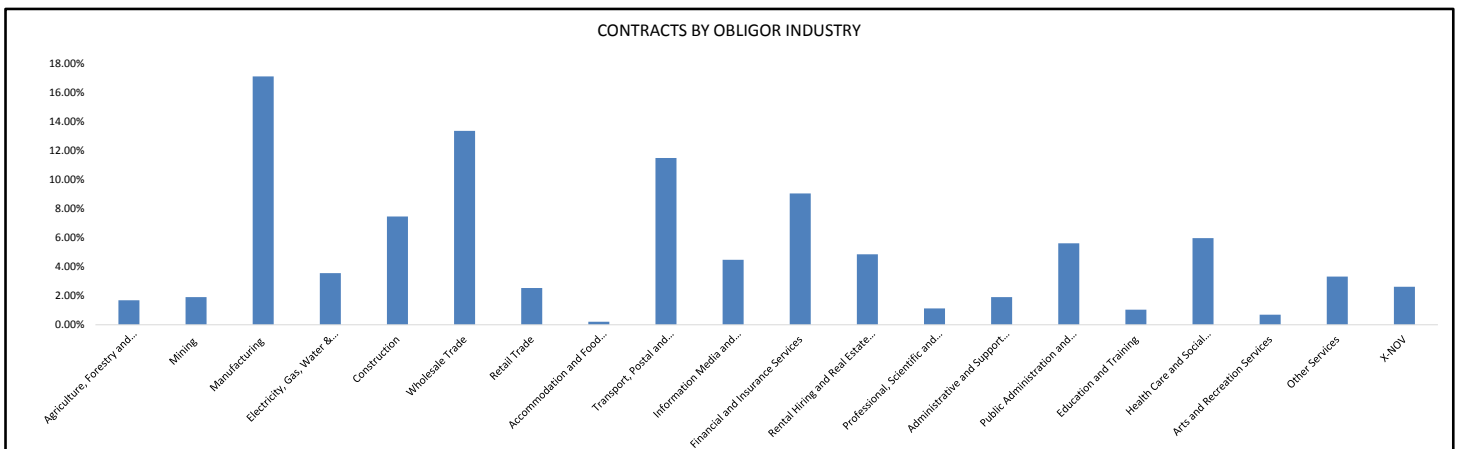
Contracts by Obligor Balance

Obligor Balance	Number of Contracts	(%) Number of Contracts	Receivables Outstanding	(%) Receivables Outstanding
Up to \$10,000	403	6.63%	\$ 2,786,464	1.80%
> \$10,000 up to \$20,000	2,510	41.30%	\$ 38,329,598	24.76%
> \$20,000 up to \$30,000	1,894	31.16%	\$ 46,634,944	30.13%
> \$30,000 up to \$40,000	696	11.45%	\$ 23,827,042	15.39%
> \$40,000 up to \$50,000	250	4.11%	\$ 10,908,389	7.05%
> \$50,000 up to \$60,000	73	1.20%	\$ 4,016,241	2.59%
> \$60,000 up to \$70,000	44	0.72%	\$ 2,861,652	1.85%
> \$70,000 up to \$80,000	41	0.67%	\$ 3,074,644	1.99%
> \$80,000 up to \$90,000	24	0.39%	\$ 2,035,490	1.32%
> \$90,000 up to \$100,000	15	0.25%	\$ 1,441,569	0.93%
> \$100,000 up to \$200,000	120	1.97%	\$ 17,222,328	11.13%
> \$200,000 up to \$300,000	8	0.13%	\$ 1,642,391	1.06%
> \$300,000 up to \$400,000	0	0.00%	\$ -	0.00%
> \$400,000 up to \$500,000	0	0.00%	\$ -	0.00%
> \$500,000	0	0.00%	\$ -	0.00%
Total	6,078	100.00%	\$ 154,780,752	100.00%



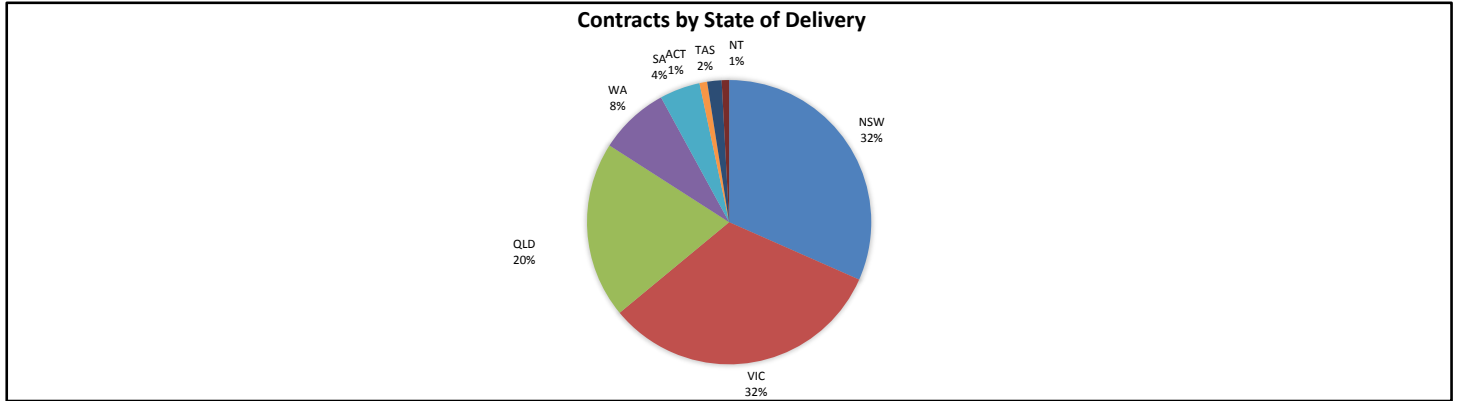
Contracts by Obligor Industry

Obligor Industry	Number of Contracts	(%) Number of Contracts	Receivables Outstanding	(%) Receivables Outstanding
ANZSIC Industry Division: Agriculture, Forestry and Fishing	104	1.71%	\$ 2,615,696	1.69%
ANZSIC Industry Division: Mining	103	1.69%	\$ 2,939,723	1.90%
ANZSIC Industry Division: Manufacturing	982	16.16%	\$ 26,478,623	17.11%
ANZSIC Industry Division: Electricity, Gas, Water and Waste Services	243	4.00%	\$ 5,506,997	3.56%
ANZSIC Industry Division: Construction	466	7.67%	\$ 11,541,253	7.46%
ANZSIC Industry Division: Wholesale Trade	854	14.05%	\$ 20,676,837	13.36%
ANZSIC Industry Division: Retail Trade	183	3.01%	\$ 3,923,739	2.54%
ANZSIC Industry Division: Accommodation and Food Services	17	0.28%	\$ 321,600	0.21%
ANZSIC Industry Division: Transport, Postal and Warehousing	348	5.73%	\$ 17,791,074	11.49%
ANZSIC Industry Division: Information Media and Telecommunications	326	5.36%	\$ 6,935,497	4.48%
ANZSIC Industry Division: Financial and Insurance Services	605	9.95%	\$ 14,006,608	9.05%
ANZSIC Industry Division: Rental, Hiring and Real Estate Services	407	6.70%	\$ 7,521,672	4.86%
ANZSIC Industry Division: Professional, Scientific and Technical Services	73	1.20%	\$ 1,745,251	1.13%
ANZSIC Industry Division: Administrative and Support Services	137	2.25%	\$ 2,945,979	1.90%
ANZSIC Industry Division: Public Administration and Safety	175	2.88%	\$ 8,684,635	5.61%
ANZSIC Industry Division: Education and Training	67	1.10%	\$ 1,615,731	1.04%
ANZSIC Industry Division: Health Care and Social Assistance	554	9.11%	\$ 9,244,582	5.97%
ANZSIC Industry Division: Arts and Recreational Services	60	0.99%	\$ 1,081,802	0.70%
Other Services	205	3.37%	\$ 5,147,684	3.33%
X-NOV	169	2.78%	\$ 4,055,769	2.62%
Total	6,078	100.00%	\$ 154,780,752	100.00%



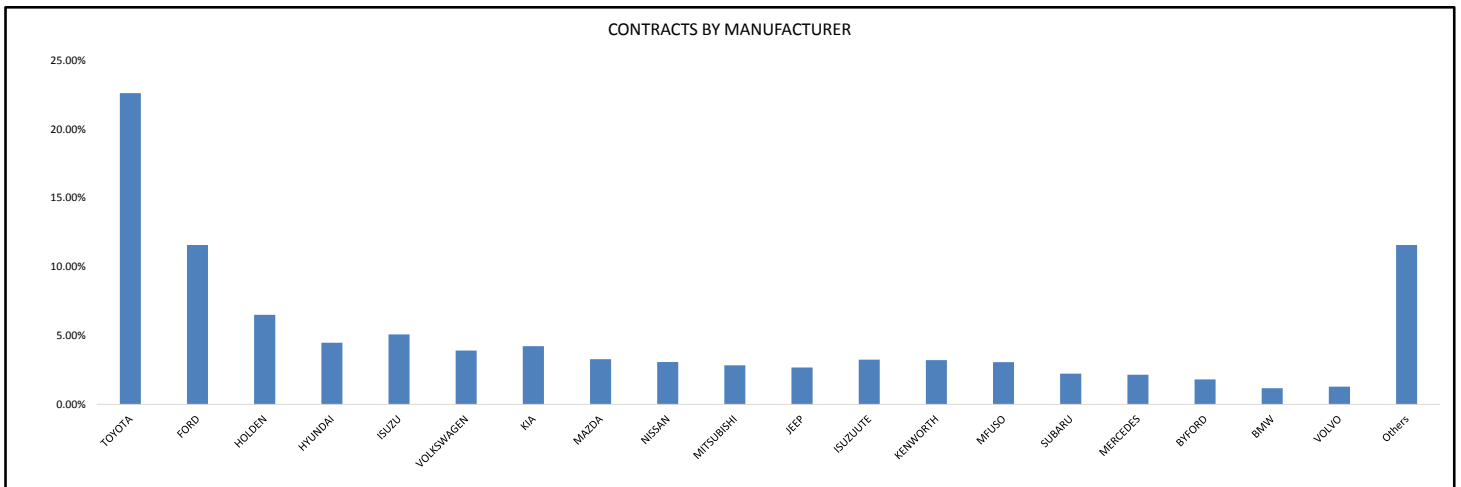
Contracts by State of Delivery

State of Delivery	Number of Contracts	(%) Number of Contracts	Receivables Outstanding	(%) Receivables Outstanding
NSW	1,759	28.94%	\$ 48,941,133	31.62%
VIC	1,989	32.72%	\$ 50,115,315	32.38%
QLD	1,257	20.68%	\$ 31,076,081	20.08%
WA	544	8.95%	\$ 12,336,897	7.97%
SA	316	5.20%	\$ 7,121,684	4.60%
ACT	55	0.90%	\$ 1,357,765	0.88%
TAS	109	1.79%	\$ 2,528,358	1.63%
NT	49	0.81%	\$ 1,303,519	0.84%
Total	6,078	100.00%	\$ 154,780,752	100.00%



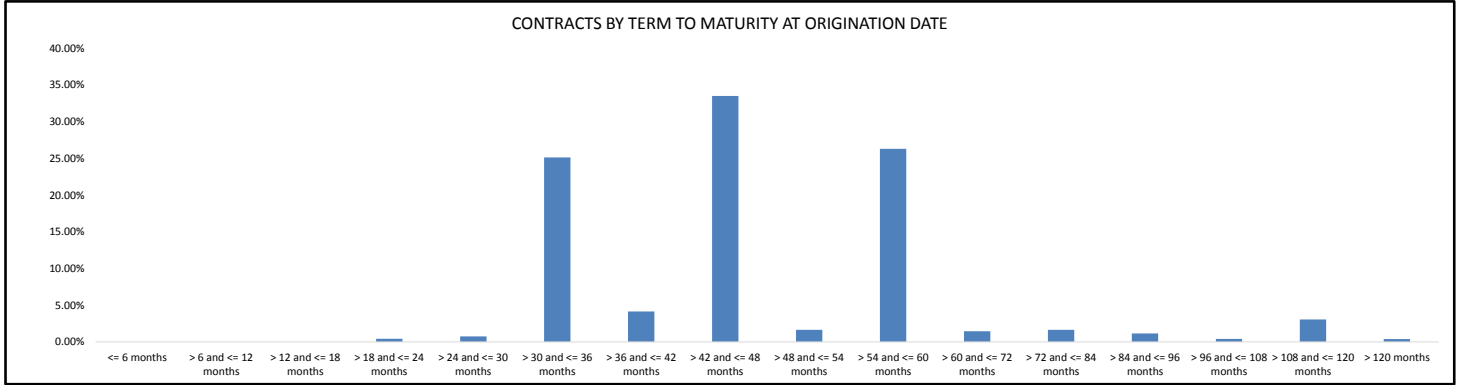
Contracts by Manufacturer

Manufacturer	Number of Contracts	(%) Number of Contracts	Receivables Outstanding	(%) Receivables Outstanding
TOYOTA	1,515	24.93%	\$ 34,992,883	22.61%
FORD	821	13.51%	\$ 17,917,190	11.58%
HOLDEN	549	9.03%	\$ 10,074,714	6.51%
HYUNDAI	418	6.88%	\$ 6,921,581	4.47%
ISUZU	133	2.19%	\$ 7,856,539	5.08%
VOLKSWAGEN	294	4.84%	\$ 6,053,540	3.91%
KIA	355	5.84%	\$ 6,545,902	4.23%
MAZDA	256	4.21%	\$ 5,073,371	3.28%
NISSAN	253	4.16%	\$ 4,753,388	3.07%
MITSUBISHI	218	3.59%	\$ 4,394,182	2.84%
JEEP	170	2.80%	\$ 4,150,039	2.68%
ISUZUUTE	193	3.18%	\$ 5,021,988	3.24%
KENWORTH	29	0.48%	\$ 4,981,113	3.22%
MFUSO	89	1.46%	\$ 4,738,055	3.06%
SUBARU	158	2.60%	\$ 3,448,829	2.23%
MERCEDES	78	1.28%	\$ 3,327,692	2.15%
BYFORD	21	0.35%	\$ 2,806,996	1.81%
BMW	44	0.72%	\$ 1,807,146	1.17%
VOLVO	26	0.43%	\$ 1,998,975	1.29%
Others	458	7.54%	\$ 17,916,630	11.58%
Total	6,078	100.00%	\$ 154,780,752	100.00%



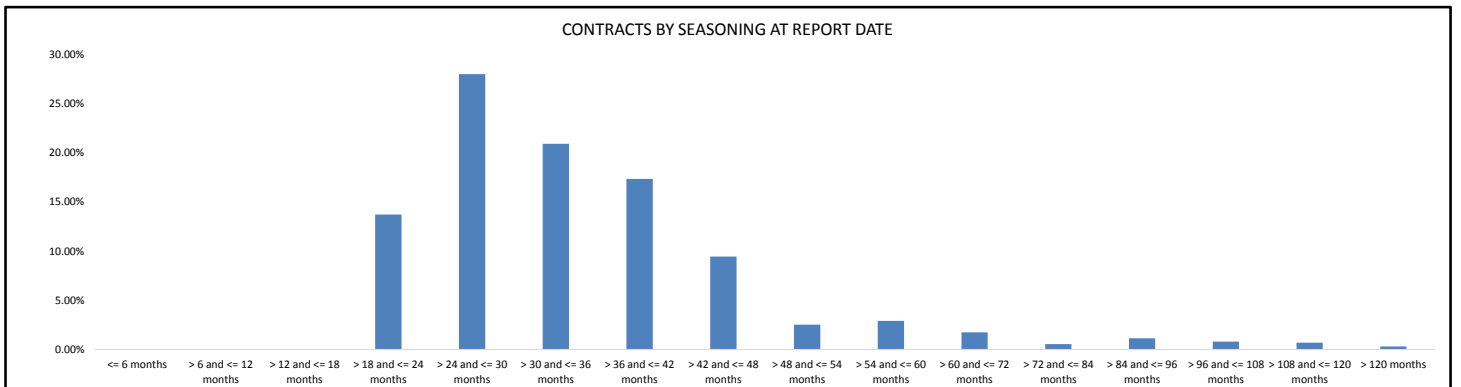
Contracts by Term to Maturity at Origination Date

Term to Maturity at Origination Date	Number of Contracts	(%) Number of Contracts	Receivables Outstanding	(%) Receivables Outstanding
<= 6 months	0	0.00%	\$ -	0.00%
> 6 and <= 12 months	0	0.00%	\$ -	0.00%
> 12 and <= 18 months	0	0.00%	\$ -	0.00%
> 18 and <= 24 months	61	1.00%	\$ 662,649	0.43%
> 24 and <= 30 months	60	0.99%	\$ 1,143,502	0.74%
> 30 and <= 36 months	1,848	30.40%	\$ 38,905,499	25.14%
> 36 and <= 42 months	364	5.99%	\$ 6,411,396	4.14%
> 42 and <= 48 months	2,221	36.54%	\$ 51,863,740	33.51%
> 48 and <= 54 months	173	2.85%	\$ 2,531,597	1.64%
> 54 and <= 60 months	1,098	18.07%	\$ 40,729,454	26.31%
> 60 and <= 72 months	76	1.25%	\$ 2,247,587	1.45%
> 72 and <= 84 months	51	0.84%	\$ 2,555,861	1.65%
> 84 and <= 96 months	42	0.69%	\$ 1,793,589	1.16%
> 96 and <= 108 months	14	0.23%	\$ 615,806	0.40%
> 108 and <= 120 months	54	0.89%	\$ 4,731,737	3.06%
> 120 months	16	0.26%	\$ 588,333	0.38%
Total	6,078	100.00%	\$ 154,780,752	100.00%



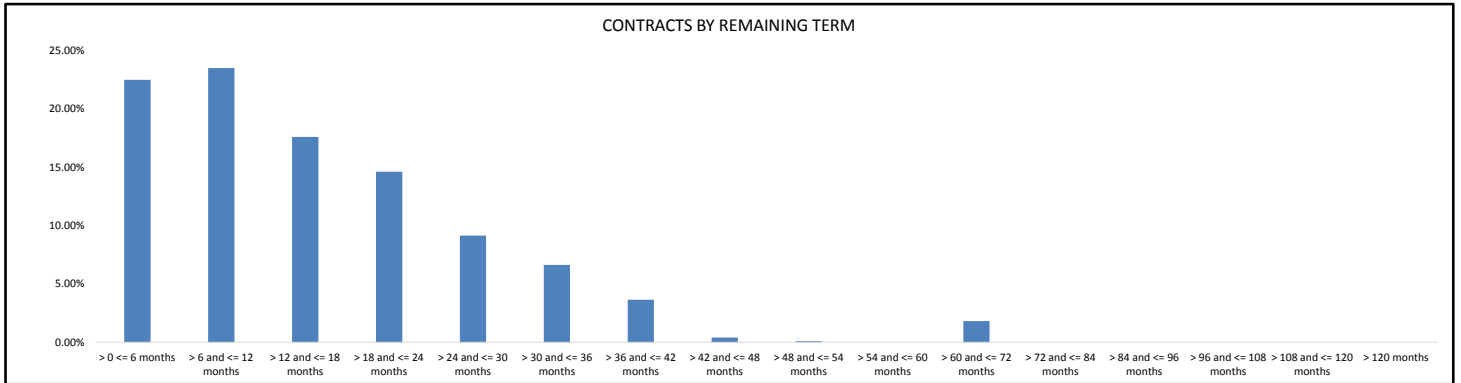
Contracts by Seasoning at Report Date

Seasoning at Report Date	Number of Contracts	(%) Number of Contracts	Receivables Outstanding	(%) Receivables Outstanding
<= 6 months	0	0.00%	\$ -	0.00%
> 6 and <= 12 months	0	0.00%	\$ -	0.00%
> 12 and <= 18 months	0	0.00%	\$ -	0.00%
> 18 and <= 24 months	706	11.62%	\$ 21,222,394	13.71%
> 24 and <= 30 months	1,590	26.16%	\$ 43,309,767	27.98%
> 30 and <= 36 months	1,419	23.35%	\$ 32,359,896	20.91%
> 36 and <= 42 months	1,116	18.36%	\$ 26,829,375	17.33%
> 42 and <= 48 months	742	12.21%	\$ 14,609,234	9.44%
> 48 and <= 54 months	204	3.36%	\$ 3,891,060	2.51%
> 54 and <= 60 months	89	1.46%	\$ 4,498,715	2.91%
> 60 and <= 72 months	85	1.40%	\$ 2,699,071	1.74%
> 72 and <= 84 months	26	0.43%	\$ 836,622	0.54%
> 84 and <= 96 months	43	0.71%	\$ 1,758,297	1.14%
> 96 and <= 108 months	23	0.38%	\$ 1,243,459	0.80%
> 108 and <= 120 months	22	0.36%	\$ 1,054,805	0.68%
> 120 months	13	0.21%	\$ 468,058	0.30%
Total	6,078	100.00%	\$ 154,780,752	100.00%



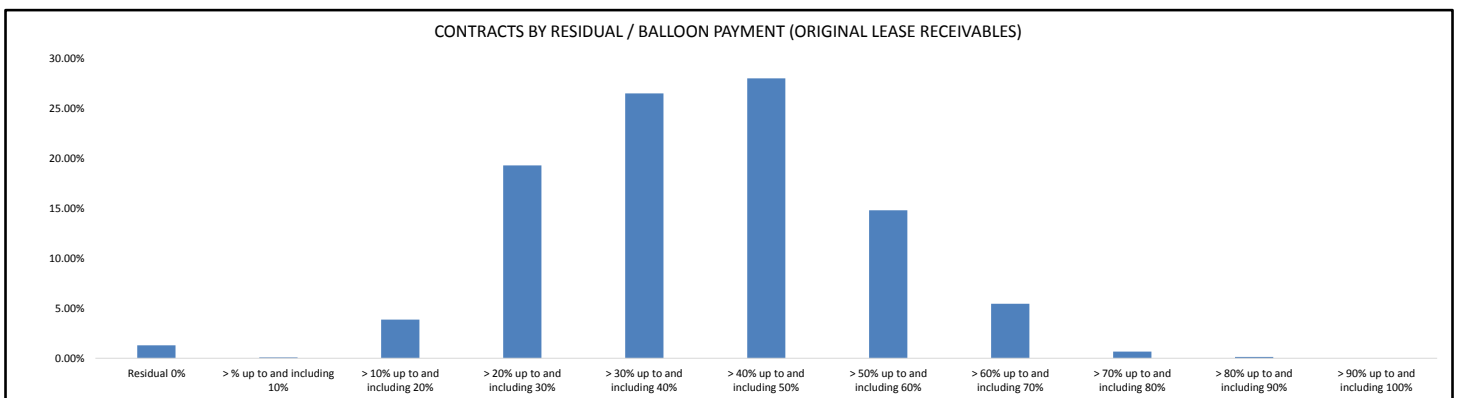
Contracts by Remaining Term

Remaining Term	Number of Contracts	(%) Number of Contracts	Receivables Outstanding	(%) Receivables Outstanding
> 0 <= 6 months	1,981	32.59%	\$ 34,839,597	22.51%
> 6 and <= 12 months	1,593	26.21%	\$ 36,394,664	23.51%
> 12 and <= 18 months	1,057	17.39%	\$ 27,262,296	17.61%
> 18 and <= 24 months	668	10.99%	\$ 22,641,444	14.63%
> 24 and <= 30 months	403	6.63%	\$ 14,151,834	9.14%
> 30 and <= 36 months	250	4.11%	\$ 10,271,789	6.64%
> 36 and <= 42 months	101	1.66%	\$ 5,645,927	3.65%
> 42 and <= 48 months	3	0.05%	\$ 615,351	0.40%
> 48 and <= 54 months	1	0.02%	\$ 150,854	0.10%
> 54 and <= 60 months	0	0.00%	\$ -	0.00%
> 60 and <= 72 months	21	0.35%	\$ 2,806,996	1.81%
> 72 and <= 84 months	0	0.00%	\$ -	0.00%
> 84 and <= 96 months	0	0.00%	\$ -	0.00%
> 96 and <= 108 months	0	0.00%	\$ -	0.00%
> 108 and <= 120 months	0	0.00%	\$ -	0.00%
> 120 months	0	0.00%	\$ -	0.00%
Total	6,078	100.00%	\$ 154,780,752	100.00%



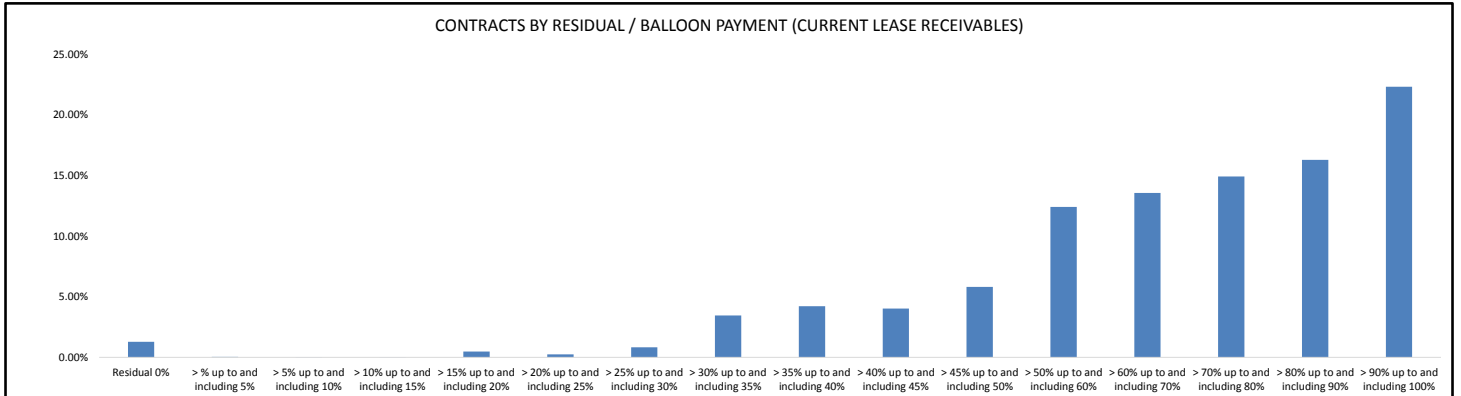
Contracts by Residual/Balloon Payment (Original Lease Receivables)

Residual/Balloon Payment (Original Lease Receivables)	Number of Contracts	(%) Number of Contracts	Receivables Outstanding	(%) Receivables Outstanding
Residual 0%	17	0.28%	\$ 1,988,361	1.28%
> % up to and including 10%	10	0.16%	\$ 127,134	0.08%
> 10% up to and including 20%	187	3.08%	\$ 5,979,431	3.86%
> 20% up to and including 30%	912	15.00%	\$ 29,850,602	19.29%
> 30% up to and including 40%	1,550	25.50%	\$ 40,970,930	26.47%
> 40% up to and including 50%	1,930	31.75%	\$ 43,302,870	27.98%
> 50% up to and including 60%	1,074	17.67%	\$ 22,892,375	14.79%
> 60% up to and including 70%	349	5.74%	\$ 8,436,953	5.45%
> 70% up to and including 80%	41	0.67%	\$ 1,034,977	0.67%
> 80% up to and including 90%	8	0.13%	\$ 197,120	0.13%
> 90% up to and including 100%	0	0.00%	\$ -	0.00%
Total	6,078	100.00%	\$ 154,780,752	100.00%



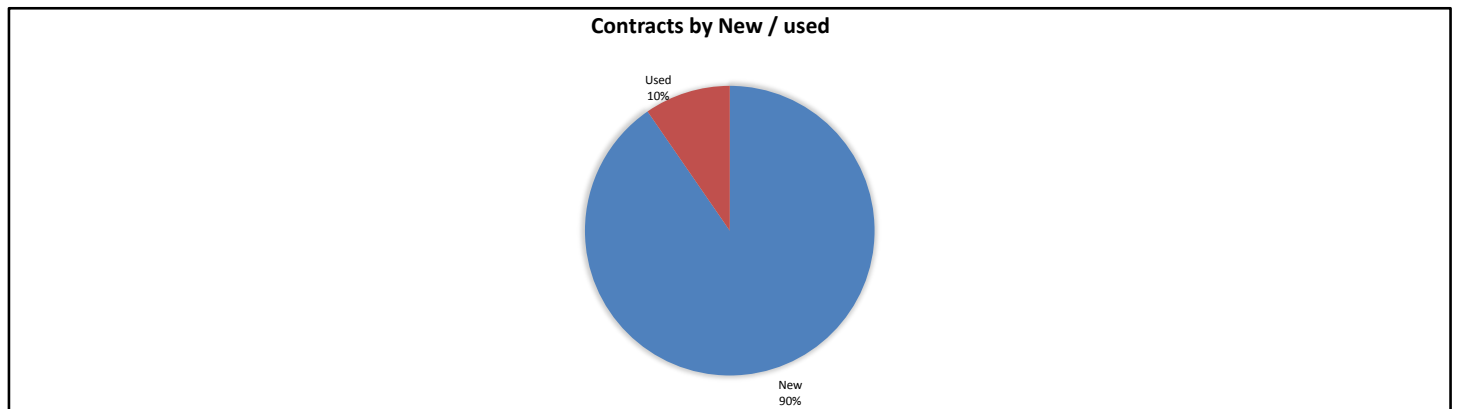
Contracts by Residual/Balloon Payment (Current Lease Receivables)

Residual/Balloon Payment (Current Lease Receivables)	Number of Contracts	(%) Number of Contracts	Receivables Outstanding	(%) Receivables Outstanding
Residual 0%	39	0.64%	\$ 1,988,361	1.28%
> % up to and including 5%	5	0.08%	\$ 56,518	0.04%
> 5% up to and including 10%	1	0.02%	\$ 5,688	0.00%
> 10% up to and including 15%	1	0.02%	\$ 19,872	0.01%
> 15% up to and including 20%	5	0.08%	\$ 752,905	0.49%
> 20% up to and including 25%	9	0.15%	\$ 392,372	0.25%
> 25% up to and including 30%	25	0.41%	\$ 1,286,242	0.83%
> 30% up to and including 35%	102	1.68%	\$ 5,346,961	3.45%
> 35% up to and including 40%	166	2.73%	\$ 6,529,177	4.22%
> 40% up to and including 45%	199	3.27%	\$ 6,239,579	4.03%
> 45% up to and including 50%	232	3.82%	\$ 9,007,401	5.82%
> 50% up to and including 60%	557	9.16%	\$ 19,226,056	12.42%
> 60% up to and including 70%	783	12.88%	\$ 21,013,377	13.58%
> 70% up to and including 80%	1,020	16.78%	\$ 23,110,723	14.93%
> 80% up to and including 90%	1,138	18.72%	\$ 25,225,914	16.30%
> 90% up to and including 100%	1,796	29.55%	\$ 34,579,606	22.34%
Total	6,078	100.00%	\$ 154,780,752	100.00%



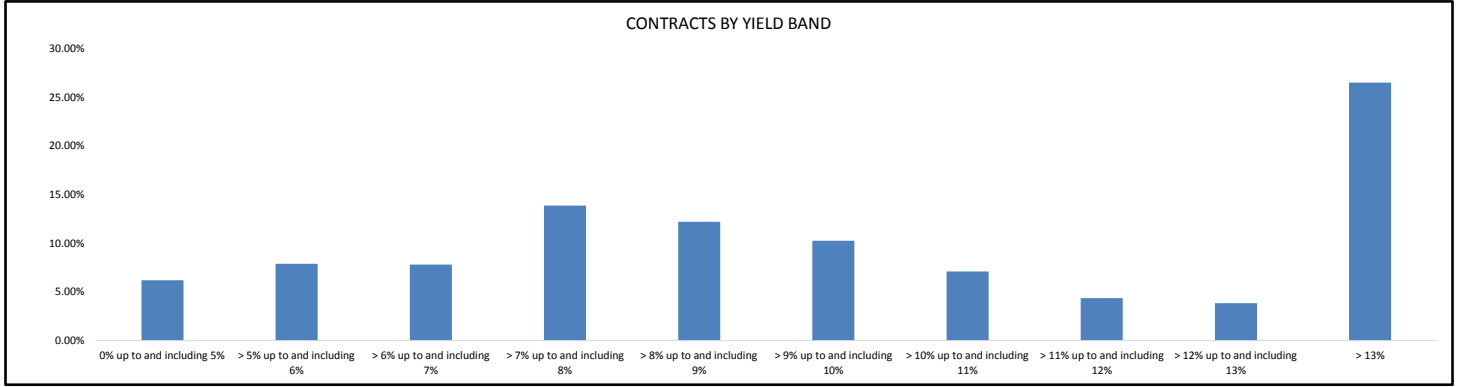
Contracts by New / Used

New / Used	Number of Contracts	(%) Number of Contracts	Receivables Outstanding	(%) Receivables Outstanding
New	5,628	92.60%	\$ 139,905,857	90.39%
Used	450	7.40%	\$ 14,874,895	9.61%
Total	6,078	100.00%	\$ 154,780,752	100.00%



Contracts by Yield Band

Yield Band	Number of Contracts	(%) Number of Contracts	Receivables Outstanding	(%) Receivables Outstanding
0% up to and including 5%	438	7.21%	\$ 9,579,546	6.19%
> 5% up to and including 6%	371	6.10%	\$ 12,209,841	7.89%
> 6% up to and including 7%	385	6.33%	\$ 12,091,043	7.81%
> 7% up to and including 8%	593	9.76%	\$ 21,451,293	13.86%
> 8% up to and including 9%	691	11.37%	\$ 18,892,233	12.21%
> 9% up to and including 10%	668	10.99%	\$ 15,862,039	10.25%
> 10% up to and including 11%	474	7.80%	\$ 10,993,458	7.10%
> 11% up to and including 12%	346	5.69%	\$ 6,737,787	4.35%
> 12% up to and including 13%	289	4.75%	\$ 5,952,250	3.85%
> 13%	1,823	29.99%	\$ 41,011,262	26.50%
Total	6,078	100.00%	\$ 154,780,752	100.00%



Contracts by Interest Rate

Interest Rate	Number of Contracts	(%) Number of Contracts	Receivables Outstanding	(%) Receivables Outstanding
0%	0	0.00%	\$ -	0.00%
> 0% up to and including 2%	0	0.00%	\$ -	0.00%
> 2% up to and including 4%	148	2.44%	\$ 3,137,413	2.03%
> 4% up to and including 6%	1,158	19.05%	\$ 33,292,976	21.51%
> 6% up to and including 8%	4,042	66.50%	\$ 98,563,231	63.68%
> 8% up to and including 10%	616	10.13%	\$ 15,897,272	10.27%
> 10% up to and including 12%	86	1.41%	\$ 2,227,735	1.44%
> 12% up to and including 14%	25	0.41%	\$ 1,563,024	1.01%
> 14% up to and including 16%	3	0.05%	\$ 99,101	0.06%
> 16% up to and including 18%	0	0.00%	\$ -	0.00%
> 18% up to and including 20%	0	0.00%	\$ -	0.00%
> 20%	0	0.00%	\$ -	0.00%
Total	6,078	100.00%	\$ 154,780,752	100.00%

