



FP Turbo Series 2016-1 Trust as at 31 August 2018

Portfolio Summary	
Portfolio size	\$ 147,188,123.89
Number of contracts	5,805
Number of obligors	766
Weighted average yield (p.a.)	10.71%
Average contract balance (current)	\$ 25,355.40
Maximum contract balance (current)	\$ 205,220.24
Average contract balance (original)	\$ 46,368.57
Maximum contract balance (original)	\$ 487,571.03
Weighted average total contract term (months)	52.01
Weighted average seasoning (months)	36.65
Weighted average remaining term (months)	15.37
Maximum remaining term (months)	62.04
Weighted average residual (current)	61.58%
Weighted average residual (original)	33.69%
Weighted average balloon percentage	70.75%
Balloon payments contract balance	\$ 145,229,365.50
Balloon payments contract count	5,773
Balloon payments value	\$ 104,130,107.53
Maximum balloon payment	\$ 189,486.36
Maximum contract balance	\$ 205,220.24

Top 10 Obligor

Customer Code	Number of Contracts	(%) Number of Contracts	Receivables Outstanding	(%) Receivables Outstanding
AAN0481	448	7.72%	\$ 10,360,184	7.04%
ARO0130	84	1.45%	\$ 6,756,878	4.59%
AAG0025	239	4.12%	\$ 6,292,055	4.27%
ARI0248	329	5.67%	\$ 6,039,074	4.10%
AMU0167	117	2.02%	\$ 5,640,988	3.83%
ATE0041	273	4.70%	\$ 5,576,185	3.79%
ASP0122	29	0.50%	\$ 3,416,868	2.32%
ATS0013	150	2.58%	\$ 3,335,392	2.27%
ARA0071	53	0.91%	\$ 2,481,804	1.69%
AGI0035	76	1.31%	\$ 2,209,893	1.50%
Total	1,798	30.97%	\$ 52,109,322	35.40%

Top 10 Contract Balance

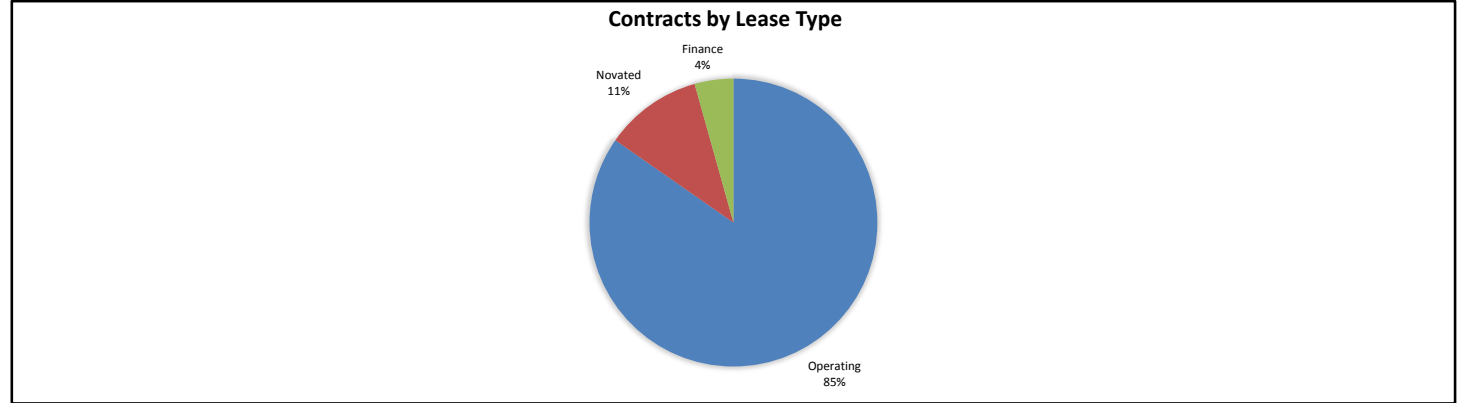
	Receivables Outstanding
1st Decile Upper Limit	\$ 205,220
2nd Decile Upper Limit	\$ 205,040
3rd Decile Upper Limit	\$ 203,110
4th Decile Upper Limit	\$ 202,711
5th Decile Upper Limit	\$ 202,011
6th Decile Upper Limit	\$ 201,477
7th Decile Upper Limit	\$ 200,825
8th Decile Upper Limit	\$ 199,800
9th Decile Upper Limit	\$ 195,539
10th Decile Upper Limit	\$ 195,133

Top 10 Contract Aggregate Balance

	Receivables Outstanding
Aggregate Balance- 1st Decile	\$ 595,578
Aggregate Balance- 2nd Decile	\$ 397,800
Aggregate Balance- 3rd Decile	\$ 206,634
Aggregate Balance- 4th Decile	\$ 206,104
Aggregate Balance- 5th Decile	\$ 206,031
Aggregate Balance- 6th Decile	\$ 205,920
Aggregate Balance- 7th Decile	\$ 205,623
Aggregate Balance- 8th Decile	\$ 204,838
Aggregate Balance- 9th Decile	\$ 203,697
Aggregate Balance- 10th Decile	\$ 203,544
Total	\$ 2,635,768

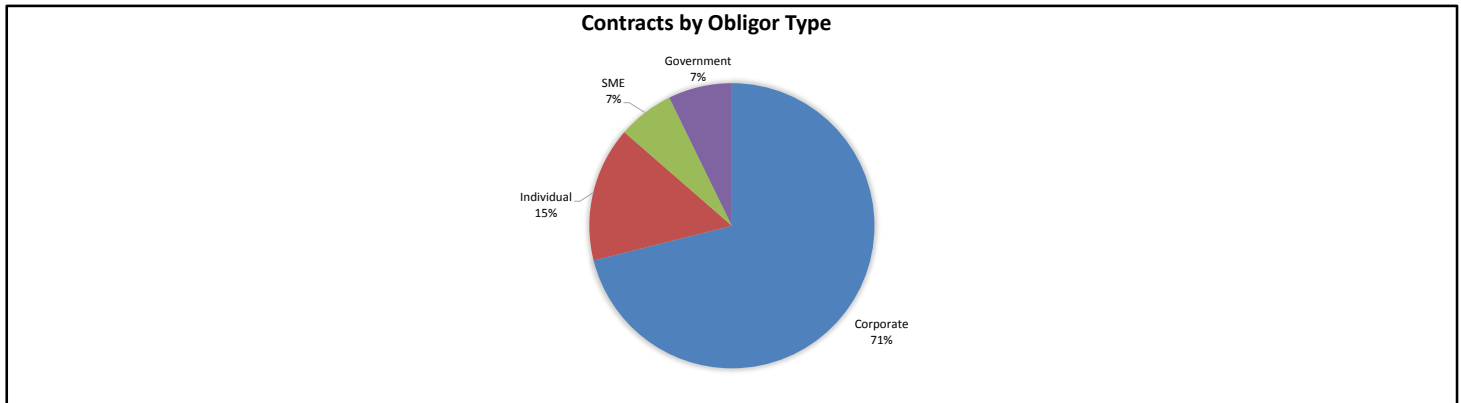
Contracts by Lease Type

Lease Type	Number of Contracts	(%) Number of Contracts	Receivables Outstanding	(%) Receivables Outstanding
Operating	4,934	85.00%	\$ 124,650,750	84.69%
Novated	598	10.30%	\$ 16,130,106	10.96%
Finance	273	4.70%	\$ 6,407,268	4.35%
Total	5,805	100.00%	\$ 147,188,124	100.00%



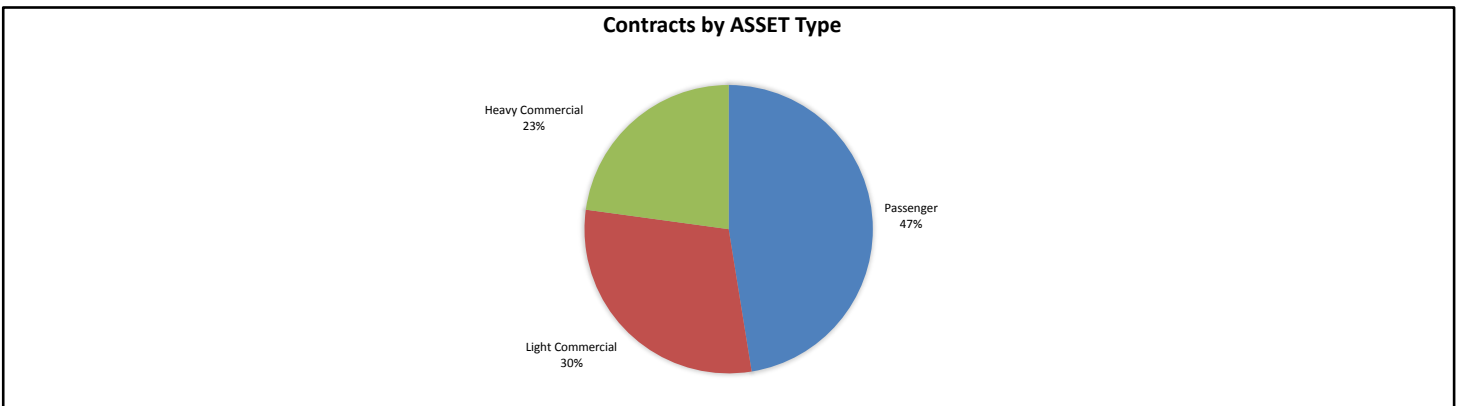
Contracts by Obligor Type

Obligor Type	Number of Contracts	(%) Number of Contracts	Receivables Outstanding	(%) Receivables Outstanding
Corporate	4,221	72.71%	\$ 104,630,131	71.09%
Individual	871	15.00%	\$ 22,537,373	15.31%
SME	505	8.70%	\$ 9,366,613	6.36%
Government	208	3.58%	\$ 10,654,007	7.24%
Total	5,805	100.00%	\$ 147,188,124	100.00%



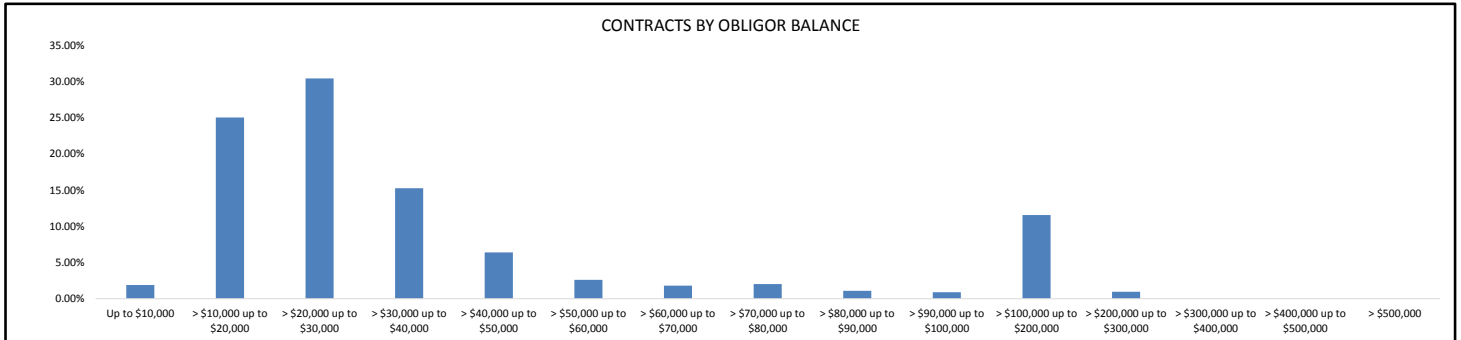
Contracts by Asset Type

Asset Type	Number of Contracts	(%) Number of Contracts	Receivables Outstanding	(%) Receivables Outstanding
Passenger	3,508	60.43%	\$ 69,841,254	47.45%
Light Commercial	1,801	31.02%	\$ 43,730,084	29.71%
Heavy Commercial	496	8.54%	\$ 33,616,786	22.84%
Total	5,805	100.00%	\$ 147,188,124	100.00%



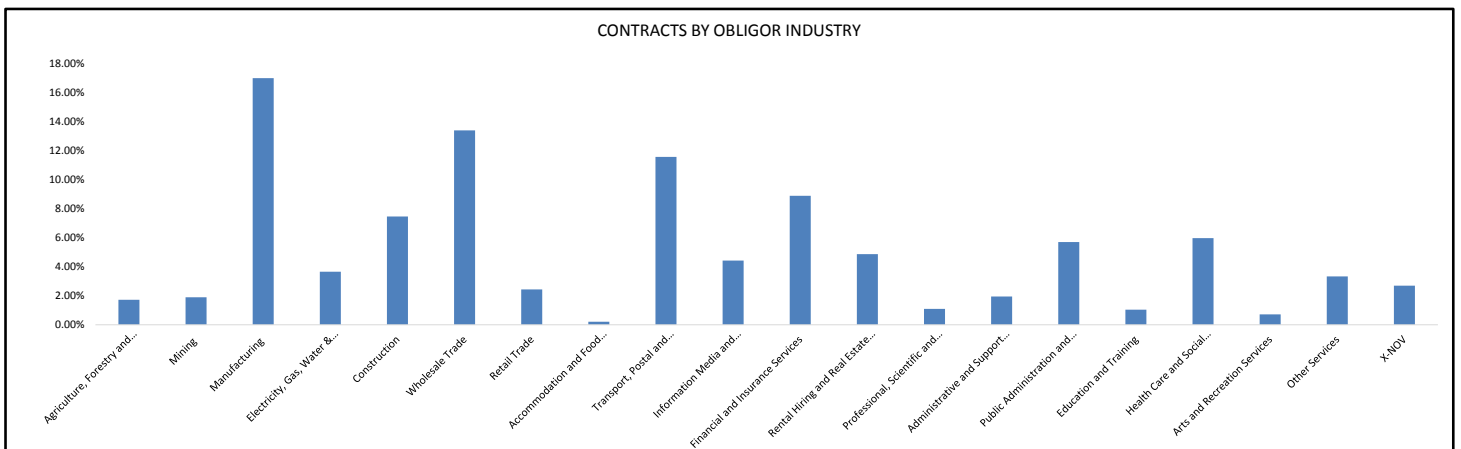
Contracts by Obligor Balance

Obligor Balance	Number of Contracts	(%) Number of Contracts	Receivables Outstanding	(%) Receivables Outstanding
Up to \$10,000	385	6.63%	\$ 2,801,906	1.90%
> \$10,000 up to \$20,000	2,421	41.71%	\$ 36,848,861	25.04%
> \$20,000 up to \$30,000	1,818	31.32%	\$ 44,805,152	30.44%
> \$30,000 up to \$40,000	654	11.27%	\$ 22,464,999	15.26%
> \$40,000 up to \$50,000	216	3.72%	\$ 9,414,334	6.40%
> \$50,000 up to \$60,000	70	1.21%	\$ 3,848,628	2.61%
> \$60,000 up to \$70,000	41	0.71%	\$ 2,656,741	1.80%
> \$70,000 up to \$80,000	40	0.69%	\$ 2,983,922	2.03%
> \$80,000 up to \$90,000	19	0.33%	\$ 1,602,778	1.09%
> \$90,000 up to \$100,000	14	0.24%	\$ 1,330,628	0.90%
> \$100,000 up to \$200,000	120	2.07%	\$ 17,009,781	11.56%
> \$200,000 up to \$300,000	7	0.12%	\$ 1,420,394	0.97%
> \$300,000 up to \$400,000	0	0.00%	\$ -	0.00%
> \$400,000 up to \$500,000	0	0.00%	\$ -	0.00%
> \$500,000	0	0.00%	\$ -	0.00%
Total	5,805	100.00%	\$ 147,188,124	100.00%



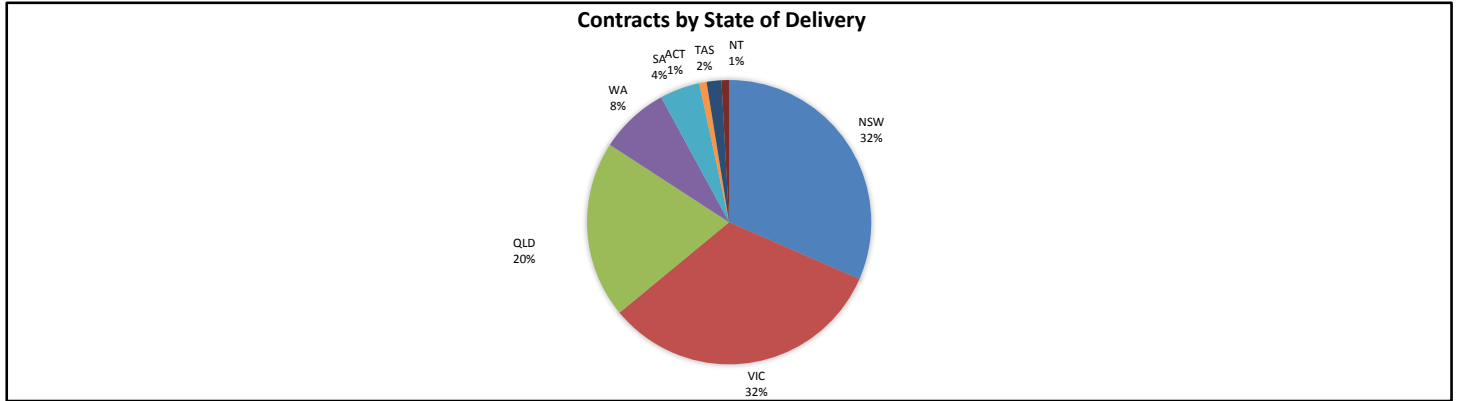
Contracts by Obligor Industry

Obligor Industry	Number of Contracts	(%) Number of Contracts	Receivables Outstanding	(%) Receivables Outstanding
ANZSIC Industry Division: Agriculture, Forestry and Fishing	101	1.74%	\$ 2,530,597	1.72%
ANZSIC Industry Division: Mining	97	1.67%	\$ 2,784,874	1.89%
ANZSIC Industry Division: Manufacturing	932	16.06%	\$ 25,009,496	16.99%
ANZSIC Industry Division: Electricity, Gas, Water and Waste Services	242	4.17%	\$ 5,386,371	3.66%
ANZSIC Industry Division: Construction	446	7.68%	\$ 10,977,572	7.46%
ANZSIC Industry Division: Wholesale Trade	820	14.13%	\$ 19,707,123	13.39%
ANZSIC Industry Division: Retail Trade	170	2.93%	\$ 3,585,931	2.44%
ANZSIC Industry Division: Accommodation and Food Services	16	0.28%	\$ 313,603	0.21%
ANZSIC Industry Division: Transport, Postal and Warehousing	328	5.65%	\$ 17,022,496	11.57%
ANZSIC Industry Division: Information Media and Telecommunications	308	5.31%	\$ 6,504,777	4.42%
ANZSIC Industry Division: Financial and Insurance Services	570	9.82%	\$ 13,074,687	8.88%
ANZSIC Industry Division: Rental, Hiring and Real Estate Services	388	6.68%	\$ 7,168,754	4.87%
ANZSIC Industry Division: Professional, Scientific and Technical Services	67	1.15%	\$ 1,614,198	1.10%
ANZSIC Industry Division: Administrative and Support Services	134	2.31%	\$ 2,865,682	1.95%
ANZSIC Industry Division: Public Administration and Safety	169	2.91%	\$ 8,388,007	5.70%
ANZSIC Industry Division: Education and Training	65	1.12%	\$ 1,534,953	1.04%
ANZSIC Industry Division: Health Care and Social Assistance	530	9.13%	\$ 8,791,423	5.97%
ANZSIC Industry Division: Arts and Recreational Services	59	1.02%	\$ 1,045,908	0.71%
Other Services	201	3.46%	\$ 4,909,219	3.34%
X-NOV	162	2.79%	\$ 3,972,454	2.70%
Total	5,805	100.00%	\$ 147,188,124	100.00%



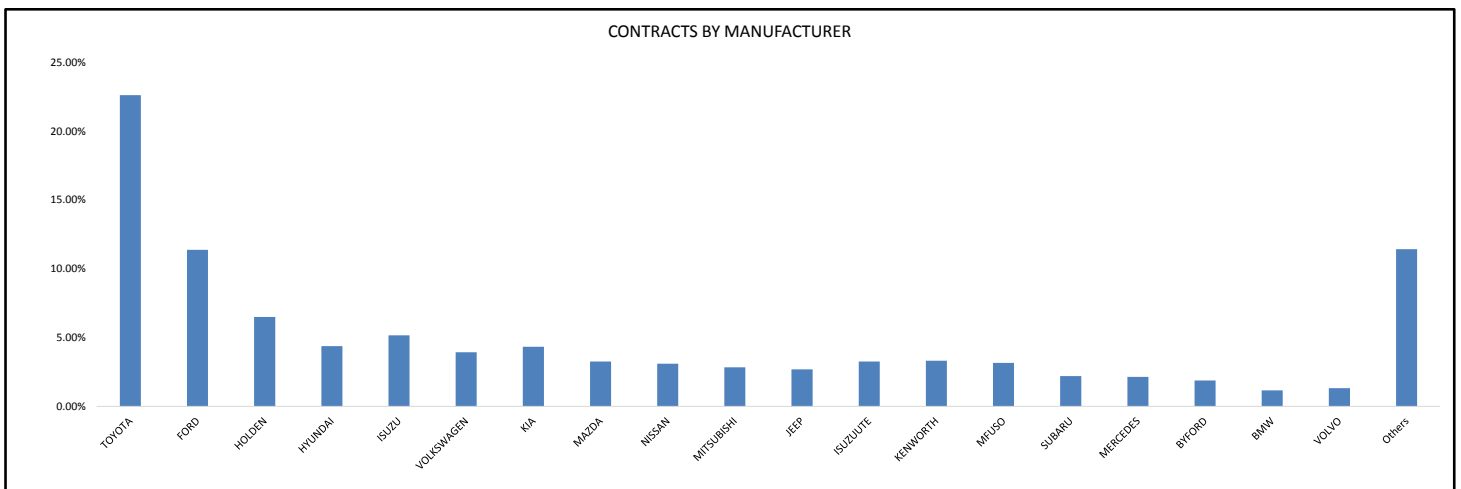
Contracts by State of Delivery

State of Delivery	Number of Contracts	(%) Number of Contracts	Receivables Outstanding	(%) Receivables Outstanding
NSW	1,679	28.92%	\$ 46,450,731	31.56%
VIC	1,895	32.64%	\$ 47,774,941	32.46%
QLD	1,201	20.69%	\$ 29,652,203	20.15%
WA	526	9.06%	\$ 11,631,398	7.90%
SA	297	5.12%	\$ 6,695,160	4.55%
ACT	50	0.86%	\$ 1,239,448	0.84%
TAS	108	1.86%	\$ 2,468,355	1.68%
NT	49	0.84%	\$ 1,275,886	0.87%
Total	5,805	100.00%	\$ 147,188,124	100.00%



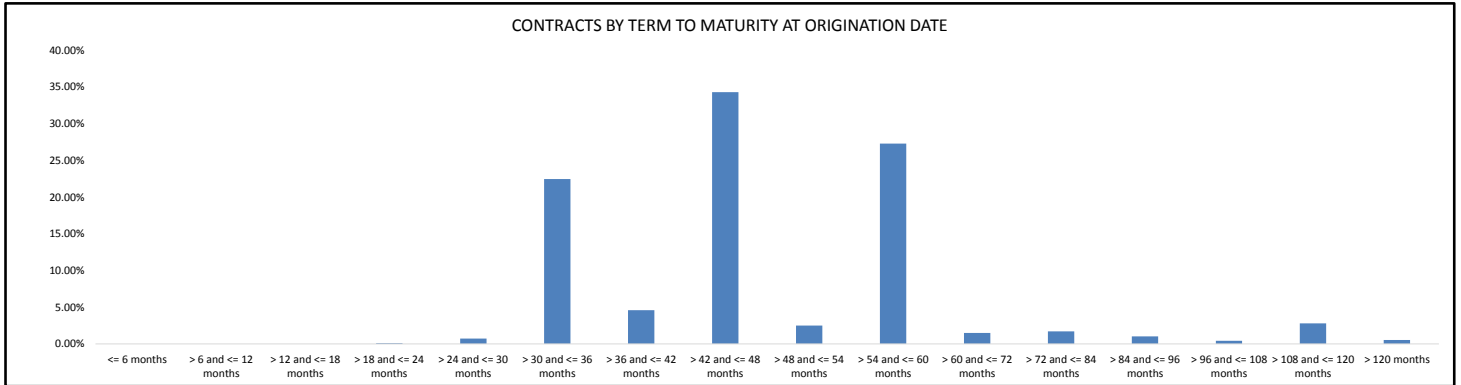
Contracts by Manufacturer

Manufacturer	Number of Contracts	(%) Number of Contracts	Receivables Outstanding	(%) Receivables Outstanding
TOYOTA	1,449	24.96%	\$ 33,280,646	22.61%
FORD	773	13.32%	\$ 16,739,083	11.37%
HOLDEN	519	8.94%	\$ 9,550,339	6.49%
HYUNDAI	389	6.70%	\$ 6,442,657	4.38%
ISUZU	130	2.24%	\$ 7,593,409	5.16%
VOLKSWAGEN	283	4.88%	\$ 5,783,162	3.93%
KIA	351	6.05%	\$ 6,372,117	4.33%
MAZDA	242	4.17%	\$ 4,800,816	3.26%
NISSAN	245	4.22%	\$ 4,562,350	3.10%
MITSUBISHI	211	3.63%	\$ 4,173,783	2.84%
JEEP	163	2.81%	\$ 3,958,951	2.69%
ISUZUUTE	187	3.22%	\$ 4,801,975	3.26%
KENWORTH	29	0.50%	\$ 4,887,789	3.32%
MFUSO	89	1.53%	\$ 4,648,038	3.16%
SUBARU	152	2.62%	\$ 3,233,089	2.20%
MERCEDES	73	1.26%	\$ 3,143,734	2.14%
BYFORD	21	0.36%	\$ 2,772,184	1.88%
BMW	42	0.72%	\$ 1,705,668	1.16%
VOLVO	25	0.43%	\$ 1,942,495	1.32%
Others	432	7.44%	\$ 16,795,840	11.41%
Total	5,805	100.00%	\$ 147,188,124	100.00%



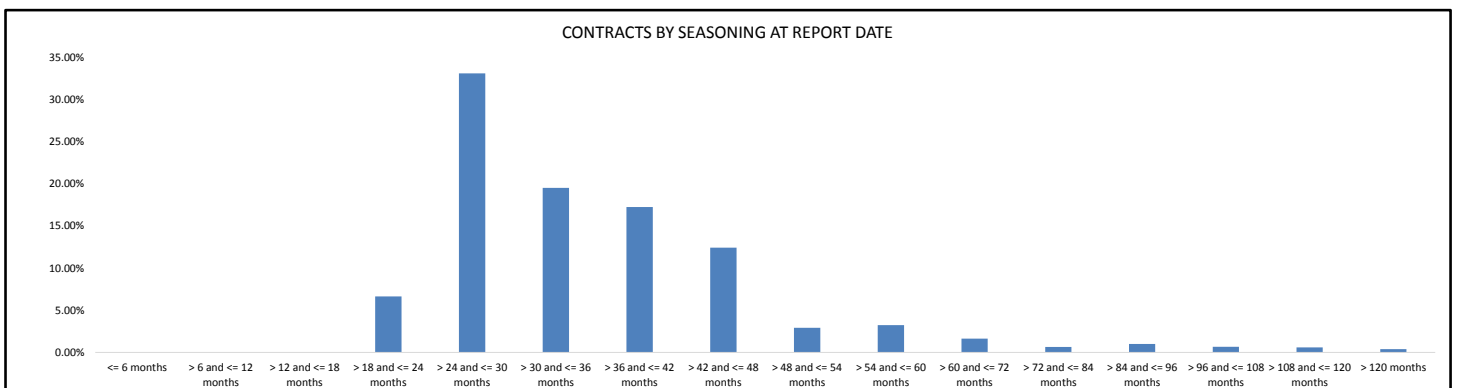
Contracts by Term to Maturity at Origination Date

Term to Maturity at Origination Date	Number of Contracts	(%) Number of Contracts	Receivables Outstanding	(%) Receivables Outstanding
<= 6 months	0	0.00%	\$ -	0.00%
> 6 and <= 12 months	0	0.00%	\$ -	0.00%
> 12 and <= 18 months	0	0.00%	\$ -	0.00%
> 18 and <= 24 months	18	0.31%	\$ 151,758	0.10%
> 24 and <= 30 months	64	1.10%	\$ 1,068,369	0.73%
> 30 and <= 36 months	1,562	26.91%	\$ 33,073,571	22.47%
> 36 and <= 42 months	381	6.56%	\$ 6,775,727	4.60%
> 42 and <= 48 months	2,181	37.57%	\$ 50,501,022	34.31%
> 48 and <= 54 months	242	4.17%	\$ 3,677,914	2.50%
> 54 and <= 60 months	1,117	19.24%	\$ 40,175,367	27.30%
> 60 and <= 72 months	74	1.27%	\$ 2,207,599	1.50%
> 72 and <= 84 months	53	0.91%	\$ 2,508,342	1.70%
> 84 and <= 96 months	34	0.59%	\$ 1,499,094	1.02%
> 96 and <= 108 months	14	0.24%	\$ 643,421	0.44%
> 108 and <= 120 months	44	0.76%	\$ 4,114,446	2.80%
> 120 months	21	0.36%	\$ 791,493	0.54%
Total	5,805	100.00%	\$ 147,188,124	100.00%



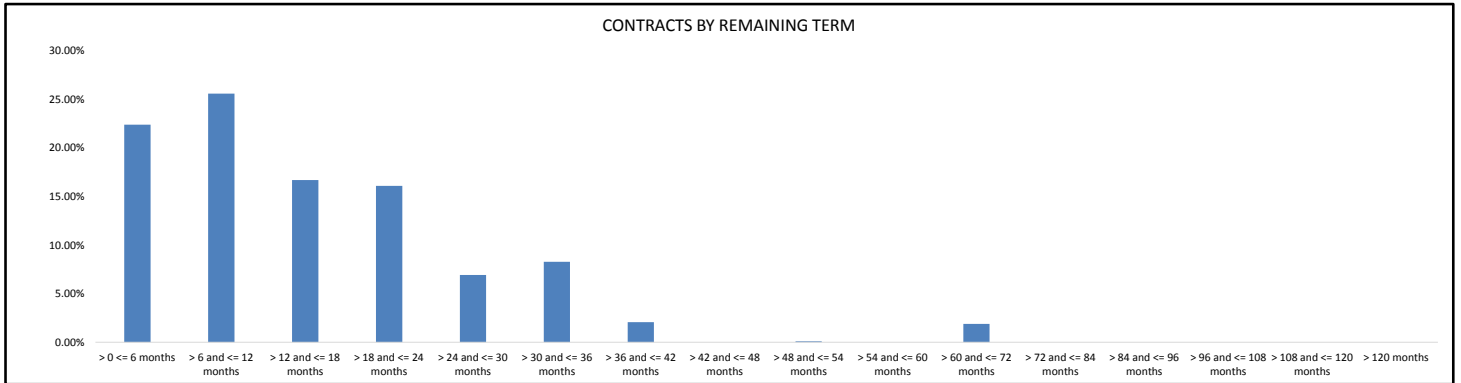
Contracts by Seasoning at Report Date

Seasoning at Report Date	Number of Contracts	(%) Number of Contracts	Receivables Outstanding	(%) Receivables Outstanding
<= 6 months	0	0.00%	\$ -	0.00%
> 6 and <= 12 months	0	0.00%	\$ -	0.00%
> 12 and <= 18 months	0	0.00%	\$ -	0.00%
> 18 and <= 24 months	315	5.43%	\$ 9,781,425	6.65%
> 24 and <= 30 months	1,771	30.51%	\$ 48,705,336	33.09%
> 30 and <= 36 months	1,255	21.62%	\$ 28,736,927	19.52%
> 36 and <= 42 months	1,119	19.28%	\$ 25,387,014	17.25%
> 42 and <= 48 months	812	13.99%	\$ 18,285,258	12.42%
> 48 and <= 54 months	250	4.31%	\$ 4,291,928	2.92%
> 54 and <= 60 months	92	1.58%	\$ 4,752,406	3.23%
> 60 and <= 72 months	72	1.24%	\$ 2,418,204	1.64%
> 72 and <= 84 months	31	0.53%	\$ 945,035	0.64%
> 84 and <= 96 months	35	0.60%	\$ 1,470,550	1.00%
> 96 and <= 108 months	19	0.33%	\$ 980,654	0.67%
> 108 and <= 120 months	18	0.31%	\$ 866,078	0.59%
> 120 months	16	0.28%	\$ 567,309	0.39%
Total	5,805	100.00%	\$ 147,188,124	100.00%



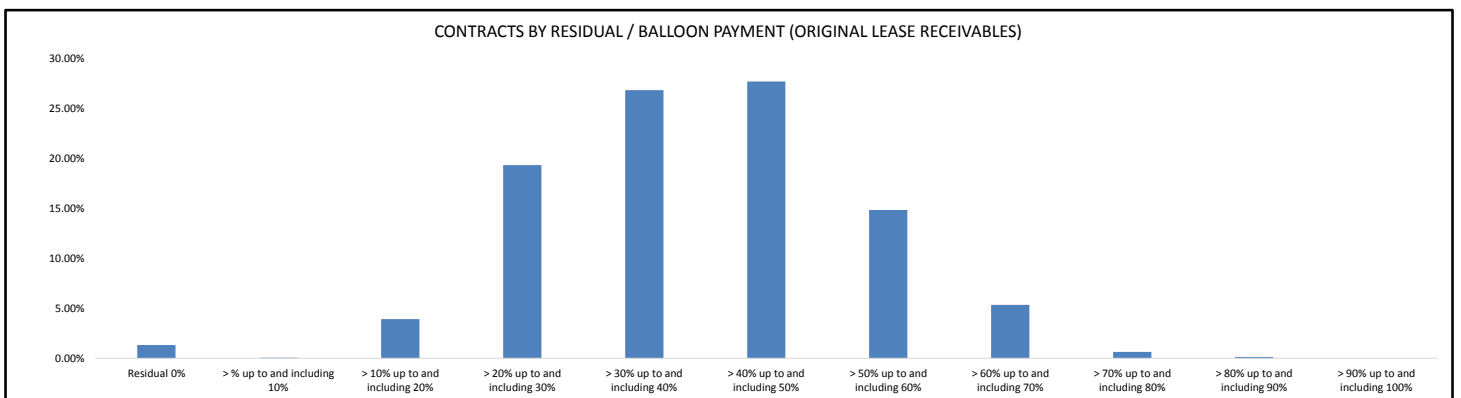
Contracts by Remaining Term

Remaining Term	Number of Contracts	(%) Number of Contracts	Receivables Outstanding	(%) Receivables Outstanding
> 0 <= 6 months	1,825	31.44%	\$ 32,943,182	22.38%
> 6 and <= 12 months	1,683	28.99%	\$ 37,652,689	25.58%
> 12 and <= 18 months	919	15.83%	\$ 24,566,186	16.69%
> 18 and <= 24 months	752	12.95%	\$ 23,691,807	16.10%
> 24 and <= 30 months	278	4.79%	\$ 10,194,963	6.93%
> 30 and <= 36 months	280	4.82%	\$ 12,184,469	8.28%
> 36 and <= 42 months	46	0.79%	\$ 3,033,451	2.06%
> 42 and <= 48 months	0	0.00%	\$ -	0.00%
> 48 and <= 54 months	1	0.02%	\$ 149,194	0.10%
> 54 and <= 60 months	0	0.00%	\$ -	0.00%
> 60 and <= 72 months	21	0.36%	\$ 2,772,184	1.88%
> 72 and <= 84 months	0	0.00%	\$ -	0.00%
> 84 and <= 96 months	0	0.00%	\$ -	0.00%
> 96 and <= 108 months	0	0.00%	\$ -	0.00%
> 108 and <= 120 months	0	0.00%	\$ -	0.00%
> 120 months	0	0.00%	\$ -	0.00%
Total	5,805	100.00%	\$ 147,188,124	100.00%



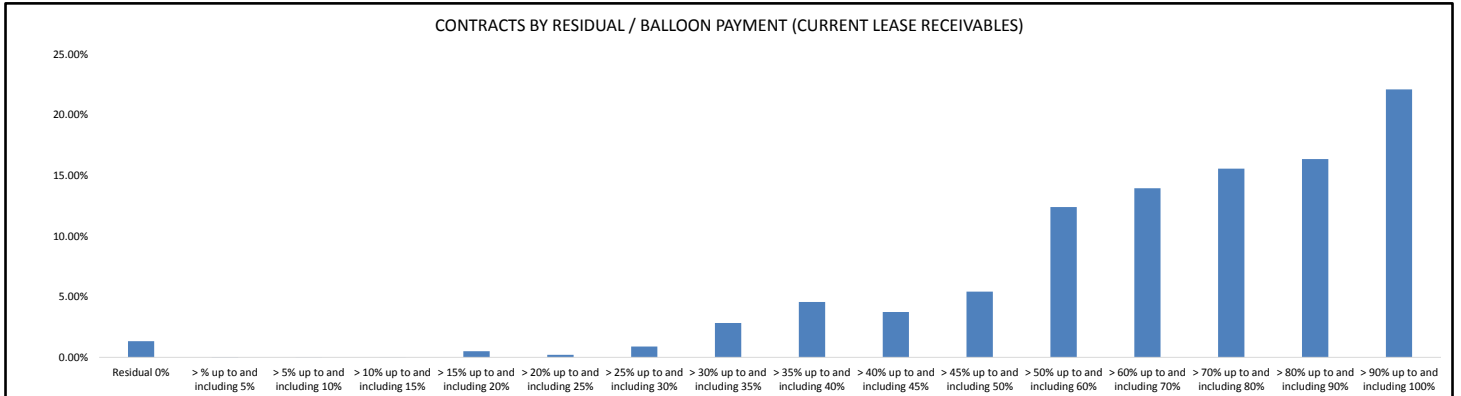
Contracts by Residual/Balloon Payment (Original Lease Receivables)

Residual/Balloon Payment (Original Lease Receivables)	Number of Contracts	(%) Number of Contracts	Receivables Outstanding	(%) Receivables Outstanding
Residual 0%	16	0.28%	\$ 1,958,758	1.33%
> % up to and including 10%	9	0.16%	\$ 73,991	0.05%
> 10% up to and including 20%	183	3.15%	\$ 5,754,657	3.91%
> 20% up to and including 30%	880	15.16%	\$ 28,418,037	19.31%
> 30% up to and including 40%	1,509	25.99%	\$ 39,462,005	26.81%
> 40% up to and including 50%	1,816	31.28%	\$ 40,723,270	27.67%
> 50% up to and including 60%	1,026	17.67%	\$ 21,813,787	14.82%
> 60% up to and including 70%	322	5.55%	\$ 7,848,410	5.33%
> 70% up to and including 80%	36	0.62%	\$ 939,512	0.64%
> 80% up to and including 90%	8	0.14%	\$ 195,697	0.13%
> 90% up to and including 100%	0	0.00%	\$ -	0.00%
Total	5,805	100.00%	\$ 147,188,124	100.00%



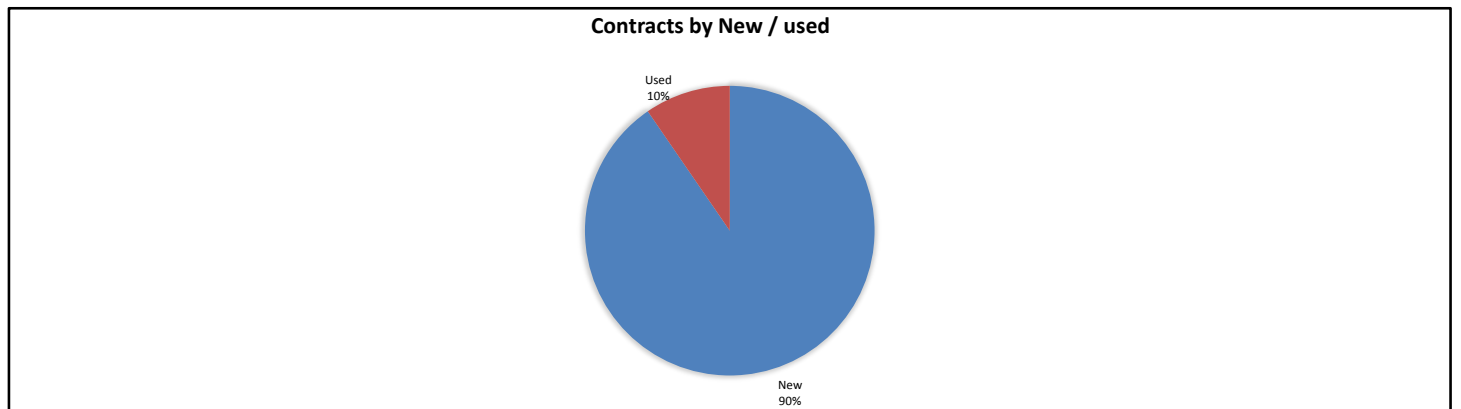
Contracts by Residual/Balloon Payment (Current Lease Receivables)

Residual/Balloon Payment (Current Lease Receivables)	Number of Contracts	(%) Number of Contracts	Receivables Outstanding	(%) Receivables Outstanding
Residual 0%	32	0.55%	\$ 1,958,758	1.33%
> % up to and including 5%	5	0.09%	\$ 50,352	0.03%
> 5% up to and including 10%	1	0.02%	\$ 5,315	0.00%
> 10% up to and including 15%	1	0.02%	\$ 19,414	0.01%
> 15% up to and including 20%	5	0.09%	\$ 744,682	0.51%
> 20% up to and including 25%	8	0.14%	\$ 300,839	0.20%
> 25% up to and including 30%	25	0.43%	\$ 1,314,054	0.89%
> 30% up to and including 35%	77	1.33%	\$ 4,186,038	2.84%
> 35% up to and including 40%	165	2.84%	\$ 6,728,016	4.57%
> 40% up to and including 45%	175	3.01%	\$ 5,508,386	3.74%
> 45% up to and including 50%	217	3.74%	\$ 7,980,531	5.42%
> 50% up to and including 60%	558	9.61%	\$ 18,267,791	12.41%
> 60% up to and including 70%	773	13.32%	\$ 20,550,140	13.96%
> 70% up to and including 80%	997	17.17%	\$ 22,932,325	15.58%
> 80% up to and including 90%	1,099	18.93%	\$ 24,089,824	16.37%
> 90% up to and including 100%	1,667	28.72%	\$ 32,551,659	22.12%
Total	5,805	100.00%	\$ 147,188,124	100.00%



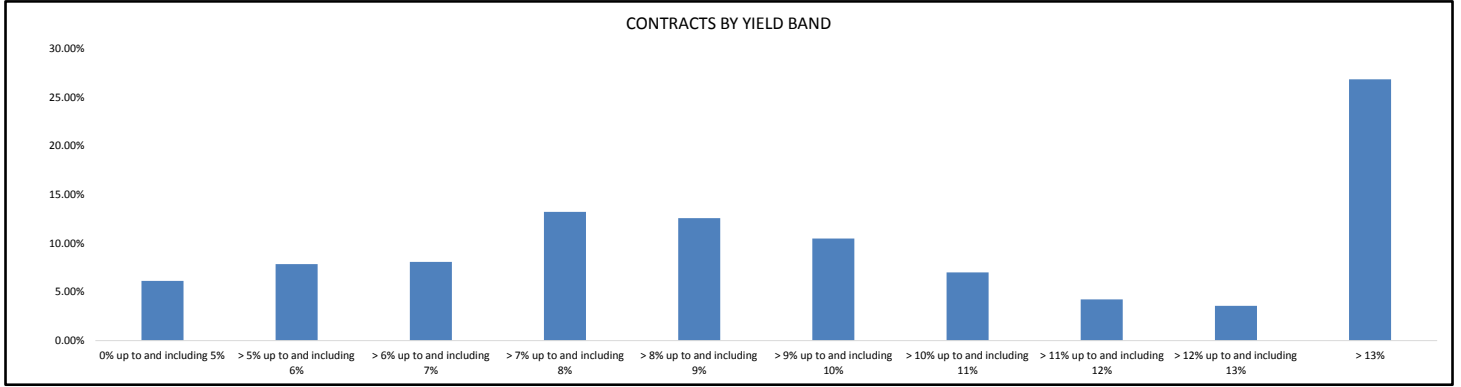
Contracts by New / Used

New / Used	Number of Contracts	(%) Number of Contracts	Receivables Outstanding	(%) Receivables Outstanding
New	5,392	92.89%	\$ 133,091,213	90.42%
Used	413	7.11%	\$ 14,096,911	9.58%
Total	5,805	100.00%	\$ 147,188,124	100.00%



Contracts by Yield Band

Yield Band	Number of Contracts	(%) Number of Contracts	Receivables Outstanding	(%) Receivables Outstanding
0% up to and including 5%	416	7.17%	\$ 9,035,482	6.14%
> 5% up to and including 6%	355	6.12%	\$ 11,562,681	7.86%
> 6% up to and including 7%	389	6.70%	\$ 11,898,081	8.08%
> 7% up to and including 8%	538	9.27%	\$ 19,456,966	13.22%
> 8% up to and including 9%	670	11.54%	\$ 18,521,071	12.58%
> 9% up to and including 10%	657	11.32%	\$ 15,423,207	10.48%
> 10% up to and including 11%	452	7.79%	\$ 10,316,436	7.01%
> 11% up to and including 12%	319	5.50%	\$ 6,233,385	4.23%
> 12% up to and including 13%	254	4.38%	\$ 5,253,743	3.57%
> 13%	1,755	30.23%	\$ 39,487,072	26.83%
Total	5,805	100.00%	\$ 147,188,124	100.00%



Contracts by Interest Rate

Interest Rate	Number of Contracts	(%) Number of Contracts	Receivables Outstanding	(%) Receivables Outstanding
0%	0	0.00%	\$ -	0.00%
> 0% up to and including 2%	0	0.00%	\$ -	0.00%
> 2% up to and including 4%	144	2.48%	\$ 2,987,960	2.03%
> 4% up to and including 6%	1,117	19.24%	\$ 31,904,482	21.68%
> 6% up to and including 8%	3,861	66.51%	\$ 93,926,631	63.81%
> 8% up to and including 10%	586	10.09%	\$ 15,025,179	10.21%
> 10% up to and including 12%	75	1.29%	\$ 2,041,722	1.39%
> 12% up to and including 14%	19	0.33%	\$ 1,204,881	0.82%
> 14% up to and including 16%	3	0.05%	\$ 97,269	0.07%
> 16% up to and including 18%	0	0.00%	\$ -	0.00%
> 18% up to and including 20%	0	0.00%	\$ -	0.00%
> 20%	0	0.00%	\$ -	0.00%
Total	5,805	100.00%	\$ 147,188,124	100.00%

