

**FP Turbo Series 2014-1 Trust
as at 31 August 2015**

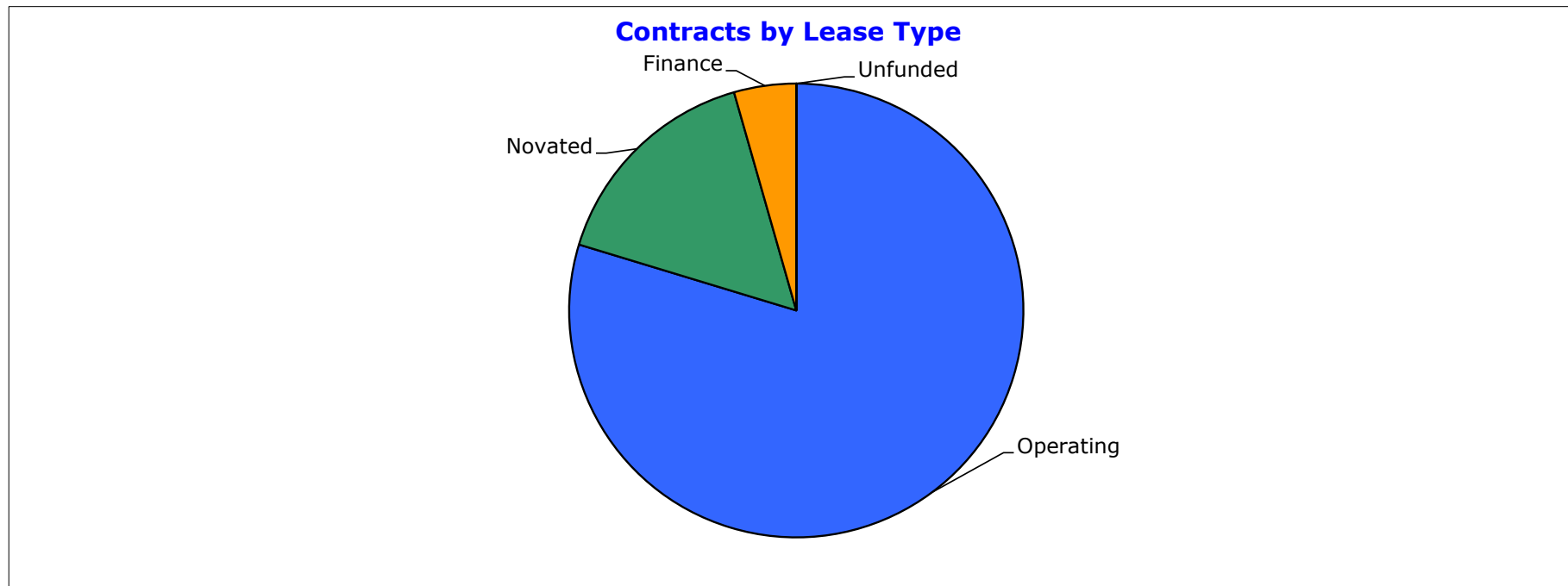
Portfolio Summary	
Portfolio size (\$)	\$161,238,615
Number of contracts	5,256
Number of obligors	815
Weighted average yield (% p.a.)	11.29%
Average contract balance (current) (\$)	\$30,677
Maximum contract balance (current) (\$)	\$315,936
Average contract balance (original) (\$)	\$51,192
Maximum contract balance (original) (\$)	\$463,230
Weighted average total contract term (months)	57.86
Weighted average seasoning (months)	32.56
Weighted average remaining term (months)	25.31
Maximum remaining term (months)	105.70
Average residual (current) (%)	44.01%
Average residual (original) (%)	26.37%

**FP Turbo Series 2014-1 Trust
as at 31 August 2015**

Top 10 Obligors			
Customer Code	Book Value	Number of Contracts	Percentage
AMU0167	\$ 15,160,799	101	9.40%
AAN0481	\$ 14,144,407	535	8.77%
AWE0162	\$ 8,120,799	245	5.04%
ARO0130	\$ 7,005,562	77	4.34%
ABO0142	\$ 6,852,492	80	4.25%
AAG0025	\$ 6,557,127	259	4.07%
ARA0071	\$ 6,476,914	209	4.02%
ATH0085	\$ 3,715,192	98	2.30%
ACA0196	\$ 3,421,542	27	2.12%
AWO0096	\$ 3,399,631	56	2.11%
Total	\$74,854,463	1,687	46.42%

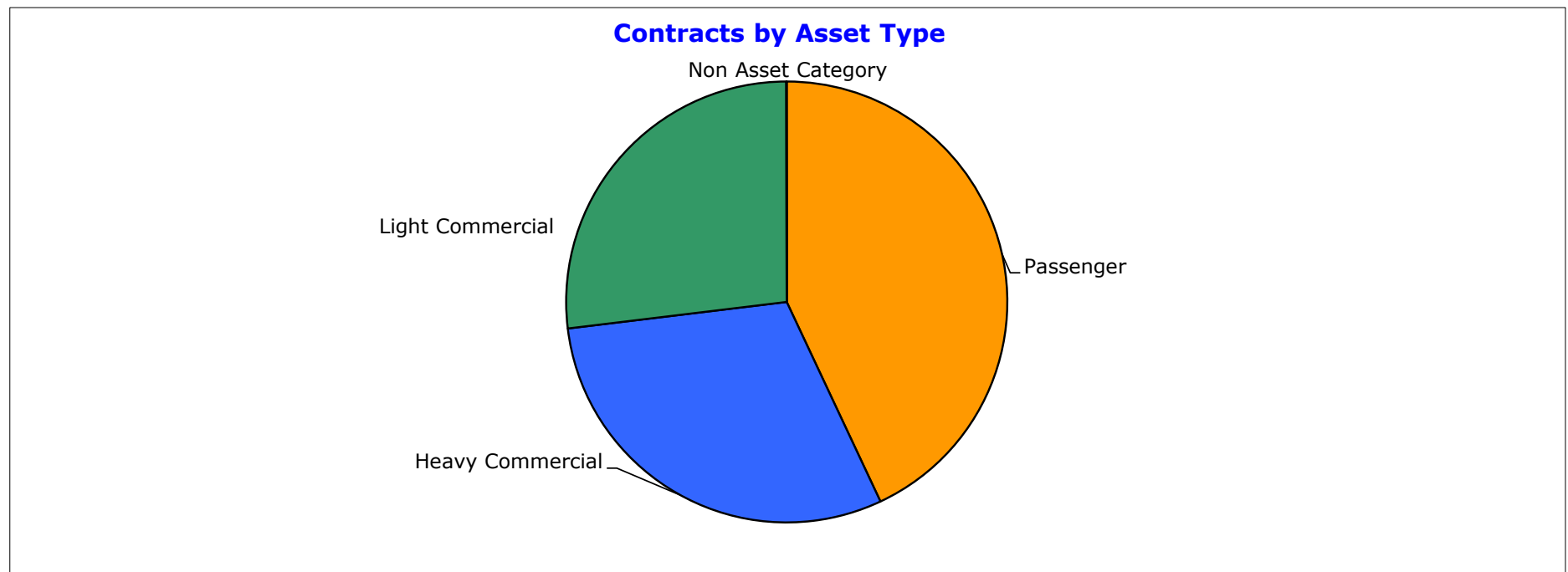
**FP Turbo Series 2014-1 Trust
as at 31 August 2015**

Contracts by Lease Type				
Lease Category	Current Lease Receivable (CLR) (\$)	CLR / Total Portfolio (%)	Contracts No.	Contracts No. / Total Portfolio (%)
Operating	128,489,625	79.69%	4,042	76.90%
Novated	25,621,870	15.89%	942	17.92%
Finance	7,127,119	4.42%	272	5.18%
Unfunded	-	0.00%	-	0.00%
Grand Total	161,238,615	100.00%	5,256	100.00%



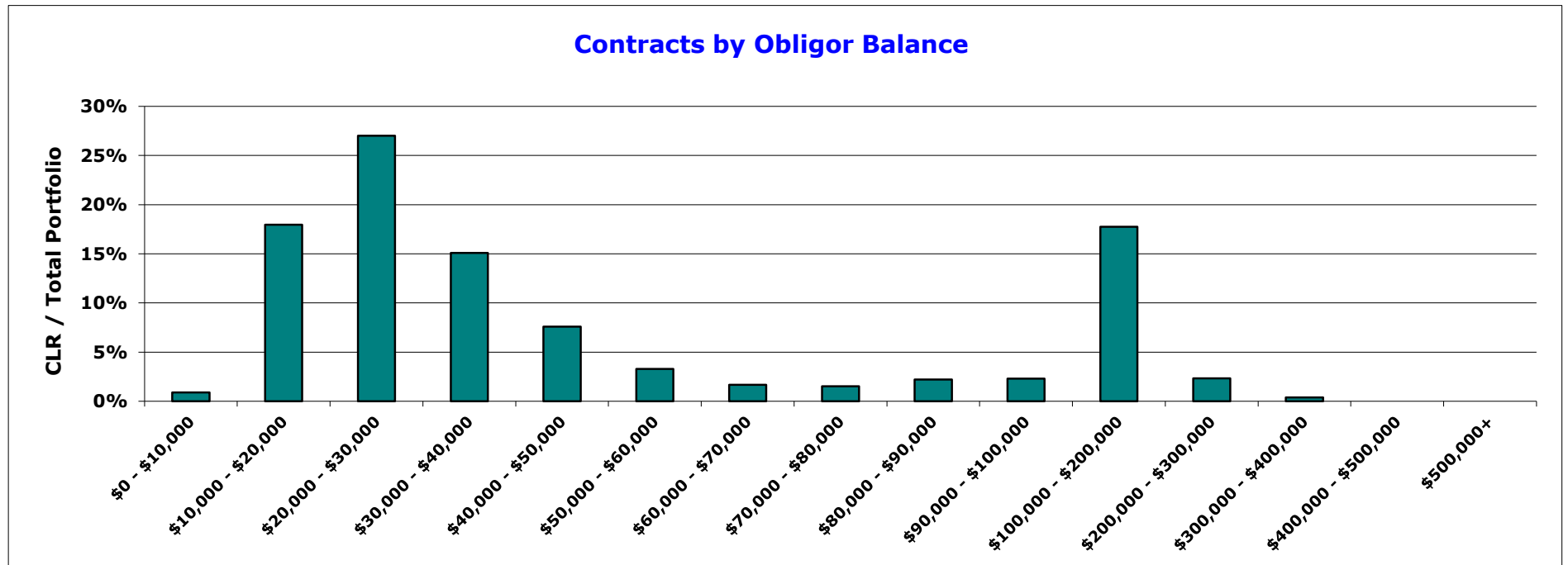
**FP Turbo Series 2014-1 Trust
as at 31 August 2015**

Contracts by Asset Type				
Asset Type	Current Lease Receivable (CLR) (\$)	CLR / Total Portfolio (%)	Contracts No.	Contracts No. / Total Portfolio (%)
Passenger	69,352,555	43.01%	3,050	58.03%
Heavy Commercial	48,477,605	30.07%	497	9.46%
Light Commercial	43,360,499	26.89%	1,708	32.50%
Non Asset Category	47,956	0.03%	1	0.02%
Grand Total	161,238,615	100.00%	5,256	100.00%



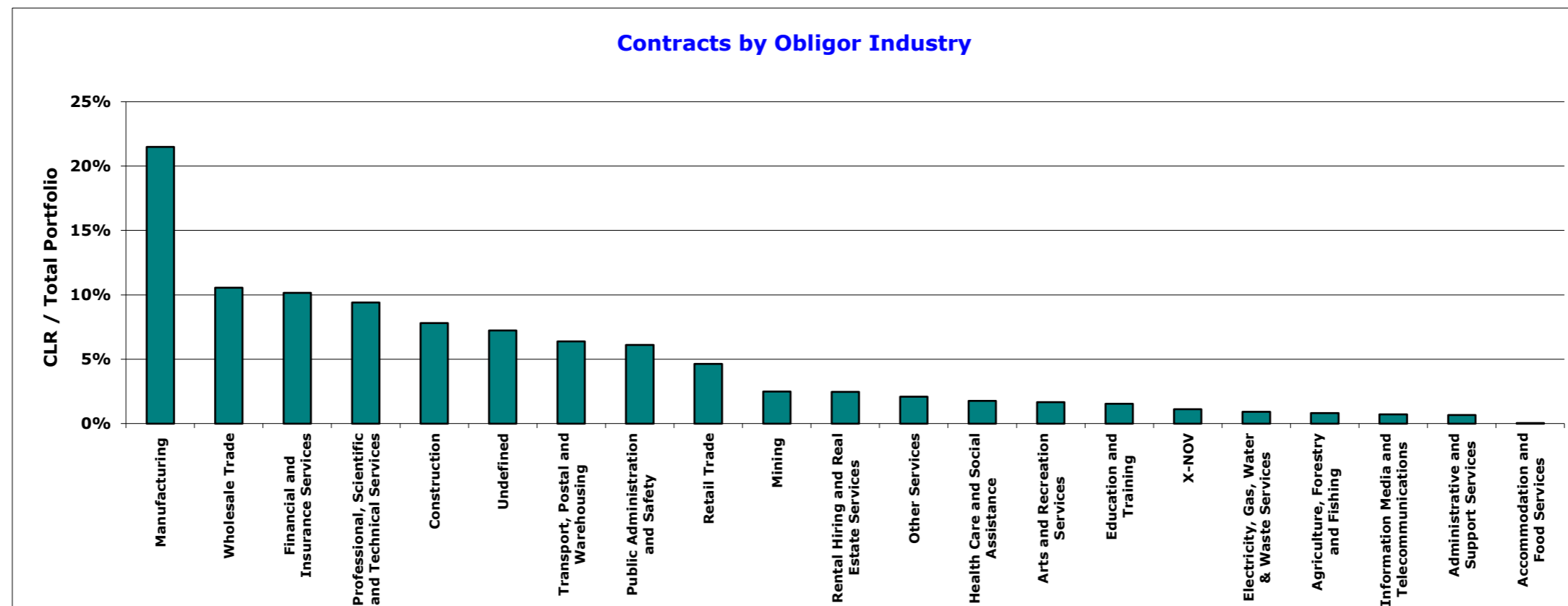
**FP Turbo Series 2014-1 Trust
as at 31 August 2015**

Contracts by Obligor Balance					
Obligor Balance	Current Lease Receivable (CLR) (\$)	CLR / Total Portfolio (%)	Contracts No.	Contracts No. / Total Portfolio (%)	
\$0 - \$10,000	1,452,728	0.90%	172	3.27%	
\$10,000 - \$20,000	28,934,776	17.95%	1,832	34.86%	
\$20,000 - \$30,000	43,564,573	27.02%	1,787	34.00%	
\$30,000 - \$40,000	24,339,054	15.10%	718	13.66%	
\$40,000 - \$50,000	12,225,666	7.58%	278	5.29%	
\$50,000 - \$60,000	5,295,916	3.28%	98	1.86%	
\$60,000 - \$70,000	2,684,420	1.66%	42	0.80%	
\$70,000 - \$80,000	2,456,597	1.52%	33	0.63%	
\$80,000 - \$90,000	3,563,172	2.21%	42	0.80%	
\$90,000 - \$100,000	3,690,747	2.29%	39	0.74%	
\$100,000 - \$200,000	28,640,679	17.76%	197	3.75%	
\$200,000 - \$300,000	3,759,439	2.33%	16	0.30%	
\$300,000 - \$400,000	630,848	0.39%	2	0.04%	
\$400,000 - \$500,000	-	0.00%	-	0.00%	
\$500,000+	-	0.00%	-	0.00%	
Grand Total	161,238,615	100.00%	5,256	100.00%	



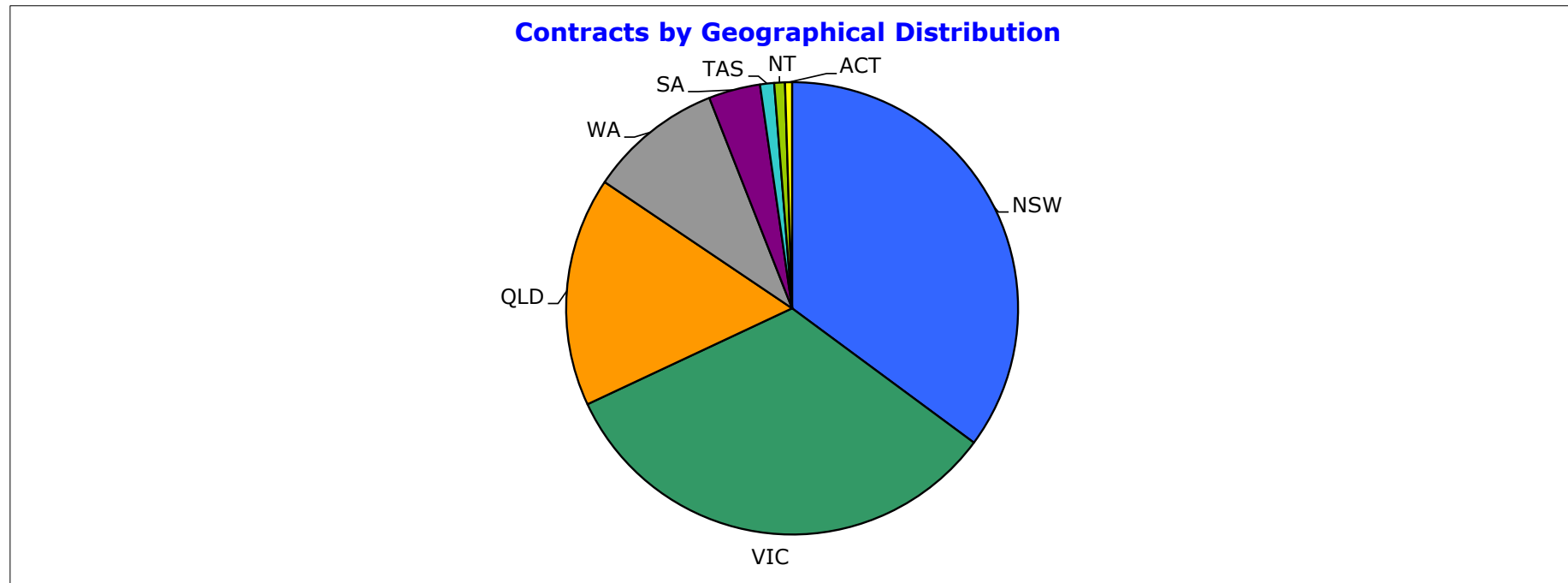
**FP Turbo Series 2014-1 Trust
as at 31 August 2015**

Contracts by Obligor Industry					
Industry Sector	Current Lease Receivable (CLR) (\$)	CLR / Total Portfolio (%)	Contracts No.	Contracts No. / Total Portfolio (%)	
Manufacturing	34,665,489	21.50%	891	16.95%	
Wholesale Trade	17,019,712	10.56%	664	12.63%	
Financial and Insurance Services	16,363,240	10.15%	622	11.83%	
Professional, Scientific and Technical Services	15,145,021	9.39%	475	9.04%	
Construction	12,590,304	7.81%	338	6.43%	
Undefined	11,646,896	7.22%	459	8.73%	
Transport, Postal and Warehousing	10,292,783	6.38%	316	6.01%	
Public Administration and Safety	9,854,478	6.11%	185	3.52%	
Retail Trade	7,470,641	4.63%	168	3.20%	
Mining	3,993,554	2.48%	150	2.85%	
Rental Hiring and Real Estate Services	3,956,406	2.45%	150	2.85%	
Other Services	3,366,896	2.09%	136	2.59%	
Health Care and Social Assistance	2,858,519	1.77%	151	2.87%	
Arts and Recreation Services	2,694,608	1.67%	134	2.55%	
Education and Training	2,461,074	1.53%	110	2.09%	
X-NOV	1,776,756	1.10%	82	1.56%	
Electricity, Gas, Water & Waste Services	1,468,016	0.91%	67	1.27%	
Agriculture, Forestry and Fishing	1,327,127	0.82%	57	1.08%	
Information Media and Telecommunications	1,159,425	0.72%	43	0.82%	
Administrative and Support Services	1,083,786	0.67%	55	1.05%	
Accommodation and Food Services	43,884	0.03%	3	0.06%	
Grand Total	161,238,615	100.00%	5,256	100.00%	



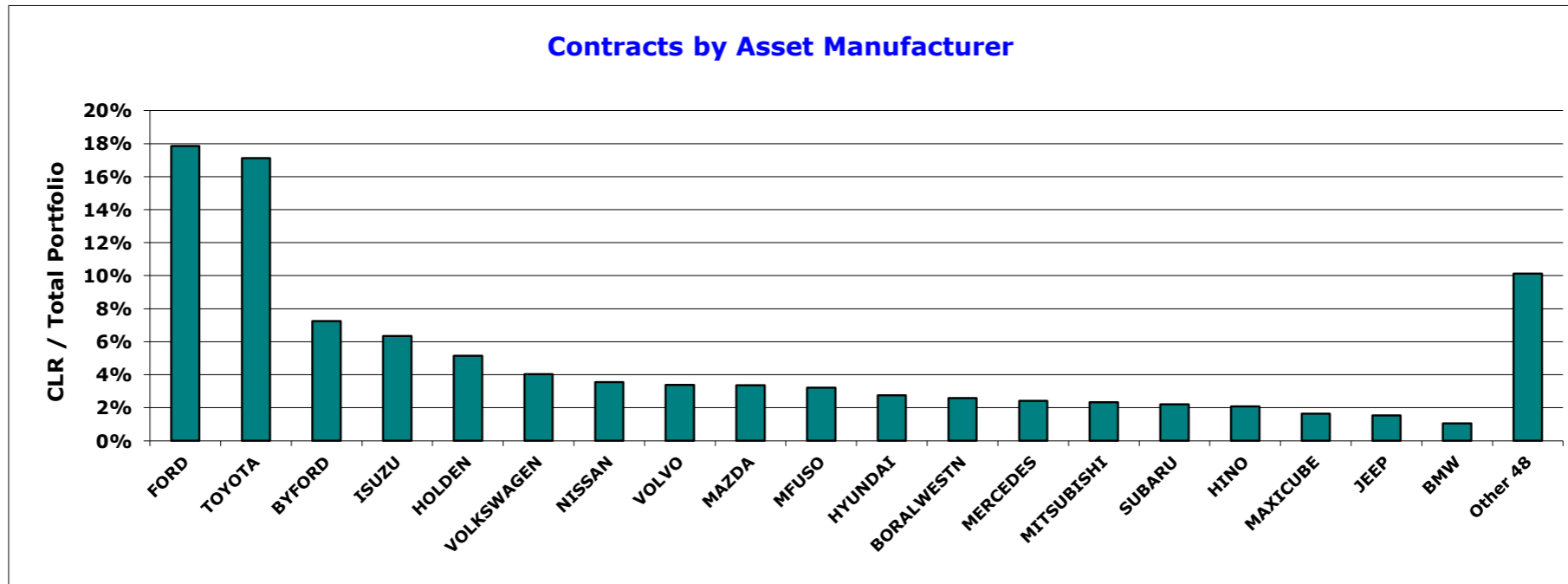
**FP Turbo Series 2014-1 Trust
as at 31 August 2015**

Contracts by Geographical Distribution					
State of Delivery	Current Lease Receivable (CLR) (\$)	CLR / Total Portfolio (%)	Contracts No.	Contracts No. / Total Portfolio (%)	
NSW	56,628,256	35.12%	1,810	34.44%	
VIC	53,057,472	32.91%	1,499	28.52%	
QLD	26,447,783	16.40%	965	18.36%	
WA	15,481,346	9.60%	615	11.70%	
SA	5,959,280	3.70%	221	4.20%	
TAS	1,620,112	1.00%	65	1.24%	
NT	1,235,375	0.77%	43	0.82%	
ACT	808,992	0.50%	38	0.72%	
Grand Total	161,238,615	100.00%	5,256	100.00%	



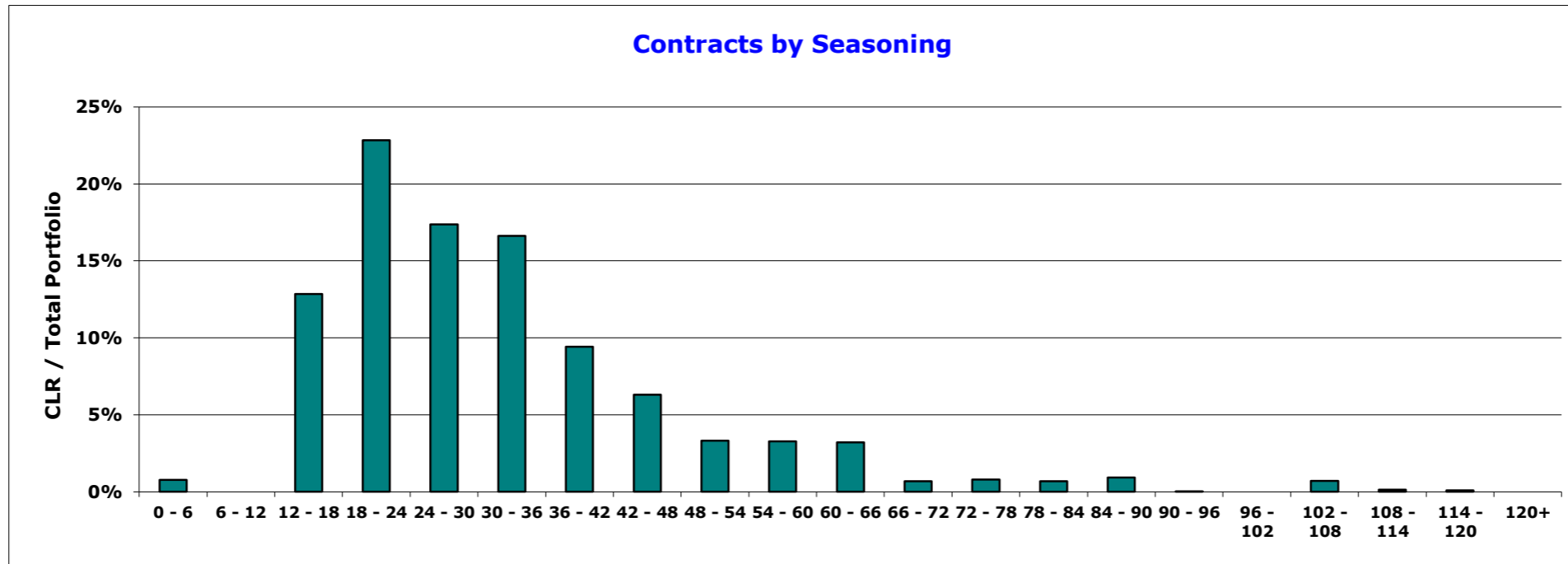
**FP Turbo Series 2014-1 Trust
as at 31 August 2015**

Contracts by Asset Manufacturer					
Manufacturer	Current Lease Receivable (CLR) (\$)	CLR / Total Portfolio (%)	Contracts No.	Contracts No. / Total Portfolio (%)	
FORD	28,791,080	17.86%	1,329	25.29%	
TOYOTA	27,589,451	17.11%	1,131	21.52%	
BYFORD	11,671,427	7.24%	80	1.52%	
ISUZU	10,226,778	6.34%	118	2.25%	
HOLDEN	8,316,306	5.16%	391	7.44%	
VOLKSWAGEN	6,509,239	4.04%	262	4.98%	
NISSAN	5,734,354	3.56%	221	4.20%	
VOLVO	5,445,076	3.38%	50	0.95%	
MAZDA	5,430,293	3.37%	235	4.47%	
MFUSO	5,183,219	3.21%	64	1.22%	
HYUNDAI	4,448,282	2.76%	244	4.64%	
BORALWESTN	4,173,211	2.59%	30	0.57%	
MERCEDES	3,909,866	2.42%	109	2.07%	
MITSUBISHI	3,770,562	2.34%	197	3.75%	
SUBARU	3,546,447	2.20%	151	2.87%	
HINO	3,340,209	2.07%	36	0.68%	
MAXICUBE	2,640,620	1.64%	41	0.78%	
JEEP	2,483,740	1.54%	81	1.54%	
BMW	1,711,596	1.06%	44	0.84%	
Other 48	16,316,857	10.12%	442	8.41%	
Grand Total	161,238,615	100.00%	5,256	100.00%	



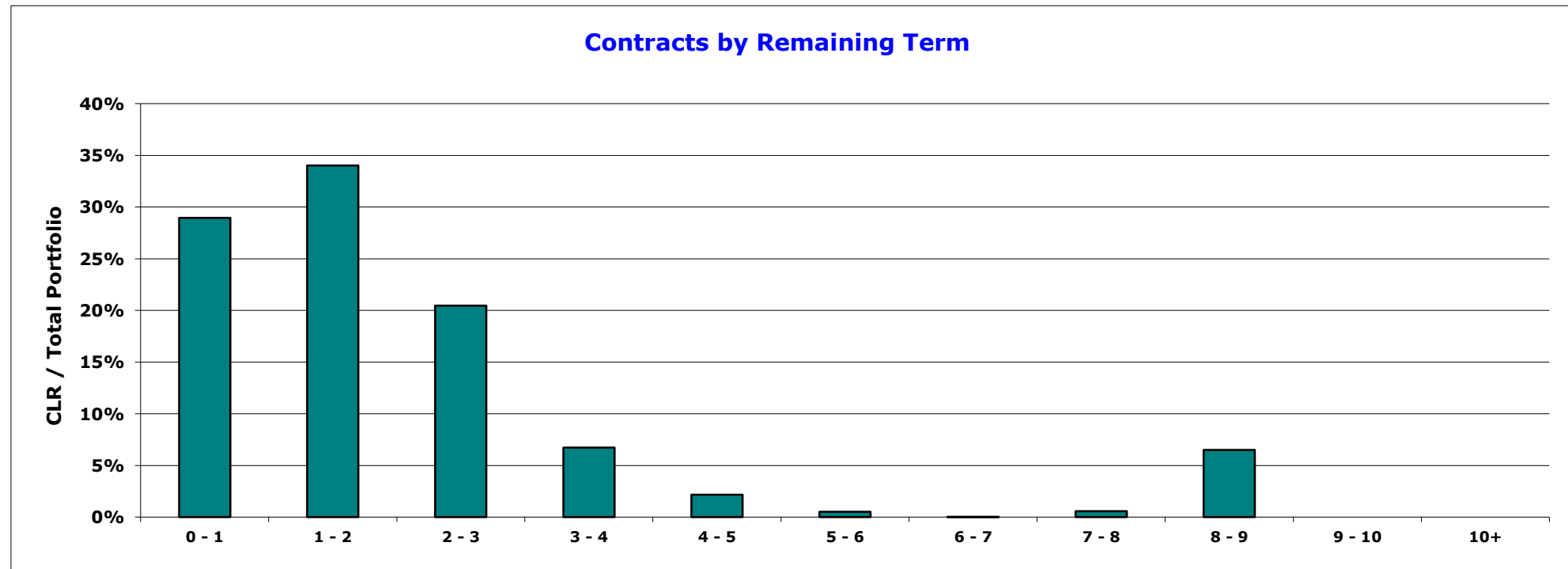
**FP Turbo Series 2014-1 Trust
as at 31 August 2015**

Contracts by Seasoning					
Seasoning Band Mths	Current Lease Receivable (CLR) (\$)	CLR / Total Portfolio (%)	Contracts No.	Contracts No. / Total Portfolio (%)	
0 - 6	1,240,208	0.77%	38	0.72%	
6 - 12	-	0.00%	-	0.00%	
12 - 18	20,709,567	12.84%	577	10.98%	
18 - 24	36,818,269	22.83%	947	18.02%	
24 - 30	28,003,298	17.37%	974	18.53%	
30 - 36	26,815,201	16.63%	1,057	20.11%	
36 - 42	15,186,084	9.42%	618	11.76%	
42 - 48	10,166,084	6.30%	507	9.65%	
48 - 54	5,339,225	3.31%	194	3.69%	
54 - 60	5,293,799	3.28%	182	3.46%	
60 - 66	5,187,664	3.22%	60	1.14%	
66 - 72	1,098,855	0.68%	16	0.30%	
72 - 78	1,285,793	0.80%	10	0.19%	
78 - 84	1,095,227	0.68%	16	0.30%	
84 - 90	1,495,231	0.93%	22	0.42%	
90 - 96	4,688	0.00%	1	0.02%	
96 - 102	-	0.00%	-	0.00%	
102 - 108	1,132,584	0.70%	26	0.49%	
108 - 114	217,608	0.13%	6	0.11%	
114 - 120	149,228	0.09%	5	0.10%	
120+	-	0.00%	-	0.00%	
Grand Total	161,238,615	100.00%	5,256	100.00%	



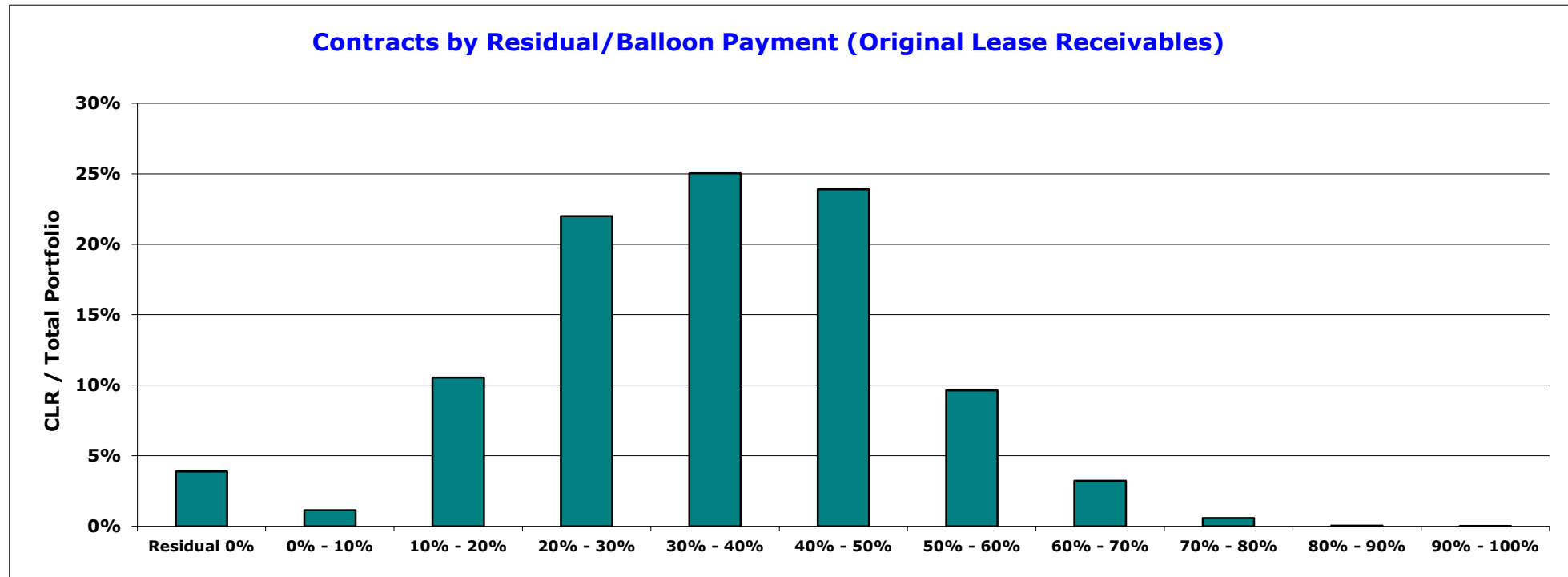
**FP Turbo Series 2014-1 Trust
as at 31 August 2015**

Contracts by Remaining Term					
Remaining Term Band Yrs	Current Lease Receivable (CLR) (\$)	CLR / Total Portfolio (%)	Contracts No.	Contracts No. / Total Portfolio (%)	
0 - 1	46,664,184	28.94%	2,297	43.70%	
1 - 2	54,830,574	34.01%	1,934	36.80%	
2 - 3	32,994,241	20.46%	743	14.14%	
3 - 4	10,873,543	6.74%	170	3.23%	
4 - 5	3,509,326	2.18%	30	0.57%	
5 - 6	857,986	0.53%	7	0.13%	
6 - 7	54,941	0.03%	1	0.02%	
7 - 8	945,356	0.59%	5	0.10%	
8 - 9	10,508,463	6.52%	69	1.31%	
9 - 10	-	0.00%	-	0.00%	
10+	-	0.00%	-	0.00%	
Grand Total	161,238,615	100.00%	5,256	100.00%	



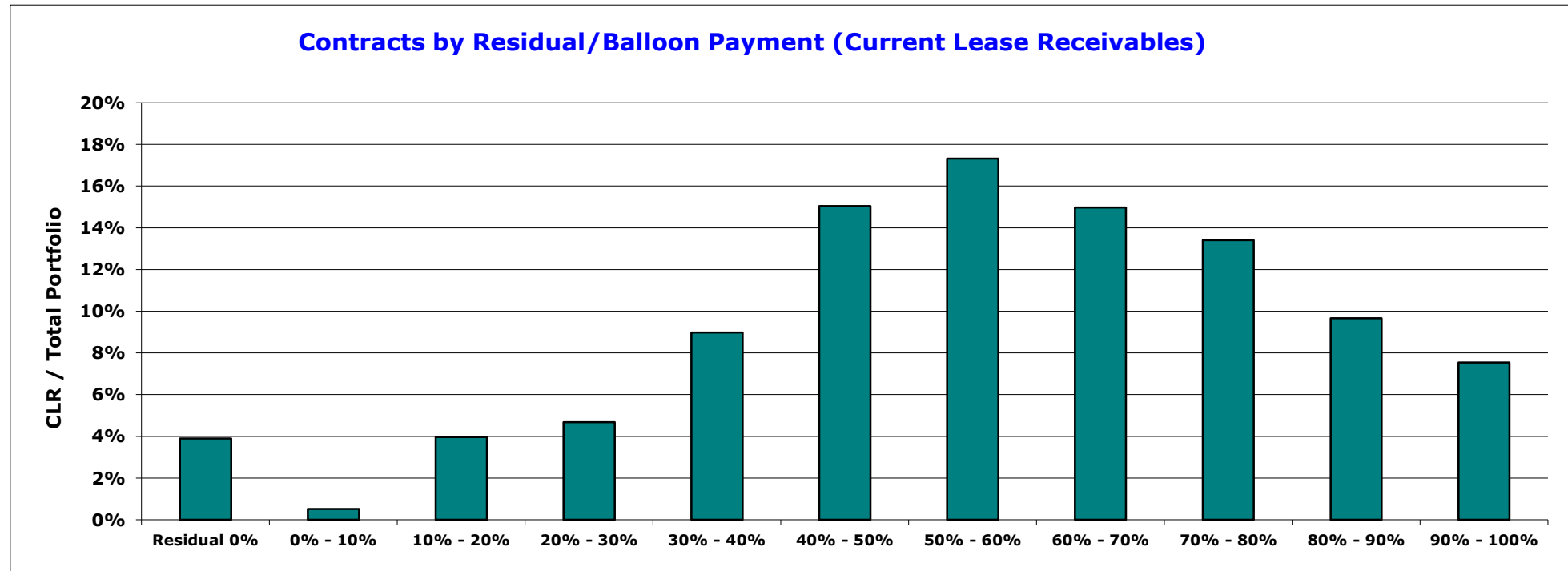
**FP Turbo Series 2014-1 Trust
as at 31 August 2015**

Contracts by Residual/Balloon Payment (Original Lease Receivables)				
Residual Band (original)	Current Lease Receivable (CLR) (\$)	CLR / Total Portfolio (%)	Contracts No.	Contracts No. / Total Portfolio (%)
Residual 0%	6,274,814	3.89%	47	0.89%
0% - 10%	1,839,327	1.14%	43	0.82%
10% - 20%	16,994,654	10.54%	377	7.17%
20% - 30%	35,456,994	21.99%	952	18.11%
30% - 40%	40,359,614	25.03%	1,401	26.66%
40% - 50%	38,527,841	23.89%	1,548	29.45%
50% - 60%	15,549,219	9.64%	672	12.79%
60% - 70%	5,196,270	3.22%	183	3.48%
70% - 80%	933,151	0.58%	29	0.55%
80% - 90%	76,175	0.05%	3	0.06%
90% - 100%	30,556	0.02%	1	0.02%
Grand Total	161,238,615	100.00%	5,256	100.00%



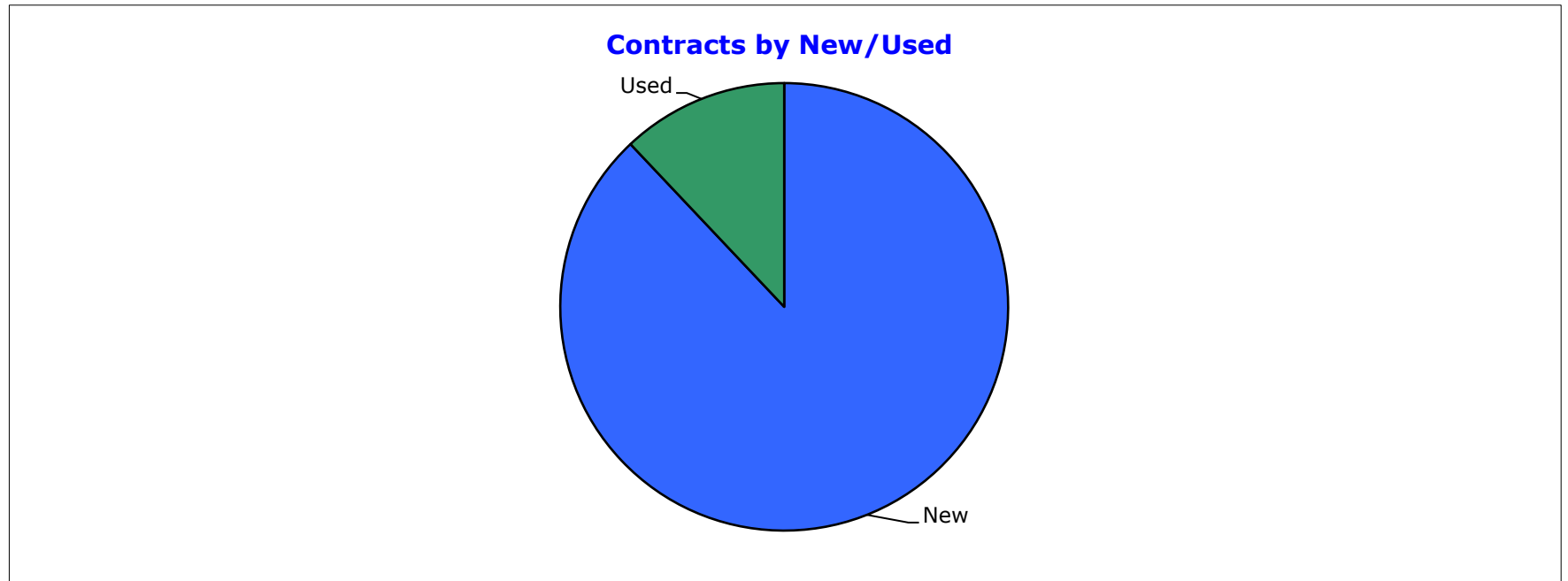
**FP Turbo Series 2014-1 Trust
as at 31 August 2015**

Contracts by Residual/Balloon Payment (Current Lease Receivables)				
Residual Band (current)	Current Lease Receivable (CLR) (\$)	CLR / Total Portfolio (%)	Contracts No.	Contracts No. / Total Portfolio (%)
Residual 0%	6,274,814	3.89%	47	0.89%
0% - 10%	843,480	0.52%	7	0.13%
10% - 20%	6,403,567	3.97%	81	1.54%
20% - 30%	7,542,003	4.68%	140	2.66%
30% - 40%	14,488,314	8.99%	274	5.21%
40% - 50%	24,257,595	15.04%	605	11.51%
50% - 60%	27,928,330	17.32%	836	15.91%
60% - 70%	24,134,840	14.97%	937	17.83%
70% - 80%	21,613,866	13.40%	919	17.48%
80% - 90%	15,583,532	9.66%	761	14.48%
90% - 100%	12,168,274	7.55%	649	12.35%
Grand Total	161,238,615	100.00%	5,256	100.00%



FP Turbo Series 2014-1 Trust
as at 31 August 2015

Contracts by New/Used				
New/Used	Current Lease Receivable (CLR) (\$)	CLR / Total Portfolio (%)	Contracts No.	Contracts No. / Total Portfolio (%)
New	141,820,821	87.96%	4,785	91.04%
Used	19,417,793	12.04%	471	8.96%
Grand Total	161,238,615	100.00%	5,256	100.00%



**FP Turbo Series 2014-1 Trust
as at 31 August 2015**

Contracts by Yield					
Yield Band	Current Lease Receivable (CLR) (\$)	CLR / Total Portfolio (%)	Contracts No.	Contracts No. / Total Portfolio (%)	
0% - 5%	1,700,540	1.05%	87	1.66%	
5% - 6%	2,463,888	1.53%	121	2.30%	
6% - 7%	5,463,067	3.39%	146	2.78%	
7% - 8%	22,335,416	13.85%	379	7.21%	
8% - 9%	19,481,628	12.08%	543	10.33%	
9% - 10%	23,072,755	14.31%	609	11.59%	
10% - 11%	15,589,312	9.67%	511	9.72%	
11% - 12%	15,078,045	9.35%	499	9.49%	
12% - 13%	17,101,711	10.61%	568	10.81%	
13%+	38,952,252	24.16%	1,793	34.11%	
Grand Total	161,238,615	100.00%	5,256	100.00%	

